



# Seychelles Artisanal Fishery : Focus on *Lutjanus sebae*



FAO SWIOFC/IOTC Weight of Evidence for Fisheries Management Methodology  
Workshop

24<sup>th</sup> – 28<sup>th</sup> March 2014

Mombasa, Kenya

# Outline

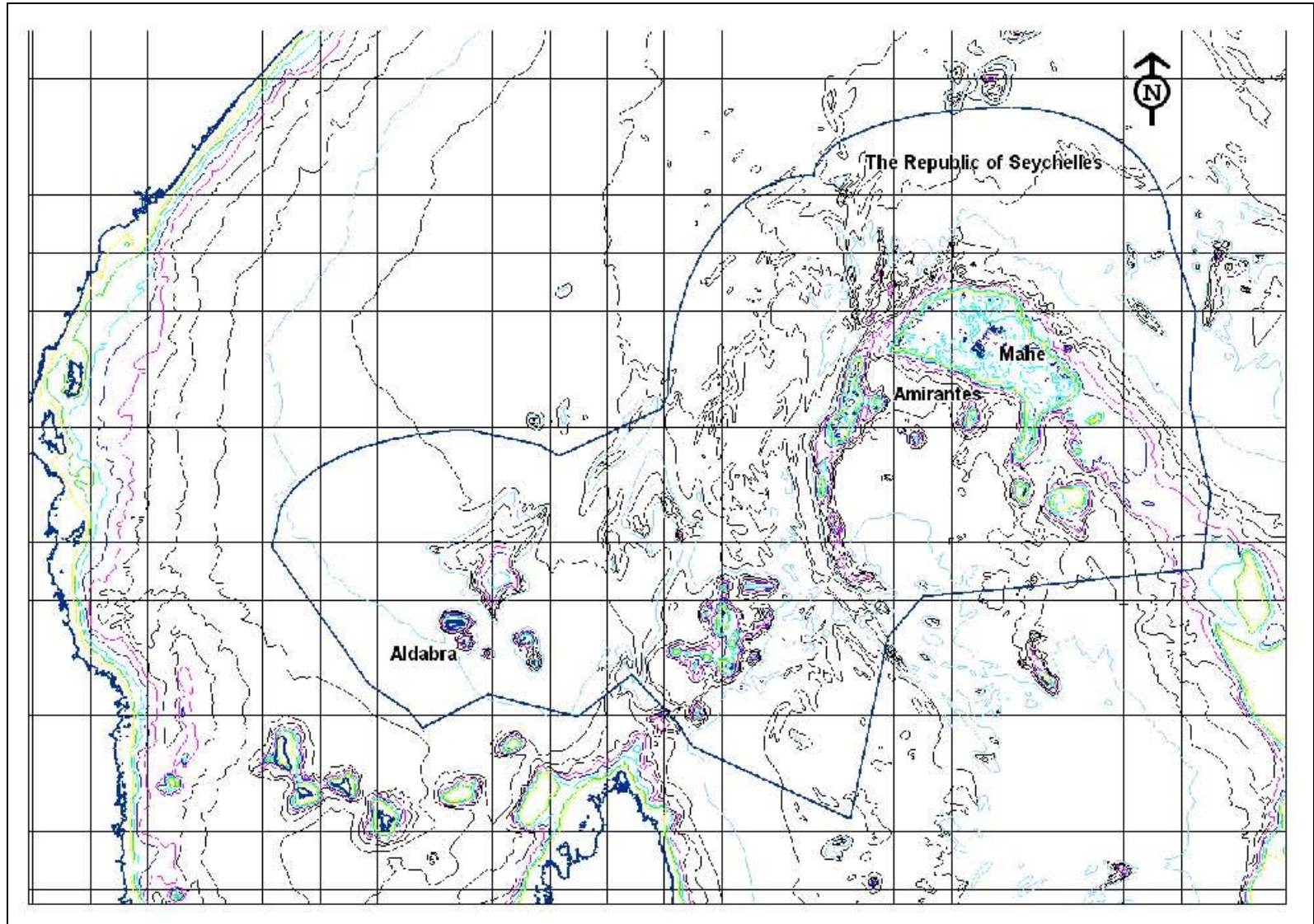
- Overview of artisanal fishery
- Indicator species
- *Lutjanus sebae*
  - The fishery
- Information available
- Management advice

# Artisanal fishery

- Targets mostly demersal and semi-pelagic species
- Different boat types
  - Small boat (pirogues and Mini Mahe)
  - Whalers and schooners



# Artisanal fishery



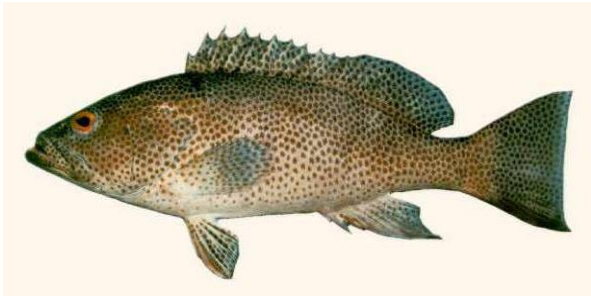
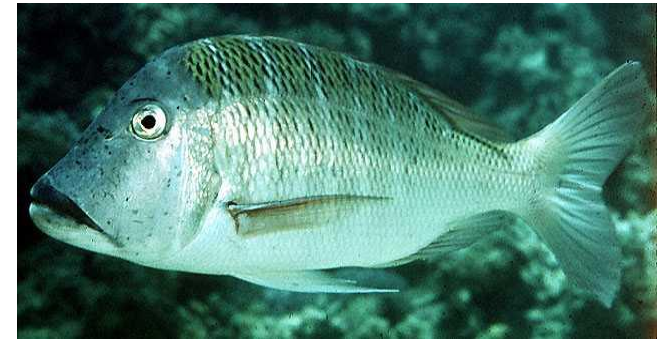
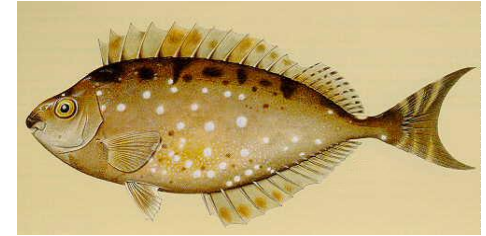
# Artisanal fishery

- Multi gear fishery
- Main gear types
  - Bamboo/metal traps
  - Handline
- Other gear types
  - Pelagic longline (Drag: targeting sharks)
  - Beach seine



# Artisanal fishery

- Main targeted species
  - Lethrinids, lutjanids
  - Carangidae
  - Epinephelus spp.
  - Siganids
- Catch 2003-2008 = 3800-4800t
- Catch 2012 = 2500t



# Indicator species

- *Lutjanus sebae*  
(Bourzwa)



- *Aprion virescens*  
(Zob gri)



- *Epinephelus chlorostigma*  
(Vyey makonde)



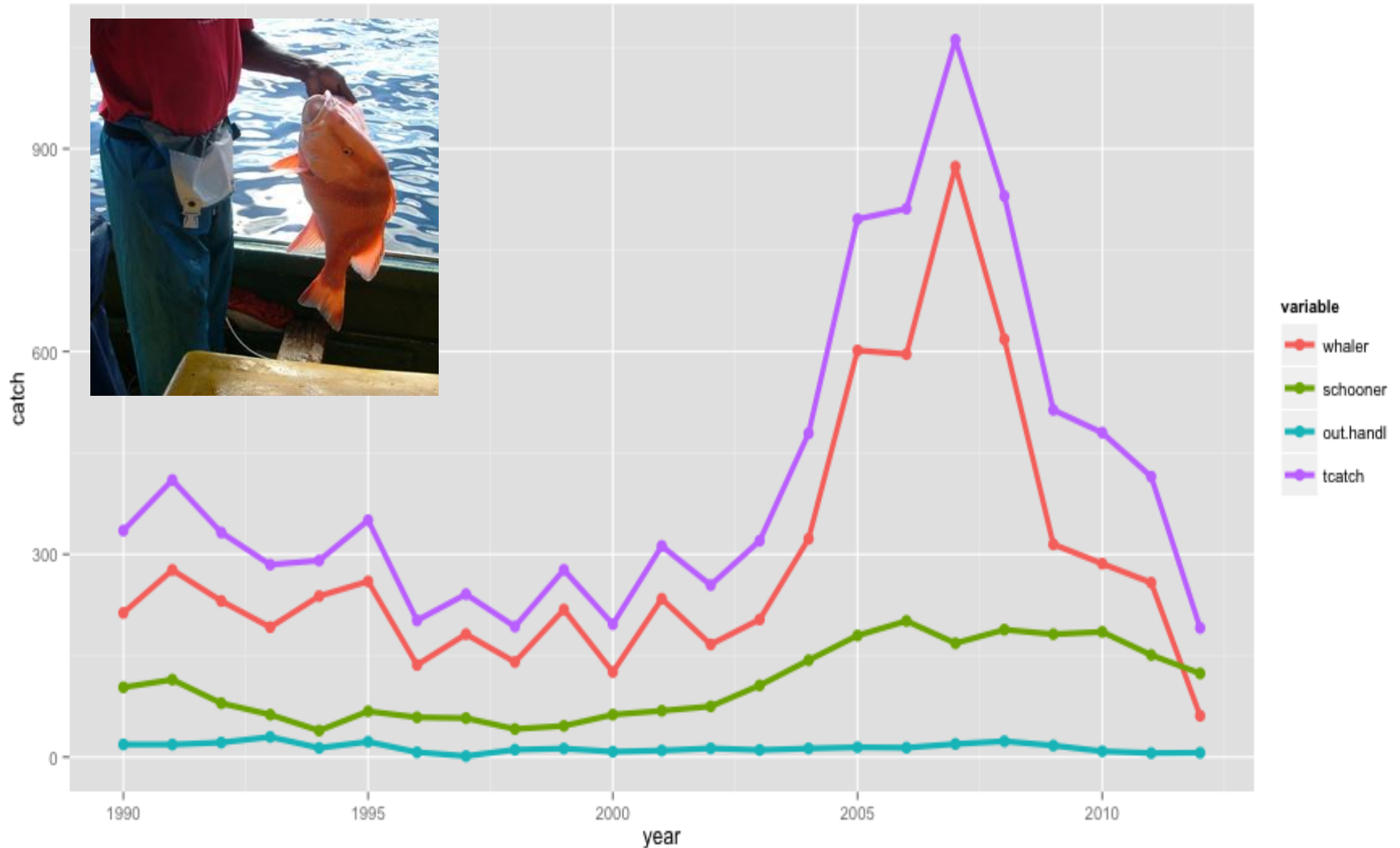
# *Lutjanus sebae*

- 10-20% of total catch
- Long life span ( $t_{\max} = 28$  years) , slow growth rate ( $k=0.14$ ) , late age at sexual maturity ( $t_m=9$  years)
- Targeted by small boat, whaler and schooners
- Mostly caught by handline gear
- Juveniles also caught using traps



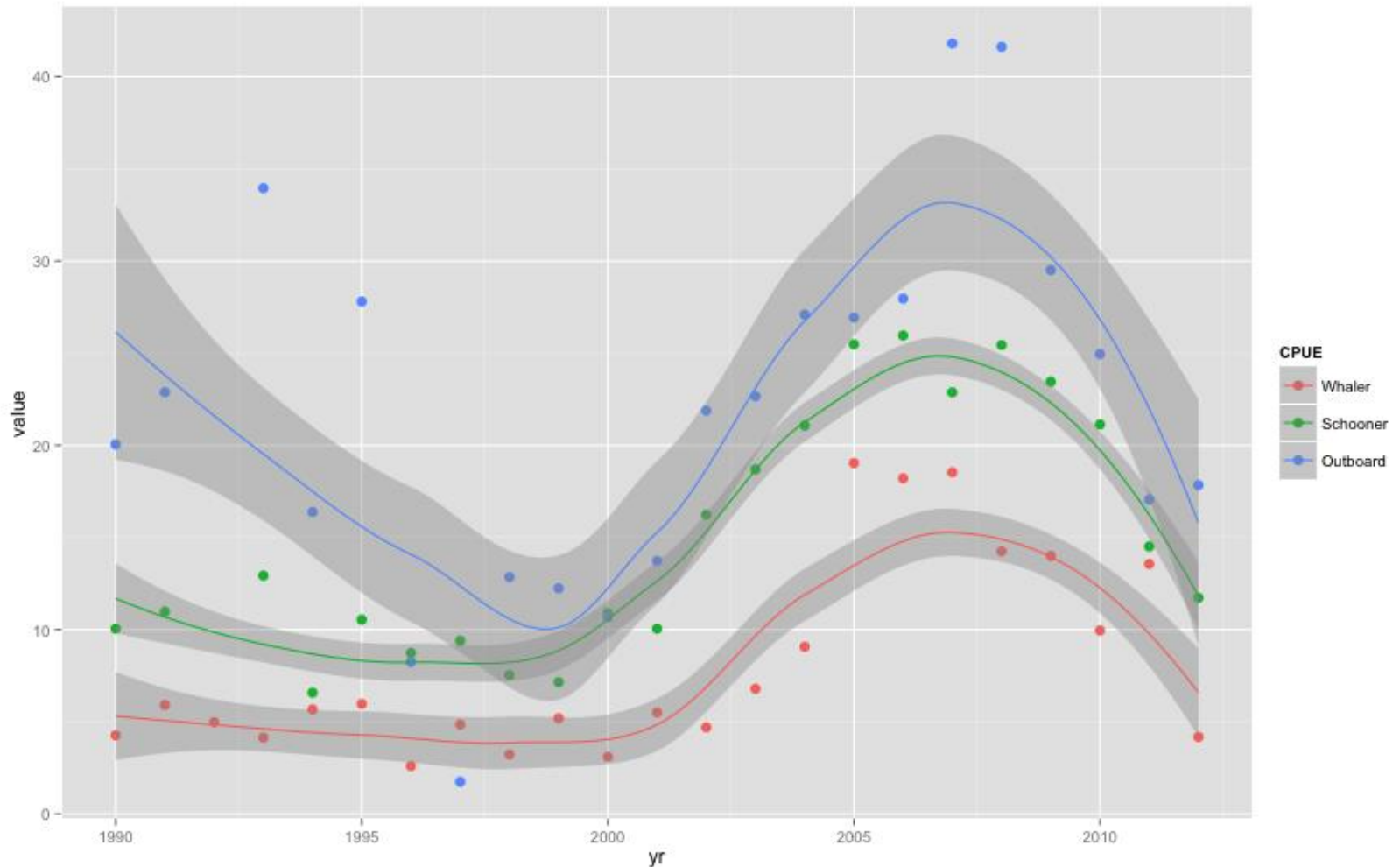


# The fishery:- *L. sebae*



- Driven by whaler fleet
- Large increase in mid 2000's

# *L. sebae*: Catch per Unit Effort (CPUE)



- Same pattern as catch
- Increase in relative abundance in 2000's / increase in targeting

# Information available

- Catch and effort data from CAS (1990 – 2012)
- Length frequency (1989-1997, 2000, 2003-2012)
- Otolith age readings (2000)
- Stock assessment results
  - Lablache and Carrara, 1988 (MSY 380t)
  - Grandcourt et al. 2008 (MSY 208t)
- Fishing mortality estimates
  - Derived from length converted catch curves

# Management advice

- Determine the stock status
- Best way to reduce effort and by how much??
- Temporal closures??
- Closed areas
- Export controls

Thank you!!

