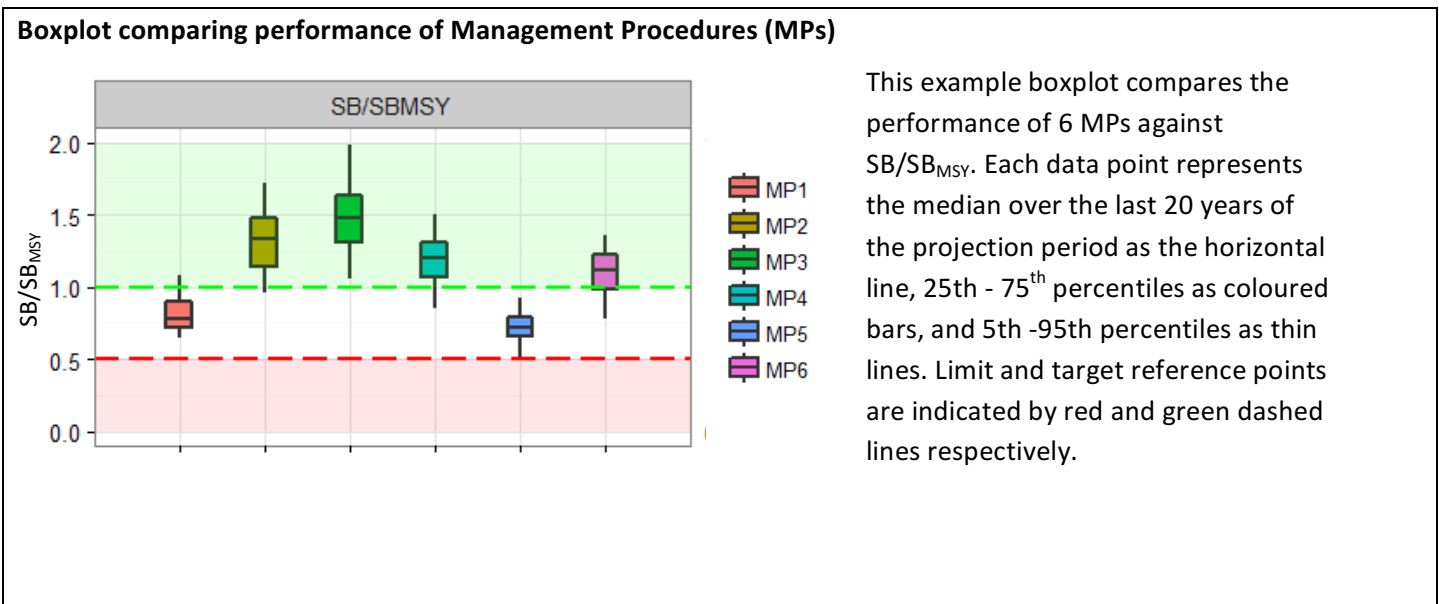
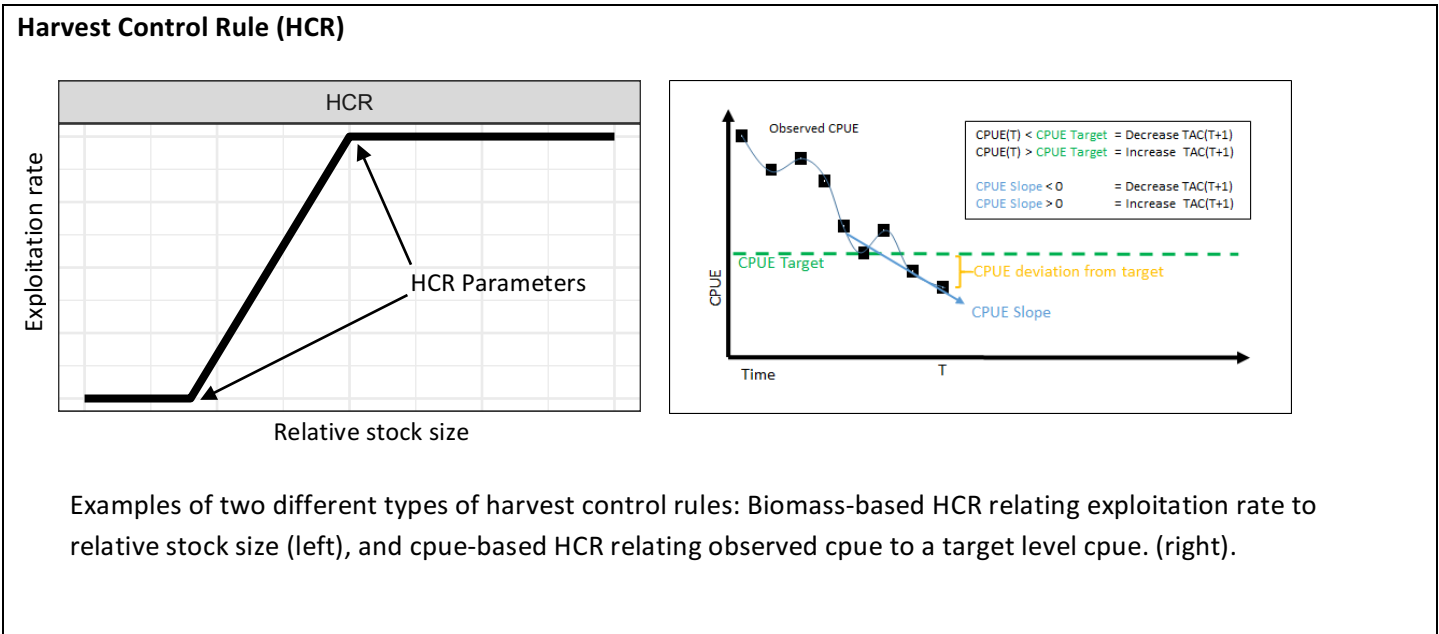
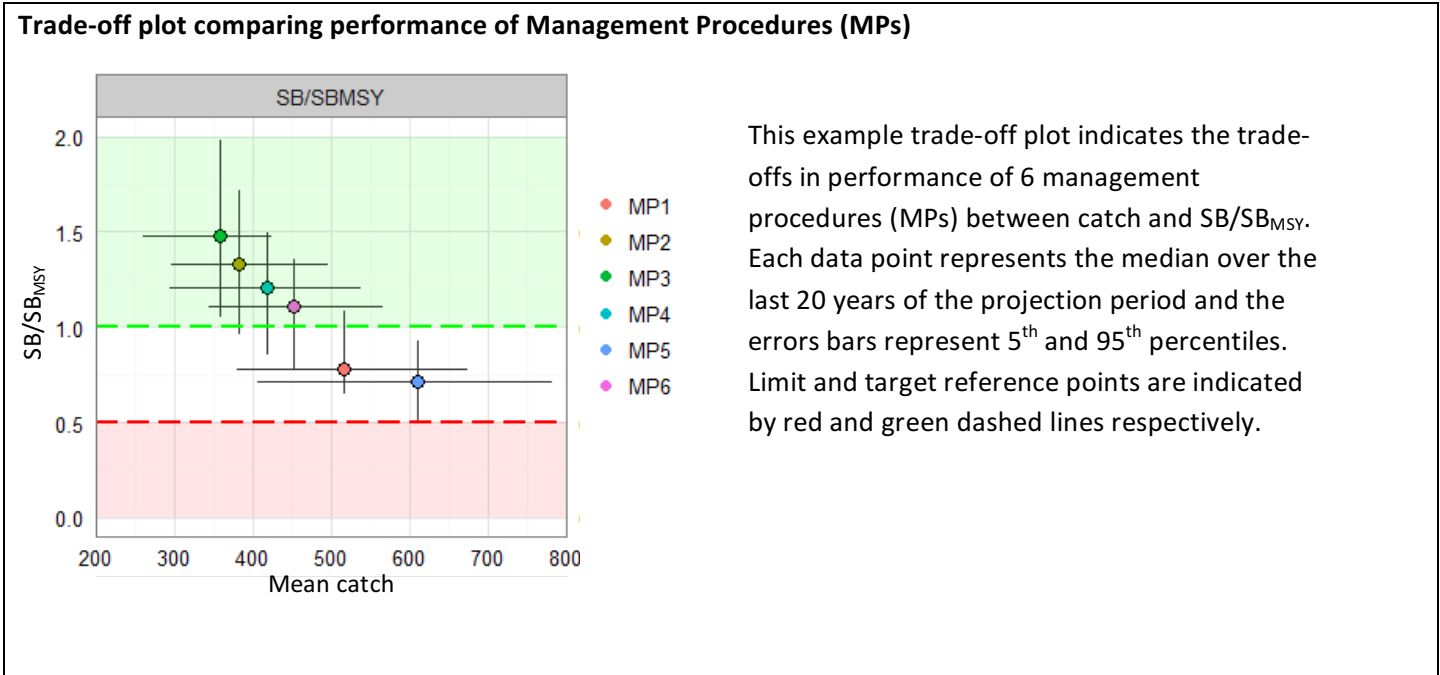


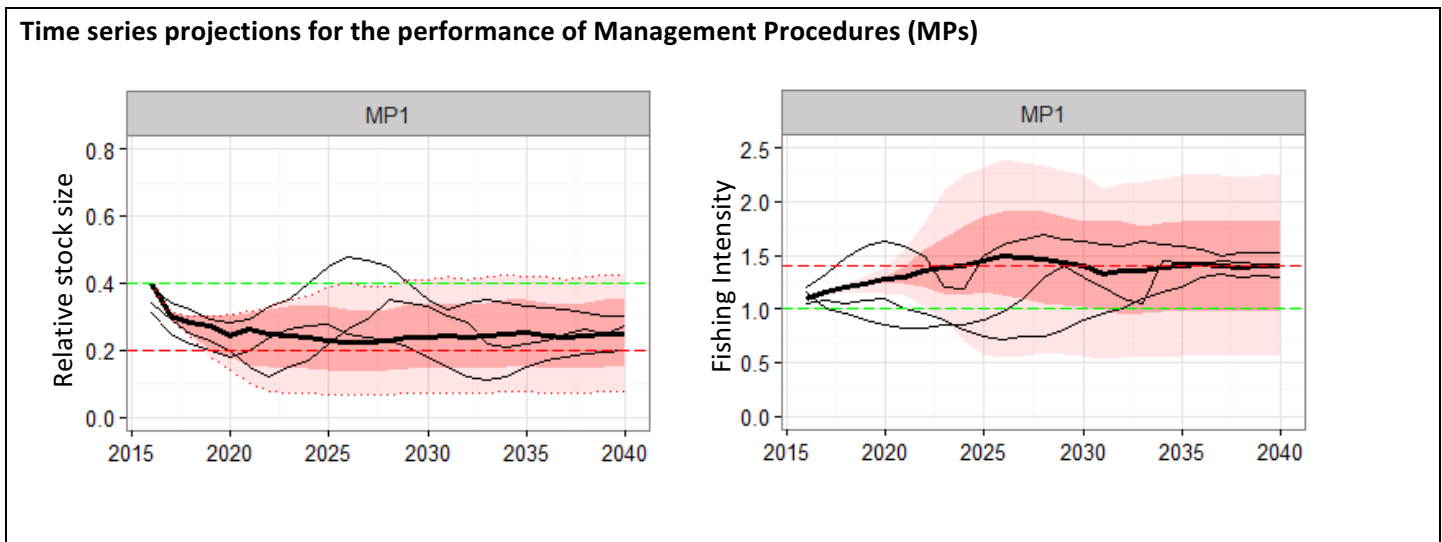
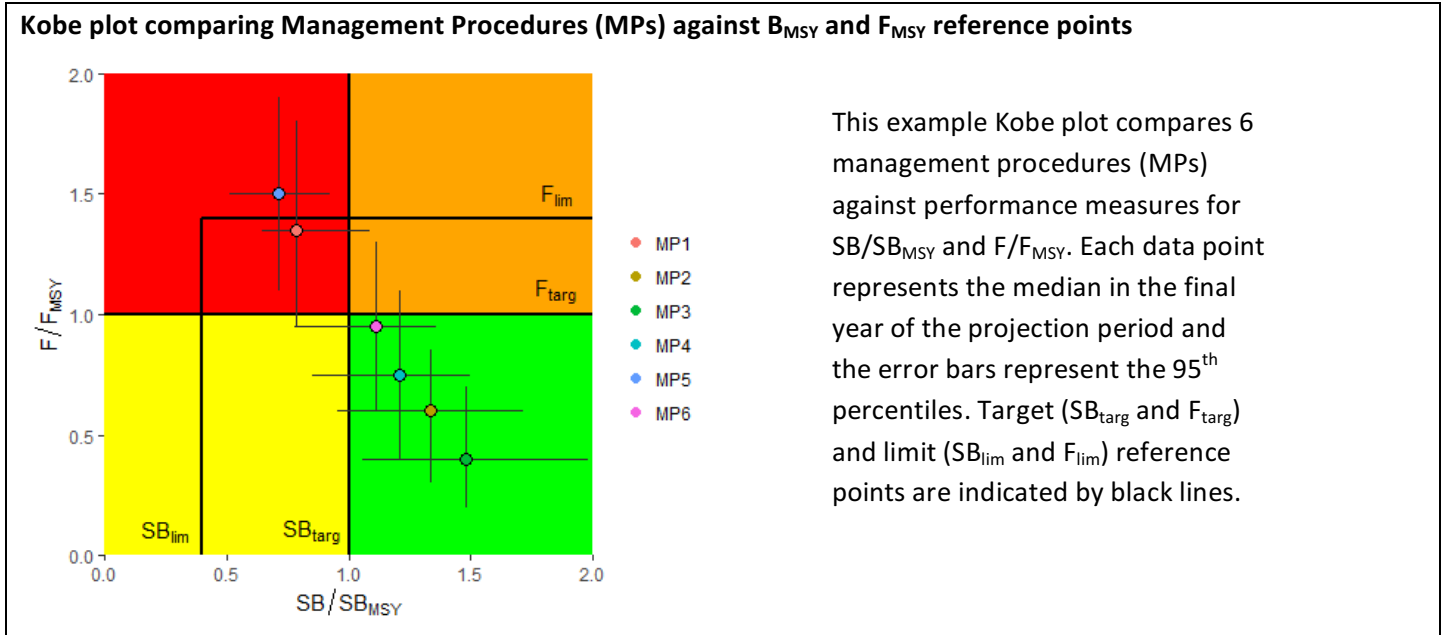
**PRESENTATION OF MANAGEMENT STRATEGY EVALUATION RESULTS**





**Summary table of performance of Management Procedures (MPs).** Performance of 6 MPs against 5 performance measures averaged over the last 20 years of the projection period. Shading indicates the relative performance for each MP (dark = better, light = worse).

Management Procedure	Performance Measure				
	$SB/SB_{MSY}$	Probability(Green)	Probability( $SB > limit$ )	Mean Catch	Catch variability
MP1	0.78	0.05	0.84	516	0.16
MP2	1.33	0.94	0.96	383	0.28
MP3	1.48	0.96	1	358	0.3
MP4	1.21	0.84	0.93	419	0.22
MP5	0.72	0	0.71	611	0.1
MP6	1.11	0.61	0.91	452	0.21



These example time series plots indicate the performance of 1 MP against the stock size (left) and fishing intensity (right) performance measures projected over the years 2016-2040. The median is represented by the bold black lines, a dark ribbon shades the 25<sup>th</sup> - 75<sup>th</sup> percentile region and a light ribbon shades the 10<sup>th</sup> - 90<sup>th</sup> percentile region. Three additional thin black lines show individual realizations.