



Food and Agriculture  
Organization of the  
United Nations



iotc ctoi

Indian Ocean Tuna Commission  
Commission des Thons de l'Océan Indien



COMMON OCEANS

CAPE TOWN, 25-27 OCTOBER 2017

---

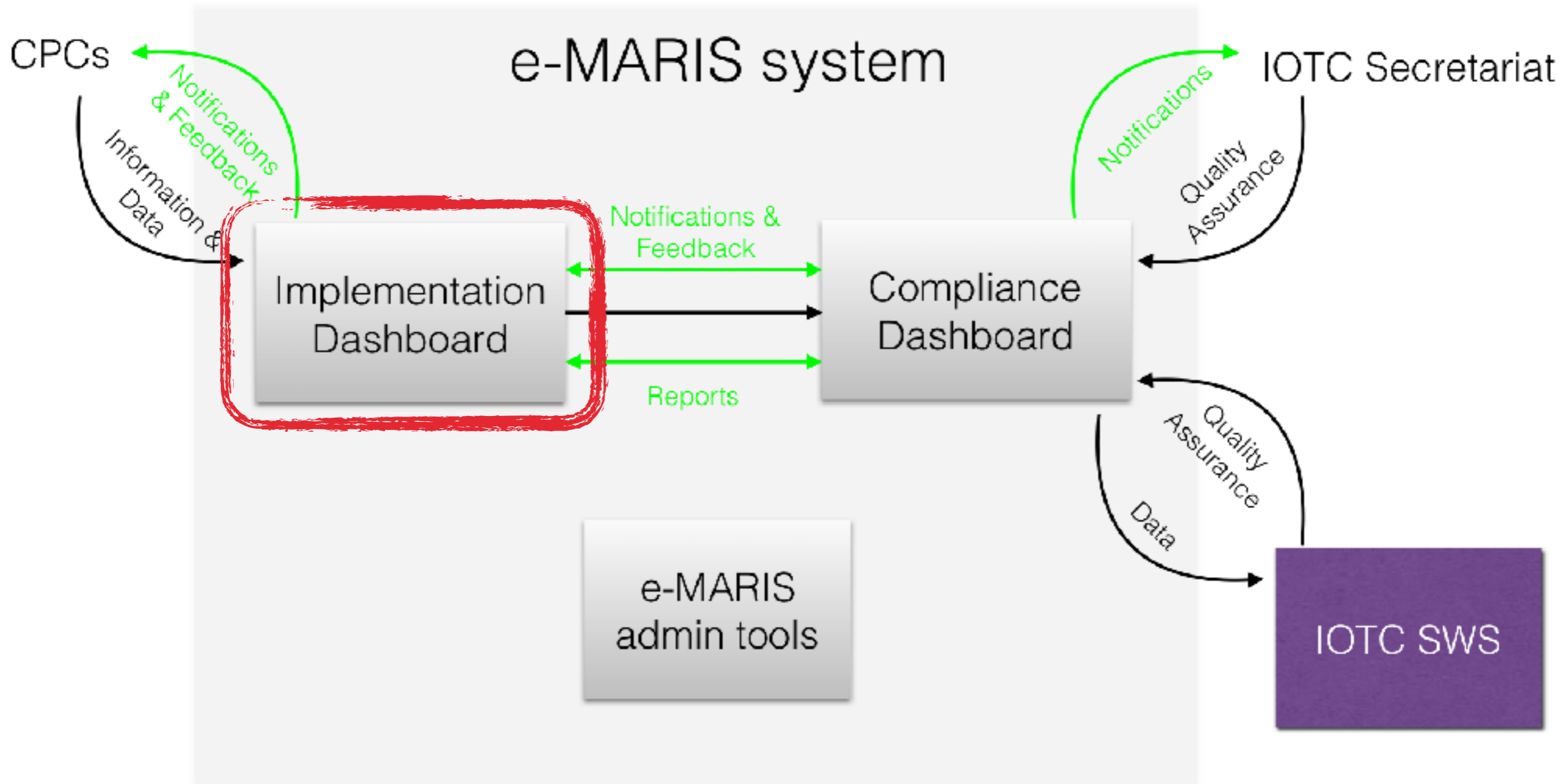
# E-MARIS VALIDATION WORKSHOP

E-MARIS VALIDATION WORKSHOP

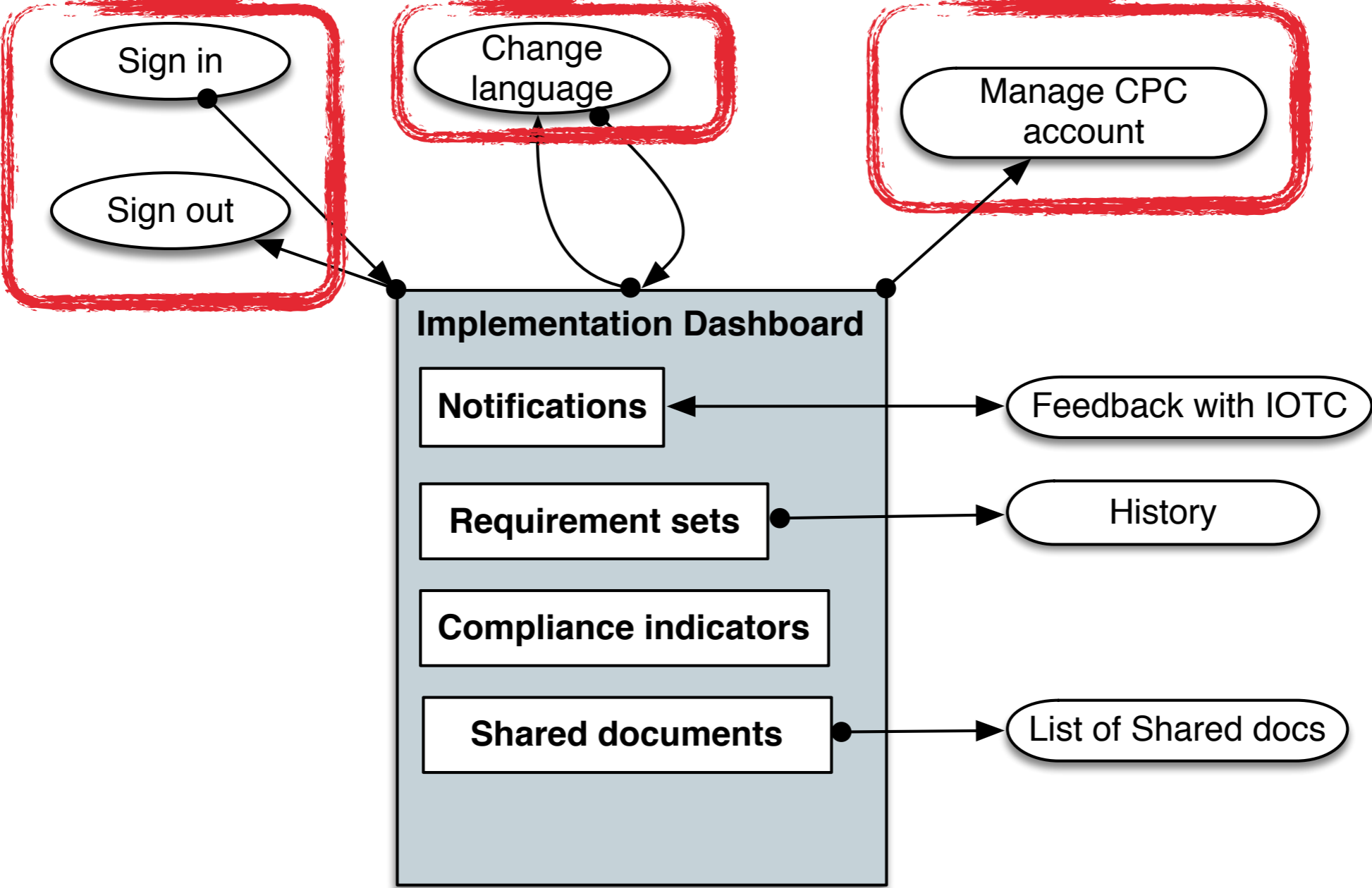
---

**IMPLEMENTATION DASHBOARD:  
ADMINISTRATIVE & MISC TOOLS**

# GLOBAL ORGANISATION



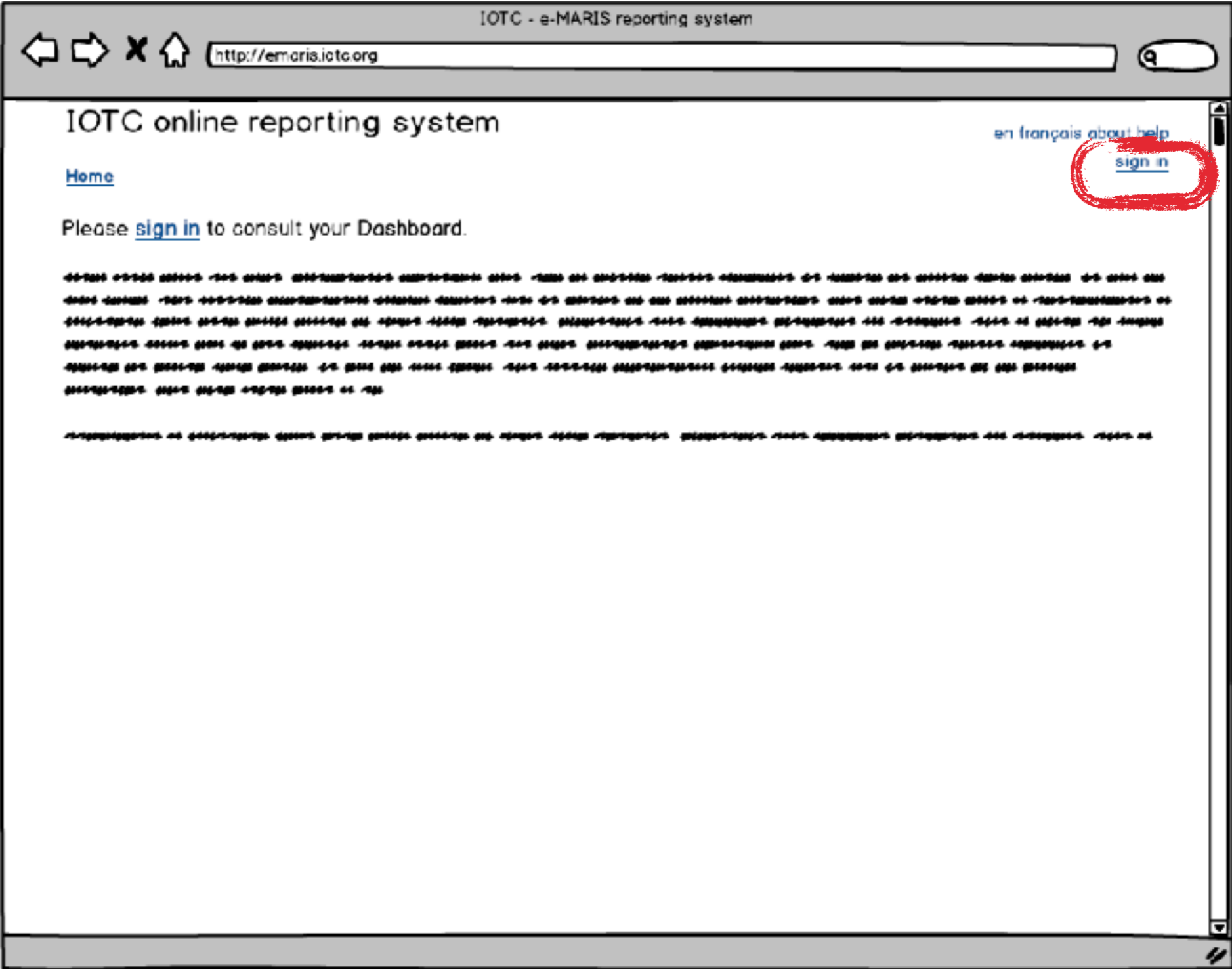
# GLOBAL ORGANISATION



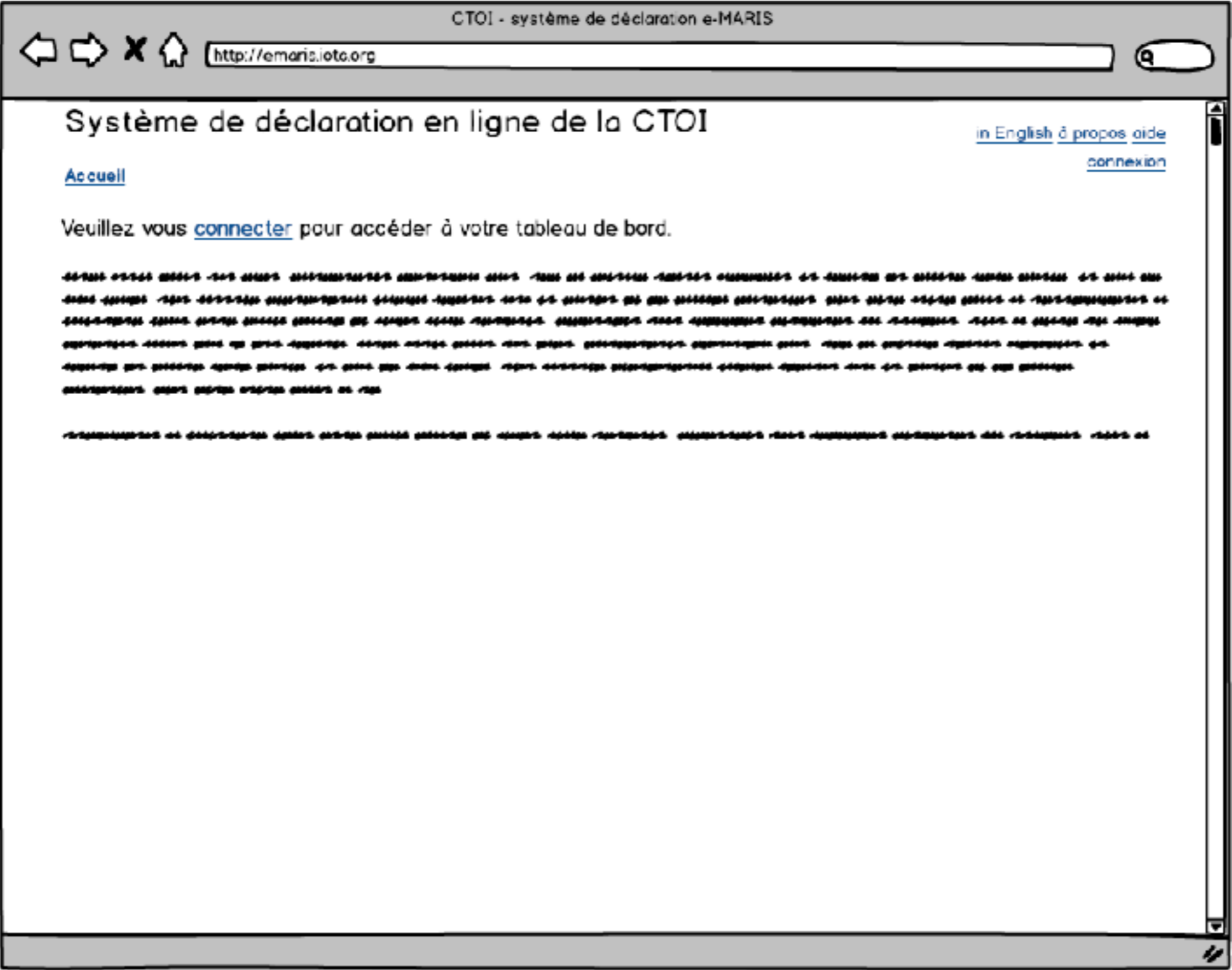
# SWITCHING LANGUAGES

- ▶ the Implementation Dashboard (ID) is available in English and French
- ▶ a simple button allows to switch between the two languages
- ▶ some information is available in both languages
- ▶ some CPC-submitted information is available in one language only

# SWITCHING LANGUAGES



# SWITCHING LANGUAGES

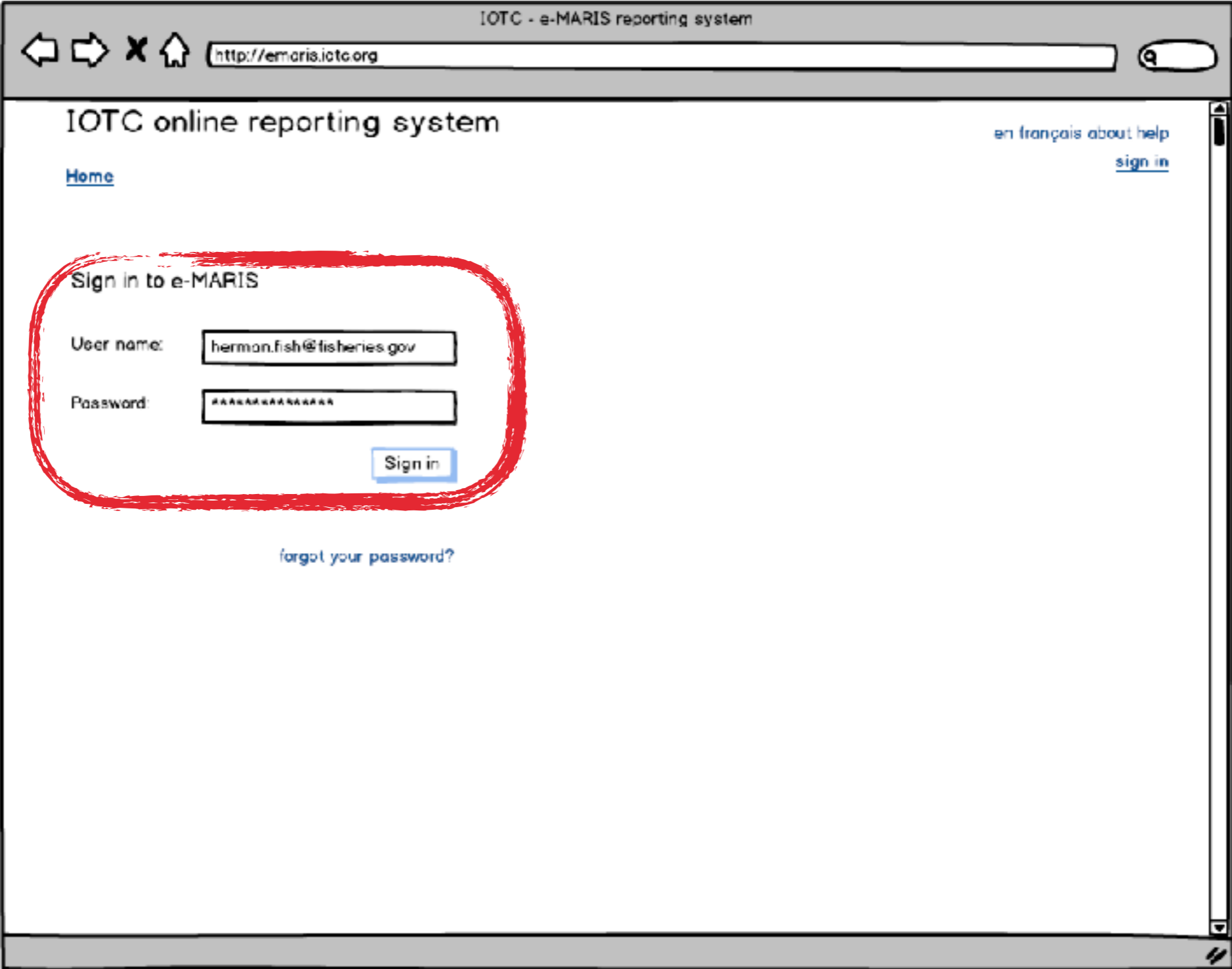


# SIGNING IN & OUT

- ▶ Most e-MARIS features require the user to be logged-in
- ▶ User accounts can have various entitlements
- ▶ To sign in, a user enter her username and password
- ▶ A feature allows users to generate a new password
- ▶ Signing out returns the user to the e-MARIS home page



# SIGNING IN & OUT



## SIGNING IN & OUT

IOTC - e-MARIS reporting system

http://emar.is.iotc.org

### IOTC online reporting system - Seychelles

[en français](#), [about help](#), [HermaFish](#), [sign out](#)

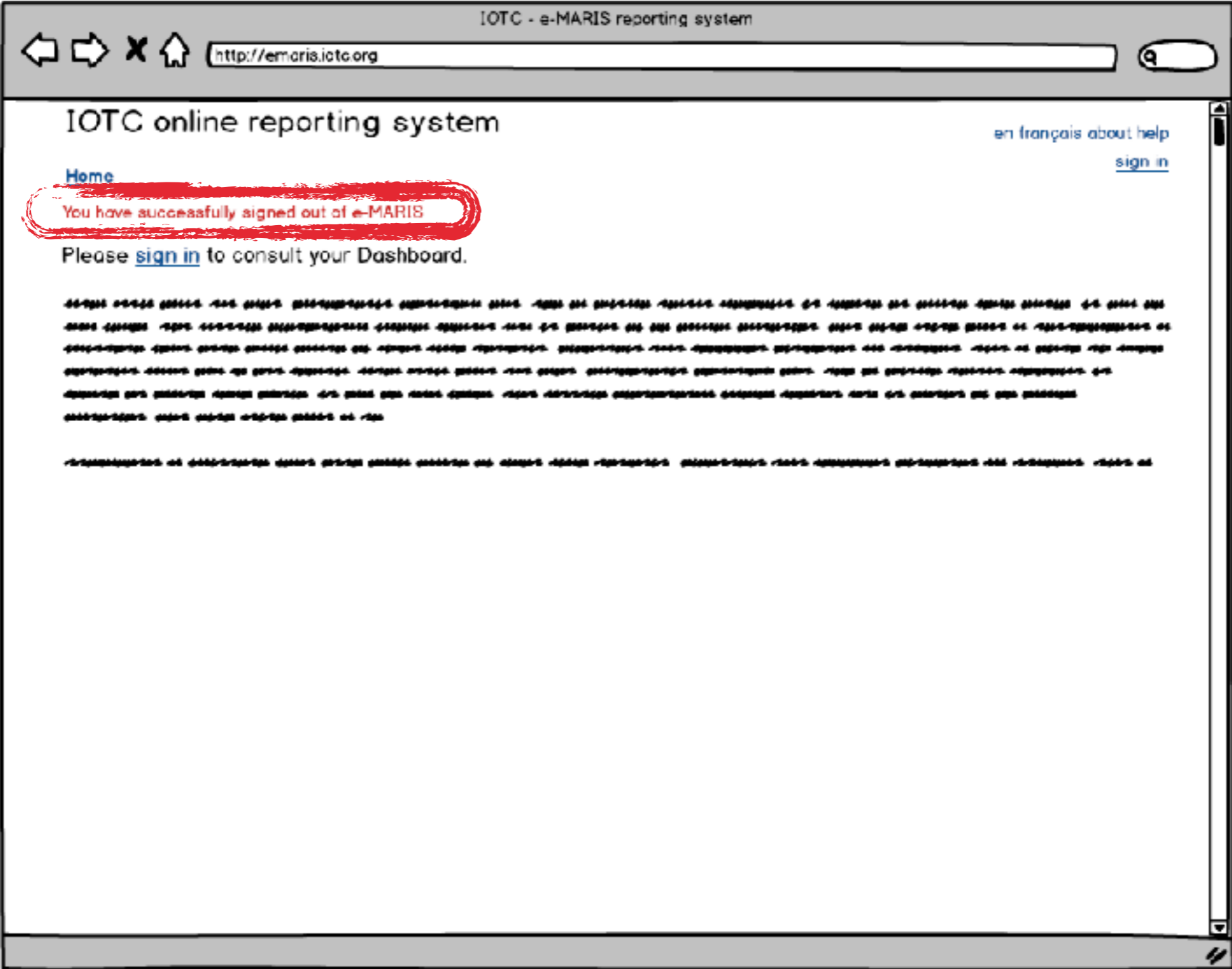
[Home](#)

Notifications

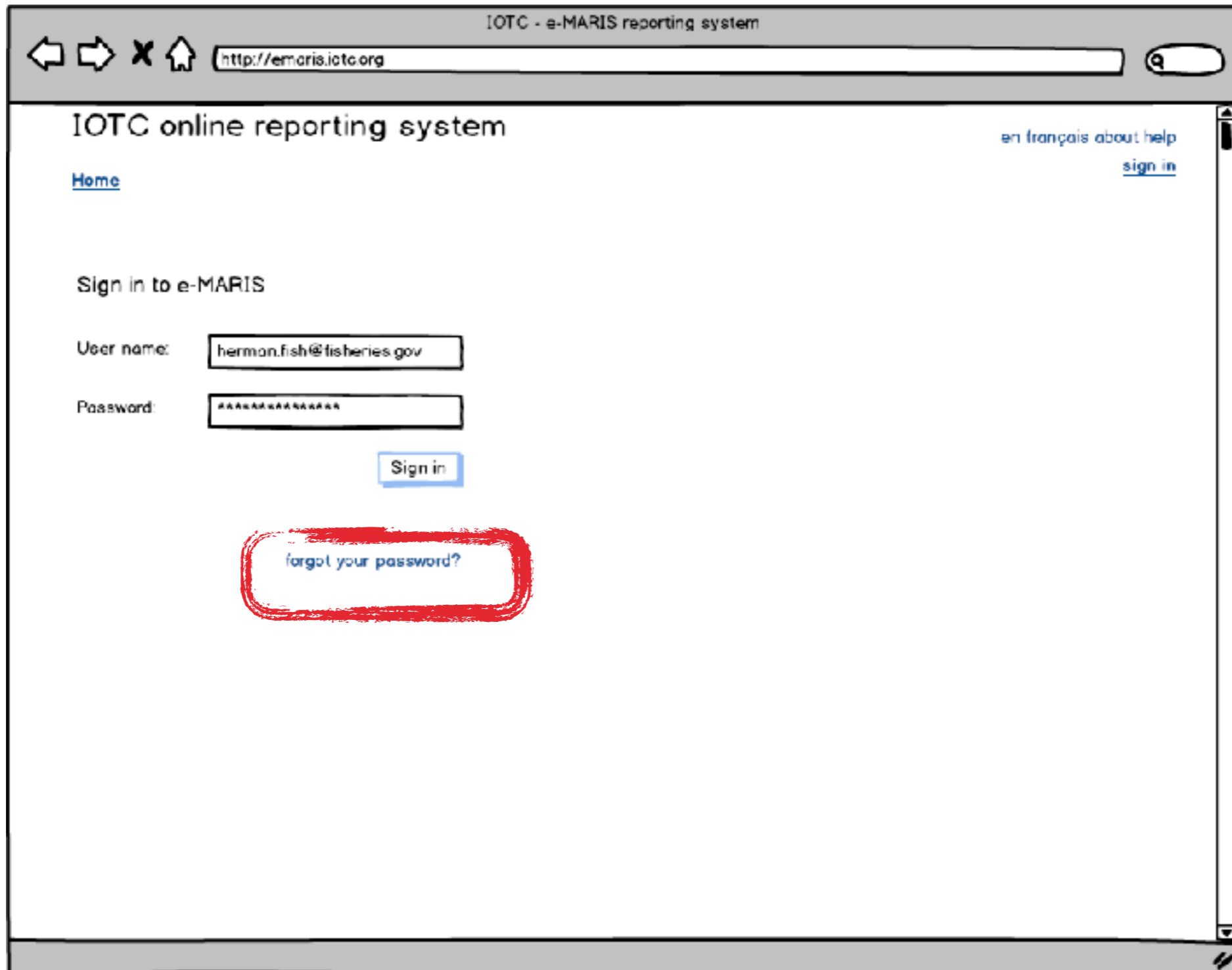
2016-09-15	30 days left for submission of your <a href="#">2015 Implementation Report</a>
2016-09-01	<b>Late submission:</b> <a href="#">final scientific data for the previous year by 30 June of the current year, for all fleets other than longline</a>
2016-08-01	IOTC feedback regarding: <a href="#">Part A, Resolution 15/11</a>
2016-05-01	30 days left for submission of <a href="#">final scientific data for the previous year by 30 June of the current year, for all fleets other than longline</a>
2016-04-06	You submitted: <a href="#">Part A, Resolution 15/11</a> <a href="#">contact the IOTC Secretariat</a>

[more..](#)

## SIGNING IN & OUT



# RESETTING YOUR PASSWORD



# RESETTING YOUR PASSWORD

IOTC - e-MARIS reporting system

http://emar.is.iotc.org

IOTC online reporting system

[Home](#)

[en français](#) [about](#) [help](#) [sign in](#)

**Sign in to e-MARIS**

If you forgot your password, please enter your user name below and click the "Reset password" button. An email will be sent to your email account on file with a link to create a new password.

User name:

# RESETTING YOUR PASSWORD

IOTC - e-MARIS reporting system

http://emaris.iotc.org

IOTC online reporting system

[en français](#) [about](#) [help](#)

[Home](#) [sign in](#)

**Reset password**

Hello, hermon.fish@fisheries.gov, you have chosen to reset your password. Please enter your new password twice below then click the "Save new password" button.

New password:

New password:

## RESETTING YOUR PASSWORD

IOTC - e-MARIS reporting system

http://emaris.iotc.org

IOTC online reporting system

[en français](#) [about](#) [help](#)

[Home](#) [sign in](#)

**Reset password**

herman.fish@fisheries.gov, your password has been changed successfully  
You can now sign in using your new password.

User name:

Password:

[forgot your password?](#)

## MANAGING A CPC USER ACCOUNT

- ▶ a CPC user, once logged-in, can change:
  - ▶ her password
  - ▶ her contact details: name, email, address, institution, etc.



## MANAGING A CPC USER ACCOUNT

The screenshot shows a web browser window titled "IOTC - e-MARIS reporting system" with the URL "http://emar.is.iotc.org". The page content includes a header "IOTC online reporting system - Seychelles" and a user profile for "Herman Fish" with a "sign out" link. A "Notifications" section lists several messages with dates and details regarding report submissions and deadlines.

IOTC online reporting system - Seychelles

[en français](#) [about](#) [help](#)  
Herman Fish, [sign out](#)

[Home](#)

Notifications

2016-09-15	30 days left for submission of your 2015 Implementation Report
2016-09-01	<b>Late submission:</b> <a href="#">final scientific data for the previous year by 30 June of the current year, for all fleets other than longline</a>
2016-08-01	IOTC feedback regarding: <a href="#">Part A, Resolution 15/11</a>
2016-05-01	30 days left for submission of <a href="#">final scientific data for the previous year by 30 June of the current year, for all fleets other than longline</a>
2016-04-06	You submitted: <a href="#">Part A, Resolution 15/11</a> <a href="#">contact the IOTC Secretariat</a>

[more..](#)

# MANAGING A CPC USER ACCOUNT

The screenshot shows a web browser window with the title "IOTC - e-MARIS reporting system". The address bar contains "http://emaris.iotc.org". The page content is titled "IOTC online reporting system - Seychelles" and includes links for "en français", "about", and "help". The user is identified as "Herman Fish" with a "sign out" link. The page is divided into two main sections: "Change my password" and "Change my personal details".

**Change my password**

Current password:

New password:

New password:

**Change my personal details**

Name:

Address:

Email:

Phone:

Institution:

Position: