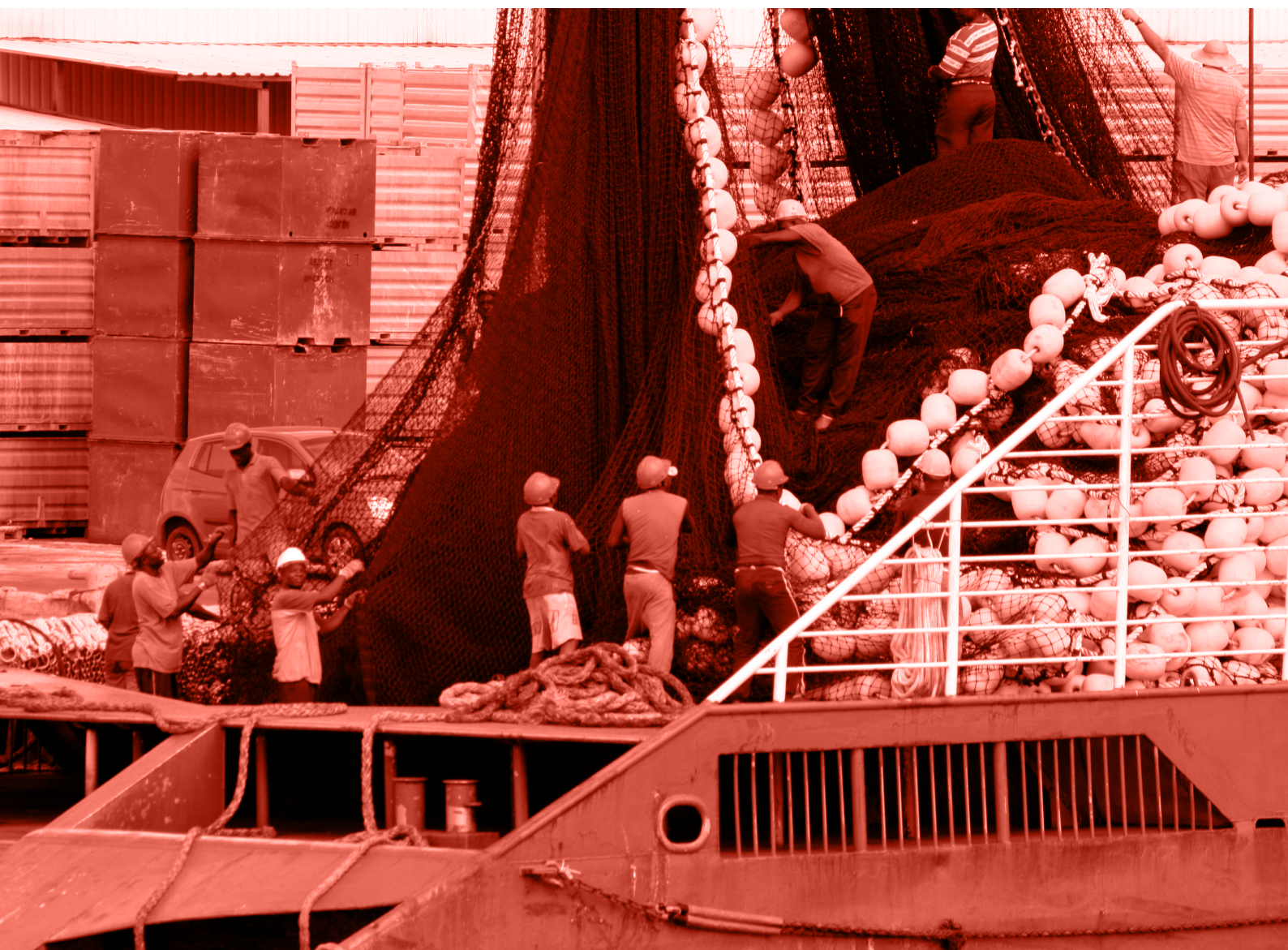


**RESOLUTION 12/09**
ON THE CONSERVATION OF THRESHER SHARKS (FAMILY ALOPIIDAE) CAUGHT IN ASSOCIATION WITH FISHERIES IN THE IOTC AREA OF COMPETENCE

APPLICABLE TO

**REPORTING REQUIREMENTS**

This resolution, which supersedes Resolution 10/12 of the same title, gives full consideration to the endangered and vulnerable status of sharks, from the family of thresher sharks (*Alopiidae*). It provides a limited number of technical and reporting requirements, most of which are directed to the flag State.

There is data reporting requirement for CPCs whose vessels or fishermen catch thresher sharks. The requirement covers catch statistics, and the deadline for the reporting requirement is the deadline applicable to Resolution 15/02 on Mandatory Statistical Requirements for IOTC CPCs.

WHO

CPC FLAG STATE

WHAT

Report nominal catch, catch and effort and size frequency data of catches of thresher shark, in accordance with IOTC data reporting procedures

Report nominal catch, catch and effort and size frequency data of catches of thresher sharks from the coastal fleet

WHEN

DEADLINES

To submit yearly data by 30th June, annually

REPORTING REQUIREMENTS: FORMAT AND CONTENT

Paragraph 8 notes that the data shall be submitted according to IOTC data reporting procedures. This is presumed to be the data received by CPCs according to Paragraph 4 where they 'encourage' their fishers to record incidental catches and live releases of thresher shark. Detailed template reporting forms also covering shark catches have been developed by the Secretariat and Scientific Committee in Excel format. These forms cover data reporting requirements under resolution 15/02 on Mandatory Statistical Requirements, and accommodate the reporting needs under this resolution.

THRESHER SHARK DATA REPORTING BY FLAG STATE

REPORTING REQUIREMENT 1:

SUBMIT TO THE IOTC SECRETARIAT A REPORT ON THE INCIDENTAL CATCH OF THRESHER SHARK, NOMINAL CATCH, CATCH AND EFFORT AND SIZE FREQUENCY, AS REQUIRED BY IOTC DATA REPORTING PROCEDURES

IMPLEMENTATION

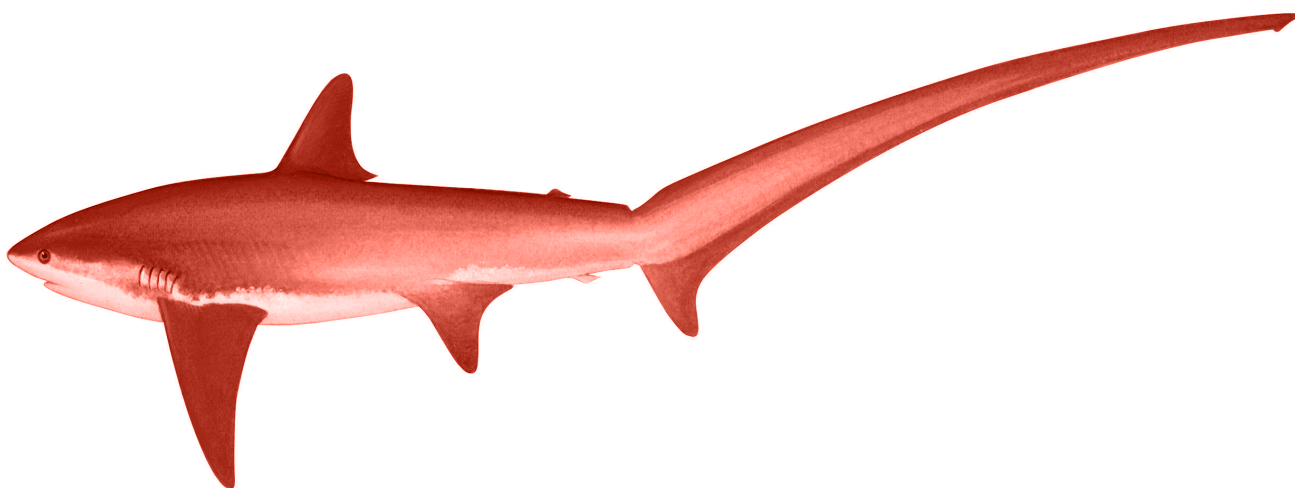
- How to report: For incidental catch of thresher shark data required to be submitted under this Resolution should be according to IOTC data reporting procedures. Specific data recording and submission guidelines have been developed by the Scientific Committee and for shark data the applicable template forms, ought to be followed meticulously. For sharks, forms 1RC, 3CE, 3AR and 4SF apply.
- Reporting format: Data must be submitted in specified file format. The template spread-sheet form can be accessed under <http://www.iotc.org/data/requested-statistics-and-submission-forms>
- Where to send the information: The data report should be mailed to iotc-secretariat@fao.org

REPORTING REQUIREMENT 2:

PROVIDE TO THE IOTC SECRETARIAT A REPORT OF CATCHES OF THRESHER SHARKS, NOMINAL CATCH, CATCH AND EFFORT AND SIZE FREQUENCY OF CATCHES OF SHARKS FROM THE COASTAL FLEET, IN ACCORDANCE WITH THE IOTC DATA REPORTING PROCEDURES

IMPLEMENTATION

- How to report: For thresher shark data required to be submitted under the resolution, the specific data recording and submission guidelines, as provided within the applicable template forms, ought to be followed meticulously. For sharks, forms 1RC, 3CE, 3AR and 4SF apply.
- Reporting format: Data must be submitted in specified file format. The template spread-sheet form can be accessed under <http://www.iotc.org/data/requested-statistics-and-submission-forms>
- Where to send the information: The data report should be mailed to iotc-secretariat@fao.org



Thresher Shark (*Alopias vulpinus*), © R.Swainston/anima.net.au



COOPERATION REQUIREMENTS

There are none in this resolution.

OBLIGATIONS OF THE INDUSTRY

Industry are 'encouraged' to report details on incidental catch of thresher sharks to their flag State authorities.

OBLIGATIONS OF THE SECRETARIAT

The IOTC Secretariat are to 'keep' the data on incidental catch of thresher sharks.

OBLIGATIONS OF THE COMMISSION & BODIES

There are none in this resolution.



Indian Ocean Tuna Commission
P.O. Box 1011, Seychelles
Tel: +248-4225494
www.iotc.org