



Food and Agriculture  
Organization of the  
United Nations



iotc ctoi



ENG

# DATA & INFORMATION

GUIDE TO IOTC DATA  
AND INFORMATION  
REPORTING requirements  
for Members and Cooperating  
Non-contracting Parties





eng

# DATA & INFORMATION

**GUIDE TO IOTC DATA AND INFORMATION  
REPORTING**

requirements for Members and Cooperating  
Non-contracting Parties

**Please reference this publication as:**

IOTC. 2018. Data and information guide Guide to IOTC data and information reporting requirements for members and cooperating non-contracting parties/Données - Guide des données et informations requises par la CTOI des membres et parties coopérantes non contractantes. Seychelles, FAO. 166 pp. Graphic Design: Sabine Billon

The designations employed and the presentation of material in this information product do not imply the expression of any opinion whatsoever on the part of the Food and Agriculture Organization of the United Nations (FAO) concerning the legal or development status of any country, territory, city or area or of its authorities, or concerning the delimitation of its frontiers or boundaries. The mention of specific companies or products of manufacturers, whether or not these have been patented, does not imply that these have been endorsed or recommended by FAO in preference to others of a similar nature that are not mentioned.

The designations employed and the presentation of material in the map(s) do not imply the expression of any opinion whatsoever on the part of FAO concerning the legal or constitutional status of any country, territory or sea area, or concerning the delimitation of frontiers.

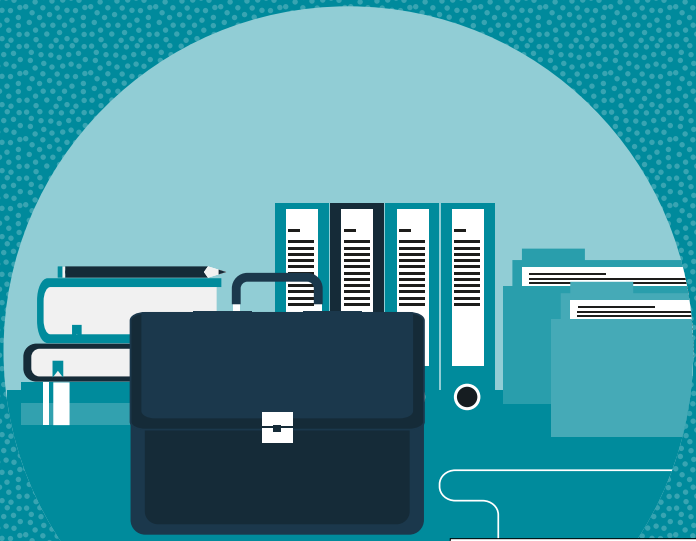
The views expressed in this information product are those of the author(s) and do not necessarily reflect the views or policies of FAO.

ISBN 978-92-5-130151-7  
© FAO, 2018

FAO encourages the use, reproduction and dissemination of material in this information product. Except where otherwise indicated, material may be copied, downloaded and printed for private study, research and teaching purposes, or for use in non-commercial products or services, provided that appropriate acknowledgement of FAO as the source and copyright holder is given and that FAO's endorsement of users' views, products or services is not implied in any way.

All requests for translation and adaptation rights, and for resale and other commercial use rights should be made via [www.fao.org/contact-us/licence-request](http://www.fao.org/contact-us/licence-request) or addressed to [copyright@fao.org](mailto:copyright@fao.org).

FAO information products are available on the FAO website ([www.fao.org/publications](http://www.fao.org/publications)) and can be purchased through [publications-sales@fao.org](mailto:publications-sales@fao.org).



# Table of **CONTENTS**

<b>ACKNOWLEDGEMENTS</b>	<i>/v</i>
<b>ACRONYMS</b>	<i>/vii</i>
<b>SUMMARY</b>	<i>/ix</i>
<b>INTRODUCTION TO THE GUIDE</b>	<i>/1</i>

---

Please NOTE: see annual calendar of all the requirements on the index card joined to this guide.

The content is divided into three sections.

<b>DATA AND INFORMATION TO BE SENT TO THE SECRETARIAT IN ACCORDANCE WITH THE SPECIFIED DEADLINE</b>	<b>/2</b>
---	-----------

---

<b>DATA AND INFORMATION TO BE SENT TO THE SECRETARIAT WHEN PROVIDING THE REPORT OF IMPLEMENTATION</b>	<b>/21</b>
---	------------

---

<b>DATA AND INFORMATION TO BE SENT ON AN EVENT BASIS (NO FIXED DATE FOR THE DEADLINE IS SPECIFIED)</b>	<b>/30</b>
--	------------

---



<b>SUBMISSION REGISTER</b>	<b>/39</b>
----------------------------	------------

---

<b>NOTEBOOK</b>	<b>/47</b>
-----------------	------------

---

<b>IOTC MEMBERS AND NON-MEMBERS</b>	<b>/60</b>
-------------------------------------	------------

---

<b>IOTC AREA OF COMPETENCE</b>	<b>/65</b>
--------------------------------	------------

---

<b>USEFUL LINKS FOR REPORTING IOTC DATA AND INFORMATION</b>	<b>/68</b>
---	------------

---

<b>DATA AND INFORMATION REPORTING CALENDAR</b>	<b>Document enclosed</b>
--	--------------------------

---

# ACKNOWLEDGEMENTS

The guide to IOTC data and information reporting requirements for Members and Cooperating Non-Contracting Parties has been developed by the IOTC Secretariat.

It has been designed and printed with the financial support of the World Bank under the Second South West Indian Ocean Fisheries Governance and Shared Growth Project (SWIOFish2).

The photographs in the manual belong to the Indian Ocean Tuna Commission except where indicated otherwise.





# ACRONYMS

<b>ALB</b>	Albacore Tuna
<b>BET</b>	Bigeye Tuna
<b>CMM</b>	Conservation and Management Measure
<b>CNCP</b>	Cooperating Non-Contracting Party
<b>CPC</b>	IOTC Contracting Party (Member) and Cooperating Non-Contracting Party
<b>EEZ</b>	Exclusive Economic Zone
<b>FAO</b>	Food and Agriculture Organization of the United Nations
<b>IOTC</b>	Indian Ocean Tuna Commission
<b>IUU</b>	Illegal, Unreported and Unregulated (fishing)
<b>LSTLV</b>	Large-scale tuna longline fishing vessel
<b>MCS</b>	Monitoring, Control and Surveillance
<b>NCP</b>	Non-contracting Party
<b>RAV</b>	Record of Authorised Vessels
<b>SKJ</b>	Skipjack Tuna
<b>UN</b>	United Nations Organization
<b>VMS</b>	Vessels Monitoring System
<b>YFT</b>	Yellowfin Tuna



# SUMMARY

The objective of the guide is to provide a working document for Members and Cooperating Non-Contracting Parties (collectively referred to as “CPCs”) to use in the implementation of the IOTC Resolutions while reporting data and information to the Commission. The content is divided into three sections.

The first section provides a detailed overview of what data and information to report on a monthly basis, in accordance with the specified deadline.

The second section presents a detailed overview of what data and information must be reported at the same deadline of the Implementation Report.

The last section guides CPCs on data and information which must be reported on an event basis (no fixed date for the deadline is specified).





# INTRODUCTION

## to the guide

Please NOTE: the exact requirements are described in the resolutions which are available from <http://www.iotc.org>.

All data should be e-mailed to [iotc-secretariat@fao.org](mailto:iotc-secretariat@fao.org) and clearly marked as to which resolution they pertain to.

### REPORTS TO SUBMIT BY MONTH FOR THE YEAR 2018

January	February	March	April	May	June
July	August	September	October	November	December

Where it is mentioned:  
it can be downloaded at



A report template exits

<http://www.iotc.org/compliance/reporting-templates>

# **DATA AND INFORMATION TO BE SENT**

to the Secretariat in  
accordance with the  
specified deadline

**JANUARY/3**

**FEBRUARY/4**

**MARCH/7**

**APRIL/8**

**JUNE/10**

**JULY/16**

**SEPTEMBER/17**

**OCTOBER/18**

**NOVEMBER/19**

**DECEMBER/20**

# JANUARY 2018

Before **1<sup>st</sup> January**, 2018:

1

**Resolution 17/01** On an interim plan for rebuilding the Indian Ocean yellowfin tuna stock in the IOTC Area of Competence

## **INFORMATION REQUIRED:**

### → PLANS FOR REDUCING THE USE OF SUPPLY VESSEL

*Paragraph 3, c):*

*Flag States shall submit plans for reducing the use of supply vessel to the Scientific Committee no later than 31<sup>st</sup> December 2017.*

## **INFORMATION REQUIRED:**

### → PURSE SEINERS SERVED BY SUPPLY VESSEL

*Paragraph 3,e):*

*CPC/flag States shall report annually before the 1<sup>st</sup> of January for the coming year of operations which Purse seiners are served by each supply vessel.*



Consult the implementation sheet:

[i-Sheet - Resolution 17/01 - Interim YFT rebuilding plan](#)

KEEP A RECORD OF THE SUBMISSION OF THE DATA AND INFORMATION BY COMPLETING THE REGISTER PAGE 39

# FEBRUARY 2018

By **15 February**, 2018:

**15**

**Resolution 10/08** Concerning a record of active vessels fishing for tunas and swordfish in the IOTC area

## INFORMATION REQUIRED:

### → LIST OF ACTIVE VESSELS

#### *Paragraph 1:*

*All IOTC Contracting Parties and Cooperating non-Contracting Parties (CPCs) with vessels fishing for tunas and swordfish in the IOTC Area of Competence, shall submit to the Secretary by 15 February every year a list of their respective vessels that were active in the Area during the previous year and that are:*

- *larger than 24 meters in length overall, or*
- *in case of vessels less than 24m, those operating in waters outside the exclusive economic zone (EEZ) of the flag State.*



A report template exists



Consult the implementation sheet:  
[i-Sheet - Resolution 10/08 - Record of active vessels](#)

👁️ SEE ANNUAL CALENDAR OF ALL THE REQUIREMENTS ON THE INDEX CARD JOINED TO THIS GUIDE



Data and information to be sent to the Secretariat  
**in accordance with the specified deadline**

**Resolution 14/05** Concerning a record of licensed foreign vessels fishing for iotc species in the IOTC area of competence and access agreement information


## **INFORMATION REQUIRED:**


### → LIST OF FOREIGN VESSELS LICENSED IN EEZ

#### *Paragraph 1:*

*All CPCs which issue licenses to foreign flag vessels to fish in their EEZ for species managed by the IOTC in the IOTC Area of Competence, shall:*

- *Submit to the Secretary a list of all foreign flag vessels to which such licenses have been issued during the previous year.*

 A report template exists

 Consult the implementation sheet:  
[i-Sheet - Resolution 14/05 - Record of licensed foreign fishing vessels](#)



*Session of the Compliance Committee, Yogyakarta, Indonesia*

By **28 February**, 2018:



Rules of Procedures - **APPENDIX V** - The Compliance Committee - Terms of Reference and Rules of Procedure

## **INFORMATION REQUIRED:**

### → **STANDARD QUESTIONNAIRE ON COMPLIANCE**

#### **Paragraph 4.1:**

*4.1 In preparation for the meeting of the IOTC Compliance Committee the IOTC Secretariat will:*

*i) send each CPC, 4 months prior to the annual meeting, a standard questionnaire on compliance with the various IOTC Resolutions governing conservation and management for receiving comments and answers from the concerned CPCs within 45 days;*



Consult the rules of procedure:  
[IOTC Rules of Procedure](#)



*Frozen bigeye tuna are subject to the statistical document programme*

Data and information to be sent to the Secretariat  
in accordance with the specified deadline

# MARCH 2018

By **06 March**, 2018:

6

**Resolution 17/03** on establishing a list of vessels presumed to have carried out illegal, unregulated and unreported fishing in the IOTC area

## INFORMATION REQUIRED:

### → LIST OF IUU VESSELS

#### *Paragraph 5:*

*A CPC in possession of information that one or more vessels has engaged in IUU fishing activities within the IOTC Area within a 24 month period prior to the annual meeting of the Compliance Committee shall submit a list of such vessels to the IOTC Executive Secretary. Such submission shall be made at least 70 days before the annual meeting of the Compliance Committee using the IOTC Reporting Form for Illegal Activity.*



A report template exists



Consult the implementation sheet:

[i-Sheet - Resolution 17/03 - List of presumed IUU Vessels](#)

👁 SEE ANNUAL CALENDAR OF ALL THE REQUIREMENTS ON THE INDEX CARD JOINED TO THIS GUIDE

# APRIL

## 2018

By **1 April**, 2018:



1

**Resolution 01/06** Concerning the IOTC bigeye tuna statistical document programme

### INFORMATION REQUIRED:

→ **SECOND SEMESTER REPORT - IMPORT OF BIGEYE TUNA**

**Paragraph 5:**

*For CPCs that import bigeye tuna, shall transmit import data for the period 1 July – 31 December (2017) of the previous year.*



A report template exists



Consult the implementation sheet:

[i-Sheet - Resolution 01/06 - Big-eye statistical document programme \(Amendments to IOTC stats forms\)](#)

👁 SEE ANNUAL CALENDAR OF ALL THE REQUIREMENTS ON THE INDEX CARD JOINED TO THIS GUIDE

By **30 April**, 2018:



**Resolution 17/03** On establishing a list of vessels presumed to have carried out illegal, unregulated and unreported fishing in the IOTC area

## INFORMATION REQUIRED:

### → COMMENTS & INFORMATION ABOUT IUU LISTED VESSELS AND THEIR ACTIVITIES

#### *Paragraph 10:*

*The flag State of a vessel included on the Draft IUU Vessel List may transmit to the IOTC Executive Secretary at least 15 days before the Annual Meeting of the Compliance Committee, any comments and information about listed vessels and their activities, including information pursuant to Paragraph 9.a) and 9.b) and information showing that the listed vessels either have or have not:*

- a. conducted fishing activities in a manner consistent with IOTC Conservation and Management Measures in force; or*
- b. conducted fishing activities in a manner consistent with the laws and regulations of a coastal State when fishing in the waters under the jurisdiction of that State, and with the law and regulations of the flag State and the Authorisation to Fish; or*
- c. conducted fishing activities exclusively for species that are not covered by the IOTC Agreement or IOTC Conservation and Management Measures*



Consult the implementation sheet:

[i-Sheet - Resolution 17/03 - List of presumed IUU Vessels](#)

 **KEEP A RECORD OF THE SUBMISSION OF THE DATA AND INFORMATION BY COMPLETING THE REGISTER PAGE PAGE 39**

# JUNE 2018

By 30 June, 2018:

30

**Resolution 12/06** On reducing incidental bycatch of seabirds in longline fisheries

## INFORMATION REQUIRED:

### → DATA ON INCIDENTAL BYCATCH OF SEABIRDS

#### *Paragraph 1 and 2:*

CPCs shall record data on seabird incidental bycatch by species and report these annually, notably through scientific observers or, where the provisions of the IOTC Regional Observer Scheme have not been fully implemented, through logbooks.



Consult the implementation sheet:

[i-Sheet - Resolution 12/06 - Reduction of seabird bycatch](#)

**Resolution 12/04** On the conservation of marine turtles

## INFORMATION REQUIRED:

### → DATA ON INTERACTIONS WITH MARINE TURTLES

#### *Paragraph 3:*

CPCs shall collect (including through logbooks and observer programs) and provide to the IOTC Secretariat no later than 30 June of the following year in accordance with Resolution 15/02 (or any subsequent revision), all data on their vessels' interactions with marine turtles. The data shall include the level of logbook or observer coverage and an estimation of total mortality of marine turtles incidentally caught in their fisheries.



Consult the implementation sheet:

[i-Sheet - Resolution 12/04 - Conservation of marine turtles](#)

**Resolution 13/04** On the conservation of cetaceans

**INFORMATION REQUIRED:**

→ **DATA ON INTERACTIONS WITH CETACEANS**

**Paragraph 7:**

CPCs shall report the information and data collected under Paragraph 3(b) and Paragraph 4, through log-books, or when an observer is onboard through observer programs, and provide to the IOTC Secretariat by 30 June of the following year and according to the timelines specified in Resolution 15/02 (or any subsequent revision).



Consult the implementation sheet:  
[i-Sheet - Resolution 13/04 - Conservation of cetaceans](#)

**Resolution 13/05** On the conservation of whale sharks (*Rhincodon typus*)

**INFORMATION REQUIRED:**

→ **DATA ON INTERACTIONS WITH WHALE SHARKS**

**Paragraph 7:**

CPCs shall report the information and data collected under Paragraph 3(b) and Paragraph 4, through log-books, or when an observer is onboard through observer programs, and provide to the IOTC Secretariat by 30 June of the following year and according to the timelines specified in Resolution 15/02 (or any subsequent revision).



Consult the implementation sheet:  
[i-Sheet - Resolution 13/05 - Conservation of whale sharks](#)

**KEEP A RECORD OF THE SUBMISSION OF THE DATA AND INFORMATION BY COMPLETING THE REGISTER PAGE 39**

**Resolution 15/01** On the recording of catch and effort by fishing vessels in the IOTC area of competence

## **INFORMATION REQUIRED:**

### → CATCH DATA

#### **Paragraph 10:**

*The Flag State shall provide all the data for any given year to the IOTC Secretariat by June 30th of the following year on an aggregated basis.*

- ▶ For additional information, consult the Guidelines for the reporting of Fisheries Statistics to the IOTC <http://www.iotc.org/data-and-statistics>



Consult the implementation sheet:  
[i-Sheet - Resolution 15/01 - Catch and effort data recording](#)



*Fishing vessels must carry fishing logbook on-board to record catch data*



**Resolution 15/02** Mandatory statistical requirements for IOTC Members

**INFORMATION REQUIRED:**

→ FISHERIES STATISTICS

**Paragraph 1:**

*Contracting Parties and Cooperating Non-Contracting Parties (CPCs) shall provide the following information to the IOTC Secretariat according to the timelines specified in Paragraph 7:*

- *Catch, effort and size frequency data from surface fleets authorised to operate in the IOTC Area of Competence and fleets operating in the coastal zones for the previous year.*
- *Provisional catch, effort and size frequency data from longline fleets authorised to operate in the IOTC Area of Competence for the previous year.*
- *Catch, effort and size frequency data from artisanal, small scale and sports fisheries.*
- *Longline fleets shall provide provisional data for the previous year no later than 30 June.*
- *All other fleets (including supply vessels) shall submit their final data for the previous year no later than 30 June.*

- ▶ For additional information, consult the Guidelines for the reporting of Fisheries Statistics to the IOTC <http://www.iotc.org/data-and-statistics>



Consult the implementation sheet:  
[i-Sheet - Resolution 15/02 - Mandatory statistical requirements](#)

**Resolution 15/03** On the vessel monitoring system (VMS) programme

**INFORMATION REQUIRED:**

→ **VMS REPORT ON IMPLEMENTATION AND TECHNICAL FAILURES**

**Paragraph 12:**

*Each CPC shall provide to the IOTC Secretariat, by 30 June each year, a report on the progress of implementation of its VMS programme, including technical failures.*



A report template exists



Consult the implementation sheet:  
[i-Sheet - Resolution 15/03 - Vessel Monitoring System](#)

**Resolution 15/05** On conservation measures for striped marlin, black marlin and blue marlin

**INFORMATION REQUIRED:**

→ **CATCH DATA FOR MARLIN SPECIES**

**Paragraph 4:**

*CPCs, in particular those employing gillnet fisheries, for which very few data exists on catch and effort, length frequencies and bycatch/discards, shall collect and report such data to the IOTC Secretariat.*



Consult the implementation sheet:  
[i-Sheet - Resolution 15/05 - CMM for striped, black and blue marlins](#)

👁️ SEE ANNUAL CALENDAR OF ALL THE REQUIREMENTS ON THE INDEX CARD JOINED TO THIS GUIDE

**Resolution 17/05** Concerning the conservation of sharks caught in association with fisheries managed by IOTC

## INFORMATION REQUIRED:

### → CATCH DATA FOR SHARKS

#### **Paragraph 6:**

*CPCs shall report data for catches of sharks no later than 30 June of the following year, in accordance with IOTC data reporting requirements and procedures in Resolution 15/02 mandatory statistical requirements for IOTC Members and Cooperating Non-Contracting Parties (CPC's) (or any subsequent superseding resolution), including all available historical data, estimates and life status of discards (dead or alive) and size frequencies.*



**Consult the implementation sheet:**  
[i-Sheet - Resolution 17/05 - Conservation of sharks](#)

**Resolution 17/08** Procedures on a fish aggregating devices (FADs) management plan, including more detailed specifications of catch reporting from FAD sets, and the development of improved FAD designs to reduce the incidence of entanglement of non-target species

## INFORMATION REQUIRED:

### → DATA ON FAD FISHERIES

#### **Paragraph 14:**

*Starting in 2016, CPCs shall submit the data elements prescribed in Annex I and Annex II to the Commission, consistent with the IOTC standards for the provision of catch and effort data, and these data shall be made available for analysis to the IOTC Scientific Committee on the aggregation level set by Resolution 15/02 (or any subsequent superseding Resolution), and under the confidentiality rules set by Resolution 12/02 (or any subsequent superseding Resolution).*



**Consult the implementation sheet:**  
[i-Sheet - Resolution 17/08 - FADs management plan requirements](#)

# JULY 2018

By **1 July**, 2018:

1

**Resolution 05/03** Relating to the establishment of an IOTC programme of inspection in port

## INFORMATION REQUIRED:

### → LIST OF FOREIGN FISHING VESSELS LANDING IN PORT

#### *Paragraph 8:*

Each CPC shall submit electronically to the IOTC Executive Secretary by 1 July of each year, the list of foreign fishing vessels which have landed in their ports tuna and tuna-like species caught in the IOTC Area in the preceding year. This information shall detail the catch composition by weight and species landed.



A report template exists



**Consult the implementation sheet:**  
[i-Sheet - Resolution 05/03 - Programme of inspection in port](#)



*Landing of tunas caught by a purse seiner, Mahé, Seychelles.*

# SEPTEMBER 2018

By **15 September**, 2018:



15

**Resolution 17/06** On establishing a programme for transshipment by large-scale fishing vessels

## INFORMATION REQUIRED:

- **LIST OF LSTLVs THAT TRANSHIPPED IN THE PREVIOUS YEAR, QUANTITIES BY SPECIES TRANSHIPPED AND ASSESSMENT OF OBSERVER REPORTS**

### *Paragraph 22:*

*The CPCs shall report annually before 15 September to the IOTC Executive Secretary:*

- *The quantities of species transhipped during the previous year.*
- *The list of LSTV's registered in the IOTC Record of which have transhipped during the previous year.*
- *A comprehensive report assessing the content and conclusions of the reports from the observers assigned to the carrier vessels which have received transhipments from your LSTLV's.*



A report template exists



**Consult the implementation sheet:**

**[i-Sheet - Resolution 17/06 - Transshipment by large scale fishing vessels](#)**

 **KEEP A RECORD OF THE SUBMISSION OF THE DATA AND INFORMATION BY COMPLETING THE REGISTER PAGE 39**

# OCTOBER 2018

By **1 October**, 2018:

1

**Resolution 01/06** Concerning the IOTC bigeye tuna statistical document programme

## INFORMATION REQUIRED:

→ **FIRST SEMESTER REPORT - IMPORT DATA OF BIGEYE TUNA**

### *Paragraph 5:*

*For CPC's that imports bigeye tuna, shall transmit the import data for the period 1 January – 30 June 2018 (of the current year).*



A report template exists



**Consult the implementation sheet:**  
[i-Sheet - Resolution 01/06 - Big-eye statistical document programme \(Amendments to IOTC stats forms\)](#)



*Session of the Scientific Committee, Mahé, Seychelles*

# NOVEMBER 2018

By **18 Novembre**, 2018:

18

**Report of the Scientific Committee SC04** – National scientific report

## INFORMATION REQUIRED:

### → NATIONAL SCIENTIFIC REPORT

#### *Paragraph 111:*

*The Scientific Committee agreed to request from countries, whether they attend or not the next session, to present the Committee with a National Report which would provide general fisheries statistics, report on the implementation of Committee recommendations, national research programs currently in place and other relevant subjects. The Committee requested the Secretariat to prepare a template with an outline of items that should be included in the report to guide in the preparation of such reports.*



A report template exists

- ▶ Note: The deadline to submit the National scientific report is 15 days before the session of the Scientific Committee.



**Consult the report of the SC04:**

<http://www.iotc.org/meetings/4th-session-scientific-committee>

**KEEP A RECORD OF THE SUBMISSION OF THE DATA AND INFORMATION BY COMPLETING THE REGISTER PAGE 39**

# DECEMBER 2018

By **30 December**, 2018:

30


**Resolution 15/02** Mandatory statistical requirements for IOTC Members

## INFORMATION REQUIRED:

### → FINAL FISHERIES STATISTICS FOR LONGLINERS

#### *Paragraph 1:*

*Final catch, effort and size frequency data from longline fleets authorised to operate in the IOTC area of competence for the previous year.*

 **Consult the implementation sheet:**  
[i-Sheet - Resolution 15/02 - Mandatory statistical requirements](#)



*Large scale tuna longline vessel (LSTLV)*



**DATA AND  
INFORMATION  
TO BE SENT**

to the Secretariat  
when providing  
the Report of  
Implementation

**IMPLEMENTATION REPORT  
DUE BY 16 MARCH 2018**

*/22*

# IMPLEMENTATION REPORT DUE BY 16 MARCH 2018

By 16 March, 2018:



## IOTC Agreement - Report of Implementation

### INFORMATION REQUIRED:

#### → REPORT OF IMPLEMENTATION

##### *Article X:*

An annual statement of the actions taken with respect to IOTC conservation and management measures since the previous meeting.



A report template exists



Consult the IOTC Agreement:  
[The Agreement](#)

ALL REPORTING REQUIREMENTS LISTED BELOW, DUE BY 16 MARCH 2018, SHALL BE REPORTED IN THE REPORT OF IMPLEMENTATION. WHEN A TEMPLATE REPORT EXISTS, SUBMIT IT TOGETHER WITH THE IMPLEMENTATION REPORT.

## Report of the Commission S17 – Letter of feedback on compliances issues

### INFORMATION REQUIRED:

#### → RESPONSE TO LETTER OF FEEDBACK

##### *Paragraph 52:*

The Commission AGREED that a deadline of 60 days before the next annual Session of the Commission be established for all CPCs to respond to the 'feedback

letters on compliance issues' from the Commission and based on the deliberations of the CoC each year.



**Consult the report of the Commission S17:**  
<http://www.iotc.org/meetings/17th-session-commission>

**Resolution 01/06** Concerning the IOTC bigeye tuna statistical document programme

### **INFORMATION REQUIRED:**

→ **ANNUAL REPORT FOR BIGEYE TUNA STATISTICAL DOCUMENT PROGRAMME**

**Paragraph 6:**

CPCs which export bigeye tuna shall examine export data upon receiving the import data from the Secretary, and report the results to the Commission annually.



A report template exists



**Consult the implementation sheet:**  
[i-Sheet - Resolution 01/06 - Big-eye statistical document programme \(Amendments to IOTC stats forms\)](#)

**Recommendation 05/07** Concerning a management standard for the tuna fishing vessels

### **INFORMATION REQUIRED:**

→ **REPORT ON MEASURES TAKEN TO MEET MINIMUM MANAGEMENT STANDARD (FOR FLAGGED VESSELS)**

**Paragraph 3:**

The CPC flag States which issues licenses to their AFVs should report annually to the Commission all measures taken to meet the minimum management standard when they issue fishing licenses to their "authorised fishing vessels".

## **Resolution 12/04** On the conservation of marine turtles

### **INFORMATION REQUIRED:**

#### → **REPORT ON PROGRESS OF IMPLEMENTATION OF FAO GUIDELINES AND THIS RESOLUTION**

##### *Paragraph 5:*

CPCs shall report to the Commission, in accordance with Article X of the IOTC Agreement, their progress of implementation of the FAO Guidelines and this Resolution.



A report template exists



Consult the implementation sheet:  
[i-Sheet - Resolution 12/04 - Conservation of marine turtles](#)

## **Resolution 12/06** On Reducing the Incidental Bycatch of Seabirds in Longline Fisheries

### **INFORMATION REQUIRED:**

#### → **REPORT ON IMPLEMENTATION OF MEASURES TO REDUCE INCIDENTAL BYCATCH OF SEABIRDS IN LONGLINE FISHERIES**

##### *Paragraph 3:*

CPCs shall provide to the Commission, as part of their annual reports, information on how they are implementing this measure (This is to include all available information on interactions with seabirds, including bycatch by fishing vessels carrying their flag or authorised to fish by them. This is to include details of species where available to enable the Scientific Committee to annually estimate seabird mortality in all fisheries within the IOTC Area of Competence).



Consult the implementation sheet:  
[i-Sheet - Resolution 12/06 - Reduction of seabird bycatch](#)

**Resolution 10/10** Concerning market related measures

**INFORMATION REQUIRED:**

→ **REPORT ON IMPORT, LANDING AND TRANSHIPMENT OF TUNA AND TUNA-LIKE FISH PRODUCTS**

*Paragraph 1:*

For CPCs that import tuna and tuna-like fish products, or in whose ports those products are landed or transhipped, should report, a range of information annually (e.g. information on vessels / owners, product data (species, weight), point of export).



A report template exists



Consult the implementation sheet:  
[i-Sheet - Resolution 10/10 - Market related measures](#)

**Resolution 11/04** On a Regional observer scheme

**INFORMATION REQUIRED:**

→ **REPORT OF THE NUMBER OF VESSELS MONITORED AND THE COVERAGE ACHIEVED BY GEAR TYPE**

*Paragraph 9:*

CPCs shall provide to the Executive Secretary and the Scientific Committee annually a report of the number of vessels monitored and the coverage achieved by gear type in accordance with the provisions of this Resolution.



Consult the implementation sheet:  
[i-Sheet - Resolution 11/04 - Regional observer scheme](#)

 **KEEP A RECORD OF THE SUBMISSION OF THE DATA AND INFORMATION BY COMPLETING THE REGISTER PAGE 39**

## Resolution 13/04 On the conservation of cetaceans

### INFORMATION REQUIRED:

#### → REPORT ON INSTANCES OF CETACEANS ENCIRCLED

##### *Paragraph 8:*

CPCs shall report, in accordance with Article X of the IOTC Agreement, any instances in which cetaceans have been encircled by the purse seine nets of their flagged vessels.



Consult the implementation sheet:  
[i-Sheet - Resolution 13/04 - Conservation of cetaceans](#)

## Resolution 13/05 On the conservation of whale sharks (*Rhincodon typus*)

### INFORMATION REQUIRED:

#### → REPORT ON INSTANCES OF WHALE SHARKS ENCIRCLED

##### *Paragraph 8:*

CPCs shall report, in accordance with Article X of the IOTC Agreement, any instances in which whale sharks have been encircled by the purse seine nets of their flagged vessels.



Consult the implementation sheet:  
[i-Sheet - Resolution 13/05 - Conservation of whale sharks](#)

 KEEP A RECORD OF THE SUBMISSION OF THE DATA AND INFORMATION BY COMPLETING THE REGISTER PAGE 39

**Resolution 16/06** On measures applicable in case of non-fulfilment of reporting obligations in the IOTC

### INFORMATION REQUIRED:

- **REPORT ON ACTIONS TAKEN TO IMPLEMENT REPORTING OBLIGATIONS FOR ALL IOTC FISHERIES**

*Paragraph 1:*

CPCs shall include information in their Annual Reports (Report of Implementation) on actions taken to implement their reporting obligations for all IOTC fisheries, including shark species caught in association with IOTC fisheries, in particular the steps taken to improve their data collection for direct and incidental catches.



Consult the implementation sheet:  
[i-Sheet - Resolution 16/06 - Non-fulfilment of reporting obligations](#)

**Resolution 17/01** On an interim plan for rebuilding the Indian Ocean Yellowfin tuna stock in the IOTC Area of Competence

### INFORMATION REQUIRED:

- **REPORT ON MEASURES TO ACHIEVE YELLOWFIN TUNA CATCH REDUCTIONS**

*Paragraph 7:*

Flag States will determine appropriate methods for achieving these catch reductions, which could include capacity reductions, effort limits, etc., and will report to the IOTC Secretariat in their Implementation Report, the measures they have taken.



Consult the implementation sheet:  
[i-Sheet - Resolution 17/01 - Interim YFT rebuilding plan](#)

**Resolution 17/06** On establishing a programme for transhipment by large-scale fishing vessels

## **INFORMATION REQUIRED:**


### → **REPORT ON TRANSHIPMENT IN FOREIGN PORTS FOR FLAG VESSELS**

#### **Annex I paragraph 6:**

In-port transhipment by LSTV - Each flag CPC of the LSTV shall include in its annual report each year to IOTC the details on the transhipments by its vessels.



A report template exists

 **Consult the implementation sheet:**  
[i-Sheet - Resolution 17/06 - Transhipment by large scale fishing vessels](#)

**Resolution 17/07** On the Prohibition to use large-scale driftnets in the IOTC Area

## **INFORMATION REQUIRED:**

### → **REPORT ON MCS ACTIONS RELATED TO LARGE-SCALE DRIFTNET FISHING ON THE HIGH SEAS**

#### **Paragraph 6:**

CPCs shall include in their Annual Reports a summary of monitoring, control, and surveillance actions related to large-scale driftnet fishing on the high seas in the IOTC Area of Competence.



**Consult the implementation sheet:**  
[i-Sheet - Resolution 17/07 - Large-Scale driftnets](#)

 **SEE ANNUAL CALENDAR OF ALL THE REQUIREMENTS ON THE INDEX CARD JOINED TO THIS GUIDE**




**Resolution 17/08** Procedures on a fish aggregating devices (FADs) management plan, including more detailed specifications of catch reporting from FAD sets, and the development of improved FAD designs to reduce the incidence of entanglement of non-target species

## INFORMATION REQUIRED:

### → REPORT ON PROGRESS OF IMPLEMENTATION OF FADs MANAGEMENT PLAN

#### *Paragraph 13:*

From 2015 on, CPCs shall submit to the Commission, 60 days before the Annual Meeting, a report on the progress of the management plans of FADs, including reviews of the initially submitted Management Plans, and including reviews of the application of the principles set out in Annex III.

 **Consult the implementation sheet:**  
[i-Sheet - Resolution 17/08 - FADs management plan requirements](#)



*Yellowfin tuna are subject to catch reductions*

# **DATA AND INFORMATION TO BE SENT**

on an event basis  
(no fixed date for the  
deadline is specified)

Data and information to be sent to the Secretariat  
on an event basis (no fixed date for the deadline is specified)

**Resolution 11/04** On a regional observer scheme

## **INFORMATION REQUIRED:**

### → OBSERVER REPORTS

#### *Paragraph 11:*

- *The CPCs shall send within 150 days at the latest each report, as far as continuous flow of report from observer placed on the longline fleet is ensured, which is recommended to be provided with 1°x1° format to the Executive Secretary, who shall make the report available to the Scientific Committee upon request.*



Consult the implementation sheet:  
[i-Sheet - Resolution 11/04 - Regional observer scheme](#)

**Resolution 14/05** concerning a record of licensed foreign vessels fishing for IOTC species in the IOTC area of competence and access agreement information

## **INFORMATION REQUIRED:**

### → INFORMATION ON MODIFICATION TO ACCESS AGREEMENT

#### *Paragraph 5:*

- *For Government to Government Access Agreement: when an access agreement is modified in a manner that changes any of the information specified in paragraph 3, these changes shall be promptly notified to the Commission.*



Consult the implementation sheet:  
[i-Sheet - Resolution 14/05 - Record of licensed foreign fishing vessels](#)

👁 SEE ANNUAL CALENDAR OF ALL THE REQUIREMENTS ON THE INDEX CARD JOINED TO THIS GUIDE

**Resolution 14/05** Concerning a record of licensed foreign vessels fishing for IOTC species in the IOTC area of competence and access agreement information

## **INFORMATION REQUIRED:**

### → LIST OF FOREIGN VESSELS DENIED A LICENCE

#### *Paragraph 6:*

- *The CPCs shall notify the ship owner and flag State concerning foreign flagged fishing vessels that requested a license under a private access agreement or under a government to government access agreement and for which the request of license was denied. If the reason for denial is related to an infringement of IOTC legislation, the IOTC Compliance Committee shall address the issue at the next session accordingly.*

## **INFORMATION REQUIRED:**

### → CHANGES TO THE TEMPLATE OF COASTAL STATE FISHING LICENSE

#### *Paragraph 8:*

- *When a coastal State fishing license is modified in a manner that changes the template, any of the information provided in it or the information provided in a) to e) of paragraph 7, these changes shall be promptly notified to the IOTC Executive Secretary.*

## **INFORMATION REQUIRED:**

### → TRANSHIPMENT DECLARATION

#### *Paragraph 15:*

- *Masters of receiving carrier vessels to transmit to the Secretariat the IOTC transshipment declaration, along with its number in the IOTC Record of Carrier Vessels within 24 hours of the completion of the transshipment.*



**Consult the implementation sheet:**  
[i-Sheet - Resolution 14/05 - Record of licensed foreign fishing vessels](#)

Data and information to be sent to the Secretariat on an event basis (no fixed date for the deadline is specified)

**Resolution 15/01** On the recording of catch and effort by fishing vessels in the IOTC area of competence

## INFORMATION REQUIRED:

### → CHANGES TO OFFICIAL LOGBOOK TEMPLATE

#### *Paragraph 4:*

- *If changes are made to the official logbook template after 15 February 2016, an updated template shall be submitted.*



Consult the implementation sheet:  
[i-Sheet - Resolution 15/01 - Catch and effort data recording](#)

**Resolution 15/04** Concerning the establishment of an IOTC record of vessels authorised to operate in the IOTC Area (note similar requirements in Recommendation 05/07 Concerning a management standard for tuna fishing vessels).

## INFORMATION REQUIRED:

### → IMO NUMBER

#### *Paragraph 2.b:*

- *Reporting on IMO number:*

*To allow the necessary time for CPCs to obtain an IMO number for eligible vessels that do not already have one, paragraph 2.b on IMO number is effective as of 1 January 2016. As of this date, CPCs shall ensure that all their fishing vessels that are registered on the IOTC Record of fishing vessels have IMO numbers issued to them. Paragraph 2.b on IMO number does not apply to vessels which are not eligible to receive IMO numbers. In assessing compliance with the paragraph above, the Commission shall take into account exceptional circumstances in which a vessel owner is not able to obtain an IMO number despite following the appropriate procedures. Flag CPCs shall report any such exceptional situations to the IOTC Secretariat.*



Consult the implementation sheet:  
[i-Sheet - Resolution 15/04 - Record of authorized vessels](#)

**Resolution 15/04** Concerning the establishment of an IOTC record of vessels authorised to operate in the IOTC Area (note similar requirements in Recommendation 05/07 Concerning a management standard for tuna fishing vessels).

## **INFORMATION REQUIRED:**

### → CHANGES TO AUTHORISATION TO FISH

#### *Paragraph 3:*

- *All CPCs which issue authorisation to fish to their flag vessels to fish for species managed by the IOTC shall submit and update this information whenever this information changes.*

## **INFORMATION REQUIRED:**

### → CHANGES TO THE LIST OF AUTHORISED VESSELS

#### *Paragraph 5:*

- *Provide any amendments to the list of vessels authorised to operate in the IOTC area.*

## **INFORMATION REQUIRED:**

### → REPORT ON MEASURES & PUNITIVE ACTIONS TAKEN AGAINST FLAG VESSELS

#### *Paragraph 8:*

*The internal actions and measures and punitive actions taken in accordance with this resolution.*

## **INFORMATION REQUIRED:**

### → REPORT ON VESSELS ENGAGED IN FISHING OR TRANSHIPMENT AND NOT ON THE IOTC LIST OF AUTHORISED VESSELS

#### *Paragraph 10:*

- *Provide factual information when there are reasonable grounds for suspecting vessels not on the IOTC List of Authorised Vessels is engaged in fishing or transshipment of tuna or tuna-like species in the IOTC Area.*

Data and information to be sent to the Secretariat  
on an event basis (no fixed date for the deadline is specified)

**Resolution 16/11** On Port State measures to prevent, deter and eliminate illegal, unreported and unregulated fishing

### **INFORMATION REQUIRED:**

#### → REPORT ON DENIAL OF ENTRY INTO PORT

**Paragraph 7.3:**

- Port State CPCs that have denied a foreign fishing vessel entry into its port shall communicate its decision to the IOTC secretariat.
- 

### **INFORMATION REQUIRED:**

#### → REPORT ON DENIAL OF USE OF PORT

**Paragraph 9.3:**

- Port State CPCs that have denied a foreign fishing vessel the use of the port for landing, transshipping, packaging and processing of fish that have not been previously landed and for other port services shall promptly notify IOTC Secretariat.
- 

### **INFORMATION REQUIRED:**

#### → REPORT ON WITHDRAWAL OF DENIAL OF USE OF PORT

**Paragraph 9.5:**

- Port State CPCs that have withdrawn its denial, shall promptly notify the IOTC Secretariat.
- 

### **INFORMATION REQUIRED:**

#### → SUBMISSION OF INSPECTION REPORTS

**Paragraph 13.1:**

- Port State CPCs shall, within three full working days of the completion of an inspection, transmit by electronic means a copy of the inspection report and, upon request, an original or a certified copy thereof, to the IOTC Secretariat.
-

**Resolution 16/11** On Port State measures to prevent, deter and eliminate illegal, unreported and unregulated fishing

## **INFORMATION REQUIRED:**

### → **REPORT OF VESSELS ENGAGED IN IUU FISHING FOLLOWING AN INSPECTION**

#### **Paragraph 15.1:**

- *Where, following an inspection, there are clear grounds for believing that a vessel has engaged in IUU fishing or fishing related activities the Port State CPCs shall promptly notify the IOTC Secretariat.*



**Consult the implementation sheet:**  
[i-Sheet - Resolution 16/11 - Port State measures](#)

**Resolution 17/03** On establishing a list of vessels presumed to have carried out illegal, unregulated and unreported fishing in the IOTC Area.

## **INFORMATION REQUIRED:**

### → **REPORT OF ADDITIONAL INFORMATION REGARDING VESSELS ON THE DRAFT IUU VESSELS LIST**

#### **Draft IOTC IUU list - Paragraph 12:**

*A CPC may at any time submit to the IOTC Executive Secretary any additional information regarding vessels on the Draft IUU list, which might be relevant to the establishment of the IUU Vessel List. If the IOTC Secretariat receive this information after the Draft IUU Vessel List has been circulated to CPCs, it will circulate the information to all CPCs and to the flag States of listed vessels as soon as practicable.*

## **INFORMATION REQUIRED:**

### → **SUBMIT INFORMATION FOR THE REMOVAL OF VESSEL FROM IUU VESSELS LIST**

#### **Vessel Delisting Procedures - Paragraph 22:**

*The flag State of a vessel included in the IUU Vessel List may request the removal of the vessel from the list at any time, including during the inter-sessional period, by providing information to the IOTC Executive Secretary*



Data and information to be sent to the Secretariat  
on an event basis (no fixed date for the deadline is specified)

**Resolution 17/03** On establishing a list of vessels presumed to have carried out illegal, unregulated and unreported fishing in the IOTC Area.

### **INFORMATION REQUIRED:**

→ **REPORT NEW OR CHANGED INFORMATION FOR VESSELS ON THE IUU VESSEL LIST**

*Change of details of vessels included on the IUU Vessels List - Paragraph 30:*

*A CPC with new or changed information for vessels on the IUU Vessel List in relation to the details in paragraphs 1 to 8 of Annex II shall, as soon as practicable, transmit such information to the IOTC Executive Secretary*



**Consult the implementation sheet:  
i-Sheet - Resolution 17/03 - List of presumed IUU Vessels**

**Resolution 17/06** On establishing a programme for transshipment by large-scale fishing vessels

### **INFORMATION REQUIRED:**

→ **CHANGES TO THE LIST OF AUTHORISED CARRIER VESSELS**

*Paragraph 7:*

- *Any changes to the list of carrier vessels that are authorised to receive at-sea transshipments from your LSTLV's in the IOTC Area.*

**KEEP A RECORD OF THE SUBMISSION OF THE DATA AND INFORMATION BY COMPLETING THE REGISTER PAGE 39**

**Resolution 17/07** On the Prohibition to use large-scale driftnets in the IOTC Area

## **INFORMATION REQUIRED:**

### → **LIST OF VESSELS USING LARGE-SCALE DRIFTNETS IN THE EEZs**

#### **Paragraph 5:**

*For the purposes of monitoring the implementation of this Resolution, CPCs must notify the Secretariat of any CPC-flagged vessel using large-scale driftnets in their EEZs before the 31<sup>st</sup> of December 2020.*



**Consult the implementation sheet:**  
[i-Sheet - Resolution 17/07 - Large-Scale driftnets](#)

**SEE ANNUAL CALENDAR OF ALL THE REQUIREMENTS ON THE INDEX CARD JOINED TO THIS GUIDE**

# **SUBMISSION REGISTER**

Keep a record of the submission of the data and information by completing the below table

Submission date	Resolution	Requirements	Name of the person
15/03/2018	16/11	Denial of entry in port	Kevin Boyle

Submission date	Resolution	Requirements	Name of the person

Submission date	Resolution	Requirements	Name of the person

Submission date	Resolution	Requirements	Name of the person

Submission date	Resolution	Requirements	Name of the person



Submission date	Resolution	Requirements	Name of the person

Submission date	Resolution	Requirements	Name of the person

# NOTEBOOK



























# **IOTC MEMBERS AND NON-MEMBERS**



## **COMMISSION CONTRACTING PARTIES (MEMBERS)**

Membership of IOTC is open to Indian Ocean coastal countries and to countries or regional economic integration organisations which are members of the UN or one of its specialised agencies, and are fishing for tuna in the Indian Ocean. There are currently 31 Contracting Parties (Members), the majority of which are Nation States.

## **COMMISSION COOPERATING NON-CONTRACTING PARTIES (CNCP)**

In addition to being a full Member, States with a real interest in the Indian Ocean fisheries of tuna and tuna-like species can participate in the IOTC process as a Cooperating Non-Contracting Party (CNCP). This status is granted for a period of one year, upon request from the State. CNCPs are not obliged to pay a financial contribution, but they do not enjoy voting rights on IOTC matters, and they are subject to the same regulations as the full Members. CNCP status is reviewed annually by the Commission.

- ▶ The current membership of the Commission are listed in the below table.

→ **Contracting Parties to the Indian Ocean Tuna Commission (Date of acceptance)**

<b>Australia</b>	(13 Nov 1996)
<b>China</b>	(14 Oct 1998)
<b>Comoros</b>	(14 Aug 2001)
<b>Eritrea</b>	(9 Aug 1994)
<b>European Community</b>	(27 Oct 1995)
<b>France (Territories)</b>	(3 Dec 1996)
<b>Guinea</b>	(31 Jan 2005)
<b>India</b>	(13 Mar 1995)
<b>Indonesia</b>	(09 July 2007)
<b>Iran, Islamic Republic of</b>	(28 Jan 2002)
<b>Japan</b>	(26 Jun 1996)
<b>Kenya</b>	(29 Sep 2004)
<b>Korea, Republic of</b>	(27 Mar 1996)
<b>Madagascar</b>	(10 Jan 1996)
<b>Malaysia</b>	(22 May 1998)
<b>Maldives</b>	(13 July 2011)

<b>Mauritius</b>	(27 Dec 1994)
<b>Mozambique</b>	(13 Feb 2012)
<b>Oman, Sultanate of</b>	(5 April 2000)
<b>Pakistan</b>	(27 Apr 1995)
<b>Philippines</b>	(9 Jan 2004)
<b>Seychelles</b>	(26 Jul 1995)
<b>Sierra Leone</b>	(01 Jul 2008)
<b>Somalia</b>	(22 May 2014)
<b>South Africa</b>	(16 Feb 2016)
<b>Sri Lanka</b>	(13 Jun 1994)
<b>Sudan</b>	(3 Dec 1996)
<b>Thailand</b>	(17 Mar 1997)
<b>United Kingdom (Territories)</b>	(31 Mar 1995)
<b>United Republic of Tanzania</b>	(18 Apr 2007)
<b>Yemen</b>	(20 Jul 2012)

→ **Cooperating Non-Contracting Parties to the Indian Ocean Tuna Commission**

<b>Bangladesh</b>	(Since 2015)
<b>Liberia</b>	(Since 2015)
<b>Senegal</b>	(Since 2006)

# **IOTC AREA OF COMPETENCE**

**IOTC AGREEMENT:**  
ARTICLE II.  
AREA OF COMPETENCE

"The area of competence of the Commission (hereinafter referred to as the "Area") shall be the Indian Ocean (defined for the purpose of this Agreement as being FAO statistical areas 51 and 57 as shown on the map set out in Annex A to this Agreement) and adjacent seas, north of the Antarctic Convergence, insofar as it is necessary to cover such seas for the purpose of conserving and managing stocks that migrate into or out of the Indian Ocean."

- ▶ Note: The Commission, at its 4th Session in 1999 agreed to modify the western boundary of the IOTC area of competence from 30°E to 20°E, thus eliminating the gap between the areas covered by IOTC and ICCAT.

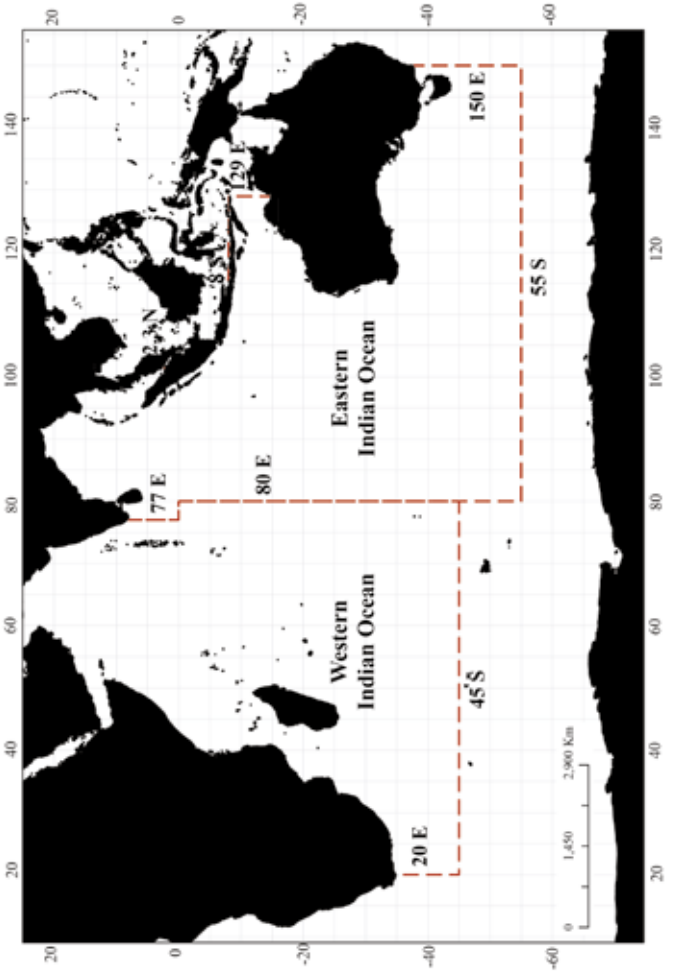


Figure 1: Map of the IOTC Area of Competence (source: IOTC)

**USEFUL LINKS**  
for reporting IOTC  
data and information



→ **COMPLIANCE**

Reporting templates

<http://www.iotc.org/compliance/reporting-templates>

→ **DATA AND STATISTICS**

<http://www.iotc.org/data-and-statistics>

IOTC Resolution 15/02 On Mandatory Statistical Requirements

<http://www.iotc.org/cmm/resolution-1502-mandatory-statistical-reporting-requirements-iotc-contracting-parties-and>

Guidelines for the reporting of fisheries statistics to the IOTC

[http://www.iotc.org/sites/default/files/Guidelines\\_Data\\_Reporting\\_IOTC1.pdf](http://www.iotc.org/sites/default/files/Guidelines_Data_Reporting_IOTC1.pdf)

Reporting data to the IOTC

<http://www.iotc.org/data-and-statistics#Reporting>

Status of IOTC fisheries statistics and data quality

<http://www.iotc.org/data/status-reporting-iotc-stats>

Datasets available

<http://www.iotc.org/data/datasets>

→ **REGIONAL OBSERVER SCHEME: SCIENCE**

IOTC Resolution 11/04 On a regional observer scheme

- ▶ IOTC Observer Trip Report Template (ZIP file) and IOTC Observer Forms (available in English and in French)

<http://www.iotc.org/science/regional-observer-scheme-science>

→ **IOTC ONLINE DATA QUERYING SERVICE**

<http://www.iotc.org/iotc-online-data-querying-service>

→ **DATA CONFIDENTIALITY POLICY**

IOTC Resolution 12/02 On Data Confidentiality Policy and Procedures

<http://www.iotc.org/cmm/resolution-1202-data-confidentiality-policy-and-procedures>



Funded by the SWIOFISH 2  
and World Bank



**THE WORLD BANK**

# **FOOD AND AGRICULTURE ORGANIZATION OF THE UNITED NATIONS**

Viale delle Terme di Caracalla  
00153 Rome, Italy

Tel: (+39) 06 57051  
E-mail: [FAO-HQ@fao.org](mailto:FAO-HQ@fao.org)

[www.fao.org](http://www.fao.org)

## **INDIAN OCEAN TUNA COMMISSION**

Le Chantier Mall  
PO Box 1011, Victoria, Seychelles

Tel: + 248 422 54 94  
Fax: + 248 422 43 64  
E-mail: [iotc-secretariat@fao.org](mailto:iotc-secretariat@fao.org)

[www.iotc.org](http://www.iotc.org)

ISBN 978-92-5-1301151-7



9 7 8 9 2 5 1 3 0 1 5 1 7

I8413B/1/01.18