

Joint Research Centre (JRC)



Development of a Management Strategy Evaluation Process for IOTC

Iago Mosqueira

FishReg – Maritime Affairs Unit

IPSC - Institute for the Protection and Security of the Citizen

Ispra - Italy

<http://ipsc.jrc.ec.europa.eu/>

Need for management plans

COM 2010-11 support, request for 2014

Kobe III Joint MSE Technical Working Group

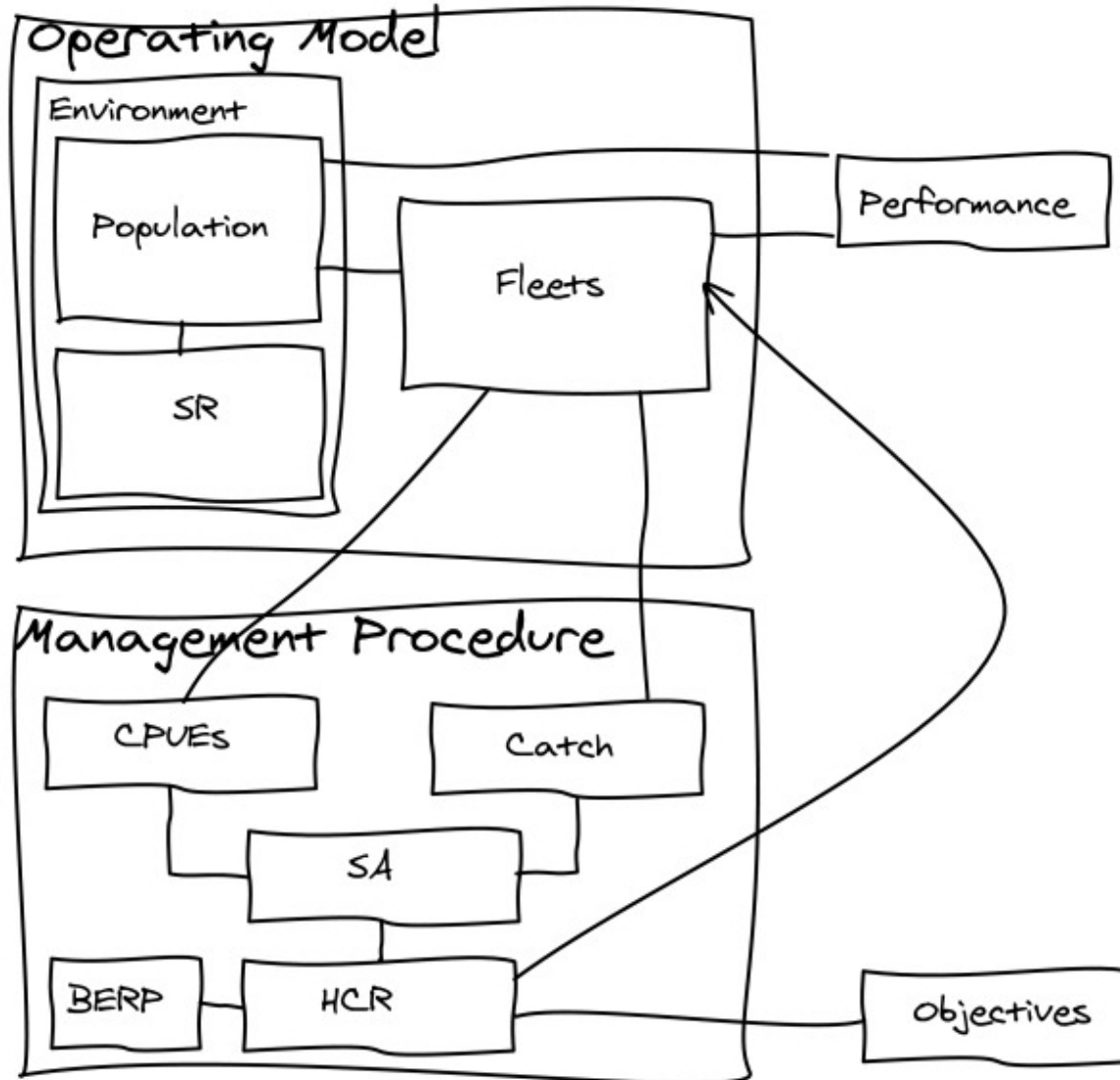
Current SA as OM starting point

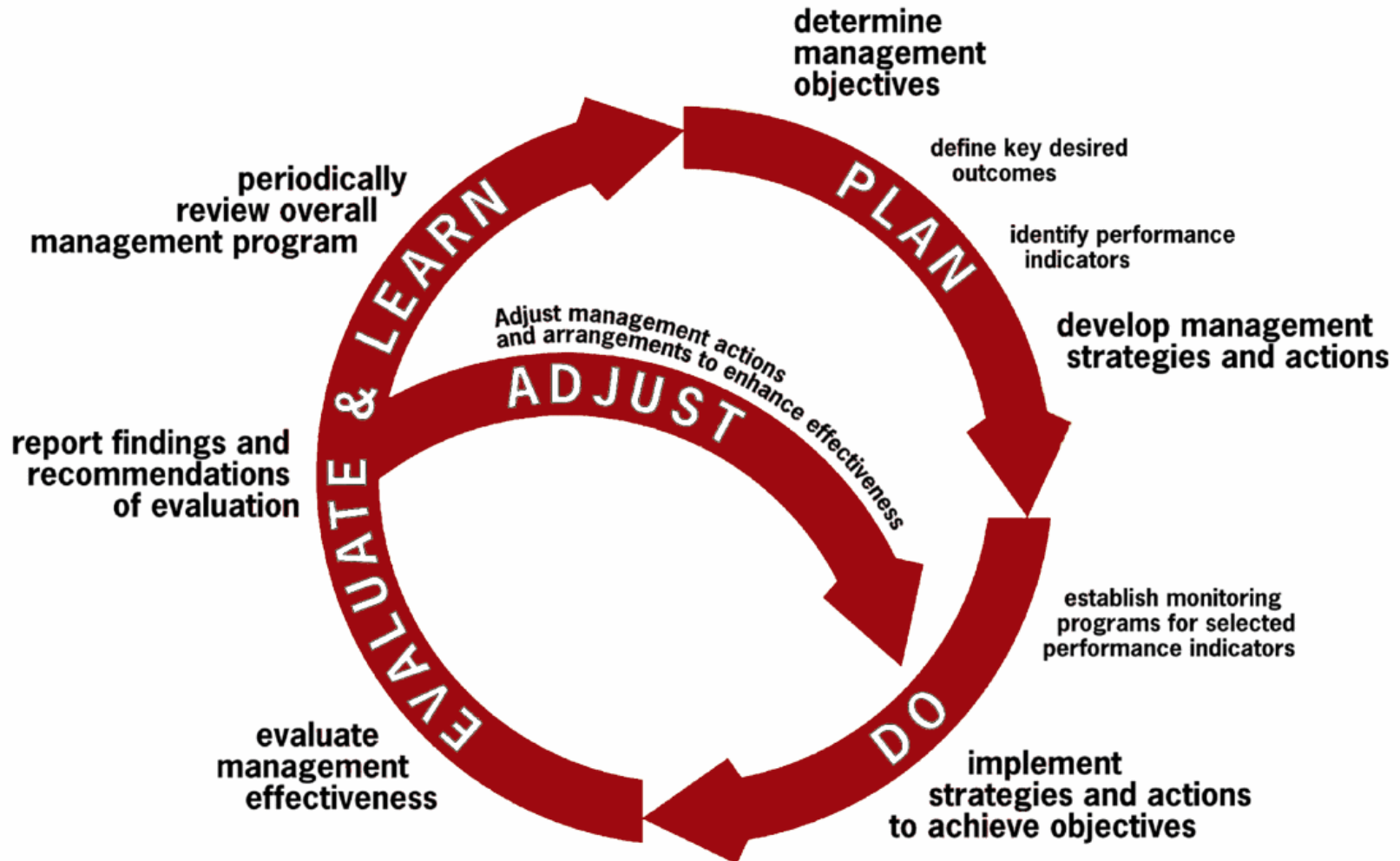
Distributed development model

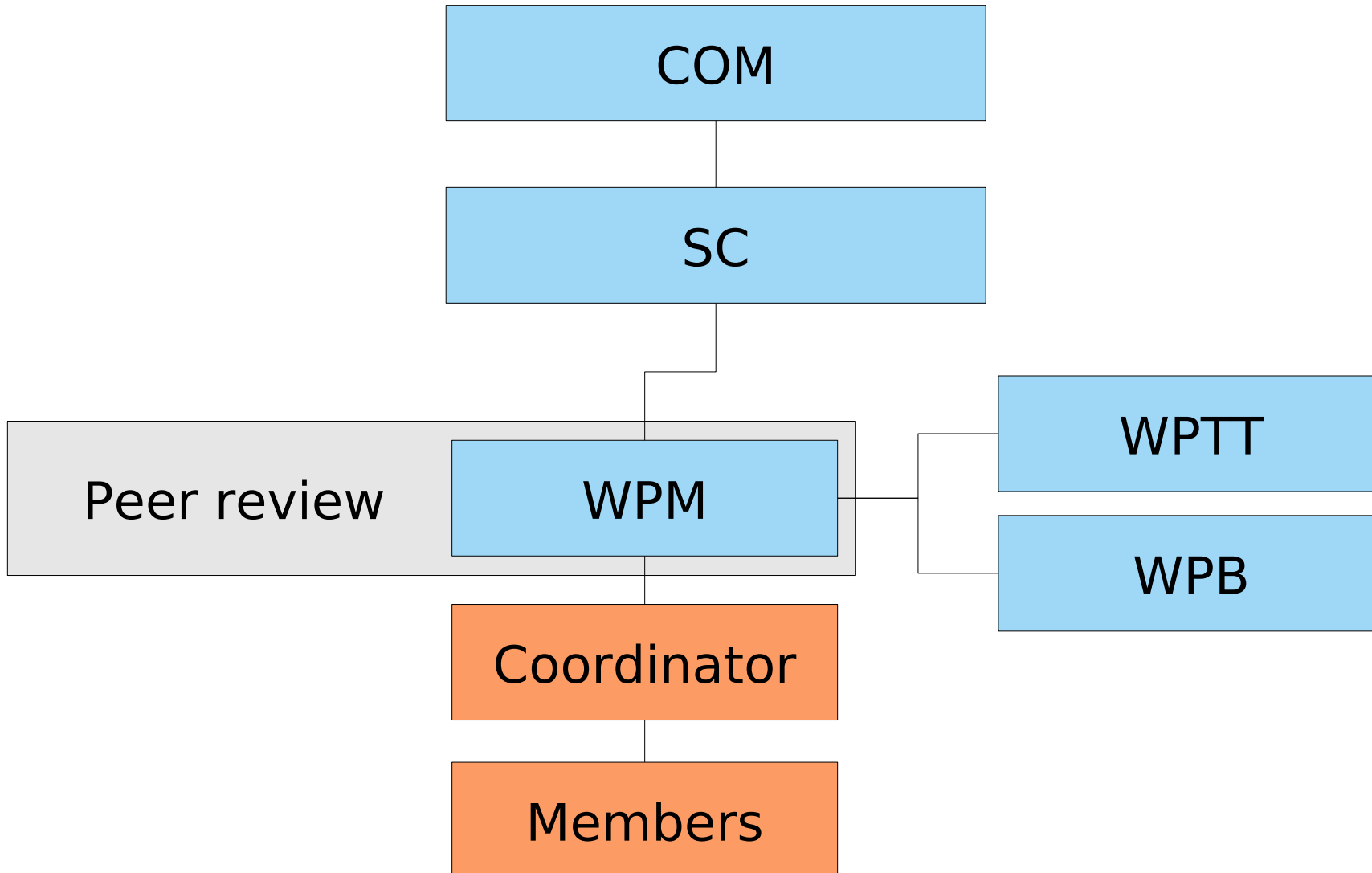
Dialogue on objectives, results, presentation

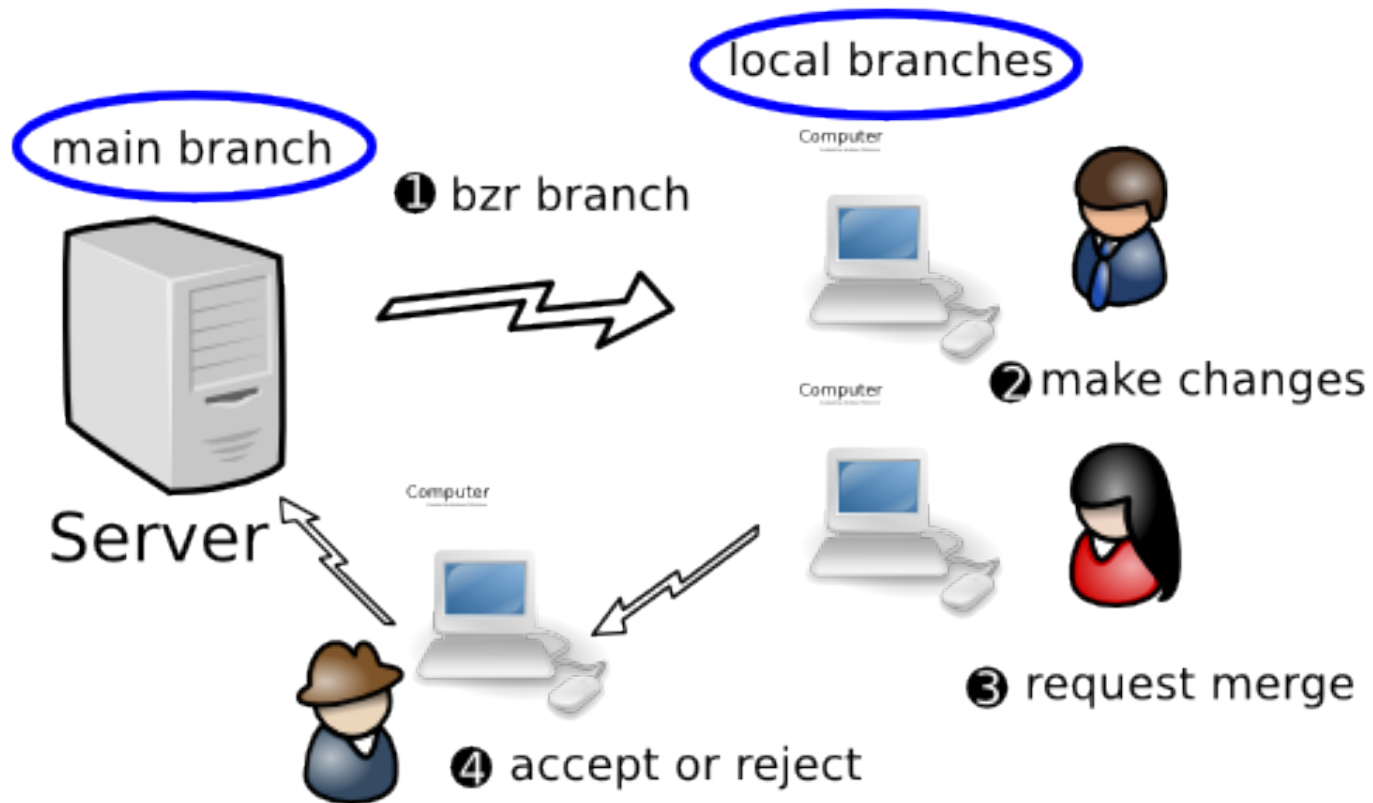
BUT: no magic solutions, need for compromise

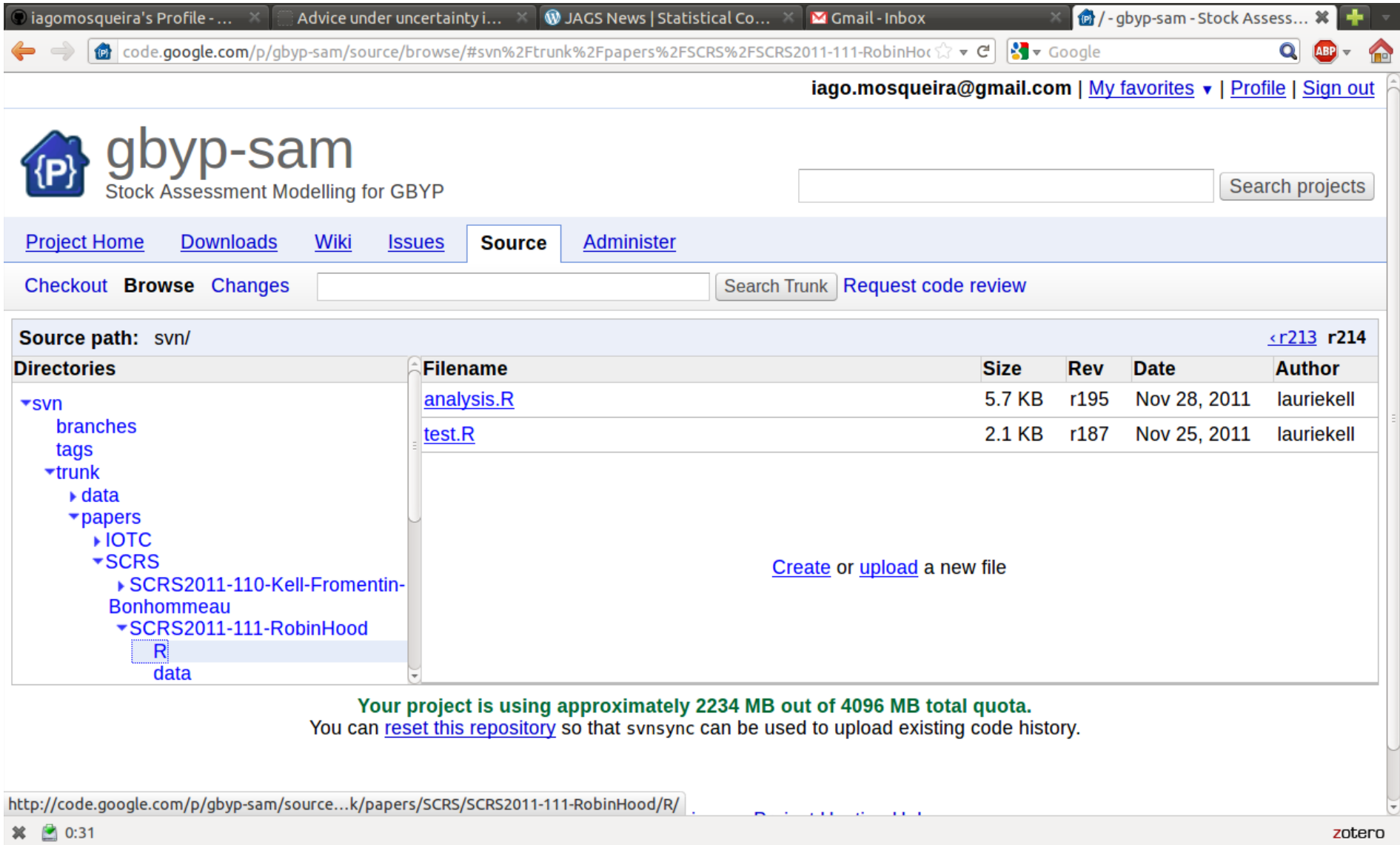
- Uncertainty & risk – safer lower yields
- $\max(\text{YPR})$ vs. $\max(\text{Y})$ vs. $\min(\text{P}[\text{SSB} < \text{SSB}_{\text{MSY}}])$ vs. $\min(\text{P}[\text{Rec} < \text{Rec}_{1990-2010}])$











The screenshot shows a web browser window with several tabs open. The active tab is 'code.google.com/p/gby-p-sam/source/browse/#svn%2Ftrunk%2Fpapers%2FSCRS%2FSCRS2011-111-RobinHoo...'. The page title is 'gby-p-sam Stock Assessment Modelling for GBYP'. The user is logged in as 'iago.mosqueira@gmail.com'. The page has a navigation menu with 'Project Home', 'Downloads', 'Wiki', 'Issues', 'Source', and 'Administer'. Below the menu, there are links for 'Checkout', 'Browse', 'Changes', 'Search Trunk', and 'Request code review'. The main content area shows the source path 'svn/' and a table of files. The table has columns for 'Filename', 'Size', 'Rev', 'Date', and 'Author'. The files listed are 'analysis.R' (5.7 KB, r195, Nov 28, 2011, lauriekell) and 'test.R' (2.1 KB, r187, Nov 25, 2011, lauriekell). There is a link to 'Create or upload a new file'. At the bottom, there is a message: 'Your project is using approximately 2234 MB out of 4096 MB total quota. You can reset this repository so that svnsync can be used to upload existing code history.' The browser's address bar shows the URL 'http://code.google.com/p/gby-p-sam/source...k/papers/SCRS/SCRS2011-111-RobinHoo/R/'. The system tray at the bottom shows the time '0:31' and the 'zotero' application.

Source path: [svn/](#) [<r213](#) [r214](#)

Directories	Filename	Size	Rev	Date	Author
<ul style="list-style-type: none"> ▼ svn <ul style="list-style-type: none"> branches tags ▼ trunk <ul style="list-style-type: none"> ▶ data ▼ papers <ul style="list-style-type: none"> ▶ IOTC ▼ SCRS <ul style="list-style-type: none"> ▶ SCRS2011-110-Kell-Fromentin-Bonhommeau ▼ SCRS2011-111-RobinHood <ul style="list-style-type: none"> R data 	<ul style="list-style-type: none"> analysis.R test.R 	5.7 KB	r195	Nov 28, 2011	lauriekell
		2.1 KB	r187	Nov 25, 2011	lauriekell

[Create](#) or [upload](#) a new file

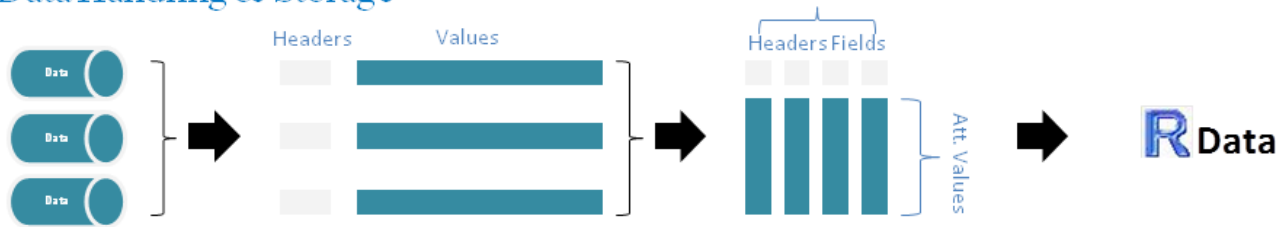
Your project is using approximately 2234 MB out of 4096 MB total quota.
You can [reset this repository](#) so that svnsync can be used to upload existing code history.

http://code.google.com/p/gby-p-sam/source...k/papers/SCRS/SCRS2011-111-RobinHoo/R/

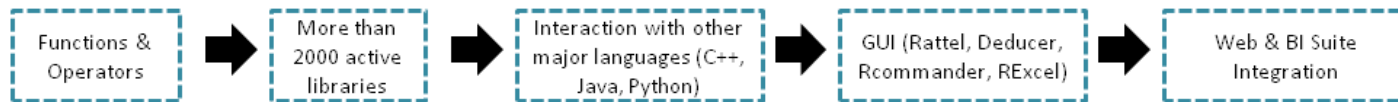
0:31 zotero

R Capabilities

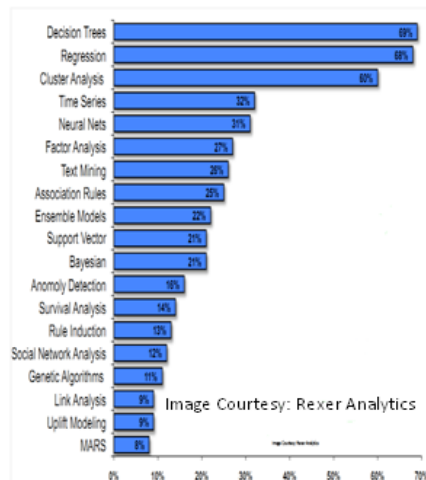
Data Handling & Storage



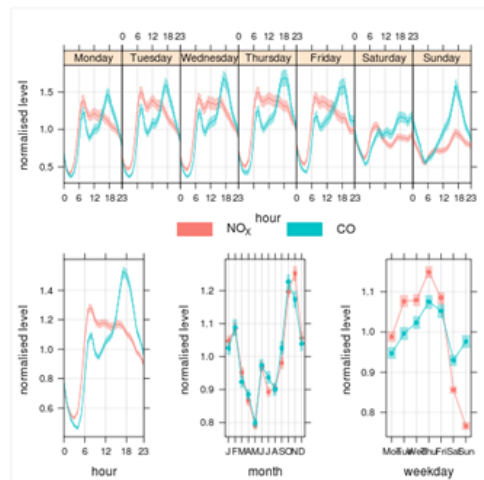
Integrated Statistical Suite



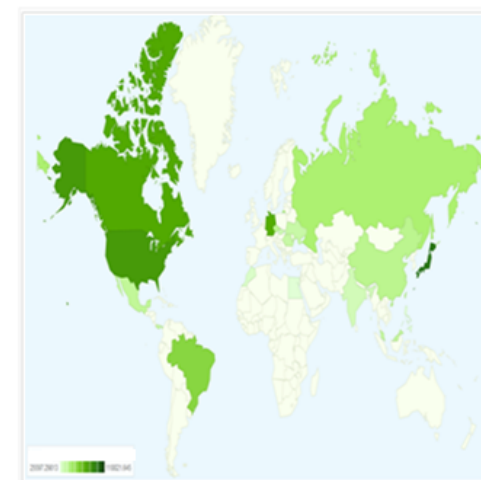
Statistical Features



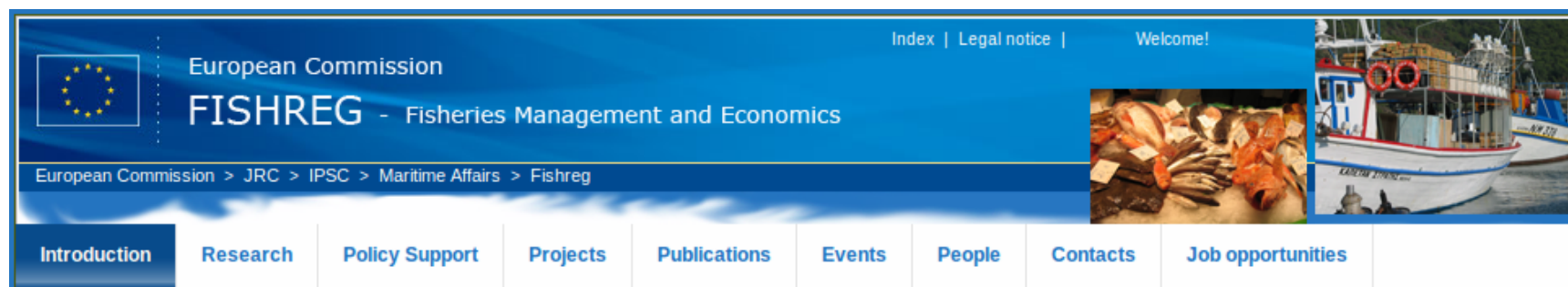
Graphical



Web-Integration

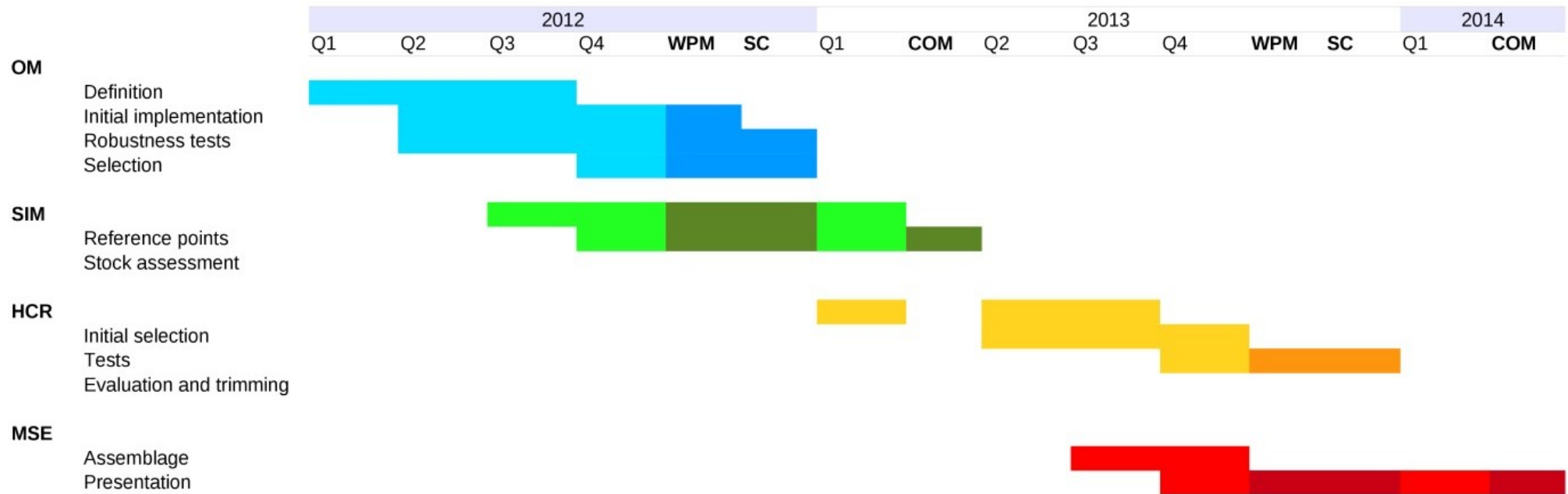


EC JRC – R/FLR for Fisheries Science Jan & July 2012-2013



ICES – MSE using R & FLR Jan 2013





Initiate work via WPM

- _ Co-ordinator(s)
- _ Interested scientists
- _ Setup infrastructure
- _ Technical decisions
- _ Detailed workplan: OM, HCRs
- _ Basic protocols & workflows

Stock precedence: YFT & SWO, later BET & SKJ

Engage in Kobe MSE process

Gather opinion on objectives: COM 2012

Design peer review process

Communicate plan to Commission

- _ IOTC-2011—S15-R, Paragraph 103