

APPENDIX 15

EXECUTIVE SUMMARY: INDO-PACIFIC SAILFISH (2024)



Table 1. Status of Indo-Pacific sailfish (*Istiophorus platypterus*) in the Indian Ocean

Area ¹	Indicators		2022 stock status determination ³
Indian Ocean	Catch 2023 ² (t)	32,154	54%
	Average catch 2019-2023 (t)	32,386	
	MSY (1,000 t) (80% CI)	25.9 (20.8 – 34.2)	
	F _{MSY} (80% CI)	0.19 (0.15 - 0.24)	
	B _{MSY} (1,000 t) (80% CI)	138 (108–186)	
	F ₂₀₁₉ /F _{MSY} (80% CI)	0.98 (0.65 – 1.42)	
	B ₂₀₁₉ /B _{MSY} (80% CI)	1.17 (0.94 – 1.42)	
	B ₂₀₁₉ /B ₀ (80% CI)	0.58 (0.47 – 0.71)	

¹ Boundaries for the Indian Ocean stock assessment are defined as the IOTC area of competence

² Proportion of 2023 catch estimated or partially estimated by IOTC Secretariat: 31.5%

³ 2019 is the final year that data were available for this assessment

Colour key	Stock overfished (B _{year} /B _{MSY} < 1)	Stock not overfished (B _{year} /B _{MSY} ≥ 1)
Stock subject to overfishing (F _{year} /F _{MSY} > 1)	7%	39%
Stock not subject to overfishing (F _{year} /F _{MSY} ≤ 1)	0%	54%
Not assessed/Uncertain/Unknown		

The percentages are calculated as the proportion of model terminal values that fall within each quadrant with model weights taken into account

INDIAN OCEAN STOCK – MANAGEMENT ADVICE

Stock status. No new stock assessment was carried out for Indo-Pacific Sailfish in 2024, thus the stock status is determined on basis of the 2022 stock assessment based on JABBA (using data up to 2019). Data poor methods (C-MSY and SFA) applied to Indo-Pacific Sailfish in 2019 rely on catch data only, which is highly uncertain for this species, and resulted in the stock status determined to be uncertain. To overcome the lack of abundance indices for this species, this assessment incorporated length-frequency data to estimate annual Spawning Potential Ratio (SPR). Normalised annual estimates of SPR were assumed to be proportional to biomass and incorporated as an index of relative abundance in the JABBA model (assuming no trends in annual recruitment in the long term). This is a novel technique applied to overcome the paucity of abundance data for SFA. The results indicate that there has been a 41% decline in SPR since 1970. B/B_{MSY} declined consistently from the early-1980s, while F/F_{MSY} gradually increased from 1980, peaking in 2018 at 1.1. The latest (2019) estimate of B/B_{MSY} was 1.17, while the F/F_{MSY} estimate was 0.98. On the weight-of-evidence available in 2022, the stock status of Indo-Pacific sailfish is determined to be **not overfished nor subject to overfishing** (Table 1; Fig. 3).

Outlook. Catches have exceeded the estimated MSY since 2013 and the current catches (average of 32,386 t in the last 5 years, 2019-2023) are substantially higher than the current MSY estimate of 25,905 t. This increase in coastal gillnet longline catches and fishing effort in recent years is a substantial cause for concern for the Indian Ocean stock, however there is not sufficient information to evaluate the effect this will have on the resource. It is also noted that the 2020, 2021 and 2022 catches exceed the catch limit prescribed in [Resolution 18/05](#) (25,000 t).

Management advice. The catch limits as stipulated in [Resolution 18/05](#) have been exceeded since 2020, which as per resolution 18/05, requires a review of the resolution. Furthermore, these limits are not based on estimates of most recent stock assessment. Thus, it is recommended that the Commission urgently revise 18/05 to incorporate limits that reflect the most recent stock assessment and projections and review and where necessary revise the implementation and effectiveness of the measures contained in this Resolution. In spite of the Kobe green status of the stock, it is recommended that the Commission review the implementation and effectiveness of the measures contained in this Resolution and consider the adoption of additional conservation and management measures. The Commission should provide mechanisms to ensure that catch limits are not exceeded by all concerned fisheries. Research emphasis on further developing possible CPUE indicators from coastal gillnet and longline fisheries, and further exploration of stock assessment approaches for data poor fisheries are warranted. Given the limited data being reported for coastal fisheries, and the importance of sports fisheries for this species, efforts must be made to rectify these information gaps.

The following key points should also be noted:

- **Maximum Sustainable Yield (MSY):** estimate for the Indian Ocean stock is 25,905 t.
- **Provisional reference points:** although the Commission adopted reference points for swordfish in [Resolution 15/10](#) on target and limit reference points and a decision framework, no such interim reference points have been established for Indo-Pacific sailfish.
- **Main fisheries (mean annual catch 2019-2023):** Indo-Pacific sailfish are caught using gillnet (70.2%), followed by line (25.7%) and longline (2.9%). The remaining catches taken with other gears contributed to 1.1% of the total catches in recent years (**Fig. 1**).
- **Main fleets (mean annual catch 2019-2023):** the majority of Indo-Pacific sailfish catches are attributed to vessels flagged to I. R. Iran (43.6%) followed by India (21.2%) and Sri Lanka (6.2%). The 33 other fleets catching Indo-Pacific sailfish contributed to 28.9% of the total catch in recent years(**Fig. 2**).

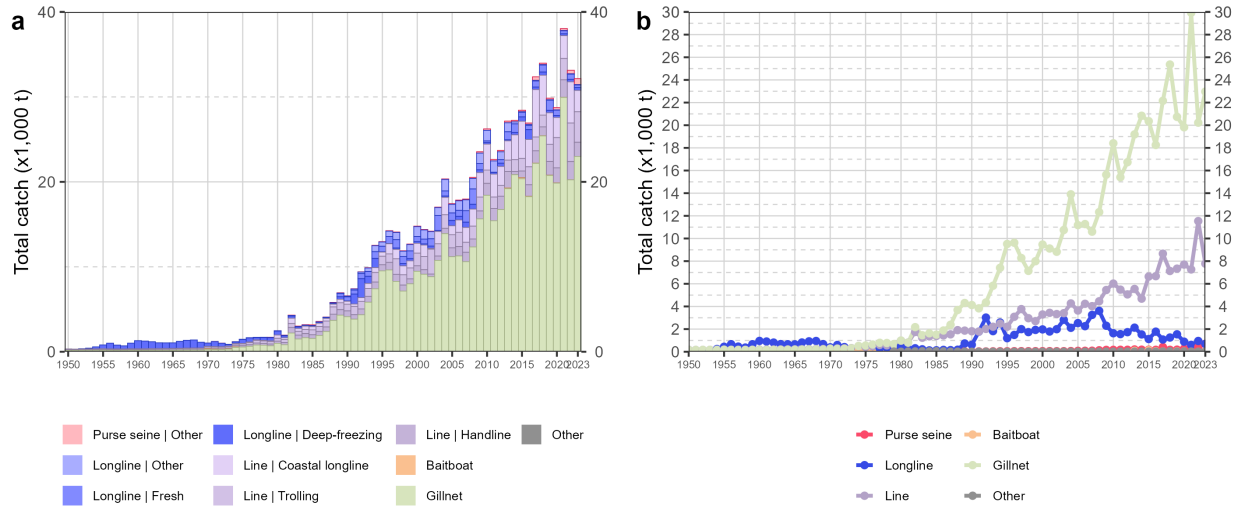


Fig. 1. Annual time series of (a) cumulative nominal catches (metric tons; t) by fishery and (b) individual nominal catches (metric tons; t) by fishery group for Indo-Pacific sailfish during 1950-2023. Longline | Other: swordfish and sharks-targeted longlines; Other: all remaining fishing gears

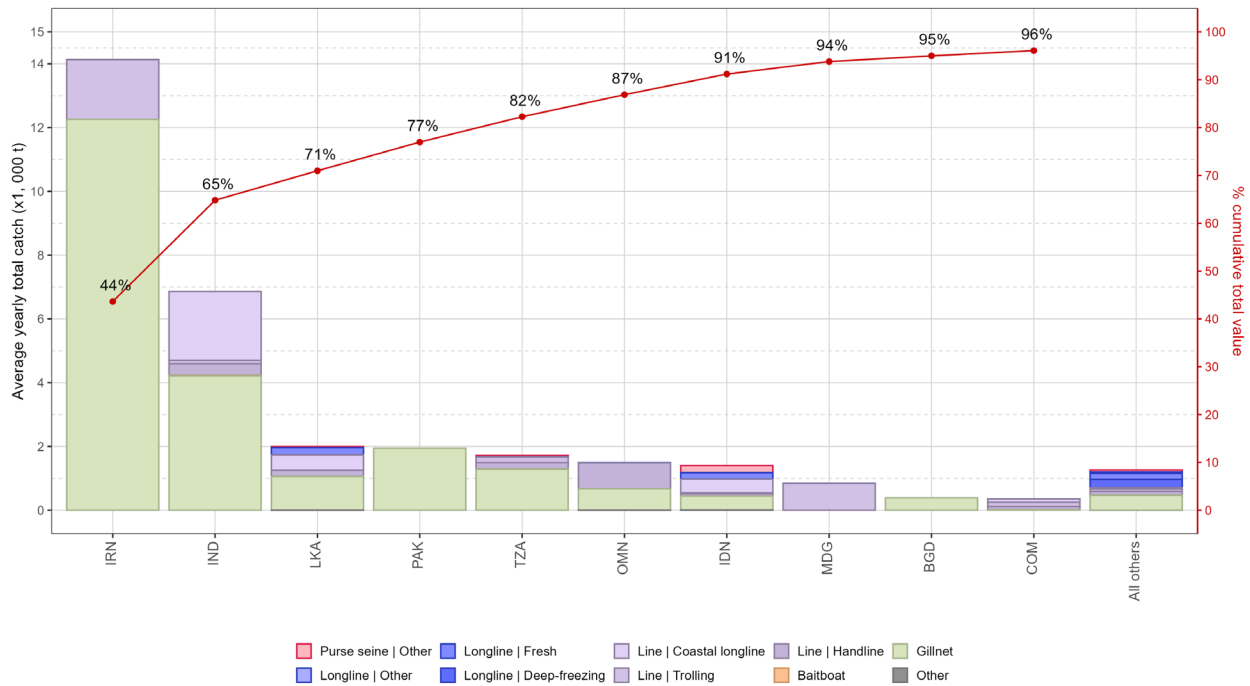


Fig. 2. Mean annual catches (metric tons; t) of Indo-Pacific sailfish by fleet and fishery between 2019 and 2023, with indication of cumulative catches by fleet. Longline | Other: swordfish and sharks-targeted longlines; Other: all remaining fishing gears

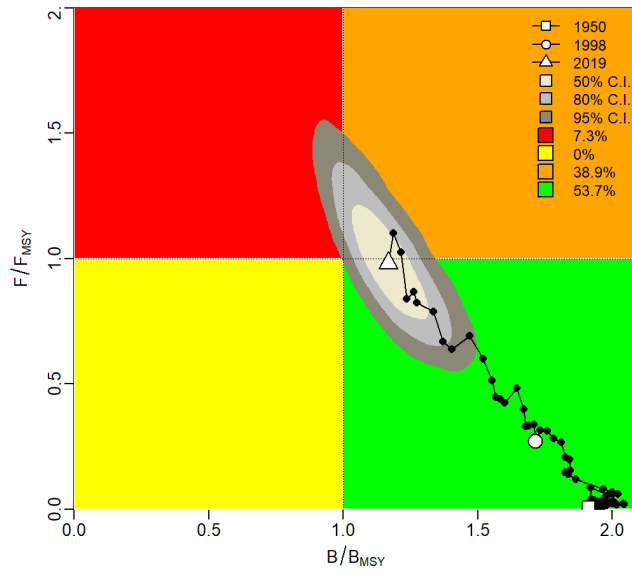


Fig. 3. Indo-Pacific sailfish: Kobe plot showing estimated trajectories (1950-2019) of B/B_{MSY} and F/F_{MSY} . Different grey shaded areas denote the 50%, 80%, and 95% credibility interval for the terminal assessment year. The probability of terminal year points falling within each quadrant is indicated in the figure legend.