

## Foreign Tuna Fleets Unloading in Phuket, Thailand During 1995-2012

Praulai Nootmorn, Supachai Rodpradit, Thumawadee Chaiyen and Sampan Panjarat

Andaman Sea Fisheries Research and Development Center 77  
Tumbon Vichit, Maung District, Phuket 83000 Thailand  
e-mail:afdecfish@yahoo.com

### SUMMARY

Both of unloaded tuna from longline and purse seine fisheries are examined in term of effort, catch and value, species composition, landing production categorized by flag countries, size of fish as well as the relevance information and activity of port sampling and sampling size. The objective of this study is to follow up the data on tuna fisheries in the Indian Ocean, thus the available data at first from the beginning of tuna longliners unloading in Phuket until the year of 2012 and the data of tuna purse seiners unloading in Phuket during 2003 to 2012 are described in this paper. Besides the conclusion with the progression on improvement of the port sampling and monitoring currently in place, the encounter problems and recommendation are included.

### INTRODUCTION

Tuna fisheries in the Indian Ocean took off in 1973 when the French, Russian, Japanese and Taiwanese fleets commenced their longline, purse seine and pole-and-line fisheries. The Taiwanese, Chinese and Indonesian fleets have well developed longline fishing techniques in the Eastern Indian Ocean. Large size of tuna caught by longliners is high value thus height profitable, because its meat is suitable for premium sashimi which is high demand in the Japanese raw fish markets. The tuna longliners landed in Singapore, Malaysia and Indonesia until 1994, after then, tuna catch production were unloaded at the Phuket fishing port which has well-developed infrastructures such as the landing port, processing plant, as well as the facility of international airport. In addition, the tuna purse seiners landed in Phuket for supplying tuna canning factories industrial in Thailand.

### MATERIALS AND METHODS

For longliner landing survey were conducted monthly at the Phuket fishing port to collect data of tuna, tuna-like and by-catch species: e.g., landing catch (metric ton, mt), effort (number of trips), fishes were random to be measured the individual body weight (kg) and folk length (FL) pectoral-dorsal length (PDL) and pre-dorsal length (LD1) were conducted.

For purse seiners landing survey, the fishing master was interviewed and logbook was asked for to acquire the data of catch (metric ton, mt), effort (number of operating sets), fishing ground and etc. Port-sampling were conducted to measure the individual body weight, folk length (FL) and pre-dorsal length (LD1) (cm).

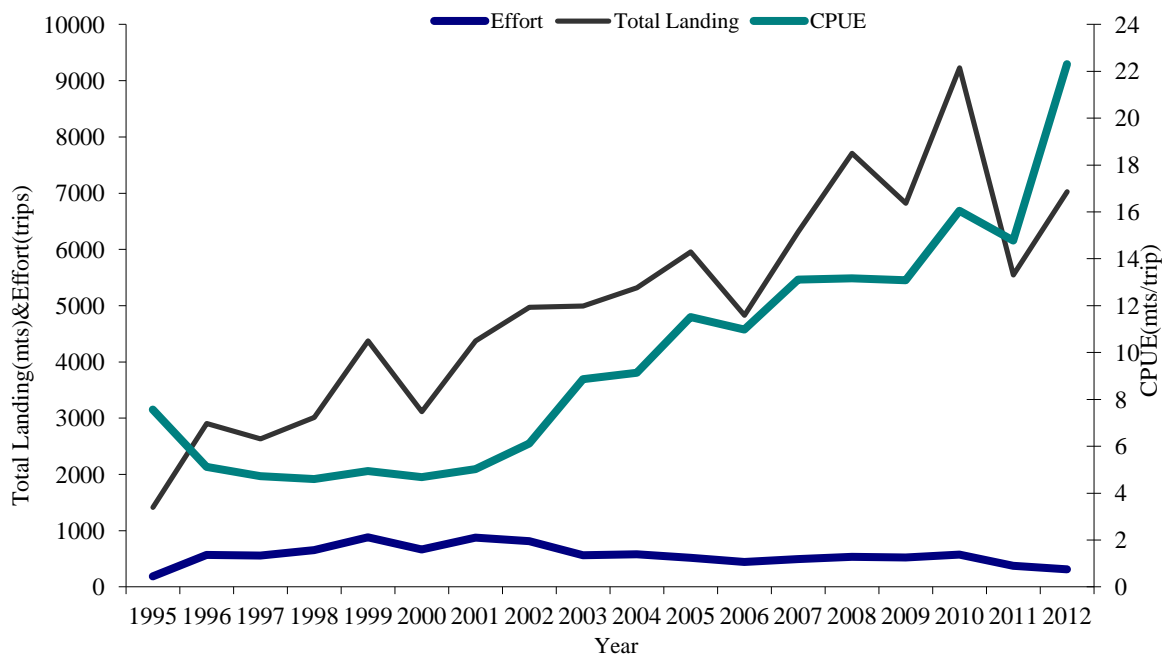
The unloaded quantity and value of fish from each vessel was verified with the data from customs office in Phuket.

## RESULT AND DISCUSSION

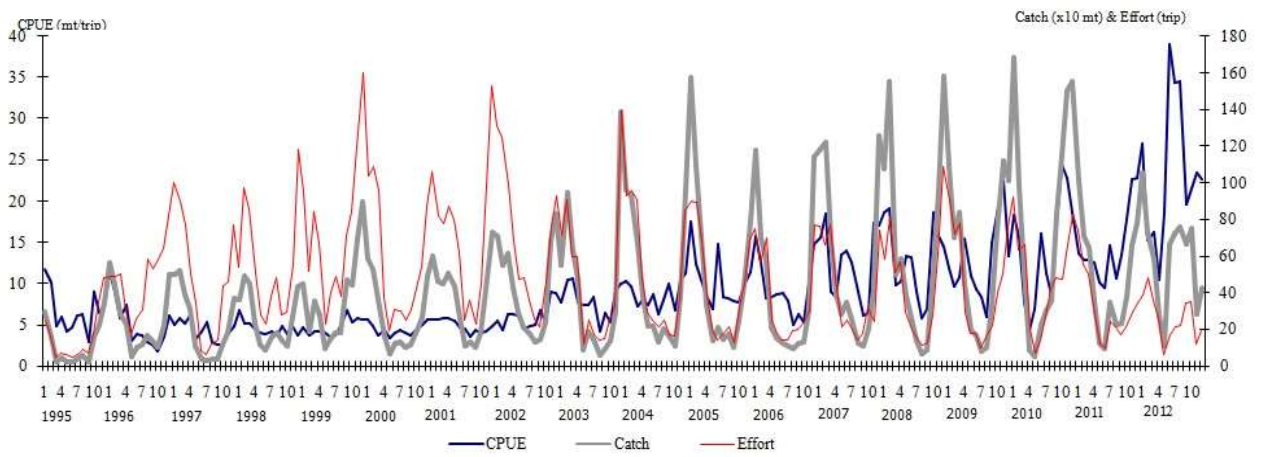
### 1. Fresh Tuna Longliners

The fishing effort increased steadily from 187 trips in 1995 to the peak of 883 trips in 1999, after then it fluctuated in narrow scope and continuously decreased into 315 trips in 2012. The whole figure of total landing catch during 1995 to 2012 showed the increasing trend (1,416 to 7,024 mts) although it showed some distinct decreased in between, which decreased from 4,373 mts in 1999 to 3,118 mts in 2000 and decreased from 5,953 in 2005 to 4,830 mts in 2006. The landing per trip decreased opposite with the total landing catch and the fishing effort during 1995 to 1996 (from 8 into 5 mts/trip) after then it's steady until 2001 and increased continuously into 13 mts in 2009 (Figure 1 and 2). Due to fuel crisis since July 2003 to 2012, the longliners reduced their cost by transshipment at sea with other contracting fishing vessel, for this reason the fishing vessel could stay and fish longer at sea.

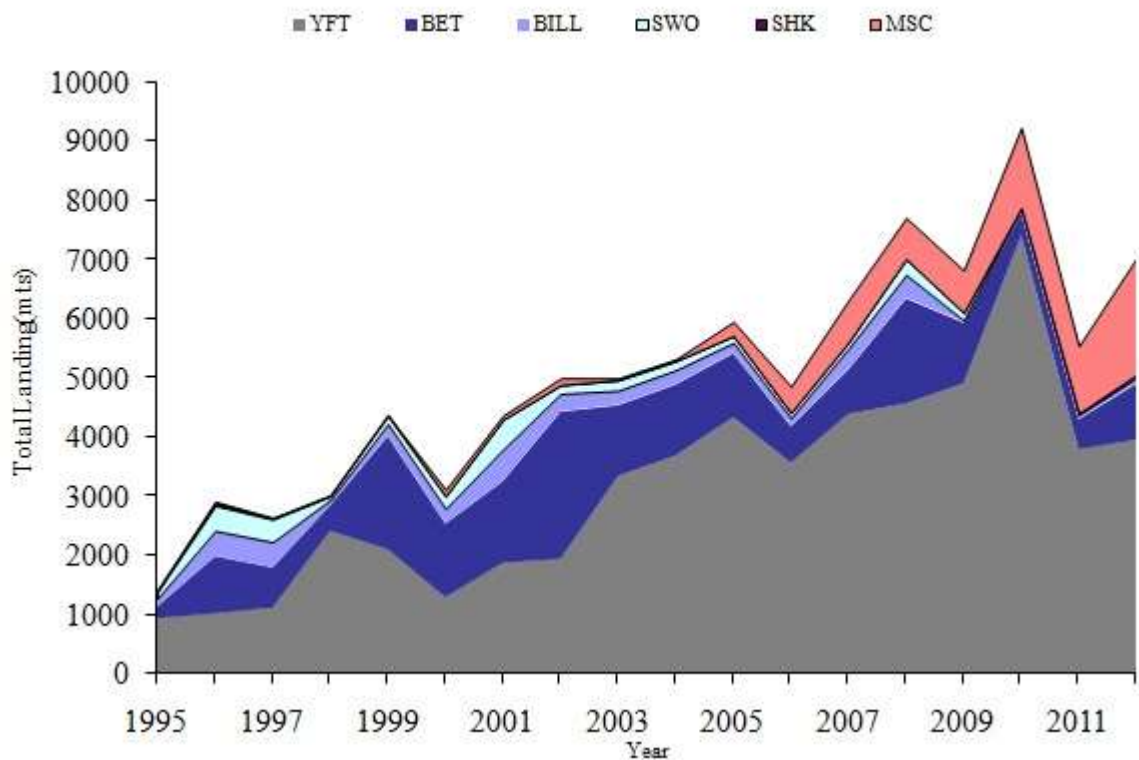
The main species composition were yellowfin tuna (YFT), bigeye tuna (BET), miscellaneous species (MSC) (Sharks, *Lepidocybium* spp., *Coryphaena* spp., *Thunnus alalunga*, *Molar* spp., *Rurethus pretiosus*, *Sphyraena* spp. and *Taractichtis* spp.) and bill fish (BILLs) (*Makaira* spp., *Tetrapturus* spp, *Istiophorus* spp.) with the average composition 63 21 9 and 4% of total landing respectively, while swordfish (SWO) contributed 3% of the total landing during 1995 to 2012. The total landing of yellowfin tuna, miscellaneous species, bigeye tuna and bill fish in 2012 were 3,976 1,970 943 and 88 mts, respectively (Figure 3). Taking in to account of the percentage of main target species, yellowfin tuna fluctuated during 1995 to 2002 with the peak of 80.8% of total landing in 1998, while the percentage of bigeye tuna fluctuated opposite with yellowfin tuna during 1995 to 2002 with the peak of 49.7% of total landing in 2002, after then, it continued downward trend to 11.8% of total landing in 2007, increased to 22.9% in 2008 and decreased lowest to 4% in 2010. It was to be remarked that the declaration of sharks were disappear since 2000 while the miscellaneous fish was declared as frozen mixed fish and indicated more significant. In 2011 and 2012 the frozen mixed fish accounted 20.5%, 28% of the total landing catch (Figure 4 and Table 1).



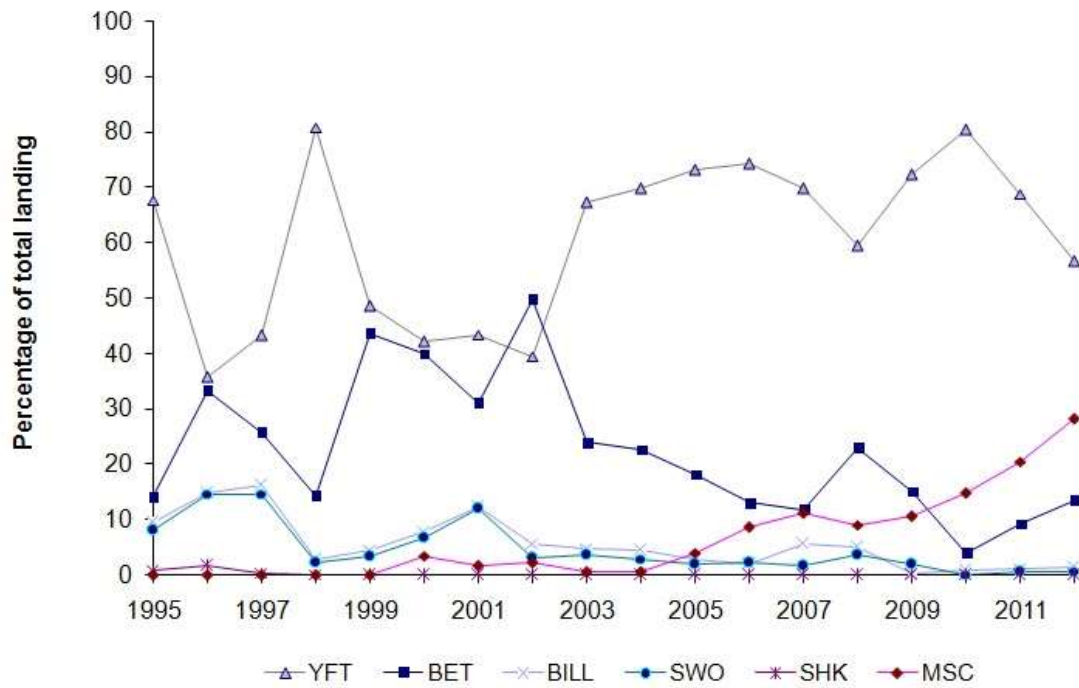
**Figure 1** Change of fishing effort, total landing catch (mts), and CPUE (mts/trip) of longliner from 1995 to 2012.



**Figure 2** Changes of CPUE (mts/trip), total landing catch (mts) and fishing effort (trip) of longline fleets from 1995 to 2012.



**Figure 3** Total landing catch from long liners categorized by species, during 1995 to 2012.



**Figure 4** Total landing catch from long liners categorized by main target species, during 1995 to 2012.

**Table 1** Fishing effort (no. of trip), catch (mt) and CPUE (mt/trip) by longliner landed at Phuket from 1995 to 2012

Year	Month	Effort	Total	YFT	BET	BILL	SWO	SHA	MSC	CPUE
1995	Jan	25	296	204	43	29	20	0	-	11.81
	Feb	16	161	133	2	13	13	0	-	10.07
	Mar	5	24	20	1	2	1	0	-	4.84
	Apr	7	41	33	3	3	2	0	-	5.88
	May	6	25	20	1	2	2	0	-	4.18
	Jun	5	23	17	3	1	2	0	-	4.71
	Jul	6	36	21	7	3	5	0	-	6.08
	Aug	9	57	38	5	8	6	0	-	6.29
	Sep	7	21	11	1	6	3	0	-	2.94
	Oct	18	161	136	14	6	5	0	-	8.95
	Nov	35	223	149	22	25	22	5	-	6.38
	Dec	48	348	176	98	35	31	8	-	7.24
	<b>Total</b>	<b>187</b>	<b>1,416</b>	<b>958</b>	<b>200</b>	<b>133</b>	<b>112</b>	<b>13</b>	-	<b>7.57</b>
1996	Jan	49	561	201	270	35	45	10	-	11.44
	Feb	49	439	161	172	39	50	17	-	8.96
	Mar	50	287	144	79	31	28	5	-	5.75
	Apr	30	221	65	102	26	22	6	-	7.35
	May	17	53	35	7	7	3	1	-	3.11
	Jun	26	103	55	22	8	18	0	-	3.92
	Jul	31	111	71	10	24	6	0	-	3.62
	Aug	58	167	87	44	28	8	0	-	2.89
	Sep	53	138	31	32	23	52	0	-	2.58
	Oct	58	100	41	12	17	20	10	-	1.72
	Nov	64	226	39	83	50	54	0	-	3.54
	Dec	82	497	108	132	138	119	0	-	6.06
	<b>Total</b>	<b>567</b>	<b>2,903</b>	<b>1,038</b>	<b>965</b>	<b>426</b>	<b>425</b>	<b>49</b>	-	<b>5.12</b>
1997	Jan	100	499	192	73	123	111	0	-	5
	Feb	90	522	202	143	91	86	0	-	5.8
	Mar	77	394	135	119	77	63	0	-	5.11
	Apr	50	309	88	91	66	64	0	-	6.17
	May	34	110	59	42	3	6	0	-	3.24
	Jun	8	34	21	11	2	0	0	-	4.17
	Jul	6	32	20	6	4	2	0	-	5.37
	Aug	12	35	21	11	3	0	0	-	2.96
	Sep	14	37	14	18	2	3	0	-	2.58
	Oct	44	114	76	15	14	8	1	-	2.59
	Nov	46	179	129	25	9	16	0	-	3.91
	Dec	77	367	181	122	31	24	9	-	4.77
	<b>Total</b>	<b>558</b>	<b>2,632</b>	<b>1,138</b>	<b>676</b>	<b>425</b>	<b>383</b>	<b>10</b>	-	<b>4.72</b>

Table 1 Cont.

Year	Month	Effort	Total	YFT	BET	BILL	SWO	SHA	MSC	CPUE
1998	Jan	54	362	231	118	9	3	1	-	6.7
	Feb	97	492	271	194	21	6	0	-	5.07
	Mar	86	445	408	22	11	4	0	-	5.17
	Apr	51	232	195	28	6	3	0	-	4.54
	May	28	113	103	8	1	1	0	-	4.01
	Jun	23	90	86	3	0	1	0	-	3.92
	Jul	38	156	148	8	0	0	0	-	4.14
	Aug	48	177	163	11	2	1	0	-	3.69
	Sep	28	137	110	5	8	14	0	-	4.87
	Oct	29	109	82	2	7	18	0	-	3.8
	Nov	55	269	238	10	14	7	0	-	4.89
	Dec	118	433	400	23	5	5	0	-	3.67
	<b>Total</b>	<b>655</b>	<b>3,015</b>	<b>2,435</b>	<b>432</b>	<b>84</b>	<b>63</b>	<b>1</b>	-	<b>4.6</b>
1999	Jan	95	450	265	182	1	2	0	-	4.73
	Feb	52	190	125	56	4	4	1	-	3.64
	Mar	84	356	262	94	0	0	0	-	4.25
	Apr	67	275	200	75	0	0	0	-	4.12
	May	23	93	51	35	7	0	0	-	4.08
	Jun	40	141	43	91	5	2	0	-	3.49
	Jul	49	179	18	155	0	6	0	-	3.65
	Aug	38	183	48	119	16	0	0	-	4.82
	Sep	71	473	282	145	26	20	0	-	6.67
	Oct	84	441	174	196	36	35	0	-	5.26
	Nov	120	695	231	369	54	41	0	-	5.79
	Dec	160	897	425	391	51	30	0	-	5.6
	<b>Total</b>	<b>883</b>	<b>4,373</b>	<b>2,124</b>	<b>1,908</b>	<b>200</b>	<b>140</b>	<b>1</b>	-	<b>4.95</b>
2000	Jan	104	583	176	360	29	18	-	0	5.61
	Feb	109	531	230	257	27	17	-	0	4.87
	Mar	96	358	97	244	8	8	-	1	3.73
	Apr	37	162	67	70	14	8	-	3	4.38
	May	19	65	18	31	7	4	-	5	3.42
	Jun	31	123	33	43	24	17	-	6	3.97
	Jul	30	128	44	34	15	20	-	15	4.27
	Aug	25	101	44	32	7	8	-	10	4.04
	Sep	31	113	49	27	11	18	-	8	3.65
	Oct	42	192	121	26	17	26	-	2	4.57
	Nov	54	271	128	52	34	29	-	28	5.02
	Dec	87	491	303	68	54	36	-	30	5.64
	<b>Total</b>	<b>665</b>	<b>3,118</b>	<b>1,310</b>	<b>1,244</b>	<b>247</b>	<b>209</b>	-	<b>108</b>	<b>5</b>

**Table 1 Cont.**

Year	Month	Effort	Total	YFT	BET	BILL	SWO	SHA	MSC	CPUE
2001	Jan	106	602	310	83	82	104	-	23	5.68
	Feb	82	461	243	119	37	61	-	1	5.62
	Mar	78	446	200	129	51	64	-	2	5.72
	Apr	87	503	190	152	74	81	-	6	5.78
	May	80	431	159	148	70	44	-	10	5.39
	Jun	62	262	85	131	26	14	-	6	4.23
	Jul	25	111	42	56	3	6	-	4	4.44
	Aug	36	130	60	45	16	9	-	0	3.61
	Sep	23	100	38	23	11	26	-	2	4.35
	Oct	45	178	53	82	24	12	-	7	3.96
	Nov	99	420	214	127	58	17	-	4	4.24
	Dec	153	728	301	283	79	62	-	3	4.76
	<b>Total</b>	<b>876</b>	<b>4,372</b>	<b>1,895</b>	<b>1,378</b>	<b>531</b>	<b>500</b>	<b>0</b>	<b>68</b>	<b>4.99</b>
2002	Jan	131	710	219	413	39	18	-	21	5.42
	Feb	125	546	244	266	22	14	-	0	4.37
	Mar	99	616	256	318	27	14	-	1	6.22
	Apr	68	423	195	209	12	6	-	1	6.22
	May	47	290	132	139	14	4	-	1	6.17
	Jun	48	214	67	127	17	3	-	0	4.46
	Jul	36	173	31	112	15	7	-	8	4.81
	Aug	26	130	39	64	15	11	-	1	5.00
	Sep	21	143	31	75	9	9	-	19	6.81
	Oct	46	231	67	134	9	8	-	13	5.02
	Nov	76	682	294	282	46	19	-	41	8.97
	Dec	93	813	385	336	56	32	-	4	8.74
	<b>Total</b>	<b>816</b>	<b>4,971</b>	<b>1,960</b>	<b>2,475</b>	<b>281</b>	<b>145</b>	<b>-</b>	<b>110</b>	<b>6.09</b>
2003	Jan	71	550	326	177	28	18	-	1	7.75
	Feb	91	949	674	197	31	29	-	18	10.43
	Mar	60	638	468	109	34	27	-	0	10.63
	Apr	60	467	309	141	7	10	-	0	7.78
	May	12	88	40	40	4	4	-	0	7.33
	Jun	25	185	89	82	9	6	-	0	7.40
	Jul	17	143	55	63	11	6	-	8	8.41
	Aug	14	58	20	31	4	3	-	0	4.14
	Sep	15	96	60	23	8	5	-	0	6.40
	Oct	26	139	52	62	22	3	-	0	5.35
	Nov	32	293	214	32	29	18	-	0	9.16
	Dec	140	1,389	1,053	237	53	46	-	0	9.92
	<b>Total</b>	<b>563</b>	<b>4,995</b>	<b>3,360</b>	<b>1,194</b>	<b>240</b>	<b>175</b>	<b>-</b>	<b>27</b>	<b>8.87</b>

Table 1 Cont.

Year	Month	Effort	Total	YFT	BET	BILL	SWO	SHA	MSC	CPUE
2004	Jan	93	961	746	150	34	31	-	0	10.33
	Feb	96	929	630	220	39	40	-	0	9.68
	Mar	91	663	473	127	27	36	-	0	7.29
	Apr	47	376	275	70	23	8	-	0	8.00
	May	29	216	154	52	8	2	-	0	7.45
	Jun	25	215	130	57	24	4	-	0	8.60
	Jul	21	133	90	36	4	3	-	0	6.33
	Aug	25	202	110	73	14	5	-	0	8.08
	Sep	17	168	99	58	10	1	-	0	9.88
	Oct	16	108	84	13	9	2	-	0	6.75
	Nov	37	384	246	90	12	12	-	24	10.38
	Dec	85	962	671	251	31	9	-	0	11.32
<b>Total</b>		<b>582</b>	<b>5,317</b>	<b>3,708</b>	<b>1,197</b>	<b>235</b>	<b>153</b>	-	<b>24</b>	<b>9.14</b>
2005	Jan	90	1578	1110	375	53	40	-	0	17.53
	Feb	89	1094	812	235	21	26	-	0	12.29
	Mar	68	706	543	105	10	2	-	46	10.38
	Apr	39	330	256	59	12	3	-	0	8.46
	May	20	139	96	28	12	2	-	1	6.95
	Jun	14	207	139	63	5	0	-	0	14.79
	Jul	17	143	74	35	4	0	-	30	8.41
	Aug	21	171	79	34	16	18	-	24	8.14
	Sep	13	103	76	22	4	1	-	0	7.92
	Oct	32	249	189	14	6	5	-	35	7.78
	Nov	45	444	358	22	10	5	-	49	9.87
	Dec	69	789	622	85	18	11	-	53	11.43
<b>Total</b>		<b>517</b>	<b>5,953</b>	<b>4,354</b>	<b>1,077</b>	<b>171</b>	<b>113</b>	-	<b>238</b>	<b>11.51</b>
2006	Jan	75	1177	916	106	14	4	-	137	15.69
	Feb	56	704	499	130	11	8	-	56	12.57
	Mar	70	573	443	86	15	6	-	23	8.19
	Apr	25	210	136	33	7	5	-	29	8.40
	May	18	155	80	33	2	1	-	39	8.61
	Jun	14	124	63	17	2	2	-	40	8.86
	Jul	14	111	55	10	15	3	-	28	7.93
	Aug	19	95	60	12	13	10	-	0	5.00
	Sep	20	124	58	7	2	5	-	52	6.20
	Oct	24	128	97	13	7	11	-	0	5.33
	Nov	30	305	244	32	16	13	-	0	10.17
	Dec	77	1124	933	136	29	19	-	7	14.60
<b>Total</b>		<b>442</b>	<b>4,830</b>	<b>3,584</b>	<b>615</b>	<b>133</b>	<b>87</b>	-	<b>411</b>	<b>10.93</b>



Table 1 Cont.

Year	Month	Effort	Total	YFT	BET	BILL	SWO	SHA	MSC	CPUE
2007	Jan	76	1183	982	107	29	2	-	63	15.57
	Feb	66	1067	840	64	65	24	-	74	16.17
	Mar	77	695	531	72	24	10	-	58	9.03
	Apr	47	390	296	46	24	6	-	18	8.30
	May	21	282	195	29	32	9	-	17	13.43
	Jun	25	350	218	20	17	23	-	72	14.00
	Jul	20	252	132	66	3	1	-	50	12.60
	Aug	14	126	55	6	6	9	-	50	9.00
	Sep	18	109	69	11	6	1	-	22	6.06
	Oct	32	204	148	17	13	2	-	24	6.38
	Nov	24	417	223	34	40	8	-	112	17.38
	Dec	74	1240	721	276	87	10	-	146	16.76
	<b>Total</b>	<b>494</b>	<b>6,315</b>	<b>4,410</b>	<b>748</b>	<b>346</b>	<b>105</b>	<b>-</b>	<b>706</b>	<b>12.78</b>
2008	Jan	58	1,076	651	294	48	41	-	42	18.55
	Feb	81	1,551	792	606	28	22	-	103	19.15
	Mar	51	499	204	185	6	30	-	74	9.78
	Apr	57	585	273	237	5	5	-	65	10.26
	May	29	385	183	92	8	7	-	95	13.28
	Jun	20	262	162	4	30	11	-	55	13.10
	Jul	15	136	83	10	26	13	-	4	9.07
	Aug	11	63	39	0	4	4	-	16	5.73
	Sep	13	89	55	1	6	3	-	24	6.85
	Oct	28	521	398	3	21	26	-	73	18.61
	Nov	61	963	714	74	51	38	-	86	15.79
	Dec	109	1,580	1033	266	154	68	-	59	14.50
	<b>Total</b>	<b>533</b>	<b>7,710</b>	<b>4,587</b>	<b>1,772</b>	<b>387</b>	<b>268</b>	<b>0</b>	<b>696</b>	<b>14.47</b>
2009	Jan	91	1,088	766	211	12	51	-	48	11.96
	Feb	72	699	571	117	1	1	-	9	9.71
	Mar	78	836	454	325	3	13	-	41	10.72
	Apr	29	445	268	100	1	27	-	49	15.34
	May	18	197	123	58	-	-	-	16	10.94
	Jun	18	169	72	13	5	8	-	71	9.39
	Jul	10	83	67	-	1	-	-	15	8.30
	Aug	17	100	41	3	-	1	-	55	5.88
	Sep	22	327	218	27	-	-	-	82	14.86
	Oct	40	738	568	94	3	-	-	73	18.45
	Nov	50	1,124	942	16	-	25	-	141	22.48
	Dec	76	1,015	836	61	1	3	-	114	13.36
	<b>Total</b>	<b>521</b>	<b>6,821</b>	<b>4,926</b>	<b>1,025</b>	<b>27</b>	<b>129</b>	<b>0</b>	<b>714</b>	<b>13.09</b>

**Table 1 Cont.**

Year	Month	Effort	Total	YFT	BET	BILL	SWO	SHA	MSC	CPUE
2010	Jan	92	1,682	1,381	52	2	2	-	245	18.28
	Feb	63	985	818	33	-	1	-	133	15.63
	Mar	66	509	376	71	1	-	-	61	7.71
	Apr	20	87	52	20	-	-	-	15	4.35
	May	7	48	16	5	-	-	-	27	6.86
	Jun	14	225	139	28	-	-	-	58	16.07
	Jul	27	302	151	15	3	-	-	133	11.19
	Aug	42	356	165	68	3	1	-	119	8.48
	Sep	48	831	533	33	15	-	-	250	17.31
	Oct	47	1,151	1,066	21	23	-	-	41	24.49
	Nov	66	1,503	1,374	2	17	-	-	110	22.77
	Dec	83	1,551	1,354	23	12	-	-	162	18.69
	<b>Total</b>	<b>575</b>	<b>9,230</b>	<b>7,425</b>	<b>371</b>	<b>76</b>	<b>4</b>	<b>0</b>	<b>1,354</b>	<b>16.05</b>
2011	Jan	74	1,012	763	100	4	-	-	145	13.68
	Feb	55	708	511	119	6	1	-	71	12.87
	Mar	50	646	431	120	18	1	-	76	12.92
	Apr	28	352	164	75	-	1	-	112	12.57
	May	12	122	80	20	2	-	-	20	10.17
	Jun	10	94	68	4	-	10	-	12	9.40
	Jul	24	349	127	13	8	-	-	201	14.54
	Aug	21	221	98	30	-	-	-	93	10.52
	Sep	17	230	86	3	6	9	-	126	13.53
	Oct	21	373	316	9	2	3	-	43	17.76
	Nov	29	658	551	1	7	-	-	99	22.69
	Dec	34	778	615	13	13	-	-	137	22.88
	<b>Total</b>	<b>375</b>	<b>5,543</b>	<b>3,810</b>	<b>507</b>	<b>66</b>	<b>25</b>	<b>0</b>	<b>1,135</b>	<b>14.78</b>

**Table 1 Cont.**

Year	Month	Effort	Total	YFT	BET	BILL	SWO	SHA	MSC	CPUE
2012	Jan	39	1,054	891	42	3	-	-	118	27.03
	Feb	48	731	472	99	22	-	-	138	15.23
	Mar	36	582	228	170	13	-	-	171	16.17
	Apr	26	272	78	58	3	-	-	133	10.46
	May	6	112	23	23	1	-	-	65	18.67
	Jun	17	664	451	131	-	-	-	82	39.06
	Jul	21	721	526	98	2	-	-	95	34.33
	Aug	22	759	326	7	-	-	-	426	34.50
	Sep	34	667	241	54	4	4	-	364	19.62
	Oct	35	751	365	98	1	17	-	270	21.46
	Nov	12	281	146	58	2	3	-	72	23.42
	Dec	19	430	229	105	37	23	-	36	22.63
	<b>Total</b>	<b>315</b>	<b>7,024</b>	<b>3,976</b>	<b>943</b>	<b>88</b>	<b>47</b>	<b>0</b>	<b>1,970</b>	<b>22.30</b>

Table 2 presented total landing and effort statistics by each vessel nationality (Taiwanese, Chinese, Indonesian, Thai, Vanuatu, Malaysian Belizean and Indian) during January in 2000 to December in 2012. The main fishing fleet still was Taiwanese followed by Indonesian. In January to November of 2003, there was no landing of Chinese longliner because some of the fleet resigned the contract and moved back to their own country and some of the remainder vessels were repaired at the dock in Phuket then shifted to operate in the Oman water. Although the Chinese longliners came back to landing in Phuket again in 2004, after that year there were few and far between of landing. In 2007, the Thai longliner landed for five trips and there was one trip of landing from Vanuatu vessel, In 2008, 2009 the Malaysian longliner was landed one trips per years and 9 trips in 2011. The Belizean was landed 65, 63 and 26 trips in 2010, 2011 and 2012 respectively and 2 trips of the Indian longliner was landed in 2011. Average of landing catch of Taiwanese longliner showed higher than Chinese longliner while average of landing catch of Indonesian longliner was the highest variation (1 to 39.28 mts/trip). Cause of high landing catch of Taiwanese and Indonesian longliners longer of the fishing day, 25 - 35 days and 20 - 25 days, respectively, and the fishing was operated all hours a day while Chinese longliner 's fishing days was approximately 10-20 days and operated either day or night-time.

Figure 5 showed pie graphs of species composition during 2000-2012 from each vessel nationality which yellowfin tuna and bigeye were the main composition. In 2012, the main composition was yellowfin tuna followed by miscellaneous species and bigeye tuna, respectively. As it was mentioned previously, the unidentified miscellaneous species were significant increasing, 39% from Taiwanese, 19% from Indonesian, and 9% from Belizean were unloaded.

**Table 2** Fishing effort (no.of trip), catch (mt) and CPUE (mt/trip) by Taiwanese longliners landed at Phuket Province during January 2000 to December 2012.

<b>Taiwanese</b>									
Year	Month	effort	Total	BET	YFT	MAR	SWO	MSC	CPUE
2000	Jan	84	484	299	146	24	15	0	5.76
	Feb	86	431	209	187	21	14	0	5.01
	Mar	64	248	167	67	6	7	1	3.88
	Apr	16	84	36	35	8	4	1	5.25
	May	8	29	12	8	5	2	2	3.63
	Jun	15	70	23	23	15	9	0	4.67
	Jul	16	79	21	29	9	11	9	4.94
	Aug	8	41	13	18	3	3	4	5.13
	Sep	12	53	12	22	6	9	4	4.42
	Oct	20	108	11	84	1	11	1	5.40
	Nov	39	223	37	105	30	27	24	5.72
	Dec	71	435	60	277	39	32	27	6.13
	<b>Total</b>	<b>439</b>	<b>2,285</b>	<b>900</b>	<b>1,001</b>	<b>167</b>	<b>144</b>	<b>73</b>	<b>5.21</b>
2001	Jan	81	474	64	240	66	86	18	5.85
	Feb	64	352	99	177	27	49	0	5.50
	Mar	45	264	77	118	31	37	1	5.87
	Apr	51	354	86	137	54	74	3	6.94
	May	37	226	74	101	32	17	2	6.11
	Jun	34	168	83	59	13	9	4	4.94
	Jul	7	63	29	30	1	1	2	9.00
	Aug	15	76	26	39	7	4	0	5.07
	Sep	15	82	18	29	9	24	2	5.47
	Oct	23	118	58	35	14	7	4	5.13
	Nov	66	310	88	171	37	12	2	4.70
	Dec	111	553	200	248	56	46	3	4.98
	<b>Total</b>	<b>549</b>	<b>3,040</b>	<b>902</b>	<b>1,384</b>	<b>347</b>	<b>366</b>	<b>41</b>	<b>5.54</b>
2002	Jan	98	541	311	171	30	13	16	5.52
	Feb	97	437	197	210	18	12	0	4.51
	Mar	60	440	213	198	19	9	1	7.33
	Apr	36	243	114	119	6	3	1	6.75
	May	26	191	83	93	11	3	1	7.35
	Jun	24	140	82	46	11	1	0	5.83
	Jul	20	109	67	22	12	6	2	5.45
	Aug	18	90	45	28	10	6	1	5.00
	Sep	15	116	61	26	7	6	16	7.73
	Oct	20	134	73	42	6	5	8	6.70
	Nov	64	584	237	257	39	16	35	9.13
	Dec	78	740	294	359	56	27	4	9.49
	<b>Total</b>	<b>556</b>	<b>3,765</b>	<b>1,777</b>	<b>1,571</b>	<b>225</b>	<b>107</b>	<b>85</b>	<b>6.77</b>
2003	Jan	68	522	168	309	27	17	1	7.68

	Feb	88	923	190	656	30	29	18	10.49
	Mar	58	609	105	445	33	26	0	10.50
	Apr	53	390	123	253	6	8	0	7.36
	May	9	65	30	29	3	3	0	7.22
	Jun	24	184	81	88	9	6	0	7.67
	Jul	15	137	60	52	11	6	8	9.13
	Aug	12	51	29	15	4	3	0	4.25
	Sep	12	88	20	56	7	5	0	7.33
	Oct	19	117	52	42	20	3	0	6.16
	Nov	23	215	23	155	22	15	0	9.35
	Dec	115	1,098	187	838	39	34	0	9.55
	<b>Total</b>	<b>496</b>	<b>4,399</b>	<b>1,068</b>	<b>2,938</b>	<b>211</b>	<b>155</b>	<b>27</b>	<b>8.87</b>
2004	Jan	70	726	119	556	27	24	0	10.37
	Feb	80	726	146	518	30	32	0	9.08
	Mar	75	517	88	379	22	28	0	6.89
	Apr	29	220	53	153	12	2	0	7.59
	May	22	155	49	99	6	1	0	7.05
	Jun	17	155	39	103	12	1	0	9.12
	Jul	14	104	24	77	2	1	0	7.43
	Aug	25	202	73	110	14	5	0	8.08
	Sep	15	119	33	77	8	1	0	7.93
	Oct	14	104	12	81	9	2	0	7.43
	Nov	29	287	73	169	11	10	24	9.90
	Dec	73	716	202	479	27	8	0	9.81
	<b>Total</b>	<b>463</b>	<b>4,031</b>	<b>911</b>	<b>2,801</b>	<b>180</b>	<b>115</b>	<b>24</b>	<b>8.71</b>
2005	Jan	80	1,272	298	883	51	40	0	15.90
	Feb	80	930	194	691	20	25	0	11.63
	Mar	62	602	96	449	9	2	46	9.71
	Apr	31	285	50	223	10	2	0	9.19
	May	16	128	22	91	12	2	1	8.00
	Jun	13	199	61	133	5	0	0	15.31
	Jul	15	132	33	66	3	0	30	8.80
	Aug	20	169	34	77	16	18	24	8.45
	Sep	10	87	19	64	3	1	0	8.70
	Oct	26	216	7	164	5	5	35	8.31
	Nov	34	363	8	301	5	5	44	10.68
	Dec	57	677	54	546	15	9	53	11.88
	<b>Total</b>	<b>444</b>	<b>5,060</b>	<b>876</b>	<b>3,688</b>	<b>154</b>	<b>109</b>	<b>233</b>	<b>11.40</b>
2006	Jan	47	779	45	631	8	3	92	16.57
	Feb	33	449	69	324	7	5	44	13.61
	Mar	58	515	73	399	14	6	23	8.88
	Apr	16	134	17	81	4	3	29	8.38
	May	11	100	11	63	1	1	24	9.09
	Jun	9	101	12	51	2	1	35	11.22
	Jul	8	88	10	41	11	2	24	11.00
	Aug	15	75	7	47	11	10	0	5.00

	Sep	15	102	5	40	1	4	52	6.80
	Oct	20	102	5	83	5	9	0	5.10
	Nov	26	216	13	176	15	12	0	8.31
	Dec	57	560	46	478	21	8	7	9.82
	<b>Total</b>	<b>315</b>	<b>3,221</b>	<b>313</b>	<b>2,414</b>	<b>100</b>	<b>64</b>	<b>330</b>	<b>10.23</b>
2007	Jan	64	820	56	670	29	2	63	12.81
	Feb	59	890	50	690	56	20	74	15.08
	Mar	70	621	54	481	22	9	55	8.87
	Apr	42	331	38	251	21	5	16	7.88
	May	15	170	14	117	21	6	12	11.33
	Jun	19	241	14	139	11	22	55	12.68
	Jul	19	223	56	113	3	1	50	11.74
	Aug	13	123	6	55	6	9	47	9.46
	Sep	15	96	9	61	5	1	20	6.40
	Oct	26	158	10	113	11	2	22	6.08
	Nov	17	318	13	170	30	5	100	18.71
	Dec	68	1,137	248	660	79	9	141	16.72
	<b>Total</b>	<b>427</b>	<b>5,128</b>	<b>568</b>	<b>3,520</b>	<b>294</b>	<b>91</b>	<b>655</b>	<b>12.01</b>
2008	Jan	50	764	158	508	35	29	34	15.28
	Feb	69	1,159	391	629	20	18	101	16.80
	Mar	49	477	173	197	6	30	71	9.73
	Apr	55	542	215	255	5	4	63	9.85
	May	25	266	42	130	5	4	85	10.64
	Jun	10	139	2	76	13	5	43	13.90
	Jul	10	77	10	43	15	5	4	7.70
	Aug	7	36	0	17	1	2	16	5.14
	Sep	8	48	1	21	4	2	20	6.00
	Oct	20	288	3	213	10	14	48	14.40
	Nov	51	642	40	479	37	26	60	12.59
	Dec	92	1,124	153	767	111	50	43	12.22
	<b>Total</b>	<b>446</b>	<b>5,562</b>	<b>1,188</b>	<b>3,335</b>	<b>262</b>	<b>189</b>	<b>588</b>	<b>12.47</b>
2009	Jan	70	651	48	510	3	50	40	9.30
	Feb	58	509	86	415	0	0	8	8.78
	Mar	64	552	183	316	1	11	41	8.63
	Apr	22	279	36	168	0	26	49	12.68
	May	11	116	35	69	0	0	12	10.55
	Jun	13	107	13	28	5	8	53	8.23
	Jul	6	42	0	27	0	0	15	7.00
	Aug	12	59	0	4	0	0	55	4.92
	Sep	13	140	2	77	0	0	61	10.77
	Oct	22	232	47	131	3	0	51	10.55
	Nov	31	377	13	271	0	0	93	12.16
	Dec	61	729	44	586	1	1	97	11.95
	<b>Total</b>	<b>383</b>	<b>3,793</b>	<b>507</b>	<b>2,602</b>	<b>13</b>	<b>96</b>	<b>575</b>	<b>9.90</b>
2010	Jan	72	984	27	792	0	1	164	13.67
	Feb	51	657	20	560	0	1	76	12.88

	Mar	57	411	29	326	0	0	56	7.21
	Apr	15	47	8	29	0	0	10	3.13
	May	5	29	0	3	0	0	26	5.80
	Jun	9	122	21	44	0	0	57	13.56
	Jul	20	220	3	86	0	0	131	11.00
	Aug	34	220	25	104	3	1	87	6.47
	Sep	35	449	31	179	11	0	228	12.83
	Oct	31	517	21	461	16	0	19	16.68
	Nov	42	731	2	658	8	0	63	17.40
	Dec	54	751	9	619	2	0	121	13.91
	<b>Total</b>	<b>425</b>	<b>5,138</b>	<b>196</b>	<b>3,861</b>	<b>40</b>	<b>3</b>	<b>1,038</b>	<b>12.09</b>
2011	Jan	51	559	62	374	2	0	121	10.96
	Feb	42	453	67	331	6	1	48	10.79
	Mar	35	422	42	307	16	0	57	12.06
	Apr	16	182	19	68	0	0	95	11.38
	May	8	57	12	37	2	0	6	7.13
	Jun	3	8	3	5	0	0	0	2.67
	Jul	16	204	12	36	8	0	148	12.75
	Aug	13	128	22	20	0	0	86	9.85
	Sep	12	137	3	28	6	0	100	11.42
	Oct	10	95	8	75	2	3	7	9.50
	Nov	16	293	1	208	6	0	78	18.31
	Dec	19	290	1	217	2	0	70	15.26
	<b>Total</b>	<b>241</b>	<b>2,828</b>	<b>252</b>	<b>1,706</b>	<b>50</b>	<b>4</b>	<b>816</b>	<b>11.73</b>
2012	Jan	24	497	0	409	1	0	87	20.71
	Feb	36	437	42	289	13	0	93	12.14
	Mar	26	301	17	137	9	0	138	11.58
	Apr	11	91	0	32	0	0	59	8.27
	May	2	40	0	0	0	0	40	20.00
	Jun	5	98	0	75	0	0	23	19.60
	Jul	7	174	4	125	2	0	43	24.86
	Aug	18	654	2	276	0	0	376	36.33
	Sep	25	459	25	174	4	4	252	18.36
	Oct	25	516	55	231	1	17	212	20.64
	Nov	6	132	15	85	2	0	30	22.00
	Dec	9	110	12	54	12	10	22	12.22
	<b>Total</b>	<b>194</b>	<b>3,509</b>	<b>172</b>	<b>1,887</b>	<b>44</b>	<b>31</b>	<b>1,375</b>	<b>18.09</b>

**Table 3** Fishing effort (no.of trip), catch (mt) and CPUE (mt/trip) by Chinese longliners landed at Phuket Province during 2000 to 2008.

<b>Chaineese</b>									
Year	Month	Effort	Total	BE	YF	MAR	SWO	MSC	CPUE
2000	Jan	20	99	61	30	5	3	0	4.95
	Feb	23	100	48	43	6	3	0	4.35
	Mar	31	105	73	29	2	1	0	3.39
	Apr	14	63	30	23	5	3	2	4.50
	May	10	28	15	9	1	1	2	2.80
	Jun	15	51	19	9	9	8	6	3.40
	Jul	11	38	10	11	5	7	5	3.45
	Aug	15	51	16	22	4	4	5	3.40
	Sep	17	56	14	25	5	8	4	3.29
	Oct	20	74	14	31	15	13	1	3.70
	Nov	13	36	14	15	3	1	3	2.77
	Dec	10	37	4	16	14	1	2	3.70
<b>Total</b>		<b>199</b>	<b>738</b>	<b>318</b>	<b>263</b>	<b>74</b>	<b>53</b>	<b>30</b>	<b>3.71</b>
2001	Jan	13	41	6	19	6	8	2	3.15
	Feb	10	43	9	18	8	8	0	4.30
	Mar	20	91	36	35	8	11	1	4.55
	Apr	31	111	57	32	16	4	2	3.58
	May	42	203	73	57	38	27	8	4.83
	Jun	25	84	44	22	12	4	2	3.36
	Jul	16	40	23	9	2	4	2	2.50
	Aug	19	48	17	18	8	5	0	2.53
	Sep	5	12	3	6	1	2	0	2.40
	Oct	17	50	20	14	8	5	3	2.94
	Nov	31	104	38	40	19	5	2	3.35
	Dec	29	91	45	27	10	9	0	3.14
<b>Total</b>		<b>258</b>	<b>918</b>	<b>371</b>	<b>297</b>	<b>136</b>	<b>92</b>	<b>22</b>	<b>3.56</b>
2002	Jan	22	71	47	17	3	2	2	3.23
	Feb	21	82	59	18	3	2	0	3.90
	Mar	32	129	83	36	6	4	0	4.03
	Apr	27	106	62	38	4	2	0	3.93
	May	19	87	53	30	3	1	0	4.58
	Jun	22	65	41	16	6	2	0	2.95
	Jul	15	62	44	8	3	1	6	4.13
	Aug	5	23	13	5	1	4	0	4.60
	Sep	4	20	11	3	2	2	2	5.00
	Oct	24	91	57	23	3	3	5	3.79
	Nov	7	27	15	7	2	1	2	3.86
	Dec	12	57	31	12	10	4	0	4.75
<b>Total</b>		<b>210</b>	<b>820</b>	<b>516</b>	<b>213</b>	<b>46</b>	<b>28</b>	<b>17</b>	<b>3.90</b>



Table 3 Cont.

<b>Chaineese</b>									
Year	Month	Effort	Total	BE	YF	MAR	SWO	MSC	CPUE
2003	Jan	0	0	0	0	0	0	0	0.00
	Feb	0	0	0	0	0	0	0	0.00
	Mar	0	0	0	0	0	0	0	0.00
	Apr	0	0	0	0	0	0	0	0.00
	May	0	0	0	0	0	0	0	0.00
	Jun	0	0	0	0	0	0	0	0.00
	Jul	0	0	0	0	0	0	0	0.00
	Aug	0	0	0	0	0	0	0	0.00
	Sep	0	0	0	0	0	0	0	0.00
	Oct	0	0	0	0	0	0	0	0.00
	Nov	0	0	0	0	0	0	0	0.00
	Dec	5	25	9	11	1	4	0	5.00
	<b>Total</b>	<b>5</b>	<b>25</b>	<b>9</b>	<b>11</b>	<b>1</b>	<b>4</b>	<b>0</b>	<b>5.00</b>
2004	Jan	9	68	13	50	2	3	0	7.56
	Feb	7	94	67	20	4	3	0	13.43
	Mar	7	48	20	23	2	3	0	6.86
	Apr	11	70	14	45	6	5	0	6.36
	May	1	19	0	17	1	1	0	19.00
	Jun	7	47	18	15	11	3	0	6.71
	Jul	5	11	5	2	2	2	0	2.20
	Aug	0	0	0	0	0	0	0	0.00
	Sep	1	46	25	19	2	0	0	46.00
	Oct	0	0	0	0	0	0	0	0.00
	Nov	0	0	0	0	0	0	0	0.00
	Dec	0	0	0	0	0	0	0	0.00
	<b>Total</b>	<b>48</b>	<b>403</b>	<b>162</b>	<b>191</b>	<b>30</b>	<b>20</b>	<b>0</b>	<b>8.40</b>
2005	Jan	0	0	0	0	0	0	0	0.00
	Feb	0	0	0	0	0	0	0	0.00
	Mar	2	4	3	1	0	0	0	2.00
	Apr	0	0	0	0	0	0	0	0.00
	May	0	0	0	0	0	0	0	0.00
	Jun	0	0	0	0	0	0	0	0.00
	Jul	0	0	0	0	0	0	0	0.00
	Aug	0	0	0	0	0	0	0	0.00
	Sep	0	0	0	0	0	0	0	0.00
	Oct	0	0	0	0	0	0	0	0.00
	Nov	0	0	0	0	0	0	0	0.00
	Dec	0	0	0	0	0	0	0	0.00
	<b>Total</b>	<b>2</b>	<b>4</b>	<b>3</b>	<b>1</b>	<b>0</b>	<b>0</b>	<b>0</b>	<b>2.00</b>

Table 3 Cont

<b>Chainese</b>									
Year	Month	Effort	Total	BE	YF	MAR	SWO	MSC	CPUE
2006	Jan	0	0	0	0	0	0	0	0.00
	Feb	0	0	0	0	0	0	0	0.00
	Mar	0	0	0	0	0	0	0	0.00
	Apr	0	0	0	0	0	0	0	0.00
	May	0	0	0	0	0	0	0	0.00
	Jun	0	0	0	0	0	0	0	0.00
	Jul	0	0	0	0	0	0	0	0.00
	Aug	0	0	0	0	0	0	0	0.00
	Sep	0	0	0	0	0	0	0	0.00
	Oct	0	0	0	0	0	0	0	0.00
	Nov	0	0	0	0	0	0	0	0.00
	Dec	0	0	0	0	0	0	0	0.00
	<b>Total</b>		<b>0</b>	<b>0</b>	<b>0</b>	<b>0</b>	<b>0</b>	<b>0</b>	<b>0</b>
2007	Jan	0	0	0	0	0	0	0	0.00
	Feb	0	0	0	0	0	0	0	0.00
	Mar	0	0	0	0	0	0	0	0.00
	Apr	1	5	0	5	0	0	0	5.00
	May	0	0	0	0	0	0	0	0.00
	Jun	0	0	0	0	0	0	0	0.00
	Jul	0	0	0	0	0	0	0	0.00
	Aug	0	0	0	0	0	0	0	0.00
	Sep	0	0	0	0	0	0	0	0.00
	Oct	0	0	0	0	0	0	0	0.00
	Nov	0	0	0	0	0	0	0	0.00
	Dec	0	0	0	0	0	0	0	0.00
	<b>Total</b>		<b>1</b>	<b>5</b>	<b>0</b>	<b>5</b>	<b>0</b>	<b>0</b>	<b>0</b>
2008	Jan	0	0	0	0	0	0	0	0.00
	Feb	0	0	0	0	0	0	0	0.00
	Mar	0	0	0	0	0	0	0	0.00
	Apr	0	0	0	0	0	0	0	0.00
	May	0	0	0	0	0	0	0	0.00
	Jun	1	1	0	1	0	0	0	<b>1.00</b>
	Jul	0	0	0	0	0	0	0	0.00
	Aug	0	0	0	0	0	0	0	0.00
	Sep	0	0	0	0	0	0	0	0.00
	Oct	0	0	0	0	0	0	0	0.00
	Nov	0	0	0	0	0	0	0	0.00
	Dec	0	0	0	0	0	0	0	0.00
	<b>Total</b>		<b>1</b>	<b>1</b>	<b>0</b>	<b>1</b>	<b>0</b>	<b>0</b>	<b>0</b>

**Table 4** Fishing effort (no.of trip), catch (mt) and CPUE (mt/trip) by Indonesian longliners landed at Phuket Province during January 2000 to December 2012.

<b>Indonesian</b>									
Year	Month	Effort	Total	BET	YFT	MAR	SWO	MSC	CPUE
2000	Jan	0	0	0	0	0	0	0	0.00
	Feb	0	0	0	0	0	0	0	0.00
	Mar	1	5	4	1	0	0	0	5.00
	Apr	7	15	4	9	1	1	0	2.14
	May	1	8	4	1	1	1	1	8.00
	Jun	1	2	1	1	0	0	0	2.00
	Jul	3	11	3	4	1	2	1	3.67
	Aug	2	9	3	4	0	1	1	4.50
	Sep	2	4	1	2	0	1	0	2.00
	Oct	2	10	1	6	1	2	0	5.00
	Nov	2	12	1	8	1	1	1	6.00
	Dec	6	19	4	10	1	3	1	3.17
	<b>Total</b>	<b>27</b>	<b>95</b>	<b>26</b>	<b>46</b>	<b>6</b>	<b>12</b>	<b>5</b>	<b>3.52</b>
2001	Jan	12	87	13	51	10	10	3	7.25
	Feb	8	66	11	48	2	4	1	8.25
	Mar	13	91	16	47	12	16	0	7.00
	Apr	5	38	9	21	4	3	1	7.60
	May	1	2	1	1	0	0	0	2.00
	Jun	3	10	4	4	1	1	0	3.33
	Jul	2	8	4	3	0	1	0	4.00
	Aug	2	6	2	3	1	0	0	3.00
	Sep	3	6	2	3	1	0	0	2.00
	Oct	5	10	4	4	2	0	0	2.00
	Nov	2	6	1	3	2	0	0	3.00
	Dec	13	84	38	26	13	7	0	6.46
	<b>Total</b>	<b>69</b>	<b>414</b>	<b>105</b>	<b>214</b>	<b>48</b>	<b>42</b>	<b>5</b>	<b>6.00</b>
2002	Jan	11	98	55	31	6	3	3	8.91
	Feb	7	27	10	16	1	0	0	3.86
	Mar	7	47	22	22	2	1	0	6.71
	Apr	5	74	33	38	2	1	0	14.80
	May	2	12	3	9	0	0	0	6.00
	Jun	2	9	4	5	0	0	0	4.50
	Jul	1	2	1	1	0	0	0	2.00
	Aug	3	17	6	6	4	1	0	5.67
	Sep	2	7	3	2	0	1	1	3.50
	Oct	2	6	4	2	0	0	0	3.00
	Nov	5	71	30	30	5	2	4	14.20
	Dec	3	31	11	14	5	1	0	10.33
	<b>Total</b>	<b>50</b>	<b>401</b>	<b>182</b>	<b>176</b>	<b>25</b>	<b>10</b>	<b>8</b>	<b>8.02</b>

Table 4 Cont

<b>Indonesian</b>									
Year	Month	Effort	Total	BET	YFT	MAR	SWO	MSC	CPUE
2003	Jan	3	28	9	17	1	1	0	9.33
	Feb	3	27	7	18	1	0	1	9.00
	Mar	2	29	4	23	1	1	0	14.50
	Apr	7	77	18	56	1	2	0	11.00
	May	3	23	10	11	1	1	0	7.67
	Jun	1	1	0.50	0.50	0	0	0	1.00
	Jul	2	6	3	3	0	0	0	3.00
	Aug	2	7	2	5	0	0	0	3.50
	Sep	3	8	3	4	1	0	0	2.67
	Oct	7	22	10	10	2	0	0	3.14
	Nov	9	78	9	59	7	3	0	8.67
	Dec	20	266	41	204	13	8	0	13.30
	<b>Total</b>	<b>62</b>	<b>571</b>	<b>116</b>	<b>410</b>	<b>28</b>	<b>16</b>	<b>1</b>	<b>9.21</b>
2004	Jan	14	167	18	140	5	4	0	11.93
	Feb	9	109	7	92	5	5	0	12.11
	Mar	9	98	19	71	3	5	0	10.89
	Apr	7	86	3	77	5	1	0	12.29
	May	6	42	3	38	1	0	0	7.00
	Jun	1	13	0	12	1	0	0	13.00
	Jul	2	18	7	11	0	0	0	9.00
	Aug	0	0	0	0	0	0	0	0.00
	Sep	1	3	0	3	0	0	0	3.00
	Oct	2	4	1	3	0	0	0	2.00
	Nov	8	97	17	77	1	2	0	12.13
	Dec	12	246	49	192	4	1	0	20.50
	<b>Total</b>	<b>71</b>	<b>883</b>	<b>124</b>	<b>716</b>	<b>25</b>	<b>18</b>	<b>0</b>	<b>12.44</b>
2005	Jan	10	306	77	227	2	0	0	30.60
	Feb	9	164	41	121	1	1	0	18.22
	Mar	6	104	9	94	1	0	0	17.33
	Apr	8	45	9	33	2	1	0	5.63
	May	2	7	3	4	0	0	0	3.50
	Jun	1	8	2	6	0	0	0	8.00
	Jul	2	11	2	8	1	0	0	5.50
	Aug	1	2	0	2	0	0	0	2.00
	Sep	3	16	3	12	1	0	0	5.33
	Oct	6	33	7	25	1	0	0	5.50
	Nov	11	81	14	57	5	0	5	7.36
	Dec	12	112	31	76	3	2	0	9.33
	<b>Total</b>	<b>71</b>	<b>889</b>	<b>198</b>	<b>665</b>	<b>17</b>	<b>4</b>	<b>5</b>	<b>12.52</b>

Table 4 Cont

<b>Indonesian</b>									
Year	Month	Effort	Total	BET	YFT	MAR	SWO	MSC	CPUE
2006	Jan	28	398	61	285	6	1	45	14.21
	Feb	23	255	61	175	4	3	12	11.09
	Mar	12	58	13	44	1	0	0	4.83
	Apr	9	76	16	55	3	2	0	8.44
	May	7	55	22	17	1	0	15	7.86
	Jun	5	23	5	12	0	1	5	4.60
	Jul	6	23	0	14	4	1	4	3.83
	Aug	4	20	5	13	2	0	0	5.00
	Sep	5	22	2	18	1	1	0	4.40
	Oct	4	26	8	14	2	2	0	6.50
	Nov	4	89	19	68	1	1	0	22.25
	Dec	20	564	90	455	8	11	0	28.20
	<b>Total</b>		<b>127</b>	<b>1,609</b>	<b>302</b>	<b>1,170</b>	<b>33</b>	<b>23</b>	<b>81</b>
2007	Jan	11	362	50	312	0	0	0	32.91
	Feb	7	177	14	150	9	4	0	25.29
	Mar	5	68	15	50	2	1	0	13.60
	Apr	3	50	8	36	3	1	2	16.67
	May	5	108	15	74	11	3	5	21.60
	Jun	5	104	6	76	6	1	15	20.80
	Jul	1	29	10	19	0	0	0	29.00
	Aug	1	3	0	0	0	0	3	3.00
	Sep	3	13	2	8	1	0	2	4.33
	Oct	6	46	7	35	2	0	2	7.67
	Nov	7	99	21	53	10	3	12	14.14
	Dec	6	103	28	61	8	1	5	17.17
	<b>Total</b>		<b>60</b>	<b>1,162</b>	<b>176</b>	<b>874</b>	<b>52</b>	<b>14</b>	<b>46</b>
2008	Jan	8	312	136	143	13	12	8	39.00
	Feb	12	392	215	163	8	4	2	32.67
	Mar	2	22	12	7	0	0	3	11.00
	Apr	2	43	22	18	0	1	2	21.50
	May	4	119	50	53	3	3	10	29.75
	Jun	9	122	2	85	17	6	12	13.56
	Jul	5	59	0	40	11	8	0	11.80
	Aug	4	27	0	22	3	2	0	6.75
	Sep	5	41	0	34	2	1	4	8.20
	Oct	8	233	0	185	11	12	25	29.13
	Nov	9	283	34	202	12	10	25	31.44
	Dec	17	456	113	266	43	18	16	26.82
	<b>Total</b>		<b>85</b>	<b>2,109</b>	<b>584</b>	<b>1,218</b>	<b>123</b>	<b>77</b>	<b>107</b>

Table 4 Cont

<b>Indonesian</b>									
Year	Month	Effort	Total	BET	YFT	MAR	SWO	MSC	CPUE
2009	Jan	21	437	163	256	9	1	8	20.81
	Feb	14	190	31	156	1	1	1	13.57
	Mar	14	284	142	138	2	2	0	20.29
	Apr	7	166	64	100	1	1	0	23.71
	May	7	81	23	54	0	0	4	11.57
	Jun	5	62	0	44	0	0	18	12.40
	Jul	4	41	0	40	1	0	0	10.25
	Aug	5	41	3	37	0	1	0	8.20
	Sep	9	187	25	141	0	0	21	20.78
	Oct	18	506	47	437	0	0	22	28.11
	Nov	18	707	3	646	0	25	33	39.28
	Dec	15	286	17	250	0	2	17	19.07
	<b>Total</b>	<b>137</b>	<b>2,988</b>	<b>518</b>	<b>2,299</b>	<b>14</b>	<b>33</b>	<b>124</b>	<b>21.81</b>
2010	Jan	20	698	25	589	2	1	81	34.90
	Feb	10	213	13	176	0	0	24	21.30
	Mar	7	81	39	40	1	0	1	11.57
	Apr	4	36	10	21	0	0	5	9.00
	May	0	0	0	0	0	0	0	0.00
	Jun	3	62	4	57	0	0	1	20.67
	Jul	5	60	12	44	3	0	1	12.00
	Aug	8	136	43	61	0	0	32	17.00
	Sep	6	119	2	107	0	0	10	19.83
	Oct	5	164	0	157	1	0	6	32.80
	Nov	8	188	0	179	1	0	8	23.50
	Dec	9	168	0	158	1	1	8	18.67
	<b>Total</b>	<b>85</b>	<b>1,925</b>	<b>148</b>	<b>1,589</b>	<b>9</b>	<b>2</b>	<b>177</b>	<b>22.65</b>
2011	Jan	11	188	0	179	0	0	9	17.09
	Feb	4	68	2	55	0	0	11	17.00
	Mar	6	80	33	38	1	0	8	13.33
	Apr	6	116	34	73	0	1	8	19.33
	May	3	53	0	41	0	0	12	17.67
	Jun	2	20	0	19	0	0	1	10.00
	Jul	6	102	0	90	0	0	12	17.00
	Aug	8	93	8	78	0	0	7	11.63
	Sep	2	33	0	18	0	9	6	16.50
	Oct	2	61	0	56	0	0	5	30.50
	Nov	5	74	0	70	0	0	4	14.80
	Dec	5	138	6	115	5	0	12	27.60
	<b>Total</b>	<b>60</b>	<b>1,026</b>	<b>83</b>	<b>832</b>	<b>6</b>	<b>10</b>	<b>95</b>	<b>17.10</b>

**Table 4 Cont**

<b>Indonesian</b>									
<b>Year</b>	<b>Month</b>	<b>Effort</b>	<b>Total</b>	<b>BET</b>	<b>YFT</b>	<b>MAR</b>	<b>SWO</b>	<b>MSC</b>	<b>CPUE</b>
2012	Jan	7	208	35	161	0	0	12	29.71
	Feb	6	200	57	102	9	0	32	33.33
	Mar	9	280	153	91	4	0	32	31.11
	Apr	13	163	53	43	2	0	65	12.54
	May	4	72	23	23	1	0	25	18.00
	Jun	12	566	131	376	0	0	59	47.17
	Jul	12	492	91	353	0	0	48	41.00
	Aug	4	105	5	50	0	0	50	26.25
	Sep	9	208	29	67	0	0	112	23.11
	Oct	8	192	40	100	0	0	52	24.00
	Nov	4	140	43	57	0	3	37	35.00
	Dec	7	227	91	86	25	12	13	32.43
	<b>Total</b>	<b>95</b>	<b>2,853</b>	<b>751</b>	<b>1,509</b>	<b>41</b>	<b>15</b>	<b>537</b>	<b>30.03</b>

**Table 5** Fishing effort (no.of trip), catch (mt) and CPUE (mt/trip) by Thai longliners landed at Phuket Province in 2007.

<b>Thai</b>									
Year	Month	Effort	Total	BET	YFT	MAR	SWO	MSC	CPUE
2007	Jan	0	0	0	0	0	0	0	0.00
	Feb	0	0	0	0	0	0	0	0.00
	Mar	2	6	3	0	0	0	3	3.00
	Apr	1	4	0	4	0	0	0	4.00
	May	1	4	0	4	0	0	0	4.00
	Jun	1	5	0	3	0	0	2	5.00
	Jul	0	0	0	0	0	0	0	0.00
	Aug	0	0	0	0	0	0	0	0.00
	Sep	0	0	0	0	0	0	0	0.00
	Oct	0	0	0	0	0	0	0	0.00
	Nov	0	0	0	0	0	0	0	0.00
	Dec	0	0	0	0	0	0	0	0.00
<b>Total</b>		<b>5</b>	<b>19</b>	<b>3</b>	<b>11</b>	<b>0</b>	<b>0</b>	<b>5</b>	<b>3.80</b>

**Table 6** Fishing effort (no.of trip), catch (mt) and CPUE (mt/trip) by Vanuatu longliners landed at Phuket Province in 2007.

<b>Vanuatu</b>									
Year	Month	effort	Total	BET	YFT	MAR	SWO	MSC	CPUE
2007	Jan	1	1	1	0	0	0	0	1.00
	Feb	0	0	0	0	0	0	0	0.00
	Mar	0	0	0	0	0	0	0	0.00
	Apr	0	0	0	0	0	0	0	0.00
	May	0	0	0	0	0	0	0	0.00
	Jun	0	0	0	0	0	0	0	0.00
	Jul	0	0	0	0	0	0	0	0.00
	Aug	0	0	0	0	0	0	0	0.00
	Sep	0	0	0	0	0	0	0	0.00
	Oct	0	0	0	0	0	0	0	0.00
	Nov	0	0	0	0	0	0	0	0.00
	Dec	0	0	0	0	0	0	0	0.00
<b>Total</b>		<b>1</b>	<b>1</b>	<b>1</b>	<b>0</b>	<b>0</b>	<b>0</b>	<b>0</b>	<b>1.00</b>



**Table 7** Fishing effort (no.of trip), catch (mt) and CPUE (mt/trip) by Malaysian longliners landed at Phuket Province during 2008 to 2011.

<b>Malaysian</b>									
Year	Month	effort	Total	BET	YFT	MAR	SWO	MSC	CPUE
2008	Jan	0	0	0	0	0	0	0	0.00
	Feb	0	0	0	0	0	0	0	0.00
	Mar	0	0	0	0	0	0	0	0.00
	Apr	0	0	0	0	0	0	0	0.00
	May	0	0	0	0	0	0	0	0.00
	Jun	0	0	0	0	0	0	0	0.00
	Jul	0	0	0	0	0	0	0	0.00
	Aug	0	0	0	0	0	0	0	0.00
	Sep	0	0	0	0	0	0	0	0.00
	Oct	0	0	0	0	0	0	0	0.00
	Nov	1	38	0	33	2	2	1	0.00
	Dec	0	0	0	0	0	0	0	0.00
	<b>Total</b>	<b>1</b>	<b>38</b>	<b>0</b>	<b>33</b>	<b>2</b>	<b>2</b>	<b>1</b>	<b>38.00</b>
2009	Jan	0	0	0	0	0	0	0	0.00
	Feb	0	0	0	0	0	0	0	0.00
	Mar	0	0	0	0	0	0	0	0.00
	Apr	0	0	0	0	0	0	0	0.00
	May	0	0	0	0	0	0	0	0.00
	Jun	0	0	0	0	0	0	0	0.00
	Jul	0	0	0	0	0	0	0	0.00
	Aug	0	0	0	0	0	0	0	0.00
	Sep	0	0	0	0	0	0	0	0.00
	Oct	0	0	0	0	0	0	0	0.00
	Nov	1	40	0	25	0	0	15	0.00
	Dec	0	0	0	0	0	0	0	0.00
	<b>Total</b>	<b>1</b>	<b>40</b>	<b>0</b>	<b>25</b>	<b>0</b>	<b>0</b>	<b>15</b>	<b>40.00</b>
2010	Jan	0	0	0	0	0	0	0	0.00
	Feb	0	0	0	0	0	0	0	0.00
	Mar	0	0	0	0	0	0	0	0.00
	Apr	0	0	0	0	0	0	0	0.00
	May	0	0	0	0	0	0	0	0.00
	Jun	0	0	0	0	0	0	0	0.00
	Jul	0	0	0	0	0	0	0	0.00
	Aug	0	0	0	0	0	0	0	0.00
	Sep	0	0	0	0	0	0	0	0.00
	Oct	0	0	0	0	0	0	0	0.00
	Nov	0	0	0	0	0	0	0	0.00
	Dec	0	0	0	0	0	0	0	0.00
	<b>Total</b>	<b>0</b>	<b>0</b>	<b>0</b>	<b>0</b>	<b>0</b>	<b>0</b>	<b>0</b>	<b>0.00</b>

**Table 7 Cont**

<b>Malaysian</b>									
Year	Month	effort	Total	BET	YFT	MAR	SWO	MSC	CPUE
2011	Jan	0	0	0	0	0	0	0	0.00
	Feb	0	0	0	0	0	0	0	0.00
	Mar	4	62	45	13	0	0	4	15.50
	Apr	4	40	22	12	0	0	6	10.00
	May	1	12	8	2	0	0	2	12.00
	Jun	0	0	0	0	0	0	0	0.00
	Jul	0	0	0	0	0	0	0	0.00
	Aug	0	0	0	0	0	0	0	0.00
	Sep	0	0	0	0	0	0	0	0.00
	Oct	0	0	0	0	0	0	0	0.00
	Nov	0	0	0	0	0	0	0	0.00
	Dec	0	0	0	0	0	0	0	0.00
<b>Total</b>		<b>9</b>	<b>114</b>	<b>75</b>	<b>27</b>	<b>0</b>	<b>0</b>	<b>12</b>	<b>12.67</b>

**Table 8** Fishing effort (no.of trip), catch (mt) and CPUE (mt/trip) by Belizean longliners landed at Phuket Province during 2010 to 2012.

<b>Belizean</b>									
Year	Month	effort	Total	BET	YFT	MAR	SWO	MSC	CPUE
2010	Jan	0	0	0	0	0	0	0	0.00
	Feb	2	115	0	82	0	0	33	57.50
	Mar	2	17	3	10	0	0	4	8.50
	Apr	1	4	2	2	0	0	0	4.00
	May	2	19	5	13	0	0	1	9.50
	Jun	2	41	3	38	0	0	0	20.50
	Jul	2	22	0	21	0	0	1	11.00
	Aug	0	0	0	0	0	0	0	0.00
	Sep	7	263	0	247	4	0	12	37.57
	Oct	11	470	0	448	6	0	16	42.73
	Nov	16	584	0	537	8	0	39	36.50
	Dec	20	633	14	577	9	0	33	31.65
<b>Total</b>		<b>65</b>	<b>2,168</b>	<b>27</b>	<b>1,975</b>	<b>27</b>	<b>0</b>	<b>139</b>	<b>33.35</b>

Table 8 Cont

<b>Belizean</b>									
Year	Month	effort	Total	BET	YFT	MAR	SWO	MSC	CPUE
2011	Jan	12	265	38	210	2	0	15	22.08
	Feb	9	187	50	125	0	0	12	20.78
	Mar	5	82	0	73	1	1	7	16.40
	Apr	2	14	0	11	0	0	3	7.00
	May	0	0	0	0	0	0	0	0.00
	Jun	5	66	1	44	0	10	11	13.20
	Jul	2	43	1	1	0	0	41	21.50
	Aug	0	0	0	0	0	0	0	0.00
	Sep	3	60	0	40	0	0	20	20.00
	Oct	9	217	1	185	0	0	31	24.11
	Nov	7	287	0	269	1	0	17	41.00
	Dec	9	336	6	277	6	0	47	37.33
	<b>Total</b>		<b>63</b>	<b>1,557</b>	<b>97</b>	<b>1,235</b>	<b>10</b>	<b>11</b>	<b>204</b>
2012	Jan	8	349	7	321	2	0	19	43.63
	Feb	6	94	0	81	0	0	13	15.67
	Mar	1	1	0	0	0	0	1	1.00
	Apr	2	18	5	3	1	0	9	9.00
	May	0	0	0	0	0	0	0	0.00
	Jun	0	0	0	0	0	0	0	0.00
	Jul	2	55	3	48	0	0	4	27.50
	Aug	0	0	0	0	0	0	0	0.00
	Sep	0	0	0	0	0	0	0	0.00
	Oct	2	43	3	34	0	0	6	21.50
	Nov	2	9	0	4	0	0	5	4.50
	Dec	3	93	2	89	0	1	1	31.00
	<b>Total</b>		<b>26</b>	<b>662</b>	<b>20</b>	<b>580</b>	<b>3</b>	<b>1</b>	<b>58</b>

**Table 9** Fishing effort (no.of trip), catch (mt) and CPUE (mt/trip) by Indian longliners landed at Phuket Province in 2011.

<b>India</b>									
Year	Month	effort	Total	BE	YF	MAR	SWO	MSC	CPUE
2011	Jan	0	0	0	0	0	0	0	0.00
	Feb	0	0	0	0	0	0	0	0.00
	Mar	0	0	0	0	0	0	0	0.00
	Apr	0	0	0	0	0	0	0	0.00
	May	0	0	0	0	0	0	0	0.00
	Jun	0	0	0	0	0	0	0	0.00
	Jul	0	0	0	0	0	0	0	0.00
	Aug	0	0	0	0	0	0	0	0.00
	Sep	0	0	0	0	0	0	0	0.00
	Oct	0	0	0	0	0	0	0	0.00
	Nov	1	4	0	4	0	0	0	4.00
	Dec	1	14	0	6	0	0	8	14.00
	<b>Total</b>	<b>2</b>	<b>18</b>	<b>0</b>	<b>10</b>	<b>0</b>	<b>0</b>	<b>8</b>	<b>9.00</b>

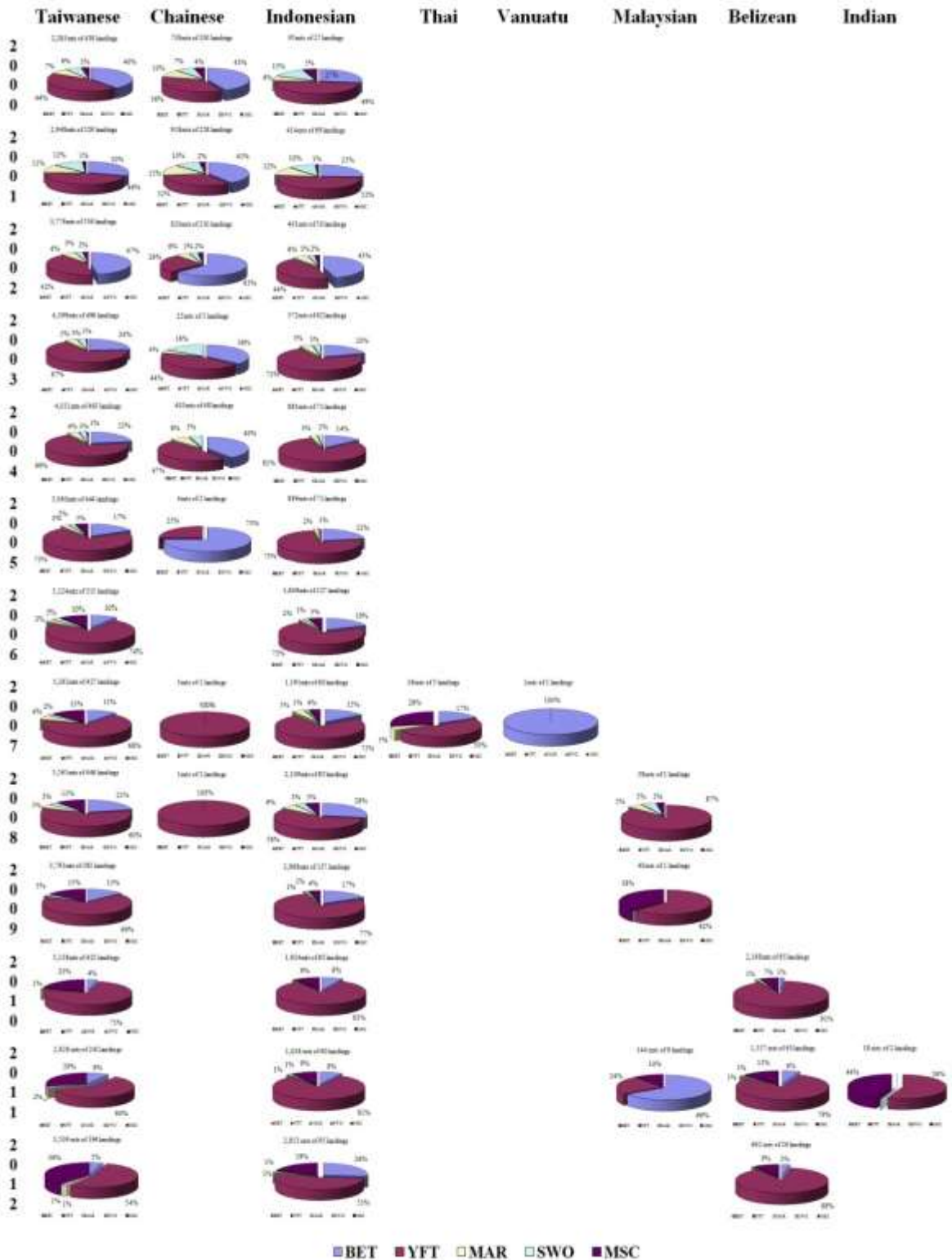


Figure 5 Species composition from tuna longliners landing in Phuket during 2000-2012, categorized by flag countries.

## 2. Tuna Purse Seiners

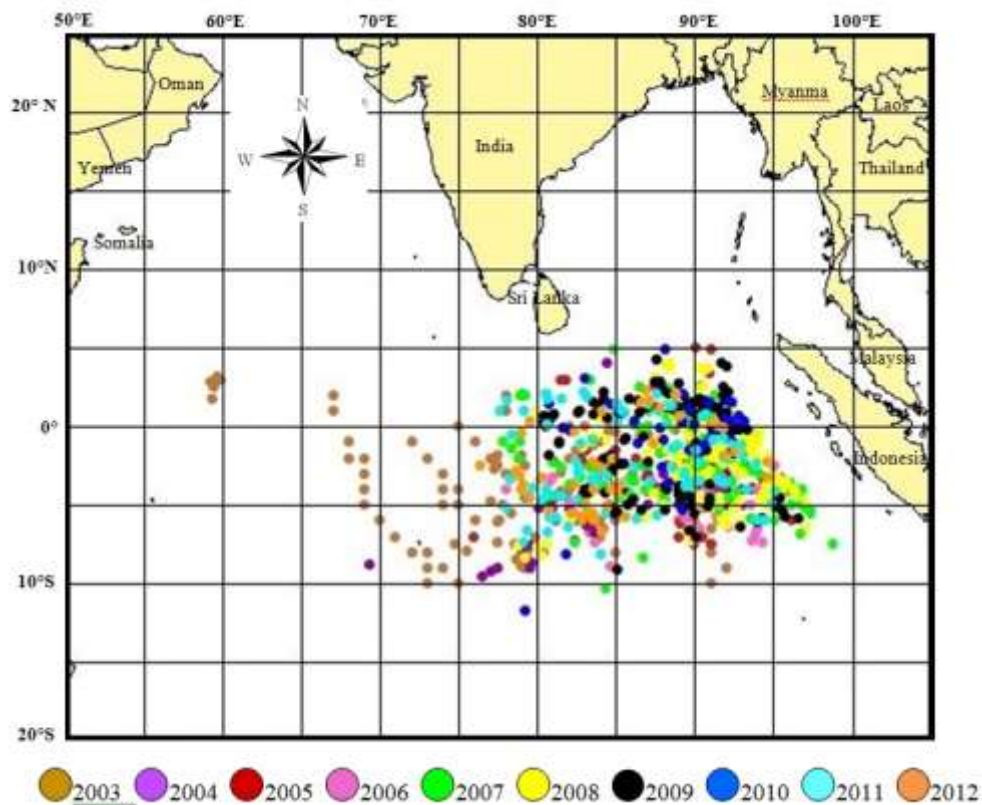
There were only Japanese tuna purse seiners landed in Phuket during the last six years which were the six vessels of the size range 349-477 (GRT, Gross Ton Net) 63.24-75.97 m (LOA, length overall). Type of preservation was brine and fish was kept as frozen. During 2003 to 2006, there was only Nippon Maru landed for 2-6 trips/year. In the later year, 2007, they were five vessels with totally landed of 12 trips. In 2008 there were five vessels with totally landed of 10 trips. In 2009 there were two vessels with totally landed of 8 trips. During 2010 to 2012 Nippon Maru was landed of 4, 6 and 4 trips respectively (Table 10).

**Table 10** Number of foreign tuna purse seines landed in Phuket during 2003 - 2012.

Type of vessel	Number of landing										
	2003	2004	2005	2006	2007	2008	2009	2010	2011	2012	Total
<b>Tuna Purse Seiners</b>	4	3	6	2	12	10	8	4	6	4	<b>59</b>

### Fishing Ground

The tuna purse seiners operated in the fishing grounds between latitude 05° 00' N to 10° 41' S and longitude 59° 12' E to 98° 48' E. The most intensive fishing effort were operated in the West of Indonesia and the areas around Maldives and Chagos while there were scantily fishing in the East of Somalia and around Seychelles. During 2003 to 2012 the tuna purse seiners operated only the fishing grounds where were near by the landing site, West of Indonesia and the areas around Maldives and Chagos. Thus it saved the cost of fuel (Figure 6).



**Figure 6** Fishing grounds of tuna purse seiners which landing in Phuket, 2003- 2012.

### Species composition, Catch and Value

Catch and percentage composition of skipjack, yellowfin tuna and bigeye tuna during 2003 to 2012 were 20,032 (62.8%), 5,041 (15.6%) and 6,760 mts (21.6%) with the value of 763.3, 227.5 and 280.0 million baht, respectively. The total catch of the three species during 2003 to 2012 were 31,833 mts with the value of 1,269 million baht (Table 11). There was a few of bycatch which the most frequented observed species was triggerfish, *Abalistes stellaris* (Bloch & Schneider, 1801).

**Table 11** Catch and value of tunas caught by foreigners purse seine landed in Phuket Province during 2003 - 2012.

Years	Catch (mts) and Value (million bath)										
	SKJ			YFT			BET			total	
	Catch		Value	Catch		Value	Catch		Value	Catch	Value
	Mts	%	Million	Mts	%	Million	Mts	%	Million	Mts	Million
2003	1,755	61.6	52.6	465	16.3	13.4	630	22.1	18.5	2,850	84.6
2004	1,602	66.8	47.6	324	13.5	10.2	474	19.8	14.8	2,400	72.6
2005	3,246	65.7	108.2	998	20.2	33.5	696	14.1	24.1	4,940	165.9
2006	895	66.3	32.5	220	16.3	10.1	235	17.4	10.8	1,350	52.2
2007	3,074	62.8	121.3	754	15.4	42.7	1,066	21.8	49.4	4,894	212.4
2008	2,435	60.7	114.9	874	21.8	52.9	703	17.5	37.3	4,012	205.1
2009	3,170	62.9	72.6	529	10.5	14.1	1,343	26.6	35.0	5,042	121.7
2010	912	52.6	32.9	311	17.9	12.8	512	29.5	19.8	1,735	65.5
2011	1,708	62.1	94.7	362	13.2	22.4	680	24.7	39.6	2,750	156.7
2012	1,235	66.4	86.0	204	11.0	15.3	421	22.6	30.7	1,860	132.0
Total	20,032	62.8	763.3	5,041	15.6	227.5	6,760	21.6	280.0	31,833	1,269

**AFRDEC** pursued the port sampling continuously and it has the consistent improvement in the sampling activity. The sampling coverage during the last ten year was 76.3% or 45 samples of totally 59 landings while 91.5% or 54 copied logbooks were received (Table12).

**Table 12** Number of foreigners purse seines landed at Phuket Deep Sea Port and percentage of port sampling during 2003 to 2012.

Flag	Number of Landing										Total
	2003	2004	2005	2006	2007	2008	2009	2010	2011	2012	
<b>Total Landing</b>	<b>4</b>	<b>3</b>	<b>6</b>	<b>2</b>	<b>12</b>	<b>10</b>	<b>8</b>	<b>4</b>	<b>6</b>	<b>4</b>	<b>59</b>
Port Sampling	3	3	3	2	9	9	8	4	3	1	45
%	75.0	100.0	50.0	100.0	75.0	90.0	100	100	50.0	25.0	76.3
Provided Logbook	4	2	3	2	11	10	8	4	6	4	54
%	100.0	66.7	50.0	100.0	91.7	100.0	100	100	100	100	91.5

**ENCOUNTERED PROBLEMS AND RECOMMENDATION**

Although the port sampling and surveying have been carried on, it seems to have some problems in connection with data collection and statistics these include.

1. Outcome of Sampling Program on Fresh Tuna Longline Vessels Unloading in Phuket during April 2000 to December 2006 had improved a lot of knowledge on the activities, total landing, species breakdown and size composition for each species caught by surface longliner for IOTC, OFCF and AFRDEC, DOF Thailand. Even the AFRDEC term would get many problems that cooperated from fishing agency. Anyhow we tried to deal again and again by many ways and now the situation is better. Consequence, the sampling program would be continuous monitoring, which support fund from relevant countries or IOTC.

2. The lack of logsheet of foreigner longliner unloaded at Phuket fishing port, only the interview data have been taken from the export company and master fishermen. Then, the data collection system of longliner has to be better established, so that all data users (such as the IOTC) researcher and fishermen may be satisfied.

3. The data collection and statistics address of tuna and billfish should have cooperated between the fleet nations and the port nations have been unloaded or transshipped (such as log sheet for foreigner tuna purse seine and lonliner fisheries in the Eastern Indian Ocean).

4. The logistic of fresh tuna longline should be established in the Eastern Indian Ocean, including the port sampling approach should be establish as well from IOTC.