

## FIRST ANNOUNCEMENT AND CALL FOR PAPERS

**SIXTH INTERNATIONAL SYMPOSIUM  
ON GIS/SPATIAL ANALYSES  
IN FISHERY AND AQUATIC SCIENCES  
TAMPA, FLORIDA, USA.  
AUGUST 25 (MON) - 29(FRI), 2014**



**[ORGANIZER]  
INTERNATIONAL FISHERY GIS SOCIETY**

**[LOCAL CO-ORGANIZER]  
FLORIDA SEA GRANT AND UNIV OF FLORIDA IFAS\* EXTENSION (USA)**

**Deadline for the registration and submission of abstracts is May 30, 2014**

***Please distribute this announcement to your colleagues or friends who might be interested in participating in this Symposium.***

*(\*) Institute of Food and Agricultural Sciences*

*(July, 2013)*

# CONTENTS

[BACKGROUNDS AND PAST SYMPOSIA]	03-06
[6 <sup>TH</sup> SYMPOSIUM (2014)]	06
[MAJOR OBJECTIVES]	07
[THEMES]	07-11
[CALL FOR THEMES FOR THE 6 <sup>TH</sup> SYMPOSIUM]	11
[PARTICIPATION]	12
[PRESENTATION OF PAPERS]	12
[KEYNOTE SPEAKERS & MODERATORS]	12
[LANGUAGE]	12
[AWARDS FOR BEST PRESENTATIONS]	12
[SUBJECTS COVERED]	13
[OUTLINE OF THE SYMPOSIUM PROGRAM]	14
[SUBMISSION OF ABSTRACTS]	15
[HELP FOR PUBLICITY OF THE SYMPOSIUM]	16
[PUBLICATION OF PROCEEDINGS(*)]	16
[CALL FOR ADVERTISEMENTS]	17
[EXCURSION]	17
[REGISTRATION]	18
[REGISTRATION FEES]	19-20
[CANCELLATION POLICY]	20
[SCHEDULE (DEADLINES & IMPORTANT DATES)]	21
[ACCOMMODATION (HOTEL RESERVATION)]	21
[MAP OF TAMPA, AIRPORT AND VENUE]	21
[VISA INFORMATION ]	21
[ORGANIZERS AND CONVENERS]	22
[LOCAL CO-ORGANIZER]	22
[SUPPORTING ORGANIZATION]	23
[SUPPORTING MEMBERS]	24
[FUTURE SYMPOSIUM]	25
[LIST OF PUBLICATIONS]	25

(\*) *GIS/SPATIAL ANALYSES IN FISHERY AND AQUATIC SCIENCES (VOLUME 6)*

## **DEAR COLLEAGUES,**

We are pleased to announce the 'Sixth International Symposium on GIS/ Spatial Analyses in Fishery and Aquatic Sciences'. Its general theme is the same as in the past five Symposia, i.e., to emphasize GIS as a tool for conducting spatial analyses in fishery and aquatic sciences, which encompasses the ecosystem approach to fisheries management and the interrelationships among inland + marine fisheries, aquaculture and the aquatic + terrestrial environments, in which the activities take place.

### **[BACKGROUNDS AND PAST SYMPOSIA]**

Applications of spatial analyses using GIS in fishery and aquatic sciences have lagged behind those used in terrestrial sciences. However, from the last decade of the 20<sup>th</sup> century to the present, GIS has rapidly become a powerful tool for spatial analyses in aquatic environments, as evidenced by the papers presented in the past five Symposia. There have also been local, regional and national GIS workshops and meetings on various topics in fishery and aquatic sciences including: fisheries oceanography, aquaculture, satellite remote sensing, inland fisheries, fisheries management, spatial numerical analyses, etc. However, the opportunity to share experiences in these developments and applications at a global level has been limited.

For this reason, the inaugural '**First International Symposium** on GIS in Fishery Science' was held in Seattle, Washington, USA in 1999. It was co-organized by the National Marine Fisheries Service (NMFS) and the 'Fishery GIS Research Group (Saitama, Japan)' (\*) and it was quite successful, with 230 presentations (131 orals, 89 posters and 10 GIS software demonstrations).

(\*) *Its name has been changed to 'International Fishery GIS Society' in 2009 to represent more than 6,000 members in the world covering broad subjects in fishery and aquatic sciences.*

The **Second Symposium** was held at the University of Sussex in Brighton, England, U.K. in 2002, and was co-organized by the International Fishery GIS Society and Dr Geoff Meaden (keynote speaker of the First Symposium), from the Fisheries GIS Unit, Department of Geography, Canterbury Christ Church University, Canterbury, UK. It was also successful, with 96 presentations (67 orals, 23 posters and 6 GIS system related demonstrations).



*Group photo*

*(Second Symposium at the University of Sussex in Brighton, England, U.K. in 2002)*

The **Third Symposium** took place in Asia at the Shanghai Fisheries University in China in 2005 and it was co-organized by the International Fishery GIS Society and Professor/Dean LiuXiong Xu, Department of Marine Fisheries Sciences and Technologies, Shanghai Fisheries University. It was fruitful with many Asian participants and with 70 presentations (47 orals, 15 posters and 8 GIS system related demonstrations).



*Group photo*

*(Third Symposium at the Shanghai Fisheries University, China in 2005)*

The **Fourth Symposium** took place in South America at the Universidade Santa Úrsula in Rio de Janeiro, Brazil with the local co-organizer, Dr Philip Conrad Scott, Instituto de Ciências Biológicas e Ambientais (Institute of Biological and Environmental Sciences). It was very productive, with many Brazilian participants and a total of 99 presentations (71 orals, 16 posters and 12 PC demos, i.e., GIS system related demonstrations).



*Group photo  
(Fourth Symposium at the Universidade Santa Úrsula, Rio de Janeiro, Brazil in 2008)*

The **Fifth Symposium**, the first one in Oceania, took place in Wellington, New Zealand and the local co-organizer was Dr Brent Wood, National Institute of Water and Atmospheric Research (NIWA). We had fewer participants than in the past (39 presentations – 30 orals, 5 posters and 4 GIS system related demonstrations using PC), so that we could have more time for questions and answers. The resulting in-depth discussions were deemed very fruitful by all participants.



*Group photo  
(Fifth Symposium at James Cook Hotel Grand Chancellor, Wellington, New Zealand in 2011)*

These five global fishery and aquatic sciences GIS conferences have generated interest world-wide and there has subsequently been strong interest in demonstrating new and further developments. In the three years since the fifth Symposium, it is apparent that there has been significant progress in GIS/spatial analyses in fishery and aquatic sciences. Hence, we encourage your participation in the Sixth Symposium to present new ideas or to share updates on your spatial research using GIS or on other GIS-related issues such as software development, computer hardware, education and reviews.

### **[SIXTH SYMPOSIUM (2014)]**

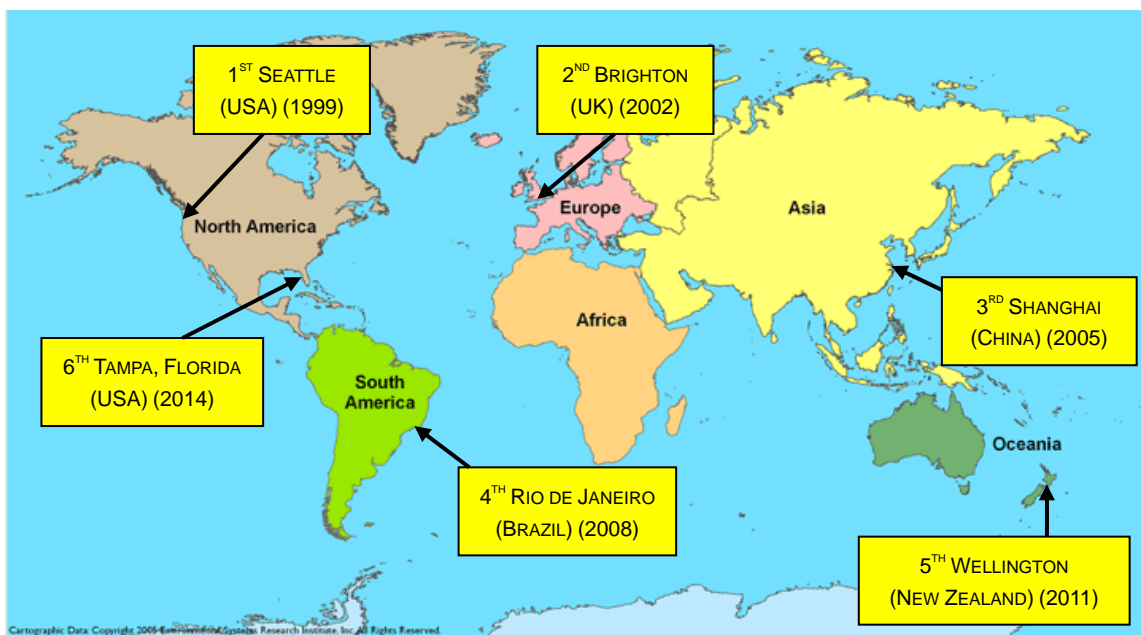
**This is the 'FIRST ANNOUNCEMENT AND CALL FOR PAPERS' for the 'Sixth International Symposium on GIS/Spatial Analyses in Fishery and Aquatic Sciences (August 25-29, 2014)'. The 'International Fishery GIS Society' will again be the main organizer and the venue of the Sixth Symposium will be Tampa Marriott Westshore (Hotel), Tampa, Florida, USA with the local co-organizer, Dr Bob Swett, Florida Sea Grant Extension Specialist and Associate Professor, Fisheries and Aquatic Sciences Program, University of Florida.**



## [MAJOR OBJECTIVES]

The primary objectives of the Sixth Symposium are the same as in the past i.e.,

- To highlight developments and applications of GIS/Spatial analyses in Fishery and Aquatic Sciences;
- To exchange ideas and information; and
- To suggest further improvements, techniques and applications of GIS/Spatial analyses in Fishery and Aquatic Sciences.



**LOCATIONS OF VENUES IN THE PAST SYMPOSIA AND THE 6<sup>TH</sup> SYMPOSIUM**

## [THEMES]

At each Symposium, there have been themes in order to highlight and strengthen that area of fishery GIS as follows (Summary is available in Table 1, page 11):

### **1<sup>st</sup> Symposium**

“**GIS software**” was the major theme of the First Symposium in 1999. GIS was becoming an essential tool for spatial analysis of fisheries data and various GIS software programs were either being developed or adapted for these analyses. The First Symposium provided a forum to showcase these GIS software applications.

## **2<sup>nd</sup> Symposium**

Following the First Symposium, we observed the development of basic quantitative spatial analyses using GIS; however, quantitative GIS applications and linkages to stock assessment, resources management, population estimation, geostatistics, forecasting, contour estimation, etc., were not well established or developed. Thus, the theme at the Second Symposium in 2002 was “**Spatial Numerical Analyses**”.

## **3<sup>rd</sup> Symposium**

Three themes were established for the Third Symposium in 2005. The first was “**Effective and Affordable GIS for Fishery and Aquatic Information,**” especially for the developing countries. Our intention was to encourage participation by people from developing countries and to demonstrate how GIS could be used by those in these countries.

The second theme was “**Spatial Fish Stock Assessment Modeling.**” At the First Symposium there were several papers on GIS (space) based production models and VPAs under development, which were exciting topics. Indeed there have been many geostatistics-related papers in the past Symposia.

The third theme was “**Spatial Fisheries Resource Management.**” Fisheries managers, not only in the developed countries but also in the developing countries, are gradually adopting GIS-based systems, along with GPS, VMS, satellites, electronic log books, etc., and integrating these into their organizations to manage fisheries resources. As a result this topic was extremely useful for government officials, engineers, GIS system developers, and scientists to help them learn about and exchange information on recent developments and technologies.

## **4<sup>th</sup> Symposium**

In the fourth symposium there were also three themes as follows:

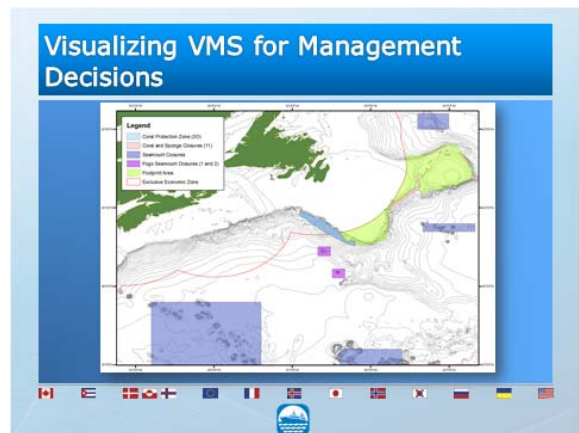
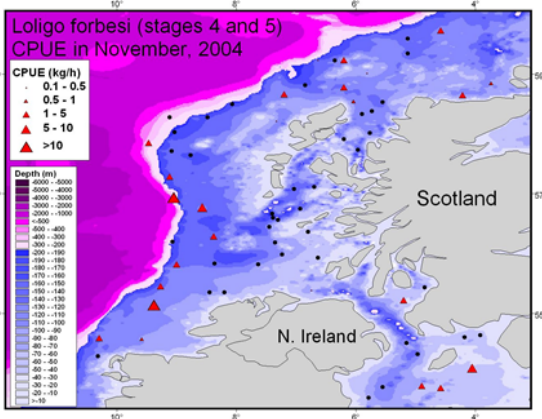
**Inland Water and Aquaculture GIS:** In the previous three symposia a predominance of marine related presentations, including marine aquaculture was observed. In view of the importance of future food securement from freshwater sources including aquaculture, the Third symposium’s final suggestions included the promotion of this area in the Fourth Symposium.



**Ecosystem Management:** This was ‘the’ hot topic world-wide in both fisheries and aquaculture. The effective implementation of environmental management using geo-technologies including GIS, Remote Sensing (RS), Global Positioning System (GPS), Vessel Monitoring Systems (VMS) was becoming a reality. FAO has developed an “Ecosystem Approach to Fisheries (EAF)” and currently was working on an “Ecosystem Approach to Aquaculture (EAA)”. These and other relevant topics including “Spatial Planning”, “Marine Protected Areas (MPA)”, “Global Warming”, “Biodiversity” and “Spatial Conservation and Management” were discussed in the Symposium.

**Future GIS:** This broad theme intended to offer symposium participants a chance to look at the current challenges and frontiers in GIS technologies including “Development of 3D and 4D applications”, “Web-GIS (multi-user and multi-function information management systems)” and “GIS for all (GIS Education and Capacity Building)” as well as other relevant topics.

Trawl survey, November 2004: CPUE for mature squid v depth



## **5<sup>th</sup> Symposium**

In the fifth symposium there were five themes as follows:

**Integrating fisheries or aquaculture into Inland or Marine Spatial Planning:** Many countries are now realizing that, as well as managing and planning their terrestrial areas, the use of their marine space and their lakes and rivers needs to be carefully managed if all the competing uses are to be sustained. So Marine Spatial Planning is being adopted. It will be essential that both fisheries and aquacultural activities fit into these plans; GIS is certain to be the main tool if plans are to be successful.

**Introducing social or economic factors into Ecosystems Approaches to Fisheries or Aquaculture:** Although the 4th Symposium looked at the topic of Ecosystems Management and Ecosystems Approaches to Fisheries (EAF) and to Aquaculture (EAA), it is increasingly clear that factors relating to social and to economic considerations of EAF or EAA are proving difficult to integrate, even with the help of GIS. We are therefore keen to see examples showing how these considerations may have been successfully adopted.

**Climate Change effects on aquatic regimes, fisheries and aquaculture:** People researching any aspects of Climate Change will be well aware that the warming associated with this is leading to shifts in the normal distributions of all biological species. Aquatic environments generally make species movements particularly easy to accomplish. Is GIS already being used to monitor existing fish regime changes and/or to predict likely future species distributions given certain predicted temperature changes?

**The integration of GIS with other disciplines or digital tools to aid fisheries or aquaculture:** We suspect that most GIS work carried out world-wide will simply download required data into a database management system and then use this data in a proprietary GIS. But there are huge opportunities to link the data and GIS to other forms of software, or to integrate GIS into other disciplines, and our audience deserves to see examples of the success and variety of such linkages.

**Data access and data sharing in fisheries or aquaculture GIS projects:** We are all well aware of the huge proliferation in digital data, and indeed for some of us this may be overwhelming in terms of quantity, sources and formats. It would be most useful to hear how GIS users have best coped with

sourcing their data, and what have been the opportunities and advantages to sharing data.

### Call for themes for 6<sup>th</sup> Symposium

We are now requesting suggestions of themes for the Sixth Symposium. Please send your ideas to Convener (Dr Tom Nishida), International Fishery GIS Society by E-mail at [fish-gis@world.odn.ne.jp](mailto:fish-gis@world.odn.ne.jp). The deadline is November 30, 2013. We will consider themes from the past five symposia if their importance needs to be re-emphasized at the Sixth Symposium.

**Table 1 Themes in the past Symposia and Call for themes for the 6<sup>th</sup> Symposium**

Symposium	Themes
First Symposium (1999)	GIS Software
Second Symposium (2002)	Spatial Numerical Analyses
Third Symposium (2005)	● Effective and Affordable GIS for Fishery and Aquatic Information (especially for people in developing countries)
	● Spatial Fish Stock Assessment Modeling
	● Spatial Fisheries Resource Management
Fourth Symposium (2008)	● Inland Water and Aquaculture GIS
	● Ecosystem Management
	● Future GIS
Fifth Symposium (2011)	<ul style="list-style-type: none"> <li>● Integrating fisheries or aquaculture into Inland or Marine Spatial Planning</li> <li>● Introducing social or economic factors into Ecosystems Approaches to Fisheries or Aquaculture</li> <li>● Climate Change effects on aquatic regimes, fisheries and aquaculture</li> <li>● The integration of GIS with other disciplines or digital tools to aid fisheries or aquaculture</li> <li>● Data access and data sharing in fisheries or aquaculture GIS projects:</li> </ul>
(Call for themes) <b>Deadline : November 30, 2013</b> Sixth Symposium (2014)	<i>We are now requesting theme proposals from members. If you have ideas, please inform Convener (Dr Tom Nishida), International Fishery GIS Society by E-mail at <a href="mailto:fish-gis@world.odn.ne.jp">fish-gis@world.odn.ne.jp</a>. We will consider themes from past symposia if their importance needs to be re-emphasized.</i>



## **[PARTICIPATION]**

Participation from a broad audience representing GIS/Spatial analyses in Fishery and Aquatic Sciences is encouraged, i.e., scientists, students, computer experts (developers or engineers), managers (government officials), administrators, educators and others.

## **[PRESENTATION OF PAPERS]**

For participants who wish to present their work, there are three ways, i.e., by **oral presentation**, **poster presentation** or **PC based demonstration** of GIS software, hardware and related systems. Duration of oral presentations will depend on number of presenters, but we tentatively set them for **20 minutes** (15 minutes for presentation and 5 minutes for questions and answers) (*subject to change by number of participants*). For poster presentations and PC demonstrations, particular sessions will be set up. The final duration of oral presentations and details of poster and PC demonstrations will be stated in the final announcement to be circulated by April, 2014.

## **[KEYNOTE SPEAKERS AND MODERATORS]**

Keynote speakers and moderators for each session will be selected and announced at a later date.

## **[LANGUAGE]**

We use only English for communications, presentations, abstracts, formal papers and all the other relevant matters on the Symposium. Presenters: please **speak slowly and clearly** as more than 50% of past participants were non-native English speakers.

## **[AWARDS FOR BEST PRESENTATIONS]**

We plan to give awards to the best presentations (orals and posters). Details will be included in the final announcement to be circulated by April, 2014.

## **[SUBJECTS COVERED]**

The Symposium will cover spatial analyses using GIS or GIS related topics in Fishery and Aquatic Sciences. Within this there are three main categories:

- [A] Marine related subjects;
- [B] Freshwater, Inland or Brackish-water related subjects; and
- [C] Other subjects.

Each of these three main categories may include a variety of sub-topics as follows:

### **[A] MARINE RELATED SUBJECTS**

- (1) Habitats
- (2) Fisheries
- (3) Fishery Oceanography
- (4) Marine Ecosystems and Ecosystem Approaches
- (5) Remote Sensing and/or Acoustic Survey
- (6) Marine Resources Analysis and Management
- (7) Geostatistics, Forecasting and Modeling
- (8) Mariculture
- (9) Artificial Reefs
- (10) Marine Protected Areas (MPA's) and Marine Reserves
- (11) EBSAs (Ecologically or Biologically Significant Areas) and VMEs (Vulnerable Marine Ecosystems)
- (12) Marine Spatial Planning and Ecoregion Planning
- (13) Others (specify for registration)

### **[B] FRESHWATER, INLAND OR BLACKISH-WATER RELATED SUBJECTS (INCLUDING WATERSHED AND ESTUARY)**

- (1) Habitats
- (2) Fisheries
- (3) Estuarine, Lacustrine and Riverine Ecosystems
- (4) Ecosystem approach
- (5) Remote Sensing and/or Acoustic Survey
- (6) Resources Analysis and Management
- (7) Forecasting, Geostatistics or Modeling
- (8) Aquaculture
- (9) Others (specify for registration)

### **[C] OTHERS**

- (1) Theory, Concepts or General Topics
- (2) Demonstration of GIS related Software, Database, Hardware or Systems using Computers
- (3) Education
- (4) Reviews
- (5) Others (specify for registration)

## [OUTLINE OF THE SYMPOSIUM PROGRAM](\*)

**Table 2. Outline of the 6th symposium schedule.**

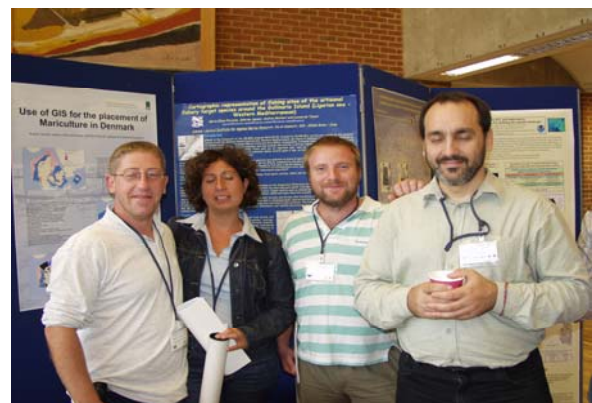
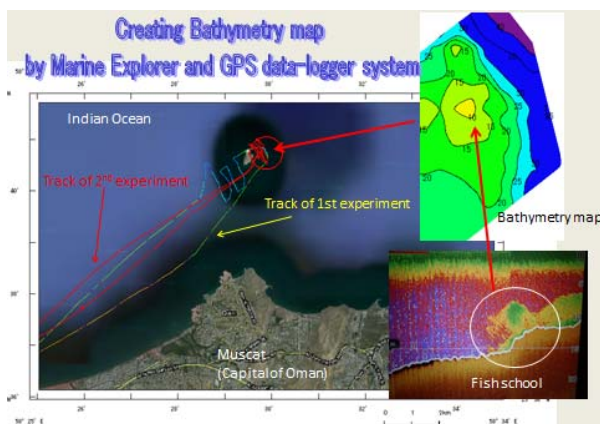
August, 2014	Events and Activities	Social events	Registration (**)
25 (Mon)	<ul style="list-style-type: none"> <li>● Openings and key note speeches</li> <li>● Oral presentations (GIS system, concept and education)</li> </ul>	ice-breaking party	Registration at the reception desk in the
26 (Tue)	<ul style="list-style-type: none"> <li>● Presentations (Major topics will be covered by Orals, Posters and demonstrations of GIS software, system with PCs)</li> </ul>	Group photo	
27 (Wed)		Symposium dinner	Secretariat room (8:30-17:00) Daily
28 (Thu)			
29 (Fri)	<ul style="list-style-type: none"> <li>● Award ceremony for the best presentations</li> <li>● Sum-up Session (Panel discussion)</li> <li>● Closings</li> </ul>		

### [Note (\*)]

For those who don't have time to stay for 5 days, we suggest that you attend for 3 days from Aug. 26-28 as major papers will be presented in these 3 days.

### [Note (\*\*)] Registration at the reception desk

All the participants (normal, late and walk-in registrants) should FIRST go to the reception desk in the Secretariat room. You will get one envelop including the program, the abstract proceedings, your name card and other information. Walk-in registrants need to register and pay the registration fee. The reception desk will open 8:30-17:00 every day (Aug 25-29).



## [SUBMISSION OF ABSTRACTS]

**All presenters MUST submit an abstract by May 30, 2014. Abstracts submitted after this date will not be accepted** due to the strict time constraint for producing the Symposium Program and the Abstract Proceedings. The Guidelines for submission of the abstract are stated in Box 1 (below). An Abstract Proceedings will be prepared and one copy will be provided to each participant at the registration desk at the Symposium. If you are interested in obtaining the Abstract Proceedings from the last four Symposia, please refer to the web site at <http://www.esl.co.jp/Sympo/publication.pdf>

### **BOX 1** **Guideline for Abstract Submission**

#### **(1) Format**

Each abstract will be printed on a sheet of standard A4 paper. The abstract should not exceed 350 words. In the abstract, please include objectives, methods (including the GIS software name if applicable) and results. One color GIS Map or Figure can be also submitted (optional). Example of the abstract format is specified as follows:

#### **(Format of the Abstract)**

(Title) Guidelines for the Symposium on GIS in Fishery Sciences

(Authors) Yoko ONO <sup>1/</sup> and John Lennon <sup>2/</sup>

1/ Professor, GIS Research Institute, Univ. of Hot Springs, Kyoto,  
424-0091, Japan ([yoko.ono@hot.spring.edu.jp](mailto:yoko.ono@hot.spring.edu.jp))

2/ GIS expert, University of GIS, .P.O. Box 99999, EC1Y 8SY, London,  
UK ([John\\_Lennon@GIS.ac.uk](mailto:John_Lennon@GIS.ac.uk))

(Key words) List by the alphabetical order, Maximum 8 key words

(Text) Not more than 350 words

#### **(2) Submission**

Abstracts should be submitted by E-mail to the Secretariat of the International Fishery GIS Society at [fish-gis@world.odn.ne.jp](mailto:fish-gis@world.odn.ne.jp) by May 30, 2014. Use MS-WORD file with one optional color GIS map.

## [HELP PUBLICIZE THE SYMPOSIUM]

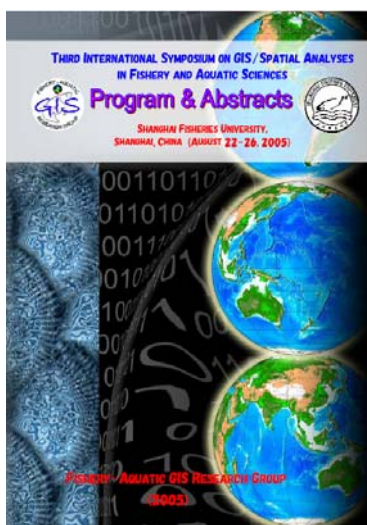
Please help to put this announcement in free listings, e.g. 'Fishing International', 'various GIS publications', etc. and/or to put it in the bulletin boards of research institutions, universities and other relevant outlets. Please also help to distribute this announcement to your colleagues or friends who might be interested in participating in this Symposium. We very much appreciate your kind help and cooperation in this.

## [PUBLICATION OF PROCEEDINGS]

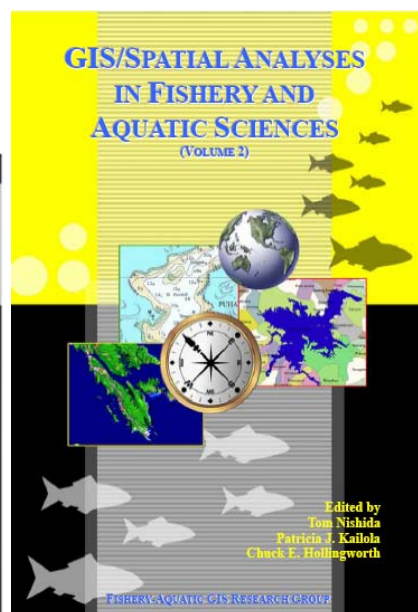
Those who make a presentation (oral, poster or PC demonstration) and who wish to submit a full paper for the Symposium Proceedings, to be published by the International Fishery GIS Society as **“GIS/SPATIAL ANALYSES IN FISHERY AND AQUATIC SCIENCES (VOLUME 6)”**, should send a full paper to the Secretariat of the International Fishery GIS Society at [fish-gis@world.odn.ne.jp](mailto:fish-gis@world.odn.ne.jp) by **September 30, 2014**.

Papers will be peer reviewed by two referees. If the paper is then accepted, it will be checked by professional editors before formal publication. The Proceedings will be published in 2015 or later. **“Guidelines” for the formal papers are available at** [http://www.esl.co.jp/Sympo/6th/Guidelines\\_2013\\_final.pdf](http://www.esl.co.jp/Sympo/6th/Guidelines_2013_final.pdf)

If you are interested in the Proceedings of the past Symposia and other publication, please refer to the web site at <http://www.esl.co.jp/Sympo/publication.pdf>



ABSTRACT (3<sup>RD</sup> SYMPOSIUM)



PROCEEDINGS (2<sup>ND</sup> SYMPOSIUM)



ABSTRACT (4<sup>TH</sup> SYMPOSIUM)



## [CALL FOR ADVERTISEMENTS]

If GIS related firms such as software and hardware developers are interested in placing their advertisements in our publications and E-mail circulations please contact the Secretariat of the International Fishery GIS Society by E-mail at [fish-gis@world.odn.ne.jp](mailto:fish-gis@world.odn.ne.jp). We can then discuss details including the design, the cost etc. Please note we have more than 5,000 E-mail members in more than 50 countries and 10 international organizations.

## [EXCURSION]

No excursions are planned. However, it is easily possible for visitors to book onto excursions through webs and/or local travel agencies.



## [REGISTRATION]

If you wish to participate in the 6th Symposium, send the following information by E-mail to the Secretariat of the International Fishery GIS Society at [fish-gis@world.odn.ne.jp](mailto:fish-gis@world.odn.ne.jp). **Please make one registration per one person attending.**

- (a) Full name (first, middle and last: LAST NAME IN CAPITAL LETTERS);
- (b) Name of the organization that you belong to;
- (c) Your Post, and Position or Title;
- (d) Postal (mailing) address;
- (e) E-mail address;
- (f) Telephone number including country code;
- (g) FAX number including country code; and

If you intend to present a paper (including poster, exhibition and demonstration using PC or other devices), please provide us with the following additional information. **(If you are making more than one presentation, please provide information for each separately).**

- (h) Title of your paper;
- (i) Names of the author and co-authors;
- (j) Subject of the paper: Select one from category specified in [SUBJECTS] (page 13), for example, [B]-(3);
- (k) Name of the presenter; and
- (l) Specify the method of presentation, i.e., [Oral], [Poster], or [PC demo] (software/hardware demonstration with PC).

After you send the registration form by E-mail, you will get the registration number from the Secretariat. If you don't get the number within one week, please let us know by E-mail at [fish-gis@world.odn.ne.jp](mailto:fish-gis@world.odn.ne.jp).



## [REGISTRATION FEES]

Please pay your registration fee once you get your registration number. When you send the registration fee, please indicate your registration number. Table 3 shows a schedule of the registration fees.

Table 3. Summary of registration fees

Type	Payment Period	registration fees	Payment Method (See next page for details)
Normal registration fee	By May 30, 2014	US \$ 300	Credit cards
Late registration fee	After June 1, 2014	US \$ 500	
On-site (walk-in) registration fee	Aug. 25-26, 2014 (during the Symposium)		Cash or credit cards

### [NOTE]

- (1) *Registration fees will be used for administrative expenses, costs of the facilities, the wages of the part time assistants, printing costs for the abstract proceedings, the Symposium Proceedings and other necessary expenses.*
- (2) *There are a limited number of the helper jobs during the Symposium such as the time keepers, microphone distributors, coffee-break helpers etc. If you are interested in, please let us know when you register. Then registration fees will be waived only if you register (by May 30, 2014) and selected. The priority for these positions will be for students and participants from developing countries.*



## Methods of Payment

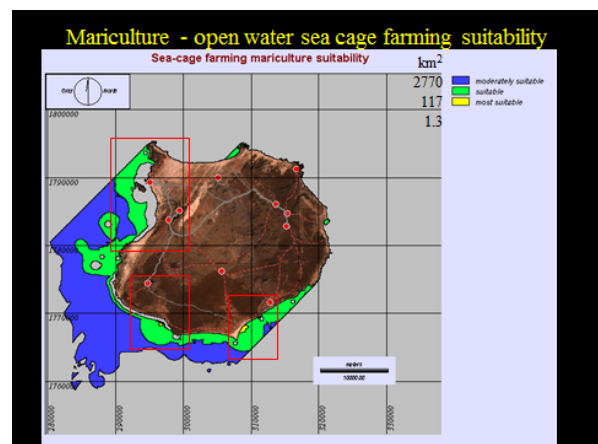
Visa, Master Card, American Express or JCB are accepted. Please inform us of your credit card name, its number and expiration year/month. For security reasons, please send your CR information by splitting it into a few separate e-mails to ([fish-gis@world.odn.ne.jp](mailto:fish-gis@world.odn.ne.jp)) or by FAX 81 (Japan)-49-241-2442 (international) or 049-241-2442 (in Japan) for Secretariat of the International Fishery GIS Society.

### Important notes:

- (1) You do not have to re-send your CR information if you have given it to us in the past, unless the information has changed (e.g., new expiry date).
- (2) As Agencies of these credit card companies are based in Japan, they will use Japanese currency for the settlements. This means that you might pay less than in the registration schedule (price list if you pay for publication listed page 27) or vice versa depending upon the exchange rates between two dates, i.e., the date when the credit card Agencies pay (settle with) the International Fishery GIS Society and the later date when these Agencies charge (settle with) the payees(you).

### [CANCELLATION POLICY]

If you wish to cancel your attendance after completing the registration, you should inform the Secretariat by E-mail, then 50% of your registration fee will be returned.



## [SCHEDULE: DEADLINES AND IMPORTANT DATES ]

Dates	Deadlines and important dates
November 30, 2013	Deadline of call for themes
May 30, 2014	Deadline for the normal registration Deadline for the abstract submission <i>Those who will present papers (including oral, posters and PC demonstration) MUST register and send the registration fee &amp; ABSTRACT by MAY 30, 2014, otherwise, presentations will not be accepted.</i>
June 1-Aug. 29, 2014	Period of late or on-site (walk-in) registration
Aug. 25-29, 2014	6th Symposium
September 30, 2014	Deadline for the formal papers for the Proceedings (GIS/Spatial analyses in Fishery and Aquatic Sciences) (Volume 6)
by the end of 2015	Publication of the Proceedings (GIS/Spatial analyses in Fishery and Aquatic Sciences) (Volume 6)

## [ACCOMMODATION (HOTEL RESERVATION)]

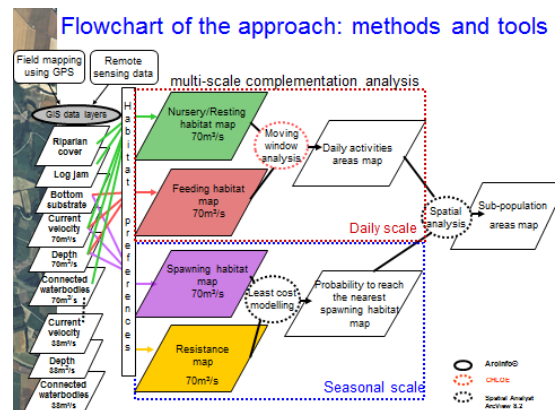
To be included in the final announcement (to be circulated by April, 2014).

## [MAP OF TAMPA, AIRPORT AND VENUE]

To be included in the final announcement (to be circulated by April, 2014).

## [VISA INFORMATION]

To be included in the final announcement (to be circulated by April, 2014).



## [ORGANIZERS AND CONVENERS]

### International Fishery GIS Society

(<http://www.esl.co.jp/Sympo/outline.htm>)

**Representatives and Conveners: Dr Tom Nishida and Dr Kiyoshi Itoh**

C/o Environmental Simulation Laboratory (<http://www.esl.co.jp/index.htm/>)

2F, Noble Building, 2-4-1 Arajuku-Cho, Kawagoe, Saitama, Japan 350-1124

E-mail: [fish-gis@world.odn.ne.jp](mailto:fish-gis@world.odn.ne.jp)

Phone : 81(Japan)-(0 for domestic)-49-242-9262

Fax : 81(Japan)-(0 for domestic)-49-241-2442

## [LOCAL CO-ORGANIZER]

### Dr Bob Swett

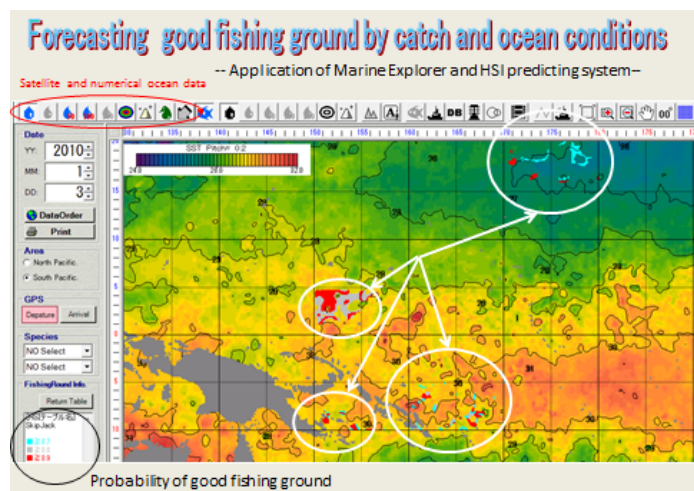
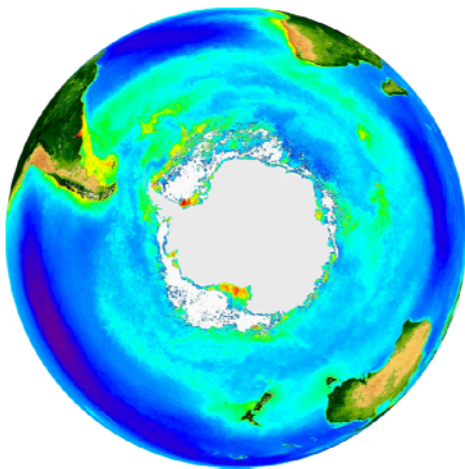
Extension Specialist, Florida Sea Grant; Associate Professor, University of Florida

P.O. Box 110760, Gainesville, FL 32611, USA

Email: [rswett@ufl.edu](mailto:rswett@ufl.edu)

Phone : USA (1)-352-392-6233

Fax : USA (1)-352-846-1332



## [SUPPORTING ORGANIZATION]

### **American Fisheries Society (AFS)**

#### **Bill Fisher (President)**

U. S. Geological Survey, New York Cooperative Fish and Wildlife Research Unit  
and

Department of Natural Resources, Cornell University, Ithaca, NY 14853, USA

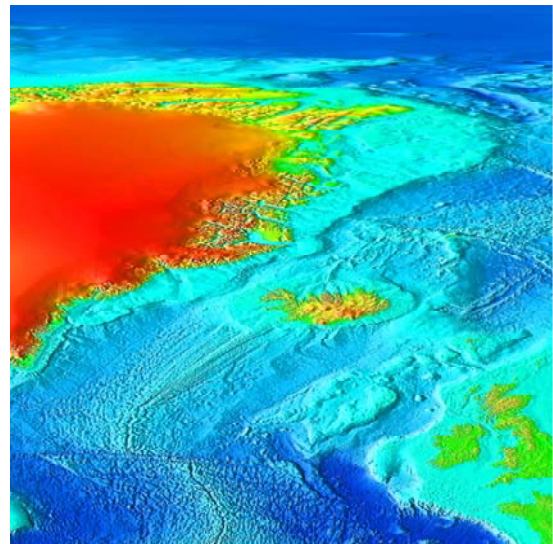
E-mail : [william.fisher@cornell.edu](mailto:william.fisher@cornell.edu)

Phone : 1(USA)-607-255-2839

Fax : 1(USA)-607-255-1895

Homepage : <http://www.fisheries.org/afs/index.html/>

Roles of the supporting organizations are to promote the Symposium by putting the Symposium information on their newsletters, journals and periodical publications.



## [SUPPORTING MEMBERS] (ALPHABETICAL ORDER OF THE LAST NAMES)

### **Dr José Aguilar-Manjarrez**

Fishery Resources Officer, FAO, Via delle Terme di Caracalla, 00153 Rome, Italy  
E-mail : [Jose.AguilarManjarrez@fao.org](mailto:Jose.AguilarManjarrez@fao.org)  
Phone : 39(Italy)-(0 for domestic)-6-570-55452  
Fax : 39(Italy)-(0 for domestic)-6-570-53020  
Home page : <http://www.fao.org/fishery/gisfish>

### **Dr Jarbas Bonetti**

Federal University of Santa Catarina, Campus Universitario, Florianopolis-SC, 88040-900, Brazil  
E-mail : [bonetti@cfh.ufsc.br](mailto:bonetti@cfh.ufsc.br)  
Phone : 55(Brazil)-(0 for domestic)-48-3231-3400  
Fax : 55(Brazil)-(0 for domestic)-48-3231-3434

### **Dr. Din Chen, Professor**

Karl E. Peace Endowed Eminent Scholar Chair in Biostatistics  
Jian-Ping Hsu College of Public Health, Georgia Southern University, Statesboro, GA 34060, U.S.A.  
E-mail : [dchen@georgiasouthern.edu](mailto:dchen@georgiasouthern.edu)

### **Dr. William L. Fisher**

Unit Leader and Associate Professor  
U. S. Geological Survey, New York Cooperative Fish and Wildlife Research Unit and  
Department of Natural Resources, Cornell University, Ithaca, NY 14853, U.S.A.  
E-mail : [william.fisher@cornell.edu](mailto:william.fisher@cornell.edu)  
Phone : 1(USA)-607-255-2839  
Fax : 1(USA)-607-255-1895  
Homepage : <http://www.dnr.cornell.edu/cals/dnr/research/fwres/index.cfm/>

### **Mr Md. Zakir Hossain**

Asian Institute of Technology (AIT), P.O. Box 4, Klong Luang, Pathumthani 12120, THAILAND  
E-mail : [Zakir.Hossain@ait.ac.th](mailto:Zakir.Hossain@ait.ac.th) or [zakirmh@gmail.com](mailto:zakirmh@gmail.com)  
Phone : 66(Thailand)-8-1694-0759

### **Dr Alessandro Gimona**

Macaulay Institute, Craigiebuckler, Aberdeen, Scotland, U.K.  
E-mail : [a.gimona@macaulay.ac.uk](mailto:a.gimona@macaulay.ac.uk)  
Phone : 44(UK)-(0 for domestic)-1224-876544  
Fax : 44(UK)-(0 for domestic)-1224-295511

### **Dr James McDaid Kapetsky (ex-FAO GIS expert)**

C-FAST, Inc. (Consultants in Fisheries and Aquaculture Sciences and Technologies),  
109 Brookhaven Trail, Leland NC U.S.A.  
E-mail : [cfast@sigmaxi.net](mailto:cfast@sigmaxi.net)  
Phone : 1(USA)-910-371-0012

### **Dr Geoff Meaden**

Dept. of Geography, Canterbury Christ Church Univ., North Holmes Road, Canterbury, Kent, CT1 1QU, U.K.  
E-mail : [geoff.meaden@canterbury.ac.uk](mailto:geoff.meaden@canterbury.ac.uk)  
Phone : 44(UK)- (0 for domestic)-1227-767700 (Ext. 2327)  
Fax : 44(UK)- (0 for domestic)-1227-767531

### **Dr Graham J. Pierce**

Department of Zoology, University of Aberdeen, Tillydrone Avenue, Aberdeen AB24 2TZ, Scotland, U.K.  
E-mail : [g.j.pierce@abdn.ac.uk](mailto:g.j.pierce@abdn.ac.uk)  
Phone : 44(UK) -(0 for domestic)-1224-272459  
Fax : 44(UK) -(0 for domestic)-1224-272396

### **Dr Naoki Tojo**

Staff of Marino-Forum 21 (MF21)  
Yusen-Okachimachi Bldg. 8F, 4-8-7, Taito, Taito-ku, Tokyo, 110-0016, JAPAN  
E-mail : [bering.raven@gmail.com](mailto:bering.raven@gmail.com)  
Phone : 81(Japan)-3-3837-5214  
FAX : 81(Japan)-3-5817-3870

### **Mr Vasilis D. Valavanis**

Marine GIS Laboratory (MGIS) PO BOX 2214, 71003, Iraklio, Crete, Greece  
E-mail : [vasilis@her.hcmr.gr](mailto:vasilis@her.hcmr.gr)  
Phone : 30(Greece)-2810-337817  
Fax : 30(Greece)-2810-337822  
Homepage (M-GIS) : <http://arch.her.hcmr.gr/>

*Other voluntary supporting members are welcome. Please contact the Convener.*

Roles of the supporting members are to promote the Symposium, to assist preparation of the Symposium, to assist various matters during the Symposium and other related matters.



## [FUTURE SYMPOSIUM]

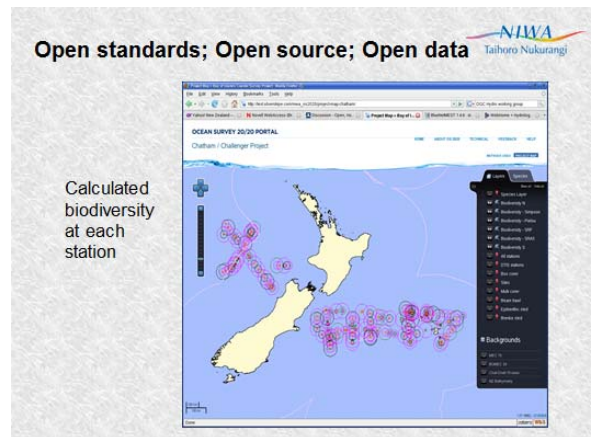
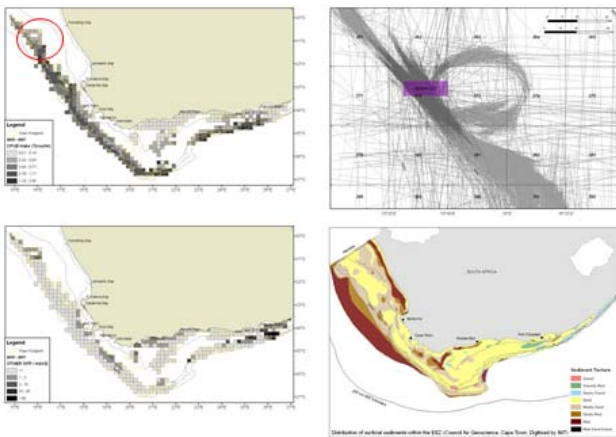
The International Fishery GIS Society organizes this type of Symposium every three years. The Seventh Symposium will therefore be held in 2017 and the venue will be determined in 2016.

## [LIST OF PUBLICATIONS]

Abstract Proceedings and Proceedings of the past Symposia (GIS/Spatial analyses in Fishery and Aquatic Sciences Volumes 1-5) are available. For details, refer to the web site: <http://www.esl.co.jp/Sympo/publication.pdf> or next page.

For the payment methods, please follow the instruction stated on page 20.

*Offshore Marine Protected Areas Spatial Planning*



## PUBLICATIONS FOR SALE (JULY, 2013)

[For any purchase the cost of Surface/Sea mail & handling fees is included] (\*)

- For the contents of Abstracts and Proceedings, please refer to <http://www.esl.co.jp/Sympo/cofpast/index.htm>.
- For book (Proceedings) reviews, please refer to <http://www.esl.co.jp/Sympo/bookrev/index.htm>

Symposium	code	Contents	Purchases by individuals (US\$)	Purchases by Library, Agency or Company (US\$)
<b>First Symposium</b> (NMFS, Seattle, USA, 1999)	(A)	Abstract Proceedings (132 papers)	30	40
	(B)	<b>PROCEEDINGS (40 original articles)</b> <b>[GIS/Spatial analyses in Fishery and Aquatic Sciences (Vol. 1)]</b>	80	100
	(C)	Package (special offer) [ (A) + (B) ]	90	110
	(C-DVD)	(C) all in DVD	60	80
	(D)	Individual reprints from (B)	2	4
<b>Second Symposium</b>  (University of Sussex, Brighton, UK, 2002)	(E)	Abstract Proceedings (95 papers)	30	40
	(F)	<b>PROCEEDINGS (46 original articles)</b> <b>[GIS/Spatial analyses in Fishery and Aquatic Sciences (Vol. 2)]</b>	80	100
	(G)	PowerPoint files(61 papers) (one) CD-ROM	20	30
	(H)	572 digital symposium pictures (one) CD-ROM	20	30
	(I)	Package (special offer) [ all items:(E) + (F) + (G) + (H) ]	120	150
	(I-DVD)	(I) all in DVD	140	170
	(J)	Package (special offer) [ (F) + (G) + (H) ]	100	130
	(K)	Package(special offer) [ (E) + (F) ]	90	110
<b>Third Symposium</b>  (Shanghai Fisheries University, China, 2005)	(L)	Individual reprints from (F)	2	4
	(M)	Abstract Proceedings (72 papers)	30	40
	(M2)	<b>PROCEEDINGS (28 original articles)</b> <b>[GIS/Spatial analyses in Fishery and Aquatic Sciences (Vol. 3)]</b>	80	100
	(N)	PowerPoint files(49 papers) (one) CD-ROM	20	30
	(O)	1,228 digital symposium pictures (two) CD-ROMs	20	30
	(P)	Package (special offer) [ (M)+ (N) + (O) ]	50	70
	(Q)	Package (special offer) [ (N) + (O) ]	30	50
	(Q2)	Package (special offer) [ all items: (M) +(M2)+ (N)+(O) ]	120	150
	(Q2-DVD)	(Q2) all in DVD	140	170
<b>Fourth Symposium</b>  (Universidade Santa Úrsula Rio de Janeiro, Brazil, 2008)	(Q3)	Package (special offer) [ (M) +(M2) ]	90	110
	(Q4)	Individual reprints from (M2)	2	4
	(S1)	Abstract Proceedings (95 papers)	30	40
	(S2)	<b>PROCEEDINGS(35 articles)</b> <b>[GIS/Spatial analyses in Fishery and Aquatic Sciences (Vol. 4)]</b>	80	100
	(S3)	PowerPoint files(83 papers) (one) CD-ROM	20	30
	(S4)	627 Digital symposium pictures (one) DVD	20	30
	(S5)	Package (special offer) [ (S1)+ (S3) + (S4) ]	50	70
	(S6)	Package (special offer) [ (S3) + (S4) ]	30	50
	(S7)	Package (special offer) [ all items: (S1) +(S2)+ (S3)+(S4) ]	120	150
	(S7-DVD)	(S7) all in DVD	140	170
<b>Fifth Symposium</b>  (NIWA and SilverStripe, Wellington, New Zealand, 2011)	(S8)	Package (special offer) [ (S1) +(S2) ]	90	110
	(S9)	Individual reprints from (S2)	2	4
	(T1)	Abstract Proceedings (39 papers)	30	40
	(T2)	<b>PROCEEDINGS(15 articles)</b> <b>[GIS/Spatial analyses in Fishery and Aquatic Sciences (Vol. 5)]</b>	80	100
	(T3)	PowerPoint files(32 papers) (one) DVD	20	30
	(T4)	(500++) Symposium pictures (one) DVD	20	30
	(T5)	Package (special offer) [ (T1)+ (T3) + (T4) ]	50	70
	(T6)	Package (special offer) [ (T3) + (T4) ]	30	50
	(T7)	Package (special offer) [ all items: (T1) +(T2)+ (T3)+(T4) ]	120	150
(T7-DVD)	(T7) all in DVD	140	170	
Special issue (2005)	(T8)	Package (special offer) [ (T1) +(T2) ]	90	110
	(T9)	Individual reprints in PDF from (T2)	10	20
	(R)	Application of GIS and Remote Sensing Technologies in Inland Fisheries Management and Planning in Asia	30	40

- Prices for authors and co-authors are a half (50% off) of the price list.
- (\*) For air mail (including the handling fee): add US\$ 30 for any amount the purchases.
- For surface/sea mail, it will take for 1-3 months to deliver & 1-2 weeks by air mail depending on the destination and the situations.



**1<sup>ST</sup> SYMPOSIUM (MARCH 2-4, 1999)**  
 VENUE: DOUBLE TREE HOTEL (SEATTLE/TACOMA AIRPORT)  
 SEATTLE, WASHINGTON, USA  
**CO-ORGANIZER: DR LOH-LEE LOW, NATIONAL MARINE FISHERIES SERVICE (NMFS), NOAA (USA)**



**2<sup>ND</sup> SYMPOSIUM (SEPTEMBER 3-6, 2002)**  
 VENUE: UNIVERSITY OF SUSSEX  
 BRIGHTON, UK  
**CO-ORGANIZER: DR GEOFF MEADEN  
 CANTERBURY CHRIST CHURCH UNIVERSITY (UK)**



**3<sup>RD</sup> SYMPOSIUM (AUGUST 22-26, 2005)**  
 VENUE: SHANGHAI FISHERIES UNIVERSITY  
 SHANGHAI, **CO-ORGANIZER: PROFESSOR LIU-XIONG XU (許柳雄教授), SHANGHAI FISHERIES UNIVERSITY (CHINA)**



**4<sup>TH</sup> SYMPOSIUM (AUGUST 25-29, 2008)**  
 VENUE: UNIVERSIDADE SANTA ÚRSULA  
 RIO DE JANEIRO, BRAZIL. **CO-ORGANIZER: DR PHILIP SCOTT, UNIVERSIDADE SANTA ÚRSULA (BRAZIL)**



**5<sup>TH</sup> SYMPOSIUM (AUGUST 22-25, 2011)**  
 VENUE: JAMES COOK HOTEL GRAND CHANCELLOR,  
**CO-ORGANIZER: MR BRENT WOOD AND Ms FRANCES NOLAN. NATIONAL INSTITUTE OF WATER AND ATMOSPHERIC RESEARCH (NIWA) (NEW ZEALAND)**



**6<sup>TH</sup> SYMPOSIUM (AUGUST 25-29, 2014)**  
 VENUE: TAMPA MARRIOTT WESTSHORE, TAMPA,  
 FLORIDA, USA. **CO-ORGANIZER: DR BOB SWETT,  
 FLORIDA SEA GRANT AND UNIVERSITY OF FLORIDA FISHERIES AND AQUATIC SCIENCES PROGRAM (USA)**