

## PROGRESS REPORT OF THE IOTC SECRETARIAT

Submitted by: IOTC Secretariat, Last updated: 15 April 2014

### 1. MEMBERSHIP OF THE IOTC

- Contracting Parties:** Since the 17<sup>th</sup> Session, there has been no accession to the IOTC Agreement. The IOTC still consists of 31 Members: Australia, Belize, China, Comoros, Eritrea, European Union, France (OT), Guinea, India, Indonesia, Iran (Islamic Rep. of), Japan, Kenya, Korea (Rep. of), Madagascar, Malaysia, Maldives, Mauritius, Mozambique, Oman, Pakistan, Philippines, Seychelles, Sierra Leone, Sri Lanka, Sudan, Tanzania (United Rep. of), Thailand, United Kingdom (OT), Vanuatu and Yemen.
- Cooperating Non-Contracting Parties:** Senegal and South Africa (Rep. of) are Cooperating Non-Contracting Parties after having their status renewed for another 12 months at the last Session.

### 2. MISSION OF THE SECRETARIAT AND STRATEGY OF IMPLEMENTATION

- The mission of the Secretariat is: *To facilitate the processes required to implement the policies and activities of the Commission, whose goal is to achieve the objectives stated in the IOTC Agreement.* In essence, these processes include the acquisition, processing and dissemination of information that constitutes the basis for the Commission's decisions, as well as supporting the actions taken by the Members and Cooperating Parties to implement effectively those decisions.
- The Secretariat is divided into sections composed of staff with similar specialised skills ([Fig. 1](#)). In order to provide support to the activities of the Commission and its subsidiary bodies, there is close cooperation between the Sections in the production of datasets and analyses that will assist the Scientific Committee and its Working Parties to formulate its advice to the Commission. Similarly, the Data Section and the Compliance Section cooperate in the maintenance of the databases needed to monitor the effectiveness in the implementation of the measures adopted by the Members.

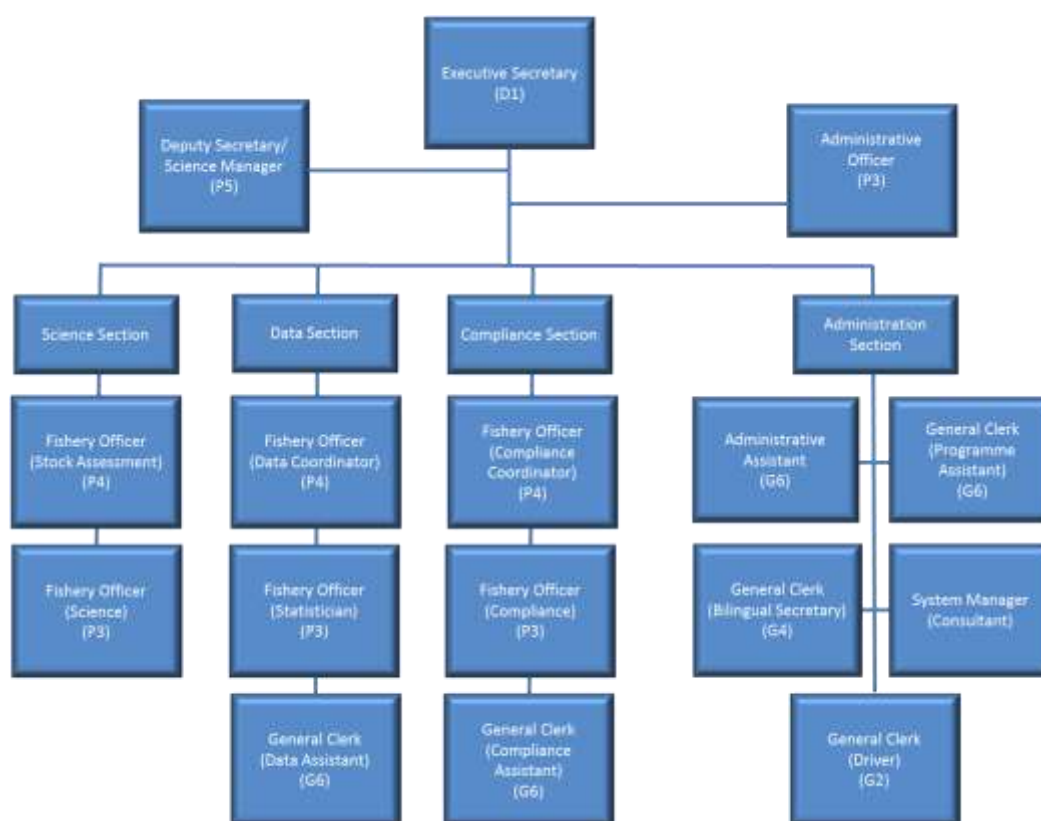


Fig. 1. Structure of the IOTC Secretariat in 2013.

### 2.1 *Professional Staff – Recruitment activities*

5. Administrative officer: Mr Steven Ciocca joined the Secretariat in early April, 2013. The Selection Panel consisted of the IOTC Executive Secretary (Mr Rondolph Payet), the IOTC Advisor (Mr Alejandro Anganuzzi) and the IOTC Tagging Expert (Mr Julien Million).

### 2.2 *General Grade Staff – Recruitment activities*

6. IT Manager: Mr Slim Dogley joined the Secretariat in October 2013 as the IT Manager, as an FAO consultant supported by the additional contribution from Seychelles. The Selection Panel consisted of the IOTC Executive Secretary (Mr Rondolph Payet), the IOTC Deputy Secretary / Science Manager (Dr David Wilson), and the IOTC Administrative Officer (Mr Steven Ciocca).
7. Compliance Assistant: Ms. Wendy Perreau joined the Secretariat in July 2013 as a General Clerk (Compliance Assistant). The Selection Panel consisted of the Compliance Coordinator (Mr Gerard Domingue), the Compliance Officer (Mr Florian Giroux) and the Administrative Assistant (Mrs Rosemary Anacoura).

## 3. REPORTING STRUCTURE

8. To facilitate accountability, the activities of the Secretariat in 2013 have been grouped into six major functional areas which reflect the ‘*Program of work and budget*’ approved by the Commission at its 17<sup>th</sup> Session in 2013, as follows:
- **Support to scientific activities:** The acquisition and processing of scientific data, as required by the Scientific Committee to conduct stock status analyses. Supply of stock assessment services as required by the working groups.
  - **Support to compliance activities:** Maintenance of lists of vessels and compliance databases, reporting on compliance by Contracting Parties and Cooperating Non-Contracting Parties (CPCs). Providing support to CPCs in the implementation of IOTC Resolutions.
  - **Communications and public information:** Considered essential in allowing CPCs to follow the progress of the Commission’s work in a transparent way, and to increase the visibility of the Commission’s activities to the general public.
  - **Support to meetings:** Logistic support in the facilitation of meetings, preparation of reports and maintenance of the meetings calendar
  - **Information Technology:** Provide basic computer infrastructure, including maintenance of the network and servers, as well as Internet support.
  - **Administration:** Financial administration in conjunction with FAO, administration of extra-budgetary funds, travel arrangements, general logistical support to the activities of the technical sections.
9. The Secretariat’s Programme of Work for 2013, approved by the Commission at its 17<sup>th</sup> Session is provided at Appendix I and includes brief summaries of the progress made, in addition to the information provided throughout this report. Reference should also be made to the proposed Strategy for the Secretariat for the next three years – Document IOTC–2014–SCAF11–08[E/F].

## 4. SUPPORT TO SCIENTIFIC ACTIVITIES

### 4.1 *Scientific meetings*

10. In 2013 five Working Party meetings were organised and facilitated by the IOTC Secretariat ([Table 1](#)). The current Chairs and Vice-Chairs for each Committee and Working Party are provided at [Appendix II](#).
11. The Secretariat produced 62 documents (reports, working papers, data summaries, assessments etc.) in support of scientific process in 2013. In addition, the Secretariat produced revised Executive Summaries for all of the IOTC stocks, as well as for sharks, seabirds and marine turtles in association with various experts, totalling 25 Executive Summaries.

**Table 1.** Scientific Meetings held in 2013, prior to the 16<sup>th</sup> Session of the IOTC Scientific Committee meeting. Working Parties not held in 2013 are also shown for completeness. Numbers in brackets represent numbers for the previous working party meeting.

Working Party	Date and place of most recent meeting	No. of participants				Meeting Participation Fund				No. of documents (previous meeting)
		2010	2011	2012	2013	2010	2011	2012	2013	
Neritic Tunas	2–5 July, Bali, Indonesia	–	28	35	42	–	9 <sup>1</sup>	10	11	Total: 40 (24) Working papers: 34 (23) Information papers: 6 (1)
Ecosystems and Bycatch	12–16 September, La Réunion, France	37	49	48	32	9 <sup>2</sup>	7 <sup>3</sup>	7	11	Total: 64 (64) Working papers: 47 (40) Information papers: 17 (24)
Billfish	18–22 September, La Réunion, France	12	27	23	24	0	5	5	10	Total: 35 (32) Working papers: 32 (21) Information papers: 3 (12)
Tropical Tunas	24–29 October, San Sebastian, Spain	39	49	47	46	11	13	8	10	Total: 57 (51) Working papers: 42 (40) Information papers: 15 (11)
Data Collection and Statistics	29–30 November, Busan, Rep. of Korea	28	21	–	23	–	2	–	5	Total: 16 (21) Working papers: 15 (12) Information papers: 1 (9)
Scientific Committee	2–6 December, Busan, Rep. of Korea	41	50	54	75	7	10	12	11	Working papers: 17 (11) Executive Summaries: 25 Information papers: 15 (11)
<b>Working Parties not held in 2013</b>										
Methods	2012: 22–23 October, Mauritius	18*	–	22	–	–	–	1	–	Total: 15 (–) Working papers: 4 (–) Information papers: 11 (–)
Temperate Tunas	2012: 20–22 August, Shanghai, China	15*	16	26	–	–	2	3	–	Total : 28 (25) Working paper : 19 (19) Information papers : 9 (6)

\*2008.

12. The Secretariat also facilitated the participation of invited experts that were selected to attend each of the Working Party meetings in 2013. The names and affiliations of each of the Invited Experts for 2013 are provided in [Table 2](#).

**Table 2.** Invited Experts for Working Party meetings in 2013.

Working Party	Date and place	Name	Affiliation
Neritic Tunas	2–5 July, Bali, Indonesia	Dr. Shiji Zhou	CSIRO, <b>Australia</b>
Ecosystems and Bycatch	12–16 September, La Réunion, France	Dr. Ronel Nel	Nelson Mandela Metropolitan University, <b>South Africa</b>
Billfish	18–22 September, La Réunion, France	Dr. Humber Andrade	Universidade Federal Rural de Pernambuco, <b>Brazil</b>
Tropical Tunas	24–29 October, San Sebastian, Spain	Dr. Andrew Cooper	Simon Fraser University, <b>Canada</b>

13. The Secretariat assisted in the coordination of Working Party activities for the IOTC species, contributing a number of supporting analyses, full stock assessments for bigeye tuna, neritic tunas and marlins, and held the first workshop on CPUE standardisations in the Indian Ocean Region across all gear types. In discussion papers on improving the IOTC stock assessment process (see list of WPs in [Appendix III](#)), the Secretariat represented the IOTC in the broader fisheries community, e.g. by participating as an invited expert at various meetings.

#### 4.2 Data-related activities – General

14. A large proportion of staff time is devoted to the acquisition, processing and quality assurance of data required under IOTC Resolutions. These data are utilised in monitoring compliance or in scientific analyses necessary for the assessment of the status of stocks. The IOTC databases are constantly revised and updated. The IOTC Secretariat has been trying to migrate data from the old structure to the new structure for the past few years but

<sup>1</sup> Another seven scientists were supported by IOTC through the Capacity Building funds as they were also attending the capacity building workshop in Chennai, India (WPNT01)

<sup>2</sup> Six scientists attended both the WPTT and WPEB

<sup>3</sup> Three scientists attended both the WPTT and WPEB

this work had to be postponed due to other commitments and is not expected to be completed until the end of 2015.

15. The regular suite of datasets have been supplied for all scientists engaged in stock assessment activities and reports on status of IOTC databases produced for relevant Working Parties and SC, and for the preparation of the Country Reports of the Compliance Committee. The new IOTC Web Site contains more user-friendly features and tools to allow access from the general public to the IOTC datasets; and new information on Capacity Building activities undertaken by the IOTC Secretariat. In addition to the standard fishery datasets, the Secretariat has completed an update of the tagging datasets, through further validation, verification and correction of the data from the small-scale projects, as well as for the RTTP-IO, undertaken in 2013.

#### **4.2.1 Data-related activities: reporting**

16. There exists a substantial gap in the availability of fisheries statistics from the different fisheries and fishing gears employed in the IOTC area. While there have been some recent improvements in the submission of fisheries statistics relating to nominal catch, and catch and effort, there is still a lack of data reported by CPCs in relation to size frequency data. The level of compliance also remains low with regards to the submission of data relating to species caught incidentally by tuna fishing operations, that is, marine turtles, seabirds, cetaceans, and sharks. It should be noted that the Commission has adopted specific Conservation and Management Measures for these species.
17. Following a recommendation from the IOTC Scientific Committee in 2013, in March 2014 the IOTC Secretariat organised a Regional Workshop to support compliance with IOTC requirements for the collection and reporting of fisheries data to the IOTC, using funds from the Commission, and additional financial support from the COI-SmartFish and Bay of Bengal Large Marine Ecosystems projects. The objective of the Workshop was to assess performance of IOTC CPC's to comply with IOTC Mandatory Statistical Requirements and, where required, identify areas in which IOTC could assist its Members to ensure full compliance with IOTC requirements for statistics in the future. The workshop met in Mauritius for 3 days (18–20 March 2014) and was attended by 26 participants, the majority from developing coastal countries in the Indian Ocean.

#### **4.2.2 Data-related activities: Capacity building activities**

18. The IOTC Secretariat continues to provide support to developing coastal states using funds from the IOTC or through the IOTC-OFCF Project, which has provided resources and advice for the strengthening of data collection systems in more than 20 countries in the region since its inception in 2002. In addition, the IOTC Secretariat is cooperating with COI-SmartFish, the BOBLME Project, the ISSF, and other initiatives in the coordination and execution of capacity building activities in developing coastal states of the Indian Ocean.
19. Phase III of the **IOTC-OFCF Project** came to an end in March 2013. All activities undertaken during Phase III of the Project are summarised in the IOTC-OFCF Project Comprehensive Report<sup>4</sup>.
20. In addition, as part of the ongoing cooperation between the EU-funded Project COI-SmartFish and the IOTC the IOTC Secretariat has coordinated the implementation of data collection activities in Madagascar and Comoros. Finally, the IOTC Secretariat is working with the Bay of Bengal Large Marine Ecosystems (BOBLME) Project to strengthen data collection and processing in Sri Lanka, as a continuation to activities previously covered by the IOTC-OFCF Project.
21. Following is a summary of the activities undertaken in 2013:
- In June 2013, in response to a request from the Directorate General of Capture Fisheries of Indonesia, the IOTC Secretariat visited Indonesia to assist in the organisation of an Albacore Catch Estimation Workshop. The main purpose of this mission was to respond to a request from the Commission for a review of the catch series of albacore for the fleets based in Indonesia. The results of the Workshop and new catches of albacore estimated for the fisheries of Indonesia are available in the Report from the Workshop, which was disseminated to all participants in the Workshop, and the Commission, through IOTC Circular 2013-96, (October 2013). The IOTC Secretariat updated the catches of albacore in the IOTC database using the new series agreed at the workshop.
  - Survey on the status of data collection and processing systems for the longline fishery of Indonesia (November 2013), as a follow-up activity to assess the continuation of activities implemented by the IOTC-OFCF Project and other partners through the Multilateral Catch Monitoring Programme (2002-07). (IOTC-OFCF Project.)

<sup>4</sup> IOTC-OFCF Project (2013). Comprehensive Report IOTC-OFCF Project (Phase III) June 2010 – March 2013. (<http://www.iotc.org/documents/comprehensive-report-iotc-ofcf-project-phase-iii-june-2010-march-2013>)

- c) Support to the continuation of data collection and management activities in the Union of Comoros (IOTC and COI-SmartFish Project joint activity).
  - d) Support to the data collection and processing systems for the fisheries of Sri Lanka (IOTC-OFCF and IOTC-BOBLME joint activities), including assistance in a review of the sampling design, and support to the strengthening of data collection and management activities.
  - e) Support to the implementation of a Pilot Project to assess the importance of catches of IOTC species and sharks in Madagascar, including monitoring of traditional, artisanal, and semi-industrial fisheries operated in different locations along the coast of Madagascar (IOTC and COI-SmartFish Project joint activity).
  - f) Support to an evaluation of data collection and processing systems for the small-scale fisheries of Mauritius (IOTC-OFCF Project) and Seychelles (IOTC).
  - g) Data mining for the coastal purse seine fisheries of Malaysia, to assess the use of catch-and-effort data from this fishery in the estimation of abundance indices for species of neritic tunas (IOTC-OFCF Project, January 2014).
22. A new Memorandum of Understanding (MOU) between the IOTC and the OFCF was signed in June 2013, focusing on strengthening statistical systems for tuna fisheries, including the provision of funds and detachment of an OFCF Expert to the IOTC Secretariat to coordinate the activities of the Project. The duration of Phase IV of the Project is three years, until March 2016, with funds committed for each year and extension of the Project agreed through exchange of letters between the IOTC and the OFCF. The fisheries of Indonesia and Thailand will be the focus of activities during the first year of Phase IV of the Project.

#### **4.2.3 Data-related activities – Other**

23. Since early 2011 the IOTC Secretariat has been responsible for the coordination of activities concerning the global Consolidated List of Authorized Vessels (CLAV), a regularly updated list including the authorized vessels of the five t-RFMOs. Collaboration between the IOTC Secretariat and FAO-FIDI continued in 2013 and testing of the new CLAV software is currently under way. In 2014, the CLAV will be further enhanced using funds from a Global Environmental Facility Project on Sustainable Management of Tuna Fisheries and Biodiversity: Conservation in the Areas Beyond National Jurisdiction (ABNJ). The main objective of the CLAV component of the Project is ensuring that updates of the CLAV occur in as close-to real time as possible.
24. In August-October 2013 the IOTC Secretariat hired the services of a Fisheries Expert, to assist the IOTC Secretariat in a review and update of levels of input fishing capacity, in terms of numbers of active fishing vessels, in the Indian Ocean. The results of this work are presented in a separate document ([IOTC-2013-SC16-19](#)). The IOTC Secretariat updated the estimates of numbers of fishing vessels (fishing craft statistics) using the new information published.
25. In 2012 the IOTC Secretariat and the Project COI-SMARTFISH agreed to initiate cooperation in the implementation of capacity building activities in coastal countries of the Southwest Indian Ocean, in the areas of MCS and data collection. The Project initiated activities in 2013, as indicated in the previous section.
26. In 2013 the IOTC Secretariat in consultation with the Overseas Fisheries Development Council of Taiwan,China (OFDC), conducted a review of the size-frequency data available for the Taiwan,China longline vessels to bring attention to recent, and sudden, increases in the average lengths of specimens sampled for lengths, as well as the general lack of coherence with catch-and-effort data. As a direct result, a workshop to review the size-frequency data collected by the main Asian longline fleets is planned for later in 2014.

#### **4.3 Stock assessment**

27. Following the recommendation of the Working Party on Tropical Tunas in 2012, which was endorsed by the Scientific Committee at its 15<sup>th</sup> Session, a Stock Assessment consultant (Dr. Adam Langley) was hired again to conduct stock assessment analyses on bigeye tuna in 2013.
28. The Fisheries Officer (Stock Assessment) assisted in the coordination of Working Party activities for the main IOTC species (WPNT, WPEB, WPB, WPTT), contributing a number of supporting analyses. The IOTC Secretariat presented a total of five papers as primary authors. Two papers were presented at the WPNT. They focussed on data poor approaches to stock assessments and were tested on kawakawa and longtail tuna (IOTC-2013-WPNT03-25). In addition, a third paper on new CPUE series were developed on Maldivian baitboat data for kawakawa and a traditional method for stock assessment was applied to that (IOTC-2013-WPNT03-23 and 24). At WPB, a paper was presented on data poor approaches to marlins, and tested with swordfish (IOTC-2013-WPNT03-28). The IOTC Secretariat in collaboration with other CPC's scientists presented an additional paper at IOTC-2013-WPTT15-32 on skipjack tuna CPUE standardisation for the Maldivian pole-and-line fishery. In addition, in collaboration with other scientists, 5 papers were presented as secondary authors (IOTC-2013-WPNT03-25; IOTC-2013-WPB11-32, IOTC-2013-WPTT15-30, IOTC-2013-WPTT15-32, IOTC-2013-



WPTT15-33). The secretariat also coordinated and was the lead in finalising a report on CPUE Standardisations (Report [IOTC-2013-CPUEWS01-R](#)).

29. An analysis of the recent history of the assessments considered at the Working Parties in the past four years, reveals the value of a mixed approach in which contributions from scientists from CPCs (19) are supplemented by contributions from the IOTC Secretariat (six and collaboration in another seven), consultants (four) or external invited experts (eleven assessments). In particular, given that national scientists usually have a limited time allotted to analyses for IOTC stocks every year due to their other commitments, having stock assessment expertise at the IOTC Secretariat guarantees that there is full time attention given to the assessment work during most of the year, in addition to the training and support given through collaborative work with national scientists.
30. In addition, the first CPUE workshop was facilitated by the IOTC Secretariat in dealing with issues of standardisation of indices of abundance, and how to resolve them. A total of 24 people participated from 15 countries over two days on 21-22 October 2013. A number of issues were identified that the CPC's agreed to resolve inter-sessionally. Details can be found in Report [IOTC-2013-CPUEWS-01](#).
31. The IOTC Stock Assessment staff worked with experts from NOAA (Dr. Jim Ianelli), and CSIRO (Dr. Dale Kolody) in training individuals/capacity building on stock assessment in 2013 at an extended workshop in Bangkok, Thailand in May 2013. Eight individuals from eight Indian Ocean countries (India, Indonesia, Sri Lanka, Malaysia, Thailand, Maldives and 2 that were not members, Bangladesh and Myanmar) attended this workshop that was held along with BOBLME. Similar workshops are targeted for other parts of the Indian Ocean in 2014 (Western Indian Ocean and North Arabian Seas).
32. The IOTC Secretariat assisted and developed some of the models used in the MSE process to deal with Resolution 12/14 superseded by Resolution 13/10. A small sub-group of the Methods Working group developed Operating Models for Albacore and Skipjack and the framework to evaluate reference points. These products were presented at the SC, and will be pursued in 2014 and 2015 as well. In addition MSE Capacity building initiatives were started at the BOBLME funded stock assessment workshop conducted in Bangkok in 2013, and will be continued in 2014 with ABNJ-GEF funding as well as funding from the EU and Australia.
33. The IOTC Secretariat participated as experts in an MSE Workshop on Harvest Control Rules conducted by ISSF with experts on the topic from all other RFMO's and experts globally. IOTC based approaches were favourably accepted and IATTC, and ICCAT were proposing using the similar interim reference points adopted by IOTC.
34. The IOTC Secretariat IOTC Stock assessment staff also presented some new research on Indian Ocean Tuna stocks (bigeye tuna) at the centre for advancement of population assessment and models that was well accepted and published in a special issue of an international acclaimed journal, Fisheries Research. In addition IOTC Secretariat was invited to present some of the data poor approaches in the world conference on Stock Assessment in Boston, USA.

#### **4.4 Science: other**

35. The Secretariat facilitated two technical workshops for the implementation of measures to reduce seabird bycatch in IOTC longline fisheries in 2013 ([Table 3](#)). The workshops had the following three primary objectives: To provide training and demonstrations of practical options for longline fishing vessels to become compliant with IOTC Resolution 12/06, which will come into force on 1 July 2014. Specifically the workshops presented the three seabird bycatch mitigation measures (bird scaring lines, line weighting options and night setting) to fishery managers and key personnel from IOTC CPCs. The intention was that the participants would be provided with the necessary tools (including Fact Sheets, technical specifications, etc.) to assist national fleets to implement the two-out-of-three mitigation measures appropriately and to discuss safety and other practical concerns that may be raised in relation to implementation of the seabird bycatch mitigation measure requirements. The workshops also highlighted the data collection and reporting obligations relevant to longline fishing in the Southern Ocean, to improve the IOTC's capacity to understand and manage fishing impacts on seabirds.

**Table 3.** Science and data capacity building activities carried out in 2013.

Country	Date	Staff	Description
Indonesia, Thailand	Various	OFCF Project Manager	OFCF Administrative arrangements and evaluation of financial reports
Maldives	2–6 Feb.	IOTC Fishery Officer (Stock Assessment)	CPUE Standardization (Data and Analysis with MRC)
Comoros & Madagascar	10–18 Feb.	IOTC Data Coordinator	Identification of local consultants to execute activities under the IOC-SmartFish
Sri Lanka	Various	IOTC Data Coordinator	Database training (Pelagos)
India, Sri Lanka, Maldives, Thailand, Indonesia, Malaysia	24–28 May	IOTC Fishery Officer (Stock Assessment)	Capacity Building Stock Assessment Expert
Indonesia	20–26 Jun.	IOTC Data Coordinator	Albacore Catch Estimation Workshop
Indonesia	8–9 Jul.	IOTC Deputy Secretary	1 <sup>st</sup> Technical Workshop for the implementation of measures to reduce seabird bycatch in IOTC longline fisheries
EU, Spain	21–22 Oct.	IOTC Fishery Officer (Stock Assessment)	CPUE Standardization workshop
Seychelles	5–15 Nov.	Consultant	Evaluation fisheries statistical system of Seychelles (small-scale fisheries)
Indonesia	20 Nov.– 20 Dec.	Consultant	Evaluation Data collection and processing systems longline fishery Indonesia
Rep. of Korea	29–30 Nov.	IOTC Deputy Secretary	2 <sup>nd</sup> Technical Workshop for the implementation of measures to reduce seabird bycatch in IOTC longline fisheries

#### 4.5 Identification cards – sharks, seabirds, marine turtles, and billfish

36. Following recommendations from the Working Party on Ecosystem and Bycatch and the Scientific Committee to develop identification cards for sharks, marine turtles and seabirds, the Secretariat has developed, finalized and printed the identifications cards for sharks, seabirds, marine turtles and billfish, thanks to the help of the following experts:

- a) **Sharks** – Chairman of the WPEB, Dr. Chares Anderson and Vice-Chair Dr. Evgeny Romanov. These identification cards are developed with sharks and rays illustrations by Roger Swainston and from a collaborative work from the Institut de recherche pour le développement (IRD) and the French National Natural History Museum (MNHN).
- b) **Seabirds** – Birdlife International – Dr. Ross Wanless, from the Secretariat of the Agreement on the Conservation of Albatrosses and Petrels – Mr. Barry Baker and from the Royal Society for the Protection of Birds – Ms. Cleo Small. These identification cards were developed with seabird drawings given by Random House Struik, which has the copyright on the illustrations.
- c) **Marine turtles** –IOASEA MoU - Mr. Douglas Hyke and his team, from IFREMER La Réunion – Mr. Jérôme Bourjea, and from KELONIA – Mr. Stephane Ciccione.
- d) **Billfish** – IFREMER – Mr. Hughes Evano, ARDA – Dr. Evgeny Romanov
- e) **Tunas** – The Commission approved the development of ID cards for tunas and mackerels under the IOTC mandate. A consultant was hired and with the assistance of the IOTC Secretariat, finalised the cards in late December 2013. The cards are distributed to the primary intended users: scientific observers under the framework of the IOTC Regional Observer Scheme, however they have also been distributed and used by fishers in order to record and report interactions with sharks, marine turtles and seabirds. The identification cards were produced in both English and French.

## 5. SUPPORT TO COMPLIANCE ACTIVITIES

37. The compliance-related activities continue to expand and represent a load comparable to the support of scientific activities, as the Commission has expanded its reporting requirements with the adoption of new resolutions. The Secretariat has continued to devote a significant portion of time in 2013 to provide support to CPCs to meet their obligations to the Commission, including conducting compliance support missions to some of the Member countries.

38. The requirement for support by the Compliance Committee was much larger this year following the strengthening of the Compliance Committee. This required the submission of compliance questionnaires, according to the requirements of the Commission, to all CPCs, and the processing of the responses, and the information available from national reports, into Country Reports to be presented at the 11<sup>th</sup> Session of the Compliance Committee. This

has resulted in a total of almost 70 documents to process for the Compliance Committee, with a measurable increase in the workload of the Secretariat.

39. Data revisions related to updates in the IOTC Record of Authorised Vessels have increased significantly and often required special attention from the Secretariat to ensure the correctness of the Record of Authorised Vessels. Other data submissions, such as the scientific data to be utilized in stock assessments, continue to require considerable processing and validation before they are integrated into the IOTC databases. This processing phase, in most cases, is a major task of the Secretariat as it often leads to several requests for clarifications from data liaison officers.
40. The maintenance of an IOTC Record of Active Vessels, so far a unique record amongst the tuna regional fishery bodies, requires also active involvement of the staff of the Secretariat, as submissions from various parties often reveal discrepancies and inconsistencies that the staff attempts to resolve through contacts with the various parties involved.
41. The Secretariat also continued with the coordination of the implementations of the Regional Observer Programme to monitor transshipment at sea for large-scale tuna longline vessels. With greater focus being placed on using the data from this Programme to identify possible infractions, the Secretariat now have to identify and point out possible infractions to the fleets participating in the Programme. The Secretariat has also this year, through the FAO, extended the contract for executing the work foreseen in the Programme. More details on this activity (fully supported by the contributions of the participants in the programme) are reported directly to the Compliance Committee. A review meeting with representatives of the Consortium and the fleets participating in the Programme is expected to take place in the margins of the 11<sup>th</sup> Session of the Compliance Committee, in May 2014, to discuss matters pertaining to implementation of the Programme.
42. At its 16<sup>th</sup> Session, the Commission adopted the Resolution 12/10 to promote implementation of conservation and management measures already adopted by the IOTC. The Resolution states that *“The Commission shall establish a special fund for capacity building in order to ensure compliance with Conservation and Management Measures. This special fund shall be financed by voluntary contributions. The Secretariat shall contact international organizations, donor agencies and nongovernmental organizations to seek voluntary financial contribution”*.
43. Since the adoption of the Resolution 12/10, the IOTC Secretariat has developed project concept notes and has received financial support or cooperative arrangements, in order to undertake several compliance support missions and training in the implementation of the IOTC port State measures resolution (Resolution 10/11).

#### **5.1 Capacity building activities: Compliance Support Missions**

44. The main concept in the capacity building efforts is that of Compliance Support Missions (CSM), that are intended to bring the work of the Commission and the Compliance Committee closer to the CPCs. The CSM are a combination of capacity building and planning exercise to engage in activities that would support the issues that were identified during the review of country based Compliance Report at the last session of the Compliance Committee.
45. The CSMs are carried by the Secretariat (Compliance Section) over a period of approximately one week, to an audience composed of national officers in offices involved in the implementation of IOTC Resolutions. The structure of a CSM includes the following components:
  - a) A short, one-day workshop with the objective of increasing the understanding of the structure of the IOTC, process and the functioning of its subsidiary bodies. In particular, how, on the basis of scientific advice on the status of the stocks, joint actions are proposed, debated by the CPCs, and eventually translated into agreements for actions, if there is enough support amongst Members. The role of compliance in ensuring the effectiveness of the actions will be highlighted.
  - b) A second section is focused on presenting the main obligations embedded in the body of Resolutions adopted by the IOTC Members. The objective is to present the audience with a narrative of the nature and extent of the conservation and management measures adopted, to facilitate the understanding of the overall principles and objectives embodied in the measures.
  - c) A third section of the mission is devoted to review in detail with government officials those conservation and management measures that are particularly relevant to the country, and discuss, as appropriate, the challenges that they are facing at the time of implementing those actions.
  - d) The final activity is to collaborate with the concerned CPC in the formulation of a plan for strengthening compliance, including a list of directed actions, national institutions that will be responsible, as well as timelines for the implementation of these actions. This stage could also be served as a tool to identify areas where the CPC might require additional assistance in overcoming particularly difficult challenges.



46. A report on the outcome of these collaborative actions in points c and d may be presented by the CPC to the Compliance Committee, establishing a baseline from which to measure progress in the strengthening of compliance.
47. To date, seven CSM have been successfully conducted in the following countries: Indonesia, Kenya, Madagascar, Mauritius, Mozambique, Oman, Sri Lanka and Tanzania. Further missions are planned for other countries during 2014.

### ***5.2 Capacity building activities: Training in Port State Measures Resolution***

48. The other component is specific to the implementation of Resolution 10/11 on Port State Measures to prevent, deter and eliminate illegal, unreported and unregulated (IUU) fishing. This training is primarily intended for field personnel and their supervisors, as it focuses more in the operational aspects of the Resolution on Port State Measures.
- a) Implement at national level, a training course for government officials on IOTC Port State Measures for CPCs in the region
  - b) Develop an information system on port States Measures to facilitate the sharing of information as required by the Resolution 10/11.
49. Two regional training workshops on the implementation of IOTC Resolutions were conducted. The first workshop was held in Mauritius and co-financed by the ACP Fish II Programme, and the second was held in Malaysia and co-financed by the Bay of Bengal Large Marine Ecosystem (BOBLME).
50. To support those activities, two training packages were developed with the assistance of Mr Gilles Hosch, and the firm Capfish cc, acting as consultants. One relates to the implementation of the IOTC Conservation and Management Measures and the second relates to the implementation of Port State Measures to prevent, deter and eliminate illegal, unreported and unregulated (IUU).

### ***5.3 Funding of these activities***

51. Funding for these activities are being provided through cooperation with several initiatives following presentation of the capacity building initiatives to potential financing agencies. The Secretariat has:
- a) signed a Grant Agreement with the European Union for the provision of 80.000 € to finance the development of the two training packages and Compliance Support Missions (1 August 2012 – 31 July 2013),
  - b) received financing from the following agencies/projects:
    - Indian Ocean Commission’s SmartFish Programme, financed under the 10th European Development Fund) (financing to undertake, in qualifying countries, Compliance Support Missions and National PSM training courses),
    - World Bank Project (under Global Partnership for Oceans) through the Indian Ocean Commission (financing to undertake, in qualifying countries, Compliance Support Missions, to develop the PSM information Sharing System and to develop template for fisheries legislation),
    - ACP Fish II Project (financing to undertake a Regional CMMs training course),
    - Bay of Bengal Large Marine Ecosystem (BOBLME) (financing to undertake a Regional CMMs training course)
    - The FAO Project “Sustainable management of tuna fisheries and biodiversity conservation in the Areas Beyond National Jurisdiction (ABNJ)” supported by the Global Environmental Facility (GEF), (on further development of CLAV, template for national PSM legislations, various capacity building activities, although these activities will start in 2014,
    - WWF (has supported the production of material for the port inspector’s kit).
52. The participation of the Compliance Coordinator and the Compliance Officer in a number of meetings has allowed better coordination with other efforts related to Monitoring Control and Surveillance in the IOTC Area. These include meetings such as the Steering Committee for the IOC-SmartFish and the ACP FISH II Programmes.
53. The Compliance Section continues to also participate actively in the pilot project Fish-I Africa, a partnership between Comoros, Kenya, Mozambique, Seychelles and Tanzania, supported by the Pew Charitable Trust. It connects partners on a real-time basis to share information and intelligence to enable them to make decisions and take action against suspected illegal operators.
54. [Table 4](#) summarises all the missions relating to compliance.

**Table 4. Missions relating to Compliance Activities in 2013**

Country	Date	Staff	Description
Sri Lanka	04–15 Feb.	Compliance Coordinator/ Compliance Officer	Compliance Support Mission & PSM training course
Indonesia	25 Feb. – 08 Mar.	Compliance Coordinator/ Compliance Officer	Compliance Support Mission & PSM training course
Madagascar	24 Jun. – 5 Jul.	Compliance Coordinator/ Compliance Officer	Compliance Support Mission & PSM training course
Comoros	1–5 Jul.	Compliance Officer	PSM training course
Mozambique	22 Jul. – 2 Aug.	Compliance Coordinator/Compliance Officer	Compliance Support Mission & PSM training course
Tanzania	5–16 Aug.	Compliance Coordinator/Compliance Officer	Compliance Support Mission & PSM training course
Oman	15–26 Sept.	Compliance Coordinator/Compliance Officer	Compliance Support Mission & PSM training course
Seychelles	7–11 Oct.	Compliance Officer	PSM training course
Mauritius	22 Oct.– 5 Nov.	Compliance Coordinator/Compliance Officer	Compliance Support Mission & PSM training course
Kenya	25 Nov. – 6 Dec.	Compliance Coordinator/Compliance Officer	Compliance Support Mission & PSM training course
Mauritius	27–30 Aug.	Executive Secretary/Compliance Coordinator/ Compliance Officer	Regional workshop to support the implementation of the Resolutions of the Indian Ocean Tuna Commission

## 6. COMMUNICATIONS AND PUBLIC INFORMATION

### 6.1 Documents (papers and reports)

55. The Secretariat continues with the publications of all reports of the Commission and its subsidiary bodies (Working Parties and Committees). All reports are currently published in electronic format only, following the decision by the Commission at its 17<sup>th</sup> Session to go paperless.
56. In 2013, the Secretariat produced 60 papers/reports (Appendix III) in support of the IOTC Science process, not including the reports of the various working parties (6) or the Executive Summaries (25). In addition, a further 44 papers/reports were developed in support of the other IOTC bodies (Commission, Compliance Committee, Standing Committee on Administration and Finance).
57. Once again, it was not possible to complete the production of a Data Summary due to the elevated workload for the relevant sections of the IOTC Secretariat.

### 6.2 IOTC e-News

58. In early 2013, the Secretariat continued the publication of the IOTC e-News, however due to the increased efforts to complete the IOTC website, the newsletter was temporarily halted. The newsletter, which is now a part of the new website, is aimed at reaching out and keeping CPCs and other interested parties informed about what is being done to ensure the sustainability of fisheries by IOTC CPCs, and about the support work provided by the IOTC Secretariat. Another aim is to provide readers with more information about how science, management and compliance combine to maintain the delicate balance that is required to ensure the long-term sustainable utilisation of such important renewable resources. In addition, the successes, the failures and the evolution of this process, as well as the many challenges posed by a joint management process were and will continue to be shared via the e-News.

### 6.3 IOTC Website

59. The IOTC website continues to be a portal for communicating science related information to a variety of audiences. The Secretariat has completed the development of a new website, as requested by the Commission and came online in March 2014.
60. With the support of the ACP Fish II Project, a consultant, Mr Stefano Piredda, developed a website application that would allow users for a faster and more comprehensive search facility of the collection of Conservation and Management Measures of IOTC (July–August 2012), which is now part of the website: <http://www.iotc.org/cmms/basic>.

## 7. SUPPORT TO MEETINGS

### 7.1 Meeting Participation Fund

61. The IOTC Meeting Participation Fund (MPF) was established during the 14<sup>th</sup> Session of the Commission (2010), held in Busan, Republic of Korea, through Resolution 10/05 on the establishment of a meeting participation fund for developing IOTC Members and Non-contracting Cooperating Parties (CPCs). The main goal of the MPF is to increase the participation of developing CPCs to scientific meetings of IOTC, and in line with paragraph 6 of Resolution 10/05, applications to the MPF are only eligible if the applicant intends to produce and present a working paper relevant to the working party that he/she wishes to attend, or a CPC National Report if the meeting

is the SC. Specifically, the MPF was established for the purposes of supporting scientists and representatives from IOTC Contracting Parties and Cooperating Non-Contracting Parties (CPCs) who are developing States to attend and/or contribute to the work of the Commission, the Scientific Committee and its Working Parties.

62. The MPF was initially financed by an allocation of USD\$200,000 from IOTC's accumulated funds in 2010 and was to be maintained in the future through sources to be identified by the Commission. The Fund was replenished in 2011, 2012 and 2013 by the Commission, to compensate for the expenditures, again through the IOTC 'accumulated funds'. In addition, Australia contributed US\$69,492 in 2012 and US\$75,405 in 2013 to defray costs of participation of coastal states at the 16<sup>th</sup> and 17<sup>th</sup> Sessions of the Commission. The MPF has served to increase substantially the level of participation of developing coastal states to IOTC meetings. However, the long-term sustainability of the MPF is still a concern as a procedure to replenish the fund is yet to be determined by the Commission.
63. There was a continued increase in attendance by national scientists from developing CPCs to IOTC Working Parties and the SC in 2013 (58 in 2013; 42 in 2012; 33 in 2011; 19 in 2010: [Table 1](#)), which was largely due to the IOTC MPF.
64. In 2013, 2012 and 2011 all MPF recipients developed and presented at least one working paper or National Report, relevant to the meeting in which the Commission funded their attendance. The papers presented to IOTC meetings by MPF recipients have continued to improve in quality as a direct result of improved attendance and participation by scientists from developing coastal states.
65. As a secondary priority, Resolution 10/05 indicates that the MPF should be used to fund the participation of one representative per developing CPC to a non-scientific meeting of the Commission, including regular Sessions, if the CPC intends to present reports relevant to the meeting in question, and provided that the CPC is not eligible for support under the fund established under part VII of the UNFSA. In 2013 the Secretariat facilitated the participation of over 30 individuals from 15 developing CPCs of IOTC to the non-scientific meetings, as detailed in [Table 5](#).

**Table 5.** Participants of non-scientific meetings supported by the MPF in 2013, with 2012 participant numbers presented for comparison.

Meeting	Date and place	2012	2013
Technical Committee on Allocation Criteria	18–20 February, Oman	10	20
Compliance Committee	2–4 May, Mauritius	15	13
Standing Committee on Administration and Finance	8–10 May, Mauritius	14	12
Session of the Commission	6–10 May, Mauritius	14	13

## 7.2 Logistic support in the facilitation of meetings

66. The Secretariat worked with several translators in 2013 for the provision of translation services, and preparation of documents in both languages of the Commission for the Sessions of the Commission, Compliance Committee, Standing Committee on Administration and Finance, the Scientific Committee and all IOTC Circulars and supporting information. In order to reduce staff costs, the translation of documents to the official languages of the Commission (English and French) has been outsourced as necessary. Unless there is a substantial increase in the workload relating to translation, the current approach is an effective way of proceeding under the current budget limits.
67. The Secretariat has been liaising with local institutions, hotels, service providers, tour operators for the organization working parties and other IOTC meetings in 2013, which were held in five different countries in addition to Seychelles.

## 7.3 Preparation of reports

68. The Secretariat staff provided the necessary support to all IOTC meetings in 2013 related to the development and dissemination of meeting reports. In 2013, all IOTC meeting reports were developed, finalised and disseminated efficiently and in a short timeframe to ensure CPCs had access to the most recent meeting findings and recommendations soon after the completion of a meeting (usually within one week).

## 8. INFORMATION TECHNOLOGY

69. The provision of computer infrastructure, including maintenance of the network and servers, as well as Internet support was providing by a consultant paid under the provisions of Headquarters Agreement with the Republic of Seychelles. These services were also extended to general meeting support and website maintenance.

## 9. ADMINISTRATION

70. The personnel and financial administration of the IOTC is managed through the FAO ERP system called the GRMS. This includes the administration of extra-budgetary funds, travel arrangements, general logistical support to the activities of the technical sections, as discussed in detail in SCAF11 papers 03 and 05.

## 10. PROGRESS ON RECOMMENDATIONS FROM SCAF10

71. At the 10<sup>th</sup> Session of the SCAF in 2013, CPCs agreed on a series of actions to be taken by CPCs and the Secretariat on a range of issues. The subsequent table developed and agreed to by the SCAF10 was provided to the Commission at its 17<sup>th</sup> Session for its endorsement. Provided at Appendix IV is an update on the progress made in implementing the recommendations from the previous SCAF meeting, which were endorsed by the Commission (S17).

## 11. OTHER ACTIVITIES

### 11.1 *Contacts with other organisations*

72. The Secretariat routinely maintains contacts with other organisations in the region with the purpose of coordinating scientific activities to the extent possible. This is essential to avoid duplication of efforts with similar organisations. The Executive Secretary and Deputy Secretary maintain regular contacts with the other tuna RFMOs (CCSBT, IATTC, ICCAT, and WCPFC), although in 2013, did not participate in the meetings of the other tuna RFMOs due to budgetary constraints.

73. As mentioned above, the Secretariat maintains close links with the Indian Ocean Commission (IOC) primarily through the discussions of possible future coordination and cooperation in fisheries projects involving tuna fisheries. The Secretariat is currently involved in a number of joint activities with the IOC Project Integrated Regional Fisheries Strategy (IRFS) also known as SmartFish, mostly on Compliance issues, but it is expected that there will be collaboration on data-collection activities between the IRFS and IOTC.

74. The Secretariat, together with the Secretariats of the tuna RFMOs, continued to cooperate with FAO during 2013 in the formulation of the project “Sustainable management of tuna fisheries and biodiversity conservation in the Areas Beyond National Jurisdiction (ABNJ)” supported by the Global Environmental Facility (GEF), with the following objectives: To achieve efficiency and sustainability in tuna production and biodiversity conservation in the ABNJ, through the systematic application of an ecosystem approach in tuna fisheries for : (i) supporting the use of sustainable and efficient fisheries management and fishing practices by the stakeholders of the tuna resources, (ii) reducing illegal, unreported and unregulated [IUU] fishing, and (iii) mitigating adverse impacts of bycatch on biodiversity. The execution of the project has been delayed until March 2014.

75. The Southwest Indian Ocean Fishery Commission (SWIOFC) is an advisory body under the FAO umbrella that deals with non-tuna species in the EEZ of the member countries. The SWIOFC does have not a mandate to manage tuna fisheries but contribute actively to the work of IOTC and assist in its management actions, so coordination is essential. To the extent possible the Secretariat attends the meetings of the organization such as the Scientific Committee and the recently set up Working Party on Collaboration and Cooperation in Tuna Fisheries.

76. The Secretariat was invited to participate in Indonesian Tuna Business Forum (27-29 May 2013) co-organised by the Ministry for Regional Development (KPDT), the Ministry of Marine Resources, Indonesia and International Pole and Line Foundation (IPNLF). The Secretariat gave a presentation on the IOTC process and capacity building work in Indonesia.

77. The Secretariat continues its coordination with various intergovernmental and non-governmental organisations interested in the activities of the Commission, including:

- The **Indian Ocean Sea Turtle Memorandum of Understanding**, an intergovernmental organization for the protection of sea turtles;
- **BirdLife International** which, together with the Secretariat, implements capacity building activities on sea birds mitigation in longline fisheries;
- **World Wild Fund for Nature**. Cooperation in various issues but more focus on compliance issues (Port state measures training);

- 
- **International Sustainability Seafood Foundation:** Cooperation on MSE, CPUE standardization, fishing capacity and other activities across Tuna RFMOs;
  - **Agreement on the Conservation of Albatrosses and Petrels:** working with ACAP a multilateral agreement to coordinate international activity to mitigate threats to albatross and petrel populations,
  - **Bay of Bengal – Large Marine Ecosystems (BOBLME) programme,** executed by FAO, on technical matters such as the strengthening of data collection systems in countries from the eastern Indian Ocean, and status assessment for species of interest to IOTC, such as shark.

**APPENDIX I**  
**2013 PROGRAMME OF WORK**

**Capacity building activities proposed by the Scientific Committee for the year 2013 and approved by S17**

<b>Source</b>	<b>Objective/ Recommendation</b>	<b>Progress</b>
SC Recommendation SC15.17:	The SC <b>RECOMMENDED</b> that the Commission allocate funds to carry out training for CPCs having gillnet fleets on species identification, bycatch mitigation and data collection methods and also to identify other potential sources of assistance to carry out such activities.	<b>Pending:</b> Funding identified under the GEF-FAO ABNJ project and IOTC budget 2014/15
SC Recommendation SC15.32:	The SC <b>RECOMMENDED</b> that the IOTC Secretariat coordinate the development and delivery of several training workshops focused on providing assistance to developing CPCs to better understand the MSE process, including how reference points and harvest control rules are likely to function in an IOTC context. The SC <b>REQUESTED</b> that the Commission's budget incorporate appropriate funds for this purpose.  Stock Assessment workshops Eastern IO - Training workshops focused on providing assistance to developing CPCs to better understand the MSE process, including how reference points and harvest control rules are likely to function in an IOTC context.	<b>Partially completed and ongoing:</b> Funds earmarked from COI- SmartFish Project and work to start in 2014 for 2 years.  <b>Completed:</b> Stock Assessment Workshop conducted in May 2013 and additional training activities will be carried out in 2014.
SC Recommendation SC15.46:	<b>NOTING</b> the combined recommendations from the WPB, WPTmT and WPTT to hold a dedicated workshop on CPUE standardisation, the SC <b>RECOMMENDED</b> that a dedicated, informal workshop on CPUE standardisation, including issues of interest for other IOTC species, should be carried out before the next round of stock assessments in 2013. The IOTC Secretariat shall include a budget item for this workshop, for the consideration of the Commission.	<b>Completed:</b> Dedicated CPUE workshop held in EU, Spain (21–22 October)



---

**Consultancies for the year 2013**


---

Source	Objective/ Recommendation	Progress
Resolution 12/06, para. 9 <b>High priority</b>	<b>Seabirds</b> – Para. 9 of Res 12/06: The Commission should hold a workshop in the intersessional period before the entry into force of this Resolution to facilitate its implementation, particularly focusing on how to address safety and practical concerns. CPCs shall ensure that fishers make a trial of the safety and practicality of these measures for review at the workshops with a view of resolving their concerns and assuring the orderly implementation, including training for and adaptation to these measures. A second workshop should be held, if necessary to explain the science, theory and application of the line weighting measure.	<b>Completed:</b> Two workshops were held in 2013: 1) Bali, Indonesia (8–9 July); 2) Busan, Rep. of Korea (29–30 December).  In addition, Birdlife International held a third workshop in Taiwan,China in mid-November.
SC Recommendation SC15.16:	<b>Gillnets</b> – The SC <b>RECOMMENDED</b> that the Commission considers allocating funds to support a regional review of the data available for gillnet fleets operating in the Indian Ocean. The scientists from all CPCs having gillnet fleets in the Indian Ocean should provide at the next session of the WPEB, a report summarising the known information on bycatch in their gillnet fisheries, including sharks, marine turtles and marine mammals, with estimates of their likely order of magnitude where more detailed data are not available.	<b>Pending:</b> Funding identified under the GEF-FAO ABNJ Tuna project and IOTC budget 2014/15
SC Recommendation SC15.19:	<b>Sharks</b> – <b>NOTING</b> that there is extensive literature available on pelagic shark fisheries and interactions with fisheries targeting tuna and tuna-like species, in countries having fisheries for sharks, and in the databases of governmental or non-governmental organisations, the SC <b>AGREED</b> on the need for a major data mining exercise in order to compile data from as many sources as possible and attempt to rebuild historical catch series of the most commonly caught shark species. In this regard, the SC <b>RECOMMENDED</b> that the Commission allocates funds for this activity, in the 2013 IOTC budget.	<b>Pending:</b> Not yet implemented. Funding source to be identified.
SC Recommendation SC15.30: <b>High priority</b>	<b>Marine turtles</b> – The SC <b>RECOMMENDED</b> that the IOTC Secretariat include an additional 20 day consultancy in the 2013 IOTC budget for the Commission’s consideration, so that the Ecological Risk Assessment for marine turtles may be continued and that new information received may be incorporated.	<b>Completed:</b> The Marine Turtle ERA was updated and provided to the WPEB.

Source	Objective/ Recommendation	Progress
SC Recommendation SC15.33: <b>High priority</b>	<p><b>Management Strategy Evaluation</b> – The SC <b>RECOMMENDED</b> that the Commission allocate funds in the 2013 and 2014 IOTC budgets, for an external expert on MSE to be hired for 30 days per year, to supplement the skill set available within IOTC CPCs, and for the establishment of a participation fund to cover the planned WPM workshops.</p> <p>The SC <b>ENDORSED</b> the workplan for the development of the IOTC MSE process, provided at Appendix IV. [of the WPM04 Report]</p>	<b>Pending:</b> Budget identified in 2014 and also funds earmarked under the GEF-FAO ABNJ Tuna Project.
SC Recommendation SC15.34:	<p><b>Comparative analysis</b> – The SC <b>AGREED</b> that a comparative analysis on the Multifan-CL / SS3 assessments in both the Indian Ocean and East Pacific Ocean should be performed by a small group of experts (at least the IOTC consultant and the IATTC expert) working jointly. The objective of this comparative work is to understand why the biomass estimated by the models differ by a ratio 1:10 when many parameters driving the assessment are very similar, i.e. spatial extent of the fishery, estimated MSY, size range of fish caught and growth pattern. One of the aims would be to understand why such differences exist in order to revisit some of the basic assumptions of the models. Therefore, the SC <b>RECOMMENDED</b> that the Commission consider funding this proposed work which would need to cover one consultant airfare (up to US\$6,000), DSA (up to US\$350 per day – 7 days), plus an FAO consultancy rate of US\$450 per day (7 days). The total amount requested for this comparative study is US\$11,600) per consultant.</p>	<b>Withdrawn:</b> The Commission did not agree to fund this project.
SC Recommendation SC15.35: <b>High priority</b>	<p><b>Stock assessments</b> – The SC <b>NOTED</b> the excellent work done by Mr. Adam Langley (consultant) and his contributions and expertise on integrated stock assessment models, and <b>RECOMMENDED</b> that his engagement be renewed for the coming year.</p>	<b>Completed:</b> The consultant delivered a stock assessment for bigeye tuna which was considered at the WPTT.
SC Recommendation SC15.37:	<p><b>Monofilament gillnets</b> – <b>NOTING</b> that monofilament gillnets are recognised to have highly detrimental impacts on fishery ecosystems, as they are non-selective, and that the use of monofilament gillnets have already been banned in a large number of IOTC CPCs, the SC <b>RECOMMENDED</b> that the IOTC Secretariat facilitate a review of the use of monofilament gillnets by IOTC CPCs to i) determine the number of CPCs using them, ii) estimate total catch and bycatch, etc., taken by monofilament gillnets in comparison to other net material, and iii) to report the findings at the next WPNT meeting.</p>	<b>Withdrawn:</b> The Commission did not agree to fund this project in 2013.

Source	Objective/ Recommendation	Progress
SC Recommendation SC15.43: <b>High priority</b>	<b>Tuna identification cards</b> – The SC <b>RECOMMENDED</b> that the Commission allocate funds in the 2013 budget to develop and print sets of identification cards for the three tropical tuna, two temperate tuna, and six neritic tuna and seerfish species under the IOTC mandate, noting that the total estimated production and printing costs for the first 1000 sets of the identification cards is around a maximum of US\$16,200. The IOTC Secretariat shall seek funds from potential donors to print additional sets of the identification cards at US\$5,500 per 1000 sets of cards. [ <i>Note: 9,200 for publication budget line, 7,000 for consultancy budget line.</i> ]	<b>Completed:</b> The cards were produced by a consultant and are currently being distributed.
SC Recommendation SC15.44:	<b>Hook identification cards</b> – <b>NOTING</b> the continued confusion in the terminology of various hook types being used in IOTC fisheries, (e.g. tuna hook vs. J-hook; definition of a circle hook), the SC <b>RECOMMENDED</b> that the IOTC Secretariat develop an identification guide for hooks and pelagic gears used in IOTC fisheries, as staffing and financial resources permit, and to distribute the guide to all CPCs once completed. The SC also <b>AGREED</b> that circle hooks are defined by hooks having their point turned at least 90° from their shank. [ <i>Note: 9,200 for publication budget line, 7,000 for consultancy budget line.</i> ]	<b>Withdrawn:</b> The Commission did not agree to fund this project in 2013.

---

**Science printing/publication activities for the year 2013**


---

Source	Objective/ Recommendation	Progress
Commission <b>High priority</b>	Printing of the annual report of the IOTC Scientific Committee.	<b>Completed:</b> The Commission however has agreed not to print reports in the future.
SC Recommendation SC15.41: <b>High priority</b>	<b>Billfish identification cards</b> – <b>NOTING</b> that the IOTC Secretariat has developed identification cards for billfish species at the request of the WPB and SC, but no funds have yet been allocated to print the cards, the SC <b>RECOMMENDED</b> that the Commission allocate funds in the 2013 budget to print sets of identification cards for the billfish species, noting that the total estimated printing costs for the first 1000 sets of the identification cards is around a maximum of US\$6,700. The IOTC Secretariat shall seek funds from potential donors to print additional sets of the identification cards at US\$5,500 per 1000 sets of cards. Estimated printing costs for 1000 sets of billfish species identification cards	<b>Completed:</b> The cards were developed and are being distributed.
SC Recommendation SC15.42: <b>High priority</b>	<b>Shark, marine turtle and seabird identification cards</b> – The SC <b>RECOMMENDED</b> that the Commission allocate additional funds in 2013 to print further sets of the shark, seabird and marine turtle identification cards developed by the IOTC Secretariat, noting that expected costs are in the vicinity of US\$6,000 per 1000 sets of cards.  Estimated production and printing costs for 1000 sets of species identification cards	<b>Pending:</b> This has been moved to the 2014 budget.
SC Recommendation SC15.43: <b>High priority</b>	<b>Tuna identification cards</b> – The SC <b>RECOMMENDED</b> that the Commission allocate funds in the 2013 budget to develop and print sets of identification cards for the three tropical tuna, two temperate tuna, and six neritic tuna and seerfish species under the IOTC mandate, noting that the total estimated production and printing costs for the first 1000 sets of the identification cards is around a maximum of US\$16,200. The IOTC Secretariat shall seek funds from potential donors to print additional sets of the identification cards at US\$5,500 per 1000 sets of cards. [ <i>Note: 9,200 for publication budget line, 7,000 for consultancy budget line.</i> ]	<b>Completed:</b> The cards were produced by a consultant and are currently being distributed.
SC Recommendation SC15.44:	<b>Hook identification cards</b> – <b>NOTING</b> the continued confusion in the terminology of various hook types being used in IOTC fisheries, (e.g. tuna hook vs. J-hook; definition of a circle hook), the SC <b>RECOMMENDED</b> that the IOTC Secretariat develop an identification guide for hooks and pelagic gears used in IOTC fisheries, as staffing and	<b>Withdrawn:</b> The Commission did not agree to fund this project in 2013.

Source	Objective/ Recommendation	Progress
	financial resources permit, and to distribute the guide to all CPCs once completed. The SC also <b>AGREED</b> that circle hooks are defined by hooks having their point turned at least 90° from their shank. [ <i>Note: 9,200 for publication budget line, 7,000 for consultancy budget line.</i> ]	

## APPENDIX II

## LIST OF CHAIRS, VICE-CHAIRS AND THEIR RESPECTIVE TERMS FOR ALL IOTC SCIENCE BODIES

Group	Chair/Vice-Chair	Chair	CPC/Affiliation	1 <sup>st</sup> Term commencement date	Term expiration date (End date is until replacement is elected)	Comments
Commission	Chair	Mr Daroomalingum Mauree	Mauritius	21 Apr-2011	End of Com. in 2015	2 <sup>nd</sup> term
	Vice-Chair	Dr Ahmed Mohammed Al-Mazroui Mr Jeongseok Park	Oman Rep. of Korea	10-May-13	End of Com. in 2015	1 <sup>st</sup> term
CoC	Chair	Mr Herminio Tembe	Mozambique	4-May-13	End of CoC in 2015	1 <sup>st</sup> term
	Vice-Chair	Mr Hosea Gonza Mbilinyi	Tanzania	4-May-13	End of CoC in 2015	1 <sup>st</sup> term
SCAF	Chair	Mr Godfrey Monor	Kenya	24-Apr-12	End of SCAF in 2014	1 <sup>st</sup> term
	Vice-Chair	Dr Benjamin Tabios	Philippines	10-May-13	End of SCAF in 2015	1 <sup>st</sup> term
TCAC	Chair	Mr Daroomalingum Mauree	Mauritius	21-Apr-11	End of Com. in 2013	1 <sup>st</sup> term
	Vice-Chair	Vacant	Vacant	Vacant	Vacant	Vacant
SC	Chair	Dr Tsutomu Nishida	Japan	17-Dec-11	End of SC in 2015	2 <sup>nd</sup> term
	Vice-Chair	Mr Jan Robinson	Seychelles	17-Dec-11	End of SC in 2015	2 <sup>nd</sup> term
WPB	Chair	Dr Jerome Bourjea	EU, France	08-Jul-11	End of WPB in 2015	2 <sup>nd</sup> term
	Vice-Chair	Dr Miguel Santos	EU, Portugal	08-Jul-11	End of WPB in 2015	2 <sup>nd</sup> term
WPTmT	Chair	Dr Zang Geun Kim	Korea, Rep. of	22-Sep-11	End of WPTmT in 2014	1 <sup>st</sup> term
	Vice-Chair	Dr Takayuki Matsumoto	Japan	06-Sep-12	End of WPTmT in 2014	1 <sup>st</sup> term
WPTT	Chair	Dr Hilario Murua	EU, Spain	25-Oct-10	End of WPTT in 2014	2 <sup>nd</sup> term
	Vice-Chair	Dr Shiham Adam	Maldives, Rep. of	23-Oct-11	End of WPTT in 2015	2 <sup>nd</sup> term
WPEB	Chair	Dr Rui Coelho	EU, Portugal	16-Sept-13	End of WPEB in 2015	1 <sup>st</sup> term
	Vice-Chair	Dr Evgeny Romanov	EU, France	27-Oct-11	End of WPEB in 2015	2 <sup>nd</sup> term
WPNT	Chair	Dr Prathibha Rohit	India	27-Nov-11	End of WPNT in 2015	2 <sup>nd</sup> term
	Vice-Chair	Dr Farhad Kaymaram	I.R. Iran	27-Nov-11	End of WPNT in 2015	2 <sup>nd</sup> term
WPDCS	Chair	Dr Emmanuel Chassot	EU, France	30-Nov-13	End of WPDCS in 2015	1st term
	Vice-Chair	Dr Pierre Chavance	EU, France	10-Dec-11	End of WPDCS in 2015	2 <sup>nd</sup> term
WPM	Chair	Dr Iago Mosqueira	EU, Spain	18-Dec-11	End of WPM in 2015	2 <sup>nd</sup> term
	Vice-Chair	Dr Toshihide Kitakado	Japan	18-Dec-11	End of WPM in 2015	2 <sup>nd</sup> term



**APPENDIX III****LIST OF PAPERS WITH PARTICIPATION FROM IOTC SECRETARIAT STAFF IN THE YEAR 2013**

Document number	Title
<i>Tenth Session of the Compliance Committee</i>	
IOTC-2012-CoC09-03 Rev_2	Review of the implementation of IOTC Conservation and Management Measures
IOTC-2012-CoC09-04a Rev_1	IOTC Regional Observer Programme for at-sea transhipments – Secretariat’s Report
IOTC-2012-CoC09-05	Review of reference fishing capacity and fleet development plans
IOTC-2012-CoC09-05 Add_1 Rev_1	Collection of fleet development plans
IOTC-2012-CoC09-06	Update on progress regarding the Performance Review (Resolution 09/01).
IOTC-2012-CoC09-07	Review of the Provisional IUU Vessels List
IOTC-2012-CoC09-08a	Complementary elements for discussion under item 8 of the agenda for the Compliance Committee
IOTC-2012-CoC09-CR1 to 32	32 x Compliance reports for each CPC (Secretariat)
<i>Tenth Session of the Standing Committee on Administration and Finance</i>	
IOTC-2012-SCAF09-03	Progress report of the Secretariat: 2011
IOTC-2012-SCAF09-04	Financial Statement: 2011
IOTC-2012-SCAF09-05	Program of work and budget estimates for 2012 and 2013
IOTC-2012-SCAF09-06	Update on progress regarding Resolution 09/01 – On the performance review follow-up
IOTC-2012-SCAF09-07	Establishing procedures for the implementation of the IOTC meeting participation fund
<i>Seventeenth Session of the Commission</i>	
IOTC-2012-S16-06	Update on progress regarding Resolution 09/01 on the performance review follow-up
IOTC-2012-S16-07	On conservation and management measures that may no longer be applicable (Secretariat)
IOTC-2012-S16-08	Current conservation and management measures requiring action by the Commission in 2012 (Secretariat)
<i>Third Session of the IOTC Working Party on Neritic Tunas</i>	
IOTC-2013-WPNT03-03	Outcomes of the Fifteenth Session of the Scientific Committee (Secretariat)
IOTC-2013-WPNT03-04	Outcomes of the Seventeenth Session of the Commission (Secretariat)
IOTC-2013-WPNT03-05	Review of current Conservation and Management Measures relating to neritic tuna species (Secretariat)
IOTC-2013-WPNT03-06	Progress made on the recommendations of WPNT02 (Secretariat and Chair)
IOTC-2013-WPNT03-07 Rev_1	Review of the statistical data available for the neritic tuna species (Secretariat)
IOTC-2013-WPNT03-23	Maldives kawakawa pole and line fishery catch rate standardization: 2004–2011 (R. Sharma, J. Geehan, M.S. Adam & R. Jauhary)
IOTC-2013-WPNT03-24	Indian Ocean kawakawa assessment based on the Maldives pole and line CPUE index (R. Sharma & S. Zhou)
IOTC-2013-WPNT03-25	Stock assessment of two neritic tuna species in Indian Ocean, kawakawa and longtail tuna using catch-based stock reduction methods (S. Zhou & R. Sharma)
<i>Ninth Session of the IOTC Working Party on Billfish</i>	
IOTC-2013-WPB11-03	Outcomes of the Fifteenth Session of the Scientific Committee (Secretariat)
IOTC-2013-WPB11-04	Outcomes of the Seventeenth Session of the Commission (Secretariat)
IOTC-2013-WPB11-05	Review of Conservation and Management Measures relevant to billfish (Secretariat)
IOTC-2013-WPB11-06	Progress made on the recommendations of WPB10 (Secretariat)
IOTC-2013-WPB11-07 Rev_2	Review of the statistical data and fishery trends for billfish (Secretariat)
IOTC-2013-WPB11-08	Billfish identification cards (Secretariat)
IOTC-2013-WPB11-09	Revision of the WPB work plan (Chair & Secretariat)
IOTC-2013-WPB11-28 Rev_1	Stock assessment of three billfish species in Indian Ocean, blue, black and striped marlin using stock reduction methods (Secretariat)

Document number	Title
IOTC-2013-WPB11-32	Preliminary stock assessments of blue marlin ( <i>Makaira mazara</i> ) and striped marlin ( <i>Kajikia audax</i> ) in the Indian Ocean by A Stock-Production Model Incorporating Covariates (ASPIC) (Wang, Nishida, Sharma, Andrade and Coelho)
<i>Ninth Session of the Working Party on Ecosystems and Bycatch</i>	
IOTC-2013-WPEB09-03	Outcomes of the Fifteenth Session of the Scientific Committee (Secretariat)
IOTC-2013-WPEB09-04	Outcomes of the Seventeenth Session of the Commission (Secretariat)
IOTC-2013-WPEB09-05	Review of current Conservation and Management Measures relevant to ecosystems and bycatch (Secretariat)
IOTC-2013-WPEB09-06	Progress made on the recommendations of WPEB08 (Secretariat)
IOTC-2013-WPEB09-07	Status of development and implementation of National Plans for Action for Seabirds and Sharks (Secretariat)
IOTC-2013-WPEB09-08	Review of the statistical data available for bycatch species (Secretariat)
IOTC-2013-WPEB09-09	Progress on reporting and outcomes from Compliance Committee (Secretariat)
IOTC-2013-WPEB09-10	Update on the implementation of the IOTC Regional Observer Scheme (Secretariat)
IOTC-2013-WPEB09-11	Revision of the WPEB work plan (Secretariat & Chair)
<i>Fifteenth Session of the Working Party on Tropical Tunas</i>	
IOTC-2013-WPTT15-03	Outcomes of the Fifteenth Session of the Scientific Committee (Secretariat)
IOTC-2013-WPTT15-04	Outcomes of the Seventeenth Session of the Commission (Secretariat)
IOTC-2013-WPTT15-05	Review of Conservation and Management Measures relevant to tropical tunas (Secretariat)
IOTC-2013-WPTT15-06	Progress made on the recommendations of WPTT14 (Secretariat)
IOTC-2013-WPTT15-07 Rev_1	Review of the statistical data and fishery trends for tropical tunas (Secretariat)
IOTC-2013-WPTT15-08	Revision of the WPTT work plan (Secretariat)
IOTC-2013-WPTT15-30	Stock assessment of bigeye tuna in the Indian Ocean for 2012 (A. Langley, M. Herrera & R. Sharma)
IOTC-2013-WPTT15-32	Maldives skipjack pole and line fishery catch rate standardization 2004-2011: reconstructing historic CPUE till 1985 (R. Sharma, J. Geehan & M.S. Adam)
IOTC-2013-WPTT15-33 Rev_1	Process and arrangement for management strategy evaluation of Indian Ocean skipjack tuna (M.S. Adam, R. Sharma & N. Bentley)
IOTC-2013-WPTT15-41 Rev_1	Review of length frequency data of the Taiwan,China distant water longline fleet (J. Geehan & S. Hoyle)
<i>First CPUE Workshop</i>	
IOTC-2013-WPCPUE-01	Report of the IOTC CPUE Workshop 21-22 <sup>nd</sup> October, San Sebastian, Spain.
<i>Ninth Working Party on Data Collection and Statistics</i>	
IOTC-2013-WPDCS09-03	Outcomes of the Fifteenth Session of the Scientific Committee and of the Seventeenth Session of the Commission (Secretariat)
IOTC-2013-WPDCS09-04	Progress made on the recommendations of WPDCS08 (Secretariat)
IOTC-2013-WPDCS09-05	Review of current Conservation and Management Measures relating to data collection and statistics (Secretariat)
IOTC-2013-WPDCS09-06	Report on IOTC Data Collection and Statistics (Secretariat)
IOTC-2013-WPDCS09-11	IOTC-OFCF Project activities in 2013: Progress Report (Secretariat)
IOTC-2013-WPDCS09-12	Review of length frequency data of the Taiwanese Distant Water Longline Fleet (Secretariat & S. Hoyle)
IOTC-2013-WPDCS09-13	Biological data on tuna and tuna-like species gathered at the IOTC Secretariat: Status Report (Secretariat)
IOTC-2013-WPDCS09-14	Revision to historical data sets held by the Secretariat (Secretariat)
IOTC-2013-WPDCS09- INF01	Report and documentation of the Indian Ocean Tuna Fisheries of Indonesia Albacore Catch Estimation Workshop (Secretariat)
<i>Sixteenth Session of the Scientific Committee</i>	
IOTC-2013-SC16-03	Outcomes of the Seventeenth Session of the Commission (Secretariat)

Document number	Title
IOTC–2013–SC16–04	Previous decisions of the Commission (Secretariat)
IOTC–2013–SC16–05	Report of the Secretariat – Activities in support of the IOTC science process in 2013 (Secretariat)
IOTC–2013–SC16–06	Standardisation of IOTC Working Party and Scientific Committee report terminology (Secretariat)
IOTC–2013–SC16–07	Status of development and implementation of national plans of action for seabirds and sharks, and implementation of the FAO guidelines to reduce marine turtle mortality in fishing operations (Secretariat)
IOTC–2013–SC16–08	Best practice guidelines for the safe release and handling of encircled cetaceans (Secretariat)
IOTC–2013–SC16–09	Best practice guidelines for the safe release and handling of encircled whale sharks (Secretariat)
IOTC–2013–SC16–10	Revision to historical data sets held by the Secretariat (Secretariat)
IOTC–2013–SC16–12	Outcomes of the informal workshop on CPUE standardisation (Secretariat)
IOTC–2013–SC16–13	Examination of the effects of piracy on fleet operations and subsequent catch and effort trends (Secretariat)
IOTC–2013–SC16–14	Update on the implementation of the regional observer scheme (Secretariat)
IOTC–2013–SC16–15	Update on progress regarding Resolution 09/01 – on the performance review follow-up (Secretariat)
IOTC–2013–SC16–16	Proposed priorities for Working Party’s and the Scientific Committee for 2013 and 2014 (Secretariat)
IOTC–2013–SC16–17	Proposed schedule of Working Party and Scientific Committee meetings for 2013 and 2014 (Secretariat)
IOTC–2013–SC16–18	Shark Year (multi-year research) Program (WPEB small working group of shark experts & Secretariat)
IOTC–2013–SC16–19	Summary: Estimation of fishing capacity by tuna fishing fleets in the Indian Ocean (G. Moreno & IOTC Secretariat)

**APPENDIX IV**  
**PROGRESS MADE ON THE RECOMMENDATIONS OF SCAF10, ENDORSED AT S17**

#	Recommendation from SCAF10	Adopted by S17	Responsibility	Due date/Status
1	<p>SCAF10.01 (para. 27) The SCAF <b>RECOMMENDED</b> that all Members with overdue contributions finalise payment of those contributions as soon as possible so as not to hinder the operation of the IOTC. To facilitate this process, the Chair of the Commission, with the assistance of the Executive Secretary, shall write to each of the CPCs with contributions in arrears totalling more than the previous two years to seek confirmation of their continued involvement in the IOTC, quoting Article IV, para. 4 of the IOTC Agreement, and to seek payment for overdue contributions. Responses from those CPCs should be circulated by the Secretariat to all CPCs for consideration at the 18<sup>th</sup> Session of the Commission.</p> <p><i>Progress: Letters were sent to Iran, Guinea, Pakistan, Eritrea, Sudan and Sierra Leone. Response only received from Pakistan.</i></p>	Yes	Chair/Secretariat	Completed
2	<p><b>Capacity building</b></p> <p>SCAF10.02 (para. 53) The SCAF <b>RECOMMENDED</b> that in addition to the funds included in the budget for 2013, the Commission may wish to consider further increasing the Capacity Building budget line to cover the additional recommendations from the Scientific Committee.</p> <p><i>Progress: The Commission did not increase the Capacity Building Budget.</i></p>	No	Secretariat	Completed
3	<p>SCAF10.03 (para. 54) The SCAF <b>RECOMMENDED</b> that capacity building activities, including workshops on science (stock assessment), compliance with IOTC CMMs, data collection and reporting, and bridging the gap between IOTC science and management advice, be continued in 2013 and financially supported through the IOTC budget and through voluntary contributions from Members and other interested parties.</p> <p><i>Progress: A Regional Stock Assessment workshop was carried out in Bangkok, Thailand (20-24 May 2013) with co-financing from BOBLME. Maldives, Bangladesh, India, Myanmar, Malaysia and Indonesia participated.</i></p>	Yes	Secretariat	Completed
4	<p>SCAF10.04 (para. 55) The SCAF <b>RECOMMENDED</b> that the Secretariat seek external funds to coordinate the development and delivery of training workshops focused on providing assistance to developing CPCs to better understand the Management Strategy Evaluation process, including how reference points and harvest control rules are likely to function in an IOTC context.</p> <p><i>Progress: Funds earmarked under the GEF - FAO ABNJ project and also COI – SmartFish Project.</i></p>	Yes	Secretariat	Ongoing

#	Recommendation from SCAF10	Adopted by S17	Responsibility	Due date/Status
5	<p>SCAF10.05 (para. 56) The SCAF <b>RECOMMENDED</b> that the Secretariat seek external funds to deliver two additional capacity building projects: 1) on the training of CPCs having gillnet fleets on species identification, bycatch mitigation and data collection methods and also to identify other potential sources of assistance to carry out such activities; and 2) a dedicated workshop on CPUE standardisation.</p> <p><i>Progress: Funds have been earmarked under the ABNJ project to look at gillnet fisheries in the North Indian Ocean. Addition funds also earmarked in the 2014/15 budget for this activity.</i></p>	Yes	Commission/ Secretariat	Ongoing
6	<p><b>IOTC website</b></p> <p>SCAF10.06 (para. 57) The SCAF reiterated its <b>RECOMMENDATION</b> from previous years that the IOTC Secretariat expedite the finalisation of the new website for the IOTC, noting that the current website is cumbersome, difficult to navigate, and in some cases, provides out-dated information.</p> <p><i>Progress: New Website online.</i></p>	Yes	Secretariat	Completed
7	<p><b>Meeting participation fund (MPF)</b></p> <p>SCAF10.07 (para. 58) The SCAF <b>RECOMMENDED</b> that the MPF be replenished to its initial level of USD\$200,000 for the financial (calendar) year 2013, through the allocation of funds from the IOTC accumulated funds provided that there is a solution to cover the operational cost of the Secretariat for the first six months of the year.</p> <p><i>Progress: Approved by the 17<sup>th</sup> Session of the Commission.</i></p>	Yes	Secretariat	Completed
8	<p>SCAF10.08 (para. 59) The SCAF reiterated its previous <b>RECOMMENDATION</b> that the MPF be separated from the main budget as a separate project, and for the Executive Secretary to request that the FAO project support costs be waived.</p> <p><i>Progress: Contacts have been made with appropriate offices in FAO to proceed with the creation of a separate project and project service cost has been waived. To be implemented in 2014/15.</i></p>	Yes	Executive Secretary	Completed
9	<p>SCAF10.09 (para. 60) The SCAF <b>RECOMMENDED</b> that the rules of procedure for the administration of the IOTC MPF be modified to include funding for Chairs and Vice-Chairs from IOTC developing coastal states, noting that without access to this fund, the ability of developing coastal state scientists to offer their services as Chairs and Vice-Chairs will be very limited. The following text shall be inserted into the rules of procedure for the administration of the MPF, under the ‘<b>Eligibility criteria</b>’ section:</p>	Yes	Secretariat	Completed

#	Recommendation from SCAF10	Adopted by S17	Responsibility	Due date/Status
	<p><i>“Meeting Participation Fund for Chairs and Vice-Chairs from IOTC developing coastal states</i></p> <ul style="list-style-type: none"> <li>• Any Chair or Vice-Chair from a developing CPC, submitting a complete application before the set deadline, including a working paper relevant to the subject of the meeting, is eligible to benefit from the IOTC Meeting Participation Fund.</li> <li>• Either the Chair or Vice-Chair from a developing CPC, submitting a complete application before the set deadline, and presenting a meeting report to a Committee, is eligible to benefit from the IOTC Meeting Participation Fund.</li> </ul> <p>The same rules for document provision to the relevant subsidiary body of the Commission shall apply to Chairs and Vice-Chairs funded by the MPF.”</p> <p><b>Progress:</b> <i>Completed.</i></p>			
10	<p>SCAF10.10 (para. 61) The SCAF <b>RECOMMENDED</b> that the Commission note Resolution 10/05 <i>on the establishment of a meeting participation fund for developing IOTC Member and Non-Contracting Cooperating Parties (CPC's)</i> indicated that the Commission will identify, at its 15<sup>th</sup> Session, a procedure for supplying funds to the MPF in the future, which is now overdue, and address this matter at its 17<sup>th</sup> Session.</p> <p><b>Progress:</b> <i>No procedure identified by the Commission.</i></p>	Yes	Commission	Ongoing
11	<p><b>Options to reduce budget costs</b></p> <p>SCAF10.11 (para. 63) The SCAF <b>RECOMMENDED</b> that the Commission considers making all IOTC meetings paperless, noting that this is already the practice in the Scientific Committee and its Working Parties. Only revisions to documents made during a meeting shall be printed upon request.</p> <p><b>Progress:</b> <i>Adopted by the Commission.</i></p>	Yes	Commission/ Secretariat	Completed
12	<p><b>Fisheries Officer (Science)</b></p> <p>SCAF10.12 (para. 64) The SCAF <b>RECOMMENDED</b> that a Fishery Officer (Science), working on science support, be employed at the Secretariat and for this to be incorporated in the Commission’s budget on an ongoing basis. The Secretariat shall contact FAO to determine if they are able to make a financial contribution towards this position in 2014.</p> <p><b>Progress:</b> <i>Fishery Officer has been recruited and would be joining the Secretariat in June 2014. The Secretariat wrote to FAO but has not received any official communication. The Secretariat has been verbally informed that this is not possible for now.</i></p>		Secretariat	Completed



#	Recommendation from SCAF10	Adopted by S17	Responsibility	Due date/Status
13	<p><b>Program of work and budget</b></p> <p>SCAF10.13 (para. 65) The SCAF <b>RECOMMENDED</b> that the Secretariat seek additional sources of funding to complete the workplan of the Secretariat in 2013 and future years, including but not limited to IOC-SmartFish.</p> <p><i>Progress: Additional funds were sought from the World Bank, BOBLME and WWF, in particular for MSE, Compliance and data collection and reporting.</i></p>	Yes	Secretariat	Ongoing
	<p>SCAF10.15 (para. 67) The SCAF <b>RECOMMENDED</b> that the Commission adopt the budget for, and the scheme of contributions for 2013 as outlined in <u>Appendix III</u> and <u>Appendix IV</u> respectively.</p> <p><i>Progress: Adopted by the Commission</i></p>	Yes	Secretariat	Completed
14	<p>SCAF10.14 (para. 66) The SCAF <b>RECOMMENDED</b> that the Commission endorse the IOTC Secretariat's programme of work for the financial period 01 January, 2013 to 31 December 2013, as outlined in paper IOTC-2013-SCAF10-05.</p> <p><i>Progress: Endorsed by the Commission</i></p>	Yes	Commission	Completed
15	<p><b>Performance Review Update (Resolution 09/01 on the performance review follow-up)</b></p> <p>SCAF10.16 (para. 71) The SCAF <b>RECOMMENDED</b> that the Commission note the current status of implementation for each of the recommendations arising from the Report of the IOTC Performance Review Panel, relevant to the SCAF, as provided in <u>Appendix V</u>.</p> <p><i>Progress: Noted</i></p>	Yes	Commission	2013
	<p><b>Date and Place of the Eleventh Session of the Standing Committee on Administration and Finance</b></p> <p>SCAF10.18 (para. 75) The SCAF <b>RECOMMENDED</b> that the 11<sup>th</sup> Session of the SCAF be held on the day immediately prior to the Commission meeting, rather than during the Commission meeting. The exact dates and location would be decided by the Commission.</p> <p><i>Progress: Noted</i></p>	Yes	Commission/Secretariat	2013