

-PROGRESS REPORT OF THE IOTC SECRETARIAT: 2014

Submitted by: IOTC Secretariat, Last updated: 19 March 2015

1. MEMBERSHIP OF THE IOTC

1. **Contracting Parties:** The IOTC consists of 32 Contracting Parties: Australia, Belize, China, Comoros, Eritrea, European Union, France (OT), Guinea, India, Indonesia, Iran (Islamic Rep. of), Japan, Kenya, Korea (Rep. of), Madagascar, Malaysia, Maldives, Mauritius, Mozambique, Oman, Pakistan, Philippines, Seychelles, Sierra Leone, Somalia, Sri Lanka, Sudan, Tanzania (United Rep. of), Thailand, United Kingdom (OT), Vanuatu and Yemen.
 - a. The Federal Government of Somali Republic has become a Contracting Party of the IOTC (on 22nd May, 2014), following deposit of the instrument of accession with the FAO Director-General.
 - b. The Republic of Vanuatu notified the FAO Director-General of its withdrawal from the membership of IOTC, which shall become effective on 31st December 2015.
2. **Cooperating Non-Contracting Parties (CNCP):** There are currently 3 CNCPs. Senegal and the Rep. of South Africa had their status renewed for another 12 months at the 18th Session of the Commission, and Djibouti was granted CNCP status for the first time at the same Session.

2. MISSION OF THE IOTC SECRETARIAT AND STRATEGY OF IMPLEMENTATION

3. The mission of the IOTC Secretariat is: *To facilitate the processes required to implement the policies and activities of the Commission, whose goal is to achieve the objectives stated in the IOTC Agreement.* In essence, these processes include the acquisition, processing and dissemination of information that constitutes the basis for the Commission's decisions, as well as supporting the actions taken by the Members and Cooperating Parties to implement effectively those decisions.
4. The Secretariat is divided into sections composed of staff with similar specialised skills ([Fig. 1](#)). In order to provide support to the activities of the Commission and its subsidiary bodies, there is close cooperation between the Sections in the production of datasets and analyses that will assist the Scientific Committee and its Working Parties to formulate its advice to the Commission. Similarly, the Data Section and the Compliance Section cooperate in the maintenance of the databases needed to monitor the effectiveness in the implementation of the measures adopted by the Members.

2.1 Professional Staff – Recruitment activities

5. Fishery Officer (Science): Dr Sarah Martin joined the IOTC Secretariat in June, 2014. The Selection Panel consisted of the IOTC Executive Secretary (Mr Rondolph Payet), the Deputy Secretary (Dr David Wilson) and the Data Coordinator (Mr Miguel Herrera).

2.2 General Grade Staff – Recruitment activities

6. Administrative Staff: Mrs Hava Yakub was on a temporary contract with IOTC from July–December 2014.

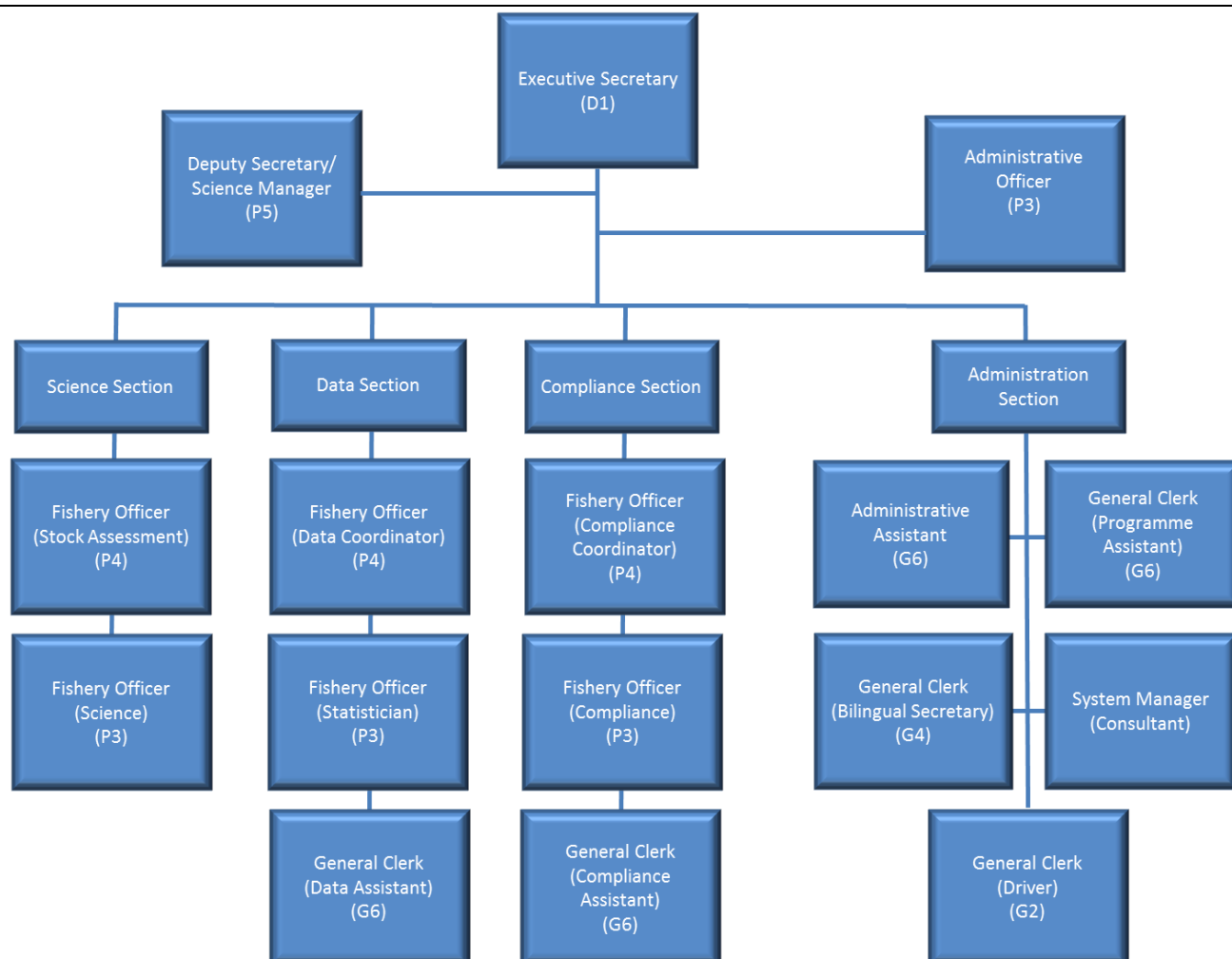


Fig. 1. Structure of the IOTC Secretariat in 2014.

3. REPORTING STRUCTURE

7. To facilitate accountability, the activities of the IOTC Secretariat in 2014 have been grouped into six major functional areas which reflect the ‘*Program of work and budget*’ approved by the Commission at its 18th Session in 2014, as follows:
 - **Support to scientific activities:** The acquisition and processing of scientific data, as required by the Scientific Committee to conduct stock status analyses. Supply of stock assessment services as required by the working groups.
 - **Support to compliance activities:** Maintenance of lists of vessels and compliance databases, reporting on compliance by Contracting Parties and Cooperating Non-Contracting Parties (CPCs). Providing support to CPCs in the implementation of IOTC Resolutions.
 - **Communications and public information:** Considered essential in allowing CPCs to follow the progress of the Commission’s work in a transparent way, and to increase the visibility of the Commission’s activities to the general public.
 - **Support to meetings:** Logistic support in the facilitation of meetings, preparation of reports and maintenance of the meetings calendar
 - **Information Technology:** Provide basic computer infrastructure, including maintenance of the network and servers, as well as Internet support.
 - **Administration:** Financial administration in conjunction with FAO, administration of extra-budgetary funds, travel arrangements, general logistical support to the activities of the technical sections.
8. The Secretariat’s Programme of Work for 2014, approved by the Commission at its 18th Session is provided at [Appendix I](#) and includes brief summaries of the progress made, in addition to the information provided throughout this report. Reference should also be made to the proposed Strategy for the IOTC Secretariat for the next three years – Document IOTC–2015–SCAF12–08.

4. SUPPORT TO SCIENTIFIC ACTIVITIES

4.1 Role of the IOTC Secretariat in technical matters

9. The IOTC Secretariat currently provides the following services in the scientific processes of the Commission:
- Advice and training in data collection;
 - Advice and training on stock assessment methods;
 - Advice, management and coordination of a limited range of scientific activities (e.g. previously tagging; CPUE standardisation);
 - Preparation and provision of summary mandatory fisheries statistics for use by CPCs for research and the production of stock assessments (e.g. catch at size and catch at age);
 - Preparation and reporting on the status of the IOTC databases to Working Parties;
 - Drafting of species Executives Summaries;
 - Drafting and production of the Working Party and Scientific Committee reports;
 - Organisation of the Working Parties and Scientific Committee;
 - Preparation of background documents for the Working Parties and the Scientific Committee;
 - Stock assessments on species as determined by the Scientific Committee.

4.2 Science Staffing

10. The IOTC Secretariat's scientific support services area is currently staffed by six (6) personnel as follows:

- Deputy Secretary/Science Manager (P5)
- Fishery Officer (Stock Assessment) (P4)
- Fishery Officer (Data Coordinator) (P4)
- Fishery Officer (Statistics) (P3)
- Fishery Officer (Science) (P3)
- General Clerk (Data Assistant) (G6)

4.3 Scientific meetings

4.3.1 IOTC meetings – Working parties

11. In 2014, five Working Party meetings were organised and facilitated by the IOTC Secretariat ([Table 2](#)). The current Chairs and Vice-Chairs for each Committee and Working Party are provided at [Appendix II](#).
12. [Appendix III](#) lists the documents produced by the IOTC Secretariat in support of Working Party meetings held in 2014. In addition, the IOTC Secretariat produced revised Executive Summaries for all of the IOTC stocks, as well as for sharks, seabirds and marine turtles in association with various experts, totalling 25 Executive Summaries.
13. The IOTC Secretariat facilitated the participation of invited experts that were selected to attend each of the Working Party meetings in 2014. The names and affiliations of each of the Invited Experts for 2014 are provided in [Table 3](#). The IOTC Secretariat's level of participation in the IOTC science subsidiary bodies are provided in [Table 4](#).

4.3.2 IOTC meetings – Science Meeting Participation Fund usage

14. The IOTC Meeting Participation Fund (MPF) was utilised for the indicated scientific meetings and/or Working Parties indicated in [Table 1](#). The 2014 meetings of CoC11, SCAF11 and S18 in Colombo, Sri Lanka have also accounted for significant expenditure against the MPF budget (USD \$48,301). In 2014 the IOTC Secretariat facilitated the participation of 16 individuals from 15 developing CPCs of IOTC to the non-scientific meetings, as detailed in [Table 1](#). The total allocation for MPF in 2014 was USD 127,000 (USD 60,000 from IOTC regular budget allocation and 67,000 from the savings under the ICRU budgeting). MPF expenditure in 2014 has reached USD 118,517, and greatly benefitted from Membership contributions and partnership association from BOBLME, ABNJ- FAO and COI-Smartfish (EU Funded).

Table 1. Participants of non-scientific meetings supported by the MPF in 2014, with 2013 participant numbers presented for comparison.

Meeting	Date and place	2013	2013
Compliance Committee	26–28 May, Sri Lanka	13	13
Standing Committee on Administration and Finance	29–30 May, Sri Lanka	12	12
Session of the Commission	1–5 June, Sri Lanka	13	13

15. Noting that the intention of the MPF was to utilise the funds, as a first priority, to support the participation of scientists from developing CPCs in scientific meetings of the IOTC, including Working Parties, in 2014, the IOTC Secretariat facilitated the participation of 33 individuals from developing CPCs of IOTC to the seven working Party meetings held in 2014 as detailed in [Table 2](#). The total level of participation (including the Scientific Committee) by MPF recipients has decreased in 2014 (49), down from 58 in 2013, 46 in 2012, 33 in 2011 and 19 in 2010. MPF recipients presented 33 working documents in 2014 (47 in 2013, 36 in 2012) to the various Working Party meetings, and 15 National Reports (11 in 2013, 12 in 2012) to the Scientific Committee, as detailed in [Table 2](#). The IOTC Secretariat assisted in the coordination of Working Party activities for the IOTC species, contributing a number of supporting analyses and stock assessments as lead or co-author for seven IOTC species (kawakawa, longtail tuna, narrow-barred Spanish mackerel, albacore, swordfish, black marlin and skipjack tuna) (see list of documents in [Appendix III](#)).

Table 2. Scientific Meetings held in 2014, prior to the 17th Session of the IOTC Scientific Committee meeting. Numbers in brackets represent numbers for the previous working party meeting.

Working Party	Date and place of most recent meeting	No. of participants					Meeting Participation Fund					No. of documents (and for the previous meeting)
		2010	2011	2012	2013	2014	2010	2011	2012	2013	2014	
Neritic Tunas	29 June–2 July 2014 Phuket, Thailand	–	28	35	42	37	–	9 ¹	10	11	13	Total: 36 (40) Working papers: 34 (34) Information papers: 2 (6)
Temperate Tunas	28–31 July 2014 Busan, Rep. of Korea	15*	16	26	–	27	–	2	3	–	3	Total : 30 (28) Working paper : 26 (19) Information papers : 4 (9)
Billfish	21–25 October 2014 Yokohama, Japan	12	27	23	24	21	0	5	5	10	4	Total: 29 (35) Working papers: 27 (32) Information papers: 2 (3)
Ecosystems and Bycatch	27–31 October 2014 Yokohama, Japan	37	49	48	32	37	9 ²	7 ³	7	11	5	Total: 61 (64) Working papers: 34 (47) Information papers: 27 (17)
Tropical Tunas	15–19 November 2014 Bali, Indonesia	39	49	47	46	53	11	13	8	10	6	Total: 59 (57) Working papers: 54 (42) Information papers: 5 (15)
Data Collection and Statistics	2–4 December 2014 Seychelles	28	21	–	23	30	–	2	–	5	1	Total: 21 (18) Working papers: 12 (17) Information papers: 9 (1)
Methods	5–6 December 2014 Seychelles	18*	–	22	–	28	–	–	1	–	3 ⁴	Total: 11 (15) Working papers: 9 (4) Information papers: 2 (11)
Scientific Committee	8–12 December 2014 Seychelles	41	50	54	75	62	7	10	12	11	15	Working papers: 9 (17) Executive Summaries: 25 National Reports: 26 (28) Information papers: 1 (15)

*2008.

¹ Another 7 scientists were supported by IOTC through the Capacity Building funds as they were also attending the capacity building workshop in Chennai, India (WPNT01)

² 6 scientists attended both the WPTT and WPEB

³ 3 scientists attended both the WPTT and WPEB

⁴ 3 scientists attended both the WPM and SC

Table 3. Invited Experts for Working Party meetings in 2014.

Working Party	Date and place	Name	Affiliation
Neritic Tunas	29 June–2 July 2014 Phuket, Thailand	Dr. Shiji Zhou	CSIRO, Australia
Temperate Tunas	28–31 July 2014 Busan, Rep. of Korea	Dr Simon Hoyle	Independent consultant, New Zealand
Billfish	21–25 October 2014 Yokohama, Japan	Dr. Humber Andrade	Universidade Federal Rural de Pernambuco, Brazil
Ecosystems and Bycatch	27–31 October 2014, Yokohama, Japan	Dr. Joel Rice	Secretariat of the Pacific Community (SPC)
Tropical Tunas	15–19 November 2014, Bali, Indonesia	Dr. Simon Hoyle	Independent consultant, New Zealand
Data Collection and Statistics	2–4 December Seychelles	Nil	Nil
Methods	5–6 December Seychelles	Nil	Nil

Table 4. Secretariat's participation in IOTC Subsidiary bodies (Science) in 2014.

Working Party	Date and place	IOTC Staff Member
Neritic Tunas	29 June–2 July 2014 Phuket, Thailand	Deputy Secretary/Science Manager, Fishery Officer (Stock Assessment), Fishery Officer (Statistics), Fishery Officer (Science)
Temperate Tunas	28–31 July 2014 Busan, Rep. of Korea	Deputy Secretary/Science Manager, Fishery Officer (Stock Assessment)
Billfish	27–31 October 2014, Yokohama, Japan	Deputy Secretary/Science Manager, Fishery Officer (Stock Assessment), Fishery Officer (Data Coordinator)
Ecosystems and Bycatch	27–31 October 2014, Yokohama, Japan	Executive Secretary, Deputy Secretary/Science Manager, Fishery Officer (Stock Assessment), Fishery Officer (Science)
Tropical Tunas	15–19 November 2014, Bali, Indonesia	Deputy Secretary/Science Manager, Fishery Officer (Stock Assessment), Fishery Officer (Statistics)
Data Collection and Statistics	2–4 December Seychelles	Fishery Officer (Stock Assessment), Fishery Officer (Data Coordinator), Fishery Officer (Statistics), Fishery Officer (Science), General Clerk (Data Assistant)
Methods	5–6 December Seychelles	Fishery Officer (Stock Assessment), Fishery Officer (Statistics), Fishery Officer (Science), General Clerk (Data Assistant)
Scientific Committee	8–12 December Seychelles	Executive Secretary, Deputy Secretary/Science Manager, Fishery Officer (Stock Assessment), Fishery Officer (Data Coordinator), Fishery Officer (Statistics), Fishery Officer (Science), General Clerk (Data Assistant)

4.3.3 IOTC meetings – Science to management workshops

16. The IOTC organised two workshops on connecting the IOTC Science and Management processes in 2014:
 - 1st SMWS: Phuket, Thailand from the 25–27 June, 2014. Financed by BOBLME and IOTC.
 - 2nd SMWS: Cape Town, South Africa from the 20–22 September 2014. Financed by the Australian Government and IOTC.
17. The aims of the workshops were to:
 - improve the level of comprehension among IOTC Members on how the scientific process informs the management of IOTC species and ecosystems
 - increase the awareness of IOTC Members to their obligations, as stipulated in the Commissions' Conservation and Management Measures which are based on rigorous scientific advice
 - Improve the decision making process within the IOTC.
 The workshops covered the following core topics:
 - Structure and functioning of the IOTC
 - Current status of IOTC stocks
 - Communicating IOTC science to managers
 - Lessons to be learnt from other fisheries management structures
 - How to interpret science advice as a manager
 - Country level implications arising from stock assessment results and management options analyses
 - How use the IOTC scientific advice and draft possible conservation and Management measures
 - Implications of current Conservation and Management Measures for CPCs
 - Negotiations within the Commission
 - Effects of poor compliance with IOTC requirements on the provision of scientific advice and management.
18. The 1st Workshop was delivered by Dr. David Wilson (Deputy Secretary/Science Manager, IOTC), Dr. Rishi Sharma (Fishery Officer – Stock Assessment, IOTC), Dr. Shijie Zhou (Invited Expert, CSIRO) and Dr. Chris O'Brien (Regional Coordinator, BOBLME). A total of 30 participants attended the workshop.
19. The 2nd Workshop was delivered by staff of the IOTC Secretariat, namely Rondolph Payet (Executive Secretary), Dr. David Wilson (Deputy Secretary/Science Manager) and Dr. Rishi Sharma (Fishery Officer – Stock Assessment,). A total of 15 participants attended the workshop.

4.4 Data-related activities

20. A large proportion of the Data Section staff time is currently devoted to the acquisition and editing of the data required under the IOTC Resolutions. These data are utilised in monitoring compliance or in scientific analyses necessary for the assessment of the status of stocks. The IOTC databases are constantly revised and updated. Due to many other commitments, the IOTC Secretariat was unable to finalize work on the migration of data from the previous to the new IOTC database, as initially planned. In 2014 the IOTC Secretariat considered alternative options, including hiring of an IT Consultant to assist the IOTC Secretariat with this work. Although the IOTC has allocated funds from its regular budget to start this activity it is likely that more resources will be required in the future. Database IT work will continue in 2015. The IOTC Secretariat will report progress concerning this activity to future meetings of the Scientific Committee.
21. The regular suite of datasets have been supplied for all scientists engaged in stock assessment activities and reports on status of IOTC databases produced for relevant Working Parties and SC, and for the preparation of the Country Reports of the Compliance Committee. In addition to the standard fishery datasets, the Secretariat has updated the tagging datasets to incorporate new information.

4.4.1 Data-related activities: Capacity building and other initiatives

22. The IOTC Secretariat continues facilitating support to developing coastal states using funds from the IOTC or other collaborating agencies ([Table 5](#)). In particular, the OFCF has provided resources and advice for the strengthening of data collection systems in more than 20 countries in the region since its inception in 2002. In addition, the IOTC Secretariat is cooperating with COI-SmartFish, the BOBLME Project, the ABNJ Project, the ISSF, and other initiatives in the coordination and execution of capacity building activities in developing coastal states of the Indian Ocean.

23. Following is a summary of the capacity building activities undertaken since the end of SC15⁵:

- a) Support to data collection and management activities in Comoros
- b) Support to the implementation of pilot sampling in Madagascar
- c) Review of Data Collection and Processing Systems for the Longline Fisheries of Indonesia
- d) Support to Data Collection and Management activities in Sri Lanka
- e) Data Mining Neritic Tuna in Malaysia
- f) Review of data collection and management systems artisanal fisheries of West Sumatra, Indonesia
- g) Data Collection Workshop West Sumatra
- h) Workshop on Compliance with IOTC Data Requirements
- i) Review of data collection and management systems artisanal fisheries of Bali and East Java, Indonesia
- j) Pilot sampling activities North and West Sumatra (Indonesia)
- k) Data Mining Neritic Tuna in Thailand
- l) Data Collection Workshop Bali and East Java (Indonesia)

Table 5. Missions of staff from the IOTC Secretariat during 2014 in relation with capacity building activities in the Indian Ocean.

Country	Date	Staff	Description
Sri Lanka	Jan 2014	IOTC Data Coordinator BOBLME IT Manager	Support to data collection and data management activities in Sri Lanka
Malaysia	Jan 2014	IOTC Fisheries Statistician OFCF Project Manager	Data mining neritic tuna in Malaysia
Indonesia	Feb 2014	IOTC Consultant OFCF Project Manager	Review of data collection and management systems artisanal fisheries of West Sumatra, Indonesia
Indonesia	Feb 2014	IOTC Data Coordinator IOTC Consultant OFCF Project Manager	Data collection Workshop West Sumatra Indonesia
Italy	Mar 2014	Executive Secretary IOTC Data Coordinator	ABNJ Inception Workshop
Mauritius	Mar 2014	IOTC Data Coordinator IOTC Fisheries Statistician IOTC Data Assistant	Workshop on Compliance with IOTC Data Requirements, Mauritius
Indonesia	May 2014	IOTC Consultant	Review of data collection and management systems artisanal fisheries of Bali and East Java, Indonesia
Indonesia	Jul 2014	IOTC Data Coordinator IOTC Consultant OFCF Project Manager	Pilot sampling activities North and West Sumatra, Indonesia
Thailand	Jul 2014	IOTC Fisheries Statistician OFCF Project Manager	Data Mining neritic tuna in Thailand
Belgium	Sep 2014	IOTC Data Coordinator	FAO iMarine Project & Meetings at EU DG Mare
Indonesia	Oct 2014	IOTC Data Coordinator OFCF Project Manager	Data collection Workshop Bali & East Java, Indonesia

4.4.2 Data related activities: Other (2014)

24. The IOTC Secretariat is responsible for the coordination of activities concerning the global Consolidated List of Authorized Vessels (CLAV), a regularly updated list including the authorized vessels of the five t-RFMOs. Collaboration between the IOTC Secretariat and FAO-FIPS continued in 2014. In 2014, the CLAV has been further enhanced using funds from a Global Environmental Facility Project on Sustainable Management of Tuna Fisheries and Biodiversity: Conservation in the Areas Beyond National Jurisdiction (ABNJ). The main objective of the CLAV component of the Project is ensuring that updates of the CLAV occur in as close-to real time as possible in the future.

25. In March 2014, the ABNJ invited the IOTC Secretariat to attend its inception workshop and present a plan of action for the CLAV. The Workshop endorsed the plan presented by the IOTC Secretariat and agreed that the

⁵ For more information on these activities refer to: IOTC capacity building activities in support of developing coastal IOTC CPCs: 2014 activities. IOTC–2014–WPDCS10–08, or email: secretariat@iotc.org.

IOTC Secretariat should coordinate this activity. The Executive Secretaries of all tuna-RFMO Secretariats agreed to cooperate with the activities proposed. Work on the CLAV is being carried out by two experts, a CLAV IT Expert and a CLAV Specialist, which were hired to set up near real time procedures for the CLAV and maintenance of the system for a period of six months. CLAV activities are ongoing and will extend until July 2015. The development work has however been completed and will be launched in 2015. Arrangements for maintenance of the CLAV following the end of ABNJ support will be discussed at the next meeting of ABNJ's steering committee

4.5 Stock assessment

4.5.1 Stock assessment: Training

26. A four day workshop was held in Cape Town, South Africa covering numerous topics on stock assessment. The course was delivered by Dr. Rishi Sharma (IOTC Secretariat), Dr. Dave Kolody (CSIRO, Australia) and Dr. Aaron Berger (NOAA, USA) on stock assessment methodology and what kind of data should be collected and for what purposes. The overall objective of the workshop was three-fold:

- To convey the basic understanding of data collection programs and their use;
- To demonstrate how these could be used in an assessment through population dynamic models;
- To convey basic interactions of fish within an ecosystem.

27. Material presented in the workshop can be accessed at the following website link: (<http://iotc.org/meetings/2nd-sciencestock-assessment-workshop>). Workshop effectiveness was evaluated with a feedback survey and there was a clear demand for more such trainings in the region.

4.5.2 Stock assessment: Analysis

28. Following the recommendation of the Working Party on Tropical Tunas in 2013, which was endorsed by the Scientific Committee at its 15th Session, a Stock Assessment consultant (Dr. Simon Hoyle) was hired again to conduct stock assessment analyses on albacore tuna, rather than tropical tuna in 2014.

29. A total of seven stock assessment related papers were presented by the IOTC Secretariat as primary authors ([Appendix III](#)). An analysis of the recent history of the assessments considered at the Working Parties in the past five years, reveals the value of a mixed approach in which contributions from scientists from CPCs (19) are supplemented by contributions from the IOTC Secretariat (13 and collaboration in another 9), consultants (five) or external invited experts (12 assessments). In particular, given that national scientists usually have a limited time allotted to analyses for IOTC stocks every year due to their other commitments, having stock assessment expertise at the IOTC Secretariat guarantees that there is full time attention given to the assessment work during most of the year, in addition to the training and support given through collaborative work with national scientists.

30. In addition, follow-up to the first CPUE workshop was facilitated by the IOTC Secretariat in dealing with contrary signals of abundance for major tropical species for some longline fleets. Stock assessment consultant Dr. Simon Hoyle (with funding provided by ISSF) worked with the two countries to resolve these issues and two papers were presented on this topic at WPTT.

4.5.3 Management Strategy Evaluation

31. The IOTC WPM had been tasked with resolution 13/10 and Resolution 14/03 that pertain to managing IOTC stocks with target and limit reference points, and to undertake the process of a management strategy evaluation that conserves these stocks in the long run. To this avail, the IOTC Secretariat has undertaken multiple capacity building exercise with ABNJ funding to address capacity limitations from coastal CPC's in understanding the process and the overall objectives of this exercise.

32. Two separate workshop were held, both in Sri Lanka (Beruwala April 21st to 24th, and May 31st, 2014), in which the IOTC stock assessment expert assisted in capacity building exercises with the countries. A report was prepared by the Secretariat on the 31st May Workshop ([Appendix III](#)). In addition, the stock assessment trainings and science and policy workshops also addressed some of the building blocks of this process at two separate meetings in Thailand, and South Africa respectively.

33. Finally operating models for two species, namely albacore and skipjack tuna, were developed with assistance from the IOTC Secretariat and 3 papers on this subject were presented at the Working Party Methods.

4.6 Contacts with other scientific organisations

34. The IOTC Secretariat routinely maintains contacts with other organisations in the region with the purpose of coordinating scientific activities to the extent possible. This is essential to avoid duplication of efforts with similar organisations. The Executive Secretary and Deputy Secretary maintain regular contacts with the other tuna

RFMOs (CCSBT, IATTC, ICCAT, and WCPFC), although in recent years have not participated in the meetings of the other tuna RFMOs due to budgetary constraints.

4.7 IOTC publications and information products

4.7.1 Documents

35. In 2014, the IOTC Secretariat produced 64 (51 in 2013, 49 in 2012) papers/reports ([Appendix II](#)) in support of the IOTC Science process, not including the reports of the various working parties (7) or the Executive Summaries (25).

4.7.2 IOTC Website

36. The IOTC website continues to be a portal for communicating science related information to a variety of audiences. The Secretariat has completed the development of a new website, as requested by the Commission. New additions to the website in 2014 include:

- **Stock status dashboard:** <http://iotc.org/science/status-summary-species-tuna-and-tuna-species-under-iotc-mandate-well-other-species-impacted-iotc>
- **NPOA webpages:** <http://iotc.org/science/status-of-national-plans-of-action-and-fao-guidelines>
- **IOTC Data Summary:** Set up of IOTC Database online querying and reporting tools in the IOTC Web Page. Following a recommendation from the IOTC Scientific Committee to resume publication of the IOTC Data Summary in electronic format, in 2014 the IOTC Secretariat hired the services of an IT Consultant to set up online tools in the IOTC Web Page to facilitate users' querying of the IOTC database and generation of reports. The first Phase to set up querying and reporting tools for nominal catch and fishing craft statistics data has been completed; a second phase to set up querying and reporting tools for catch-and-effort data, including generation of catch, effort, and CPUE is planned for late-2015/early-2016.
- There is still the need for CPCs to provide the IOTC Secretariat with their on-going activities relating to the work plan of the Commission for publication on the website.

4.7.3 Identification cards – sharks, seabirds, marine turtles, billfish and tunas

37. Following recommendations from the Working Party on Ecosystem and Bycatch and the Scientific Committee to develop identification cards for sharks, marine turtles and seabirds, the Secretariat has developed, finalized and printed the identifications cards for sharks, seabirds, marine turtles and billfish, thanks to the help of the following experts:
- **Sharks** – The SPC, Jipé Le-Bars. Evgeny Romanov, Charles Anderson Rui Coelho and Bernard Seret
 - **Seabirds** – Birdlife International and the Secretariat of ACAP
 - **Marine turtles** – The Secretariat of the IOSEA MoU, IFREMER and KELONIA
 - **Tunas** – D.Itano, C. Anderson and E. Romanov (CAPRUN-ARDA)
 - **Billfish** – Hugues Evano (IFREMER) and Evgeny Romanov (CAP RUN/ARDA)
38. The identification cards are intended to be used primarily by scientific observers under the framework of the IOTC Regional Observer Scheme (Resolution 11/04 on a Regional Observer Scheme), however they could also be distributed and used by fishers and port-samplers in order to record and accurately report tuna and tuna-like species catches as well as interactions with sharks, marine turtles and seabirds.
39. Species identification cards have been developed and printed in both English and French. A total of 1000 shark and 1000 turtle ID cards have already been distributed and so a further 1000 copies of each have been printed to meet demand. A recent survey suggested that the majority of ID cards are being used by fishers to complete logbook entries, port samplers, scientists/managers and onboard observers. With the progress in establishing observer schemes, further requests for ID cards for observers are expected to continue.
40. The Scientific Committee made specific requests at its 16th and 17th sessions for the further translation of the species ID guides into additional languages which were ranked in terms of priority. This is summarised in [Table 6](#). Requests were sent to the experts in the relevant CPCs in 2014 for translations to be undertaken as due to the limited Member contributions received, there was no funding from the regular budget for this task. To date, translations have been completed for tuna, tuna-like and billfish species into Bahasa Indonesia with support from the OFCF project and for marine turtle guides into Spanish with support from IOSEA.

Table 6. Priority languages for translation of species ID guides as identified by the Scientific Committee (SC16 & SC17). Those highlighted in bold have been completed.

Language	1. Tuna & like	2. Billfish	3. Turtles	4. Sharks and rays	5. Seabirds
Farsi	2	1	1	1	1
Arabic	2	2	2	2	2
Urdu	4				
Bahasa Indonesia	1	3	5	5	5
Swahili		4			
Spanish		5	3	3	3
Portuguese		6	4	4	4
Thai		7			
Sinhala	3	8			
Tamil		8			
Bahasa Malaysia	1				
Hindi	3				

41. A poll sent to the IOTC science and NGO mailing lists suggested that the development of an electronic version of the ID cards (e-book format) could be a useful additional resource to be phased in alongside the hard copies of the cards. This would be an expanded version of the current guides containing more explanation and detail, including identification guides for dead and processed specimens, as well as diagrams and identification keys pointing out identification features.

5. SUPPORT TO COMPLIANCE ACTIVITIES

42. The compliance-related activities continue to expand and represent a load comparable to the support of scientific activities, as the Commission has expanded its reporting requirements with the adoption of new resolutions. The IOTC Secretariat has continued to devote a significant portion of time in 2014 to provide support to CPCs to meet their obligations to the Commission, including conducting compliance support missions to some of the Member countries.
43. The requirement for support by the Compliance Committee continues to expand. This required the submission of compliance questionnaires, according to the requirements of the Commission, to all CPCs, and the processing of the responses, and the information available from national reports, into Country Reports to be presented at the 12th Session of the Compliance Committee. This has resulted in a total of almost 70 documents to process for the Compliance Committee, with a measurable increase in the workload of the Secretariat.
44. Data revisions related to updates in the IOTC Record of Authorised Vessels have increased significantly and often required special attention from the IOTC Secretariat to ensure the correctness of the Record of Authorised Vessels. Other data submissions, such as the scientific data to be utilized in stock assessments, continue to require considerable processing and validation before they are integrated into the IOTC databases. This processing phase, in most cases, is a major task of the Secretariat as it often leads to several requests for clarifications from data liaison officers.
45. The maintenance of an IOTC Record of Active Vessels, so far a unique record amongst the tuna regional fishery bodies, requires also active involvement of the staff of the IOTC Secretariat, as submissions from various parties often reveal discrepancies and inconsistencies that the staff attempts to resolve through contacts with the various parties involved.
46. The IOTC Secretariat also continued with the coordination of the implementations of the Regional Observer Programme to monitor transshipment at sea for large-scale tuna longline vessels. With greater focus being placed on using the data from this Programme to identify possible infractions, the IOTC Secretariat now have to identify and point out possible infractions to the fleets participating in the Programme. In the second semester of 2014, the IOTC Secretariat, through the FAO, launched a new tender for the ROP for 2015; this was won by the Consortium MRAG Ltd/CapFish cc. The new contract was signed in December 2014
47. At its 16th Session, the Commission adopted the Resolution 12/10 to promote implementation of conservation and management measures already adopted by the IOTC. The Resolution states that “*The Commission shall establish a special fund for capacity building in order to ensure compliance with Conservation and Management Measures. This special fund shall be financed by voluntary contributions. The Secretariat shall contact international organizations, donor agencies and nongovernmental organizations to seek voluntary financial contribution*”.

48. Since the adoption of the Resolution 12/10, the IOTC Secretariat has developed project concept notes and has received financial support or cooperative arrangements, in order to undertake several compliance support missions and training in the implementation of the IOTC port State measures resolution (Resolution 10/11).

5.1 Capacity building activities: Compliance Support Missions

49. The main concept in the capacity building efforts is that of Compliance Support Missions (CSM), that are intended to bring the work of the Commission and the Compliance Committee closer to the CPCs. The CSM are a combination of capacity building and planning exercise to engage in activities that would support the issues that were identified during the review of country based Compliance Report at the last session of the Compliance Committee.
50. The CSMs are carried by the IOTC Secretariat (Compliance Section) over a period of approximately one week, to an audience composed of national officers in offices involved in the implementation of IOTC Resolutions. The outcome is a Compliance Action Plan and an agreed timeline with the CPC on addressing outstanding compliance issues.
51. A report on the outcome of these collaborative actions may be presented by the CPCs to the Compliance Committee, establishing a baseline from which to measure progress in the strengthening of compliance.
52. To date, fifteen CSM have been successfully conducted in the following countries: Comoros, India, Indonesia, Kenya, Madagascar, Malaysia, Mauritius, Mozambique, Oman, Seychelles/Somalia, South Africa, Sri Lanka, Tanzania and Thailand. Further missions are planned for other countries during 2015. (including follow up missions).

5.2 Capacity building activities: Training in Port State Measures Resolution

53. The other component is specific to the implementation of Resolution 10/11 on Port State Measures to prevent, deter and eliminate illegal, unreported and unregulated (IUU) fishing. This training is primarily intended for field personnel and their supervisors, as it focuses more in the operational aspects of the Resolution on Port State Measures.
- a) Implement at national level, a training course for government officials on IOTC Port State Measures for CPCs in the region.
 - b) Develop an information system on port States Measures to facilitate the sharing of information as required by the Resolution 10/11.

5.3 Funding of these activities

54. Funding for these activities are being provided through cooperation with several initiatives, following presentation of the capacity building initiatives to potential financing agencies. The IOTC Secretariat has:
- a) signed a Grant Agreement with the European Union for the provision of 120.000 € to finance the Compliance Support Missions and other activities in 2014.
 - b) received financing from the following agencies/projects:
 - Indian Ocean Commission's SmartFish Programme, financed under the 10th European Development Fund) (financing to undertake, in qualifying countries, Compliance Support Missions and National PSM training courses),
 - World Bank Project (under Global Partnership for Oceans) through the Indian Ocean Commission (financing to undertake, in qualifying countries, Compliance Support Missions, to develop the PSM information Sharing System and to develop template for fisheries legislation),
 - The FAO Project "Sustainable management of tuna fisheries and biodiversity conservation in the Areas Beyond National Jurisdiction (ABNJ)" supported by the Global Environmental Facility (GEF), (on further development of CLAV, template for national PSM legislation, various capacity building activities.
55. The Compliance Section continues to also participate actively in the pilot project Fish-I Africa, a partnership between Comoros, Kenya, Mozambique, Seychelles and Tanzania, supported by the Pew Charitable Trust. It connects partners on a real-time basis to share information and intelligence to enable them to make decisions and take action against suspected illegal operators. [Table 7](#) summarises all the missions relating to compliance.

Table 7. Missions relating to Compliance Activities in 2014

Country	Date	Staff	Description
Malaysia	10-14 Feb	Executive Secretary/Compliance Coordinator/ Compliance Officer	Regional workshop to support the implementation of the Resolutions of the Indian Ocean Tuna Commission
Sri Lanka	04–07 Mar.	Compliance Officer	Follow-up Compliance Support Mission & implementation of PSM
South Africa	01-04 Apr	Compliance Officer/IT Consultant	PSM IS Validation Workshop
	17-20 Jun	Compliance Coordinator/ Compliance Officer	Compliance Support Mission
	23-27 Jun	Compliance Officer	PSM training course
Mozambique	30 Jun-4 Jul	Compliance Officer	Follow-up Compliance Support Mission & implementation of PSM
Thailand	18-22 Aug	Compliance Coordinator/ Compliance Officer	Compliance Support Mission
	25-29 Aug.	Compliance Officer	PSM training course
Seychelles/ Somalia	8–10 Sep.	Compliance Coordinator/ Compliance Officer	Compliance Support Mission
Malaysia	16-19 Sep	Compliance Coordinator/Compliance Officer	Compliance Support Mission
	22-26 Sep	Compliance Officer	PSM training course
India	18-21 Nov.	Compliance Coordinator/Compliance Officer	Compliance Support Mission
Tanzania	10-12 Dec	Compliance Coordinator	Follow-up Compliance Support Mission & implementation of PSM

6. COMMUNICATIONS AND PUBLIC INFORMATION

6.1 Documents (papers and reports)

56. The IOTC Secretariat continues with the publications of all reports of the Commission and its subsidiary bodies (Working Parties and Committees). All reports are currently published in electronic format only, following the decision by the Commission at its 17th Session to go paperless.

6.2 IOTC Website

57. The IOTC website continues to be a portal for communicating science related information to a variety of audiences. The Secretariat has completed the development of a new website, as requested by the Commission and came online in March 2014.

7. SUPPORT TO MEETINGS

7.1 Logistic support in the facilitation of meetings

58. The IOTC Secretariat worked with several translators in 2014 for the provision of translation services, and preparation of documents in both languages of the Commission for the Sessions of the Commission, Compliance Committee, Standing Committee on Administration and Finance, the Scientific Committee and all IOTC Circulars and supporting information. In order to reduce staff costs, the translation of documents to the official languages of the Commission (English and French) has been outsourced as necessary. Unless there is a substantial increase in the workload relating to translation, the current approach is an effective way of proceeding under the current budget limits.

59. The IOTC Secretariat has been liaising with local institutions, hotels, service providers, tour operators for the organization working parties and other IOTC meetings in 2014, which were held in four (4) different countries in addition to Seychelles.

7.2 Preparation of reports

60. The IOTC Secretariat staff provided the necessary support to all IOTC meetings in 2014 related to the development and dissemination of meeting reports. In 2014, all IOTC meeting reports were developed, finalised and disseminated efficiently and in a short timeframe to ensure CPCs had access to the most recent meeting findings and recommendations soon after the completion of a meeting (usually within one week).

8. INFORMATION TECHNOLOGY

61. The provision of computer infrastructure, including maintenance of the network and servers, as well as Internet support was providing by a consultant paid under the provisions of Headquarters Agreement with the Republic of Seychelles. These services were also extended to general meeting support and website maintenance.

9. ADMINISTRATION

62. The personnel and financial administration of the IOTC is managed through the FAO ERP system called the GRMS. This includes the administration of extra-budgetary funds, travel arrangements, general logistical support to the activities of the technical sections, as discussed in detail in SCAF12 papers (03 and 05)

10. PROGRESS ON RECOMMENDATIONS FROM SCAF11

63. At the 11th Session of the SCAF in 2014, CPCs agreed on a series of actions to be taken by CPCs and the IOTC Secretariat on a range of issues. The subsequent table developed and agreed to by the SCAF11 was provided to the Commission at its 18th Session for its endorsement. Provided at [Appendix IV](#) is an update on the progress made in implementing the recommendations from the previous SCAF meeting, which were endorsed by the Commission (S18).

11. OTHER ACTIVITIES

11.1 *Contacts with other organisations*

64. The IOTC Secretariat routinely maintains contacts with other organisations in the region with the purpose of coordinating scientific activities to the extent possible. This is essential to avoid duplication of efforts with similar organisations. The Executive Secretary and Deputy Secretary maintain regular contacts with the other tuna RFMOs (CCSBT, IATTC, ICCAT, and WCPFC), although in 2014, did not participate in the meetings of the other tuna RFMOs due to budgetary constraints.

The Compliance Manager of CCSBT spent three days in December, 2014, working with her counterparts in the IOTC Secretariat. The objective of the working visit was to discuss compliance matters relevant to both RFMOs.

65. The IOTC Secretariat maintains close links with the Indian Ocean Commission (IOC) primarily through the discussions of possible future coordination and cooperation in fisheries projects involving tuna fisheries. The IOTC Secretariat is currently involved in a number of joint activities with the IOC Project Integrated Regional Fisheries Strategy (IRFS) also known as SmartFish, mostly on Compliance issues, but it is expected that there will be collaboration on data-collection activities between the IRFS and IOTC.
66. The IOTC Secretariat also maintains close links with a number of NGO, such as INFOFISH, WWF, INPLF, PEW Fellowship and ISSF. On invitation, and budget allowing, the IOTC Secretariat has attended some of their meetings.
67. The IOTC Secretariat, together with the Secretariats of the other tuna RFMOs, continued to cooperate with FAO during 2014 in the formulation of the project “Sustainable management of tuna fisheries and biodiversity conservation in the Areas Beyond National Jurisdiction (ABNJ)” supported by the Global Environmental Facility (GEF), with the following objectives: To achieve efficiency and sustainability in tuna production and biodiversity conservation in the ABNJ, through the systematic application of an ecosystem approach in tuna fisheries for : (i) supporting the use of sustainable and efficient fisheries management and fishing practices by the stakeholders of the tuna resources, (ii) reducing illegal, unreported and unregulated (IUU) fishing, and (iii) mitigating adverse impacts of bycatch on biodiversity. The execution of the project has progressed well, in particular with the development of the CLAV, funding the development of a PSM legal template and also funding some Compliance Support Missions.
68. The Southwest Indian Ocean Fishery Commission (SWIOFC) is an advisory body under the FAO umbrella that deals with non-tuna species in the EEZ of the member countries. The SWIOFC does have not a mandate to manage tuna fisheries but contribute actively to the work of IOTC and assist in its management actions, so coordination is essential. To the extent possible the IOTC Secretariat attends the meetings of the organization such as the Commission, the Scientific Committee, and the Working Party on Collaboration and Cooperation in Tuna Fisheries.

APPENDIX I

2014 PROGRAMME OF WORK

Capacity building activities proposed by the 16th Session of the IOTC Scientific Committee for the year 2014 and approved by S18

Source	Objective/ Recommendation	Progress
SC Recommendation SC16.10 (para. 32)	The SC RECOMMENDED that the Commission increase the IOTC Capacity Building budget line so that capacity building workshops/training can be carried out in 2014 and 2015 on the collection, reporting and analyses of catch and effort data for neritic tuna and tuna-like species. Where appropriate this training session shall include information that explains the entire IOTC process from data collection to analysis and how the information collected is used by the Commission to develop Conservation and Management Measures.	Completed: The Commission approved US\$11,000 for this purpose in 2014 and US\$36,000 in 2015. In 2014, activities included co-financing a Regional Workshop on Compliance with IOTC Data Requirements, Mauritius, attended by 13 coastal countries. In addition, Data Mining missions were also conducted by the IOTC-OFCF Project in Malaysia and Thailand to improve the collection and reporting of neritic tunas and tuna-like species. Two Science to management workshops were also held in 2014.
SC Recommendation SC16.15 (para. 39)	The SC RECOMMENDED that the Commission allocate funds in its 2014 and 2015 budgets for the IOTC Secretariat to facilitate training for CPCs having gillnet fleets on bycatch mitigation methods, species identification, and data collection methods (budget estimate: Table 4).	Pending: The Commission approved US\$19,000 for this project in 2014 and a further US\$36,000 for 2015. This activity did not materialise in 2014 and will be undertaken in 2015. Moreover, due to limited contributions received from Members in 2014, this project has been deferred until 2015, as and when the 2014 late contributions have been received.
S18 (para. 21)	The Commission AGREED to initiate a consultative process among managers, stakeholders and scientists to begin discussions about the implementation of an MSE in the IOTC. This activity will also receive some co-financing by the ABNJ Tuna Project. This has not been determined yet.	Ongoing: A first meeting was organised prior to the 17 th Session of the Commission in Sri Lanka. ABNJ project is supporting this activity.
SC Recommendation SC16.66 (para. 178)	The SC RECOMMENDED that the Commission considers funding of future activities under the Regional Observer Scheme, by allocating specific funds to the implementation of capacity building activities in developing coastal countries of the IOTC Region, as detailed in Table 17 of the SC 16 Report.	Ongoing: Due to limited contributions received from Members in 2014, this project has been deferred until 2015, as and when the 2014 late payments are received. However, a regional workshop is planned to take place in Oman in June 2015.

Consultancies for the year 2014

Source	Objective/ Recommendation	Progress
SC16.18(para. 42)	The SC RECOMMENDED that the IOTC Secretariat facilitate a process to develop standardised sampling protocols for bycatch species which are thought to be heavily impacted by IOTC fisheries. The protocols established by the WCPFC may be a useful starting point. Given the lack of staffing resources at the Secretariat to undertake the work directly, the Commission may wish to allocate sufficient funds in its 2014 budget to hire a consultant to undertake this work, under the guidance of the Secretariat. The primary aim would be to assist CPCs to gather information in a consistent way that would lead to improved assessments of fisheries impacts on species, species groups and ecosystems. An approximate budget is provided in Table 6.	Pending: Originally intended for 2014, the Commission at its 18 th Session allocated US\$25,000 for this activity in its 2015 budget, when it will now be undertaken.
SC Recommendation SC16.48 (para. 110)	The SC NOTED the plans from the IOTC Secretariat to resume publication of the IOTC Data Summary in electronic form, including work on the set-up of an online querying facility in the IOTC Web Site, which will allow site users to filter nominal catch and catch-and-effort data using a range of criteria and visualise the output in table or graphic format, including different types of charts, figures and maps. The work will facilitate the use of information in the IOTC Databases by the general public. The SC RECOMMENDED that the IOTC Secretariat carries out this work during 2014 and presents the new system to the next meeting of the WPDCS for suggested improvements.	Ongoing: The Commission approved US\$10,000 for this project in 2014 under the IOTC budget, and a further US\$25,000 for 2015. A consultant was recruited in October 2014 to develop Phase I of the online querying facility in the IOTC Web site. This was launched in March 2015 and a Phase II to include the mapping requirements of the Scientific Committee, will be undertaken in 2015, using the US\$25,000 allocated by the Commission.
SC Recommendation SC16.43 (para. 92)	The SC NOTED the excellent work done by IOTC consultants in 2013 on a range of projects from Management Strategy Evaluation to the bigeye tuna SS3 stock assessment, and RECOMMENDED that their engagement be renewed for the coming year to supplement the skill set available within IOTC CPCs. The stock assessment of albacore and yellowfin will be carried in 2014 and 2015 respectively.	Completed: The Commission approved US\$24,000 for this project in 2014 under the IOTC budget, and a further US\$24,000 for 2015. 2014: Mr Simon Hoyle undertook the albacore stock assessment, which was complete in 2014.
S 17 Recommendation (para 101)	The Commission AGREED that a second Performance Review of the IOTC be undertaken in 2014, with terms of reference to be developed by interested CPCs and circulated for wider agreement via an IOTC Circular.	Ongoing: First meeting of the 2 nd Performance review took place in Seychelles from 6-10 February 2015.
SC Recommendation SC16.72: (para 206)	Renewal of data entry under the ASFA Partnership Agreement. To clear the backlog the Secretariat will contract one of the ASFA input centres to carry out the activity in 2014 and 2015.	Ongoing: Low priority

Science education, translation and publication activities for the year 2014

Source	Objective/ Recommendation	Progress
SC Recommendation SC16.57 (para 141)	Billfish identification cards: The SC EXPRESSED its thanks to the IOTC Secretariat and other experts involved in the development of the identification cards for billfish and RECOMMENDED that the cards be translated into the following languages, in priority order: Farsi, Arabic, Indonesian, Swahili, Spanish, Portuguese, Thai and Sri Lankan, and that the Commission allocate funds for this purpose. The Secretariat should utilise any remaining funds in the IOTC Capacity Building budget line for 2013 to translate the cards.	Ongoing: Translation has been completed for Bahasa Indonesian and requests have been made to the relevant CPCs for translation into the other priority languages. As there were no remaining funds in the IOTC Capacity Building budget line to allocate towards this work it is being conducted with the support of CPCs and external organisations. The Commission at its 18 th Session approved US\$12,000 for this purpose in 2014. Due to limited contributions received from Members in 2014, this project has been deferred until 2015, when late 2014 contributions will be used as approved by the Commission.
SC Recommendation SC16.59 (para. 143)	Shark, marine turtle and seabird identification cards: The SC EXPRESSED its thanks to the IOTC Secretariat and other experts involved in the development of the identification cards for marine turtles, seabirds and sharks and RECOMMENDED that the cards be translated into the following languages, in priority order: Farsi, Arabic, Spanish, Portuguese and Indonesian, and that the Commission allocate funds for this purpose.	Pending: The Commission at its 18 th Session approved US\$12,000 for this purpose in 2014, however, due to limited contributions to allocate towards this work it is being conducted with the support of CPCs and external organisations. Due to limited contributions received from Members in 2014, this project has been deferred until 2015, when late 2014 contributions will be used as approved by the Commission. However, the IOTC Secretariat has contacted relevant CPCs and external experts to assist with translations.
SC Recommendation SC16.61 (para. 146)	Tuna identification cards: The SC RECOMMENDED that the Commission allocate additional funds in the 2014–15 budget to translate and print sets of identification cards for the three tropical tuna, two temperate tuna, and six neritic tuna and seerfish species under the IOTC mandate, noting that the total estimated production and printing costs for 1000 sets of the identification cards is around a maximum of US\$16,200. The IOTC Secretariat shall seek funds from potential donors to print additional sets of the identification cards at US\$5,500 per 1000 sets of cards.	Ongoing: The Commission at its 18 th Session approved US\$12,000 for this purpose in 2014, however, due to limited contributions to allocate towards this work it is being conducted with the support of CPCs and external organisations, the Secretariat has contacted relevant CPCs and external experts to assist with translations. The tuna and tuna-like species ID cards have been translated into Bahasa Indonesia with the assistance of the OFCF project. We have contacted some CPCs to help with the translation to reduce the cost.

Source	Objective/ Recommendation	Progress
SC Recommendation SC16.62 (para. 147)	<p>Fishing hook identification cards</p> <p>NOTING the continued confusion in the terminology of various hook types being used in IOTC fisheries, (e.g. tuna hook vs. J-hook; definition of a circle hook), the SC RECOMMENDED that the Commission allocate funds in the 2014-15 IOTC Budget to develop an identification guide for fishing hooks and pelagic fishing gears used in IOTC fisheries. The total estimated production and printing costs for the first 1000 sets of the identification cards is around a maximum of US\$16,500. The IOTC Secretariat shall seek funds from potential donors to print additional sets of the identification cards at US\$5,500 per 1000 sets of cards.</p>	<p>Pending: The Commission at its 18th Session approved US\$16,500 for this task in 2014 under the IOTC budget.</p> <p>Due to limited contributions received from Members in 2014, this project has been deferred until 2015 when late contributions are received.</p>

Development of Program of Work (Sharks)

Source	Objective/ Recommendation	Progress
SC Recommendation SC16.33 (Para 74)	The SC ENDORSED the Indian Ocean Shark Year Program (multi-year research initiative) provided at Appendix I of paper IOTC–2013–SC16–18 and RECOMMENDED that a detailed multi-year shark research program be prepared (by a small group of shark experts and the IOTC Secretariat) covering the various aspects raised in paper IOTC–2013–SC16–18. The IOTC budget for 2014 should include funding support to allow the small group of shark experts and the IOTC Secretariat to attend a short ad-hoc meeting.	Completed: Meeting held in Portugal in May 2014.

APPENDIX II

LIST OF CHAIRS, VICE-CHAIRS AND THEIR RESPECTIVE TERMS FOR ALL IOTC SCIENCE BODIES

Group	Chair/Vice-Chair	Chair	CPC/Affiliation	1 st Term commencement date	Term expiration date (End date is until replacement is elected)	Comments
Commission	Chair	Mr Daroomalingum Mauree	Mauritius	21 Apr-2011	End of Com. in 2015	2 nd term
	Vice-Chair	Dr Ahmed Mohammed Al-Mazroui Mr Jeongseok Park	Oman Rep. of Korea	10-May-13	End of Com. in 2015	1 st term
CoC	Chair	Mr Herminio Tembe	Mozambique	4-May-13	End of CoC in 2015	1 st term
	Vice-Chair	Mr Hosea Gonza Mbilinyi	Tanzania	4-May-13	End of CoC in 2015	1 st term
SCAF	Chair	Dr Benjamin Tabios	Philippines	10-May-13	End of SCAF in 2015	1 st term
	Vice-Chair	Vacant	Vacant	Vacant	Vacant	Vacant
TCAC	Chair	Mr Daroomalingum Mauree	Mauritius	21-Apr-11	End of Com. in 2015	2 nd term
	Vice-Chair	Vacant	Vacant	Vacant	Vacant	Vacant
SC	Chair	Dr Tsutomu Nishida	Japan	17-Dec-11	End of SC in 2015	2 nd term
	Vice-Chair	Mr Jan Robinson	Seychelles	17-Dec-11	End of SC in 2015	2 nd term
WPB	Chair	Dr Jerome Bourjea	EU,France	08-Jul-11	End of WPB in 2015	2 nd term
	Vice-Chair	Dr Miguel Santos	EU,Portugal	08-Jul-11	End of WPB in 2015	2 nd term
WPTmT	Chair	Dr Zang Geun Kim	Korea, Rep. of	22-Sep-11	End of WPTmT in 2016	2 nd term
	Vice-Chair	Dr Takayuki Matsumoto	Japan	06-Sep-12	End of WPTmT in 2016	2 nd term
WPTT	Chair	Dr Shiham Adam	Maldives, Rep. of	19-Nov-14	End of WPTT in 2016	1 st term
	Vice-Chair	Dr Gorka Merino	EU,Spain	19-Nov-14	End of WPTT in 2016	1 st term
WPEB	Chair	Dr Rui Coelho	EU,Portugal	16-Sept-13	End of WPEB in 2015	1 st term
	Vice-Chair	Dr Evgeny Romanov	EU,France	27-Oct-11	End of WPEB in 2015	2 nd term
WPNT	Chair	Dr Prathibha Rohit	India	27-Nov-11	End of WPNT in 2015	2 nd term
	Vice-Chair	Dr Farhad Kaymaram	I.R. Iran	27-Nov-11	End of WPNT in 2015	2 nd term
WPDCS	Chair	Dr Emmanuel Chassot	EU,France	30-Nov-13	End of WPDCS in 2015	1st term
	Vice-Chair	Mr Stephen Ndegwa	Kenya	12-Dec-14	End of WPDCS in 2016	1 st term
WPM	Chair	Dr Iago Mosqueira	EU,Spain	18-Dec-11	End of WPM in 2015	2 nd term
	Vice-Chair	Dr Toshihide Kitakado	Japan	18-Dec-11	End of WPM in 2015	2 nd term

APPENDIX III

LIST OF PAPERS WITH PARTICIPATION FROM IOTC SECRETARIAT STAFF IN THE YEAR 2014

Document number	Title
<i>11th Session of the Compliance Committee</i>	
IOTC-2014-CoC11-03 Rev1	Summary Report on the level of Compliance
IOTC-2014-CoC11-04a Rev1	IOTC Regional Observer Programme for at-sea transshipments – Secretariat's Report
IOTC-2014-CoC11-05 Rev1	Review of reference fishing capacity and fleet development plans
IOTC-2014-CoC11-05 Add_1	Collection of fleet development plans
IOTC-2014-CoC11-06	Update on progress regarding the Performance Review (Resolution 09/01).
IOTC-2014-CoC11-07 Rev1	Review of the Provisional IUU Vessels List
IOTC-2014-CoC11-08a Rev1	Complementary elements for discussion under item 8 of the agenda for the Compliance Committee
IOTC-2014-CoC11-08c Rev1	Summary Report on possible infractions
IOTC-2014-CoC11-08c Add_1	Identification of repeated infringements
IOTC-2014-CoC11-09 Rev1	Summary report on Compliance Support Activities
IOTC-2014-CoC11-10	High Seas Boarding and Inspection Scheme
IOTC-2014-CoC11-11	Compliance issues raised by SC16
IOTC-2014-CoC11-12 Rev1	FAD management plans
IOTC-2014-CoC11-CR01-32	32 x Compliance reports for each CPC (Secretariat)
<i>11th Session of the Standing Committee on Administration and Finance</i>	
IOTC-2014-SCAF11-03	Financial Statement: 2013 (IOTC Secretariat)
IOTC-2014-SCAF11-04	Progress report of the Secretariat: 2013 (IOTC Secretariat)
IOTC-2014-SCAF11-05	Program of work and budget for 2014, 2015 and indicative budgets for 2016 (IOTC Secretariat)
IOTC-2014-SCAF11-06	Performance Review Update (Resolution 09/01 – <i>On the performance review follow-up</i>) (IOTC Secretariat)
IOTC-2014-SCAF11-07	Meeting participation fund (MPF) replenishment options (IOTC Secretariat)
IOTC-2014-SCAF11-08	IOTC Secretariat strategic plan (2014–2016) (IOTC Secretariat)
IOTC-2014-SCAF11-09	Contributions outstanding (IOTC Secretariat)
IOTC-2014-SCAF11-10	Membership of Sierra Leone and Guinea in the IOTC (IOTC Secretariat)
<i>18th Session of the Commission</i>	
IOTC-2014-S18-05	Actions arising from the previous Session of the Commission (S17) (IOTC Secretariat)
IOTC-2014-S18-07	Update on progress regarding Resolution 09/01 – <i>on the performance review follow-up</i> (IOTC Secretariat)
IOTC-2014-S18-09	Conservation and management measures requiring action by the Commission in 2014 (Secretariat)
IOTC-2014-S18-10	Review of objections received under Article IX.5 of the IOTC Agreement (IOTC Secretariat)
<i>4th Session of the IOTC Working Party on Neritic Tunas</i>	
IOTC-2014-WPNT04-03	Outcomes of the 16 th Session of the Scientific Committee (IOTC Secretariat)
IOTC-2014-WPNT04-04	Outcomes of the 18 th Session of the Commission (IOTC Secretariat)
IOTC-2014-WPNT04-05	Review of current Conservation and Management Measures relating to neritic tuna species (IOTC Secretariat)
IOTC-2014-WPNT04-06	Progress made on the recommendations of WPNT03 (IOTC Secretariat)
IOTC-2014-WPNT04-07 Rev_1	Review of the statistical data available for the neritic tuna species (IOTC Secretariat)
IOTC-2014-WPNT04-08	Revision of the WPNT Program of Work (2014–2018) (IOTC Secretariat)

Document number	Title
IOTC–2014–WPNT04–24	Maldives kawakawa pole and line fishery catch rate standardization: 2004–2012 (R. Sharma, J. Geehan, M.S. Adam & R. Jauhary)
IOTC–2014–WPNT04–25 Rev_1	Stock assessment of neritic tuna species in Indian Ocean: kawakawa longtail, and narrow-barred Spanish Mackerel tuna using catch-based stock reduction methods (S. Zhou & R. Sharma)
IOTC–2014–WPNT04–26	Indian Ocean Kawakawa Assessment: Examining alternative data poor approaches (R. Sharma & S. Zhou)
<i>5th Session of the IOTC Working Party on Temperate Tunas</i>	
IOTC–2014–WPTmT05–03	Outcomes of the 16 th Session of the Scientific Committee (IOTC Secretariat)
IOTC–2014–WPTmT05–04	Outcomes of the 18 th Session of the Commission (IOTC Secretariat)
IOTC–2014–WPTmT05–05	Review of Conservation and Management Measures relating to temperate tuna (IOTC Secretariat)
IOTC–2014–WPTmT05–06	Progress made on the recommendations of WPTmT04 (IOTC Secretariat)
IOTC–2014–WPTmT05–07	Review of the statistical data and fishery trends for albacore (IOTC Secretariat)
IOTC–2014–WPTmT05–08	Revision of the WPTmT Program of Work (2014–2018) (IOTC Secretariat)
IOTC–2014–WPTmT05–24 Rev_2	Stock assessment of albacore tuna in the Indian Ocean for 2014 using Stock Synthesis (S.D. Hoyle, R. Sharma & M. Herrera)
<i>12th Session of the IOTC Working Party on Billfish</i>	
IOTC–2014–WPB12–03	Outcomes of the 16 th Session of the Scientific Committee (IOTC Secretariat)
IOTC–2014–WPB12–04	Outcomes of the 18 th Session of the Commission (IOTC Secretariat)
IOTC–2014–WPB12–05	Review of Conservation and Management Measures relevant to billfish (IOTC Secretariat)
IOTC–2014–WPB12–06	Progress made on the recommendations of WPB11 (IOTC Secretariat)
IOTC–2014–WPB12–07 Rev_2	Review of the statistical data and fishery trends for billfish (IOTC Secretariat)
IOTC–2014–WPB12–08 Rev_1	Revision of the WPB Program of Work (2015–2019) (Chair & IOTC Secretariat)
IOTC–2014–WPB12–03	Outcomes of the 16 th Session of the Scientific Committee (IOTC Secretariat)
IOTC–2014–WPB12–04	Outcomes of the 18 th Session of the Commission (IOTC Secretariat)
IOTC–2014–WPB12–26 Rev_3	An Age-, Sex- and Spatially-Structured Stock Assessment of the Indian Ocean Swordfish Fishery 1950–2012, using Stock Synthesis (Sharma R & Herrera M)
IOTC–2014–WPB12–27	Stock assessment billfish species in the Indian Ocean: Black Marlin and Sailfish (Sharma R)
<i>10th Session of the Working Party on Ecosystems and Bycatch</i>	
IOTC–2014–WPEB10–03	Outcomes of the 16 th Session of the Scientific Committee (IOTC Secretariat)
IOTC–2014–WPEB10–04	Outcomes of the 18 th Session of the Commission (IOTC Secretariat)
IOTC–2014–WPEB10–05	Review of Conservation and Management Measures relevant to ecosystems and bycatch (IOTC Secretariat)
IOTC–2014–WPEB10–06	Progress made on the recommendations of WPEB09 (IOTC Secretariat)
IOTC–2014–WPEB10–07 Rev_1	Review of the statistical data and fishery trends for bycatch species (IOTC Secretariat)
IOTC–2014–WPEB10–08 Rev_1	Update on the implementation of the IOTC Regional Observer Scheme (IOTC Secretariat)
IOTC–2014–WPEB10–09	Status of development and implementation of National Plans of Action for seabirds and sharks, and implementation of the FAO guidelines to reduce marine turtle mortality in fishing operations (IOTC Secretariat)
IOTC–2014–WPEB10–10	Revision of the WPEB Program of Work (2015–2019) (IOTC Secretariat)
IOTC–2014–WPEB10–11	DRAFT: Indian Ocean shark multi-year research program (IO-ShYP) (IO-SHYP Small Working Group)
IOTC–2014–WPEB10–12	Issues for t-RFMOs in relation to the listing of shark and ray species by the CITES with particular reference to the Indian Ocean Tuna Commission (Clarke S & IOTC Secretariat)
<i>16th Session of the Working Party on Tropical Tunas</i>	
IOTC–2014–WPTT16–03	Outcomes of the 16 th Session of the Scientific Committee (IOTC Secretariat)
IOTC–2014–WPTT16–04	Outcomes of the 18 th Session of the Commission (IOTC Secretariat)
IOTC–2014–WPTT16–05	Review of Conservation and Management Measures relevant to tropical tunas (IOTC Secretariat)

Document number	Title
IOTC–2014–WPTT16–06	Progress made on the recommendations of WPTT15 (IOTC Secretariat)
IOTC–2014–WPTT16–07	Review of the statistical data and fishery trends for tropical tunas (IOTC Secretariat)
IOTC–2014–WPTT16–08	Revision of the WPTT Program of Work (2015–2019) (IOTC Secretariat)
IOTC–2014–WPTT16–42	Maldives skipjack pole and line fishery catch rate standardization 2004–2012: Reconstructing historic CPUE until 1985 (Sharma R, Geehan J & Adam MS)
IOTC–2014–WPTT16–43 Rev_1	Indian Ocean Skipjack Tuna Stock Assessment 1950–2013 (Stock Synthesis) (Sharma R & Herrera M)
<i>10th Working Party on Data Collection and Statistics</i>	
IOTC–2014–WPDCS10–03 Rev1	Outcomes of the 16 th Session of the Scientific Committee and of the 18 th Session of the Commission (IOTC Secretariat)
IOTC–2014–WPDCS10–04	Progress made on the recommendations of WPDCS09 (IOTC Secretariat)
IOTC–2014–WPDCS10–05 Rev1	Review of current Conservation and Management Measures relating to the WPDCS (IOTC Secretariat)
IOTC–2014–WPDCS10–06 Rev1	Report on IOTC Data Collection and Statistics (IOTC Secretariat)
IOTC–2014–WPDCS10–07	Report of the Regional Workshop to Support Compliance with IOTC Requirements for the Collection and Reporting of Fisheries Data to the IOTC (IOTC Secretariat)
IOTC–2014–WPDCS10–08	IOTC Capacity Building Activities in Support of developing coastal IOTC CPCs (IOTC Secretariat)
IOTC–2014–WPDCS10–09 Rev1	WPDCS Draft Priorities WPDCS (IOTC Secretariat)
IOTC–2014–WPDCS10–10	Update on the implementation of the IOTC Regional Observer Scheme (IOTC Secretariat)
<i>5th Working Party on Methods</i>	
IOTC–2014–WPM05–03	Scientific Committee and Commission Outcomes (IOTC Secretariat)
IOTC–2014–WPM05–04	Progress on the recommendations of WPM04 (IOTC Secretariat)
IOTC–2014–WPM05–06	Base operating model for Indian Ocean albacore tuna: scenarios included and conditioning (Mosqueira I & IOTC Secretariat)
IOTC–2014–WPM05–11	A simulation approach to assess reference points and risk to Indian Ocean tuna populations (IOTC Secretariat (IOTC Secretariat)
<i>Other WPM related workshops/meetings: 1st Management Procedure Dialogue</i>	
IOTC–2014–MPD01–R	Report of the IOTC management procedures Dialogue, 31 st May, 2014
<i>17th Session of the Scientific Committee</i>	
IOTC–2014–SC17–03	Outcomes of the 18 th Session of the Commission (IOTC Secretariat)
IOTC–2014–SC17–04	Previous decisions of the Commission (IOTC Secretariat)
IOTC–2014–SC17–05	Report of the Secretariat – Activities in support of the IOTC science process in 2014 (IOTC Secretariat)
IOTC–2014–SC17–06	Revised: Guidelines for the presentation of CPUE standardisations and stock assessment models (IOTC Secretariat)
IOTC–2014–SC17–07	Status of development and implementation of national plans of action for seabirds and sharks, and implementation of the FAO guidelines to reduce marine turtle mortality in fishing operations (IOTC Secretariat)
IOTC–2014–SC17–08	Update on the implementation of the regional observer scheme (IOTC Secretariat)
IOTC–2014–SC17–09	2014: Update on progress regarding Resolution 09/01 – on the performance review follow-up (IOTC Secretariat)
IOTC–2014–SC17–10	Revision of the program of work (2015–19) for the IOTC science process (IOTC Secretariat)
IOTC–2014–SC17–11	Proposed schedule of Working Party and Scientific Committee meetings for 2015 and 2016 (IOTC Secretariat)

APPENDIX IV

PROGRESS MADE ON THE RECOMMENDATIONS OF SCAF11, ENDORSED AT S18

#	Actions from the 11th SCAF (29-31 May 2014)	Responsibility	Progress
1	Improved Cost Recovery Uplift (ICRU) SCAF (para. 34): The SCAF RECOMMENDED that the ICRU related charges, applied by the FAO, be eliminated from the IOTC current and future expenditure accounts, and that the Chair of the Commission communicates this decision to FAO.	IOTC Secretariat	Ongoing: Letter was sent to FAO by the Chair on 18 th July, a response was received from FAO on the 11 October 2014. Chair responded on 6 th November 2014. FAO has not yet responded.
2	Programme of Work and Budget (PWB) SCAF (para. 46): The SCAF RECOMMENDED that the Commission endorse the IOTC Secretariat's programme of work for the financial period 01 January, 2014 to 31 December 2015, as outlined in paper IOTC-2014-SCAF11-05.	Commission	Completed
3	Programme of Work and Budget (PWB) SCAF (para. 47): The SCAF RECOMMENDED that the Commission adopt the budget for, and the scheme of contributions for 2014 and 2015 as outlined in Appendix IV and Appendix V respectively, with the understanding that areas of potential savings continue to be explored.	Commission	Completed
4	Programme of Work and Budget (PWB) SCAF (para. 38): The SCAF RECOMMENDED that the Commission direct the Scientific Committee to provide its work plan on a multi-year basis, with project priorities clearly identified. In doing so, the SC should consider the immediate and longer term needs of the Commission.	Commission	Partially Completed
5	Programme of Work and Budget (PWB) SCAF (para. 41): The SCAF RECOMMENDED that capacity building activities, including workshops on science (stock assessment), compliance with IOTC CMMs, data collection and reporting, and bridging the gap between IOTC science and management advice, be continued in 2014 and financially supported through the IOTC budget and through voluntary contributions from Members and other interested parties.	Commission/Secretariat	Ongoing:

6	Performance Review SCAF (para. 49): The SCAF RECOMMENDED that an analysis of the cost and the benefits of IOTC's existence within and outside of FAO's structure be undertaken to ascertain the viability of IOTC breaking from the UN administrative structure and mandate.	Secretariat/Performance Review	Ongoing. First meeting of the 2 nd Review panel met in Seychelles (2 nd -6 th February 2015) and selected consultant to carry this work.
7	Performance Review SCAF (para. 53): The SCAF RECOMMENDED that the Commission note the current status of implementation for each of the recommendations arising from the Report of the IOTC Performance Review Panel, relevant to the SCAF, as provided in Appendix I.	Commission	Ongoing: Updated for 2014.
8	Meeting participation fund (MPF) SCAF11 (para. 58): The SCAF RECOMMENDED that the MPF is budgeted every year and priorities could be set on the use of available funds. (para. 56): The SCAF RECOMMENDED that the Secretariat seeks voluntary contributions from Members and other interested groups to supplement the MPF.	IOTC Secretariat	Ongoing:
9	Meeting participation fund (MPF) SCAF11 (para. 57): The SCAF RECOMMENDED that the rules of procedure for the administration of the IOTC MPF be modified to exclude funding for Cooperating Non-Contracting Parties, as they currently do not contribute to the IOTC budget.	IOTC Secretariat	Completed
10	Membership of Sierra Leone and Guinea in IOTC SCAF (para. 62): The SCAF RECOMMENDED that the Commission consider paper IOTC–2014–SCAF11–10.	Commission	Pending: The Commission did not agree to a course of action during its last session.
11	Member contributions SCAF (para. 72): The SCAF RECOMMENDED that CPCs that did not reply to the communications sent by the Chair of the Commission, regarding the payment of outstanding contributions shall not benefit from any IOTC related activities in regard to MPF, workshops, training and related support. CPCs in arrears for more than five years and have no interim payment should not benefit from any IOTC	Commission/IOTC Secretariat	Completed: Incorporated in the Rules of Procedure adopted at the 18 th Session.

	related activities, with the exception of I.R. Iran on the basis of the difficulties highlighted in para 69.		
12	<p>Member contributions</p> <p>SCAF11 (para. 73): The SCAF RECOMMENDED that all Members with overdue IOTC contributions finalise payment of those contributions as soon as possible so as not to hinder the operation of the IOTC. To facilitate this process, the Chair of the Commission, with the assistance of the Secretariat and the FAO Legal Department, shall conduct bilateral discussion with each of the CPCs with contributions in arrears totaling more than the previous two years, with a view to recover the outstanding contributions and further assess their interest of continued involvement in the IOTC. Responses from those CPCs should be circulated by the Secretariat to all CPCs for consideration at the 12th Session of the SCAF.</p>	FAO/IOTC Secretariat/Concerned CPCs.	Pending: Discussion held with FAO Legal but no actions foreseen.
13	<p>Member contributions</p> <p>SCAF (para. 71): The SCAF RECOMMENDED that the IOTC Secretariat, in consultation with the Chair of the Commission, to conduct bilateral discussion with the I.R. Iran with a view to find a mutually satisfactory method to recover the outstanding contributions and to detail a plan of action for payment to Membership.</p>	IOTC Secretariat	Pending: IOTC Secretariat wrote to Iran on 7 th August 2014. In response, Iran noted that they could not pay as invoiced by FAO and that this could be addressed through the FAO local office. Iran has only paid the 2003 contributions.
14	<p>Financial Statement</p> <p>SCAF (para. 11): The SCAF RECOMMENDED that the Secretariat request FAO Finance to report remittance advices from IOTC Membership to the Secretariat in real time, without delay and for Membership to label all remittances with an 'IOTC' reference and send a copy to the Secretariat in order to prevent delays in the transfer of funds to the IOTC's account.</p>	IOTC Secretariat/CPCs	Completed.