



# **REGIONAL TRAINING ON THE IOTC E-PSM APPLICATION**

**Hotel Afrin - Maputo, MOZAMBIQUE**

**Date: 23-26 JUNE, 2015**



Day 1 – Session 2

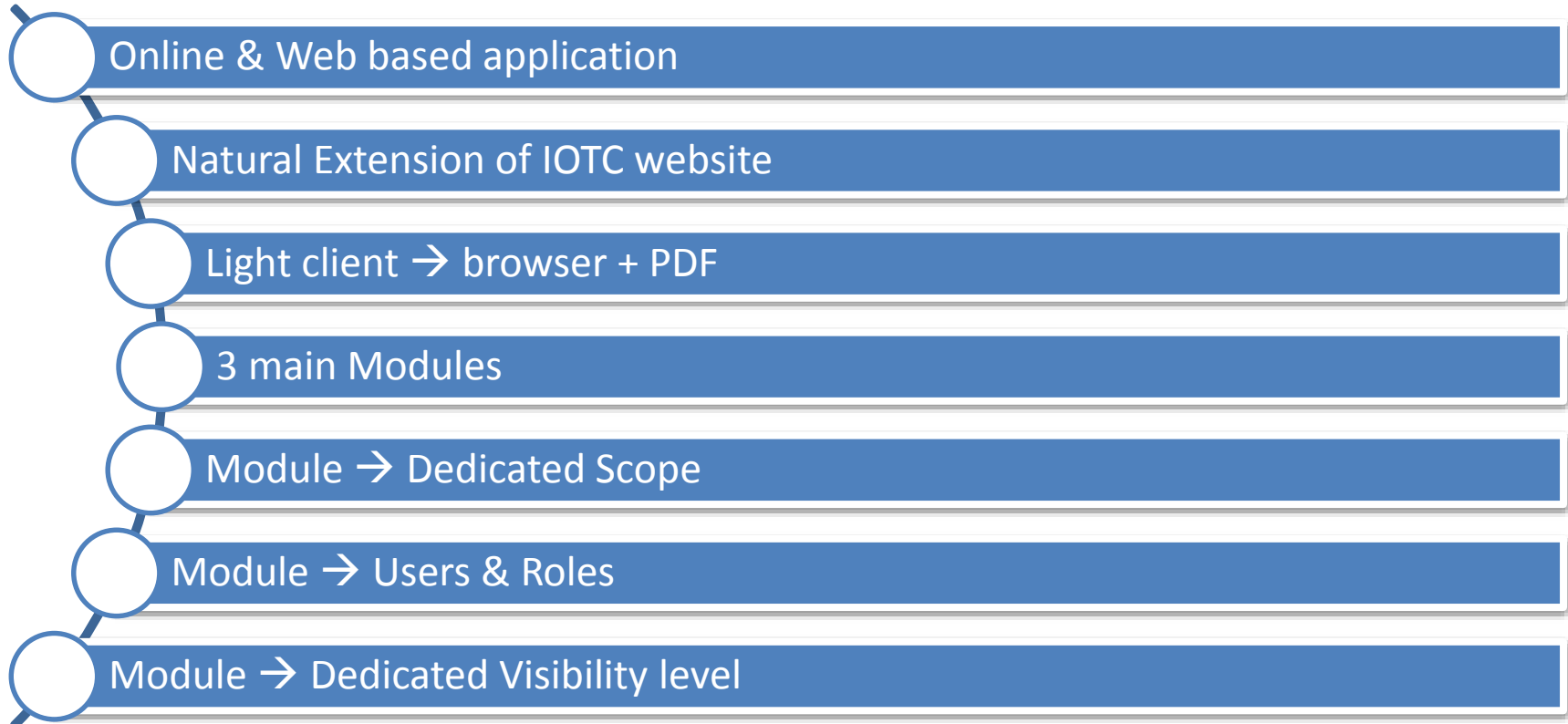
# Discovering the e-PSM Application

**PURPOSE**

**STRUCTURE**

**BENEFITS**

# The E-PSM Application

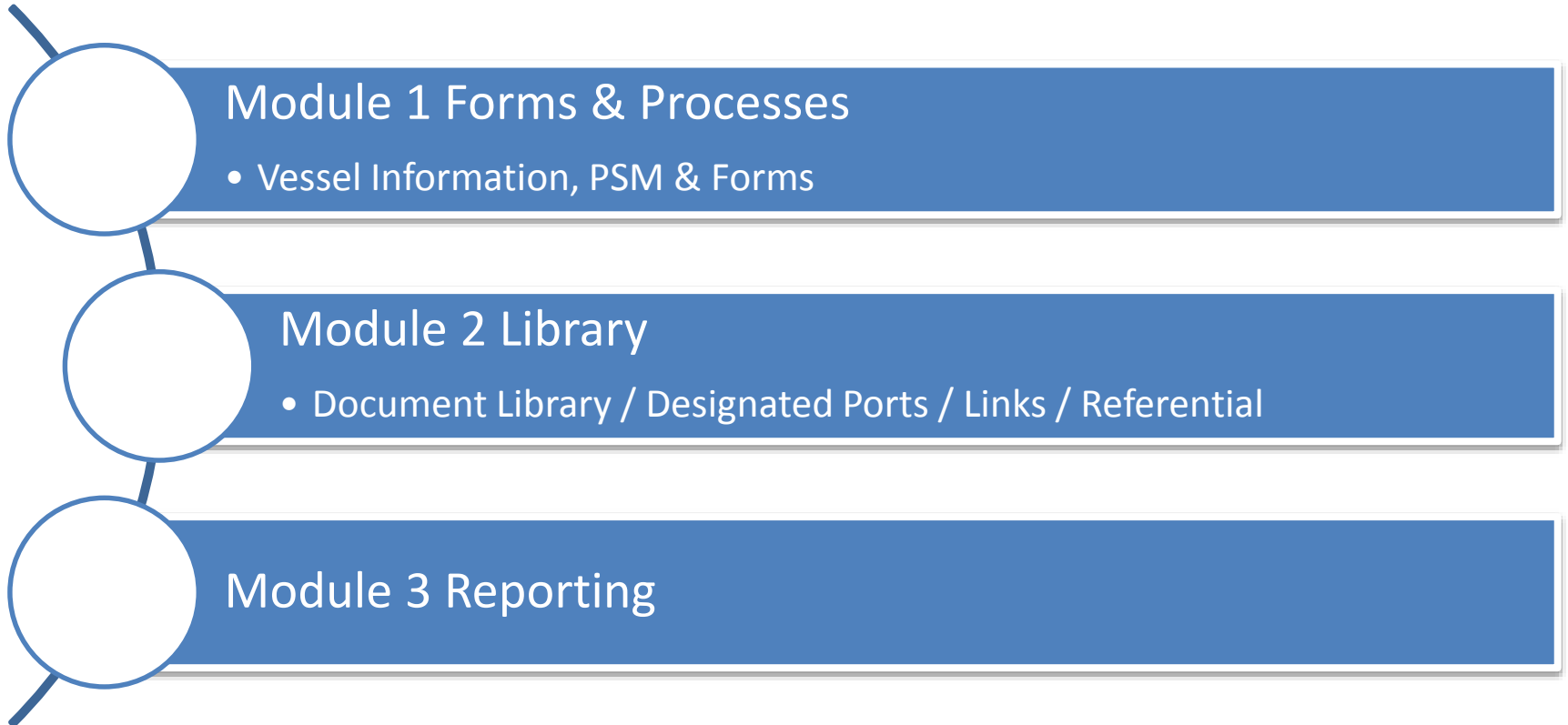


**PURPOSE**

**STRUCTURE**

**BENEFITS**

# Modular Approach



# STRUCTURE

## MODULE 1

- Port Activity Dashboard
- Vessel file Dashboard
- Forms

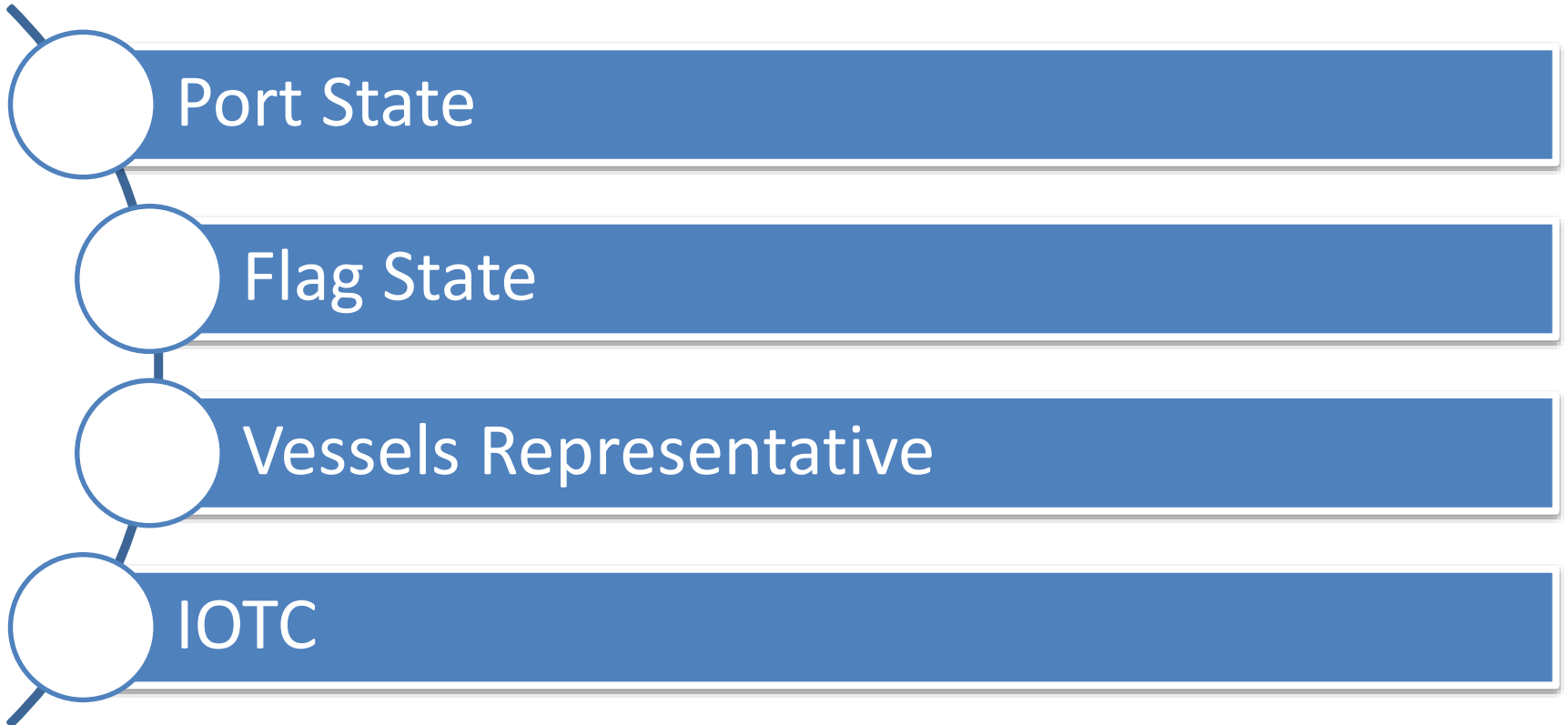
## MODULE 2

- Document Search & Query
- Designated Ports
- Useful Links
- Referential Listing

## MODULE 3

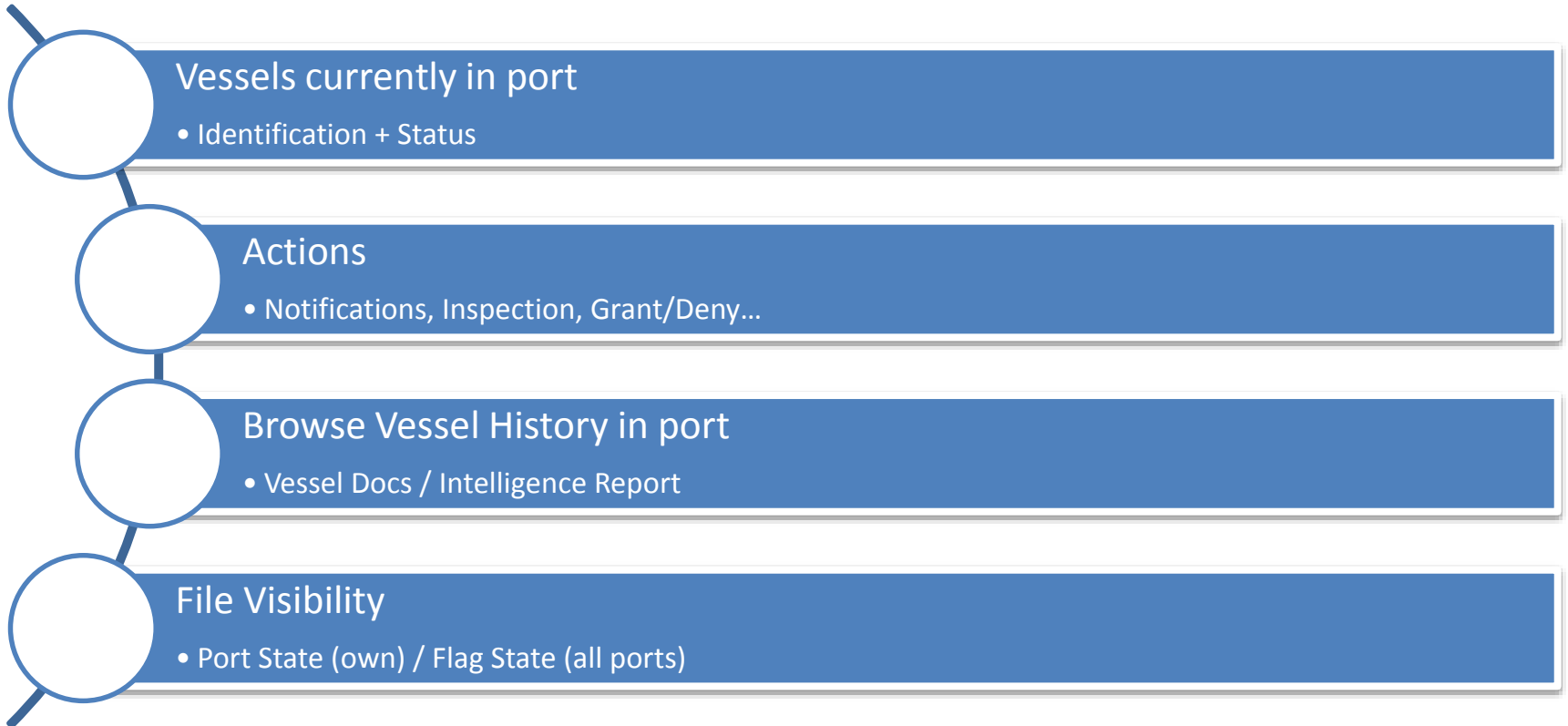
- Consolidated Reporting
- Data Extraction

# User Types





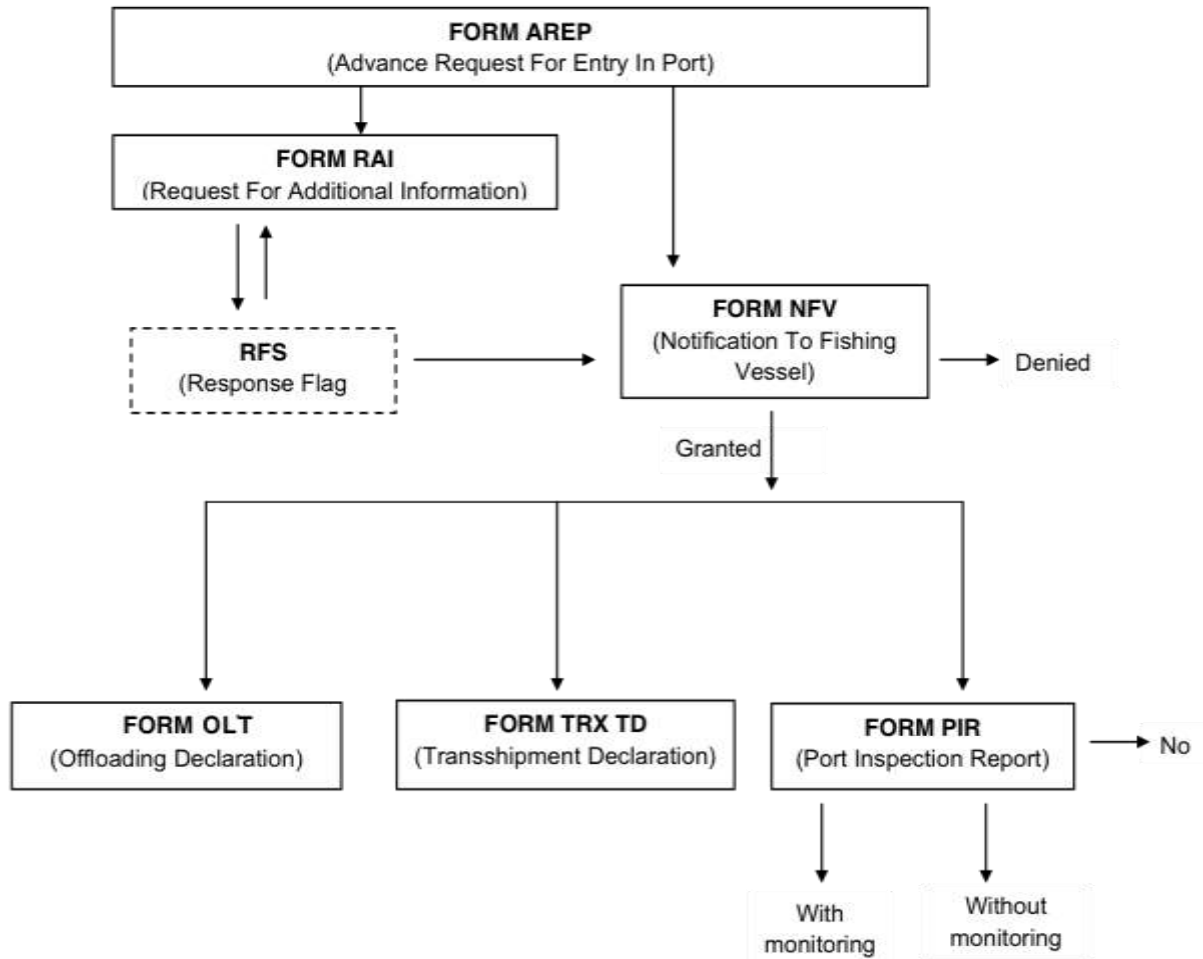
## Port Activity Dashboard



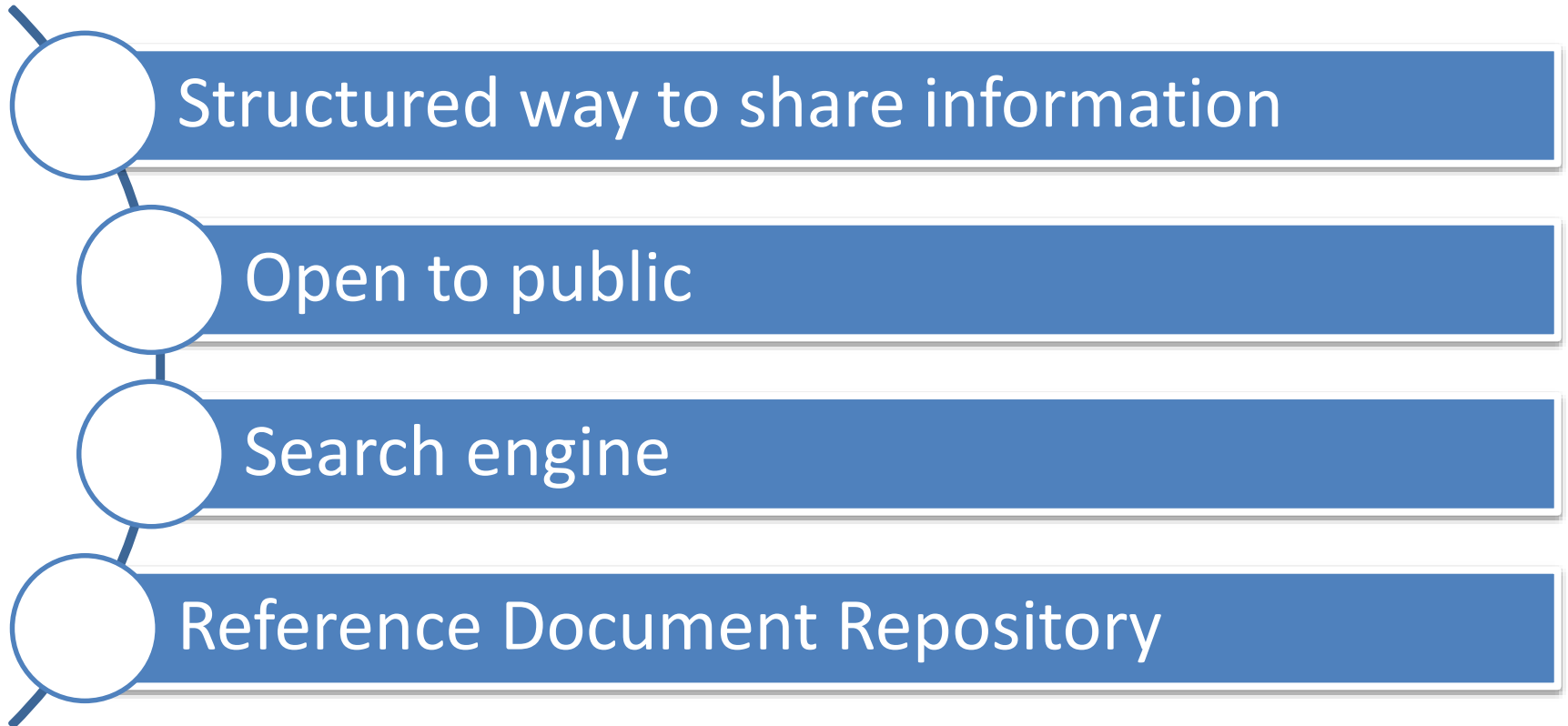
# Vessel Dashboard



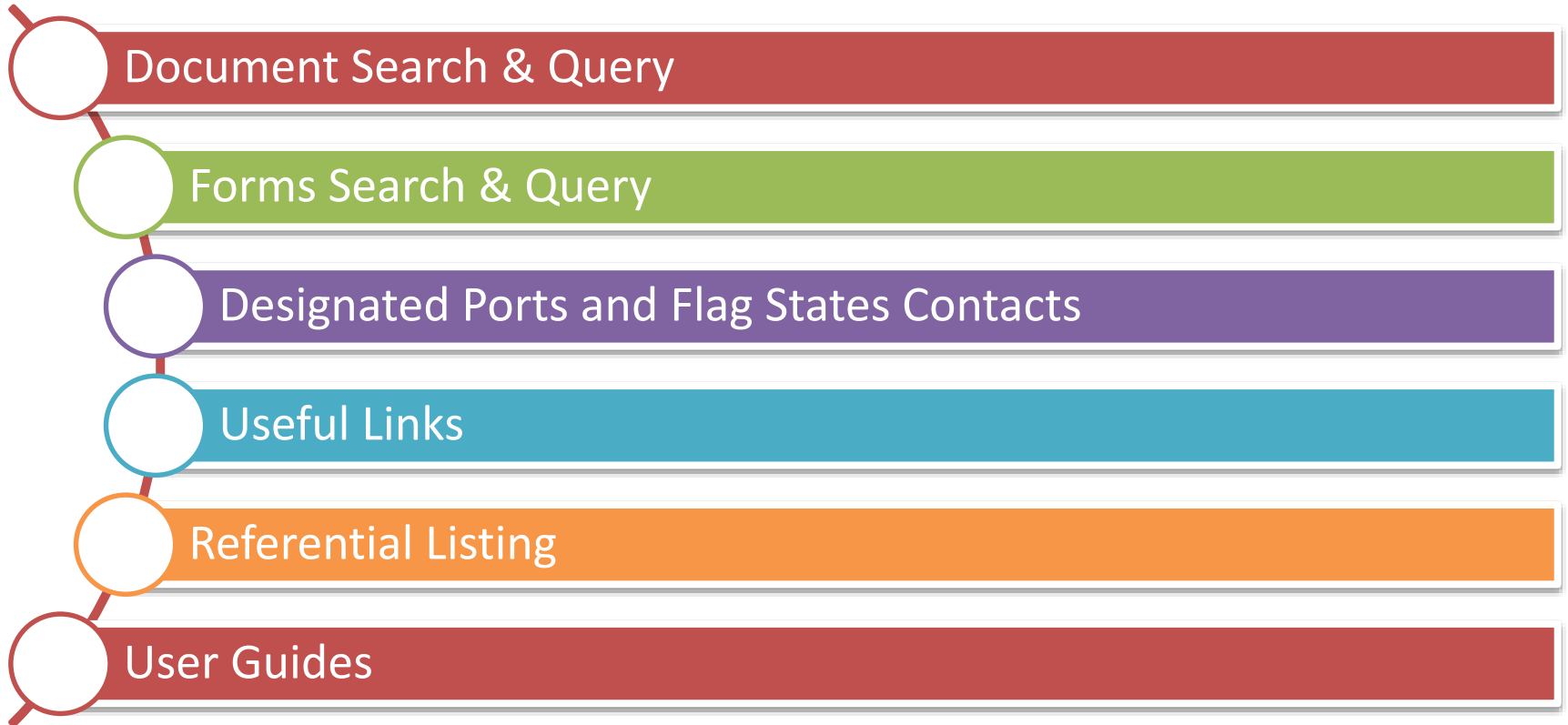
# e-PSM File - Forms



# Goal: Library



# Features Overview

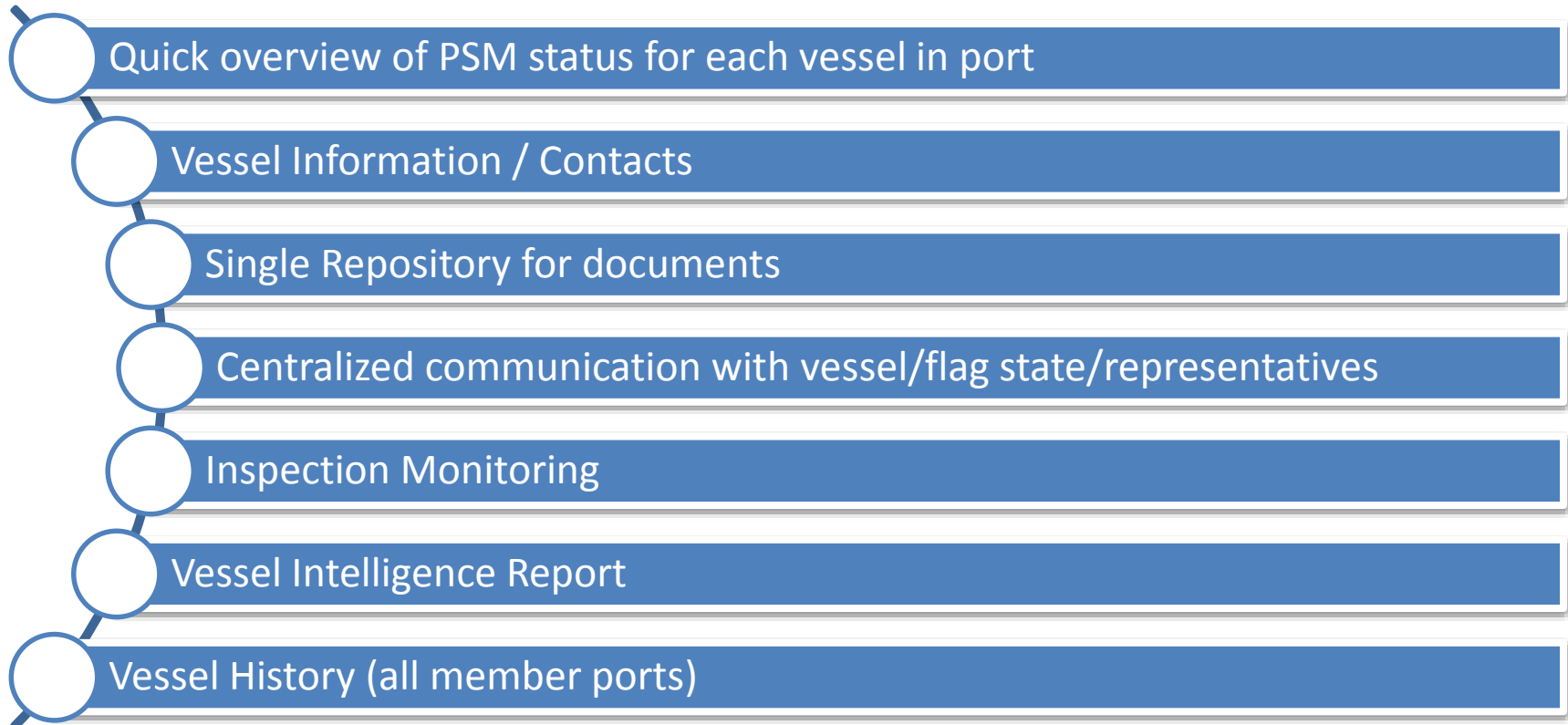


PURPOSE

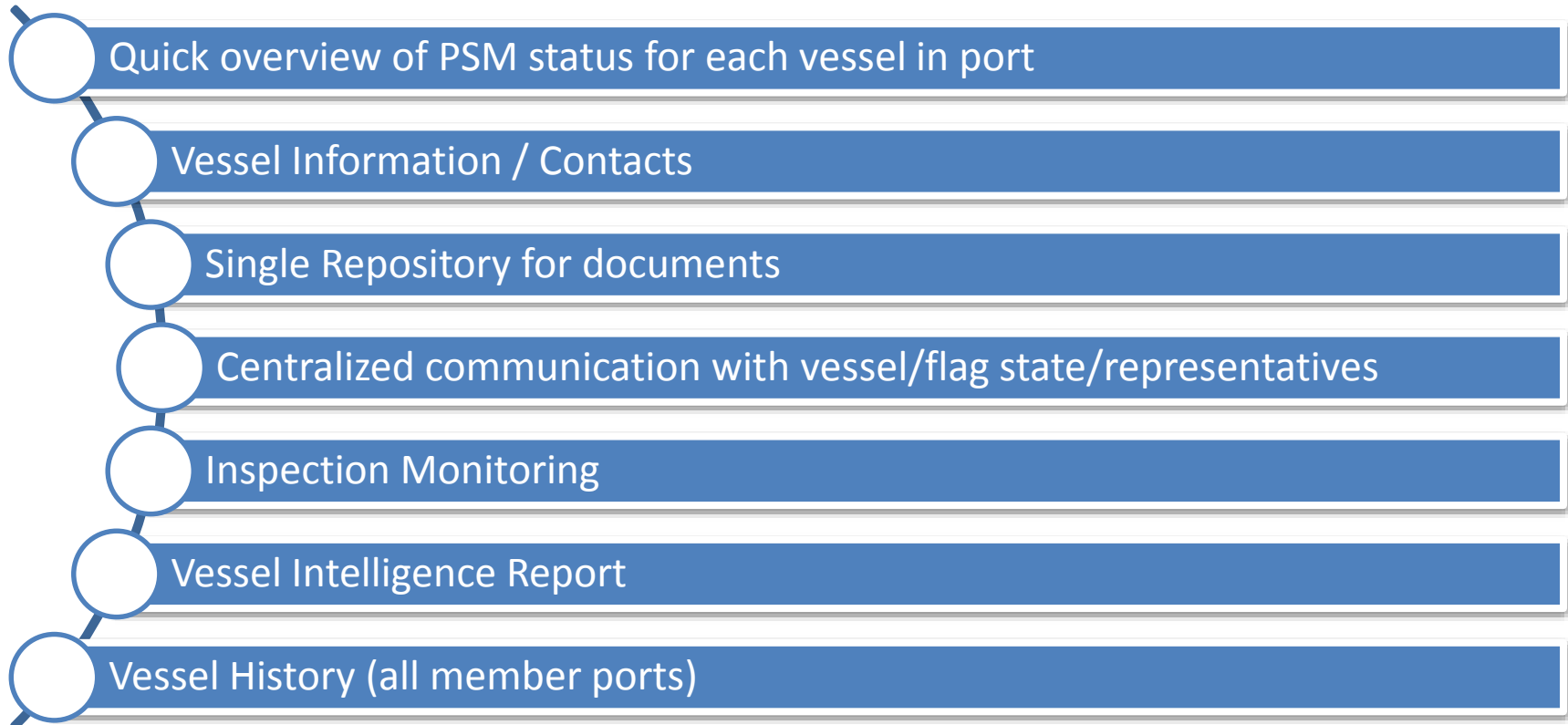
STRUCTURE

BENEFITS

# Port State


- 
- Quick overview of PSM status for each vessel in port
  - Vessel Information / Contacts
  - Single Repository for documents
  - Centralized communication with vessel/flag state/representatives
  - Inspection Monitoring
  - Vessel Intelligence Report
  - Vessel History (all member ports)

# Port State

- 
- Quick overview of PSM status for each vessel in port
  - Vessel Information / Contacts
  - Single Repository for documents
  - Centralized communication with vessel/flag state/representatives
  - Inspection Monitoring
  - Vessel Intelligence Report
  - Vessel History (all member ports)



# Vessels

- 
- Faster submission of AREP / Documents  
(thanks to contact db, history, vessel db...)
  - Centralized communication to provide additional requested information
  - Easy (token based) authentication
  - Easy delegation to vessel representative

# Any Question?

