



RESOLUTION 15/02

MANDATORY STATISTICAL REQUIREMENTS FOR IOTC MEMBERS AND COOPERATING NON-CONTRACTING PARTIES (CPCs)

APPLICABLE TO



CPC FLAG STATE



CPC COASTAL STATE



CPC PORT STATE



CPC MARKET STATE

This Resolution requires CPC flag States to provide information on total catch data, catch and effort data and size data to the IOTC Secretariat according to specified timelines. This information is essential for determining the status of the resources. The requirements apply to the flag State.

REPORTING REQUIREMENTS

The reporting requirements are split into different fleet types and data types. Details on the exact data to supply under other IOTC Resolutions are specified in paragraphs 2 to 6 and paragraph 7 specifies the timeliness of data submission.

WHO

CPC FLAG STATE

CATCH, CATCH & EFFORT, SIZE

NOMINAL CATCH

CATCH & EFFORT

SIZE

SUPPLY VESSELS,
DAYS AT SEA & FADS

WHAT

Estimates of total annual catch by species and by gear

Surface fisheries: provided by 1° grid area & month strata

Longline fisheries: provided by 5° grid area & month strata

Coastal fisheries: provided frequently by catch species, gear and effort

For all gears and species under "catch & effort", following *Guidelines for reporting Fisheries Statistics to the IOTC*

Submission must contain:

- a) Supply vessel data
- b) No. of days at sea by 1° grid area and month
- c) Total no. and type of FADs

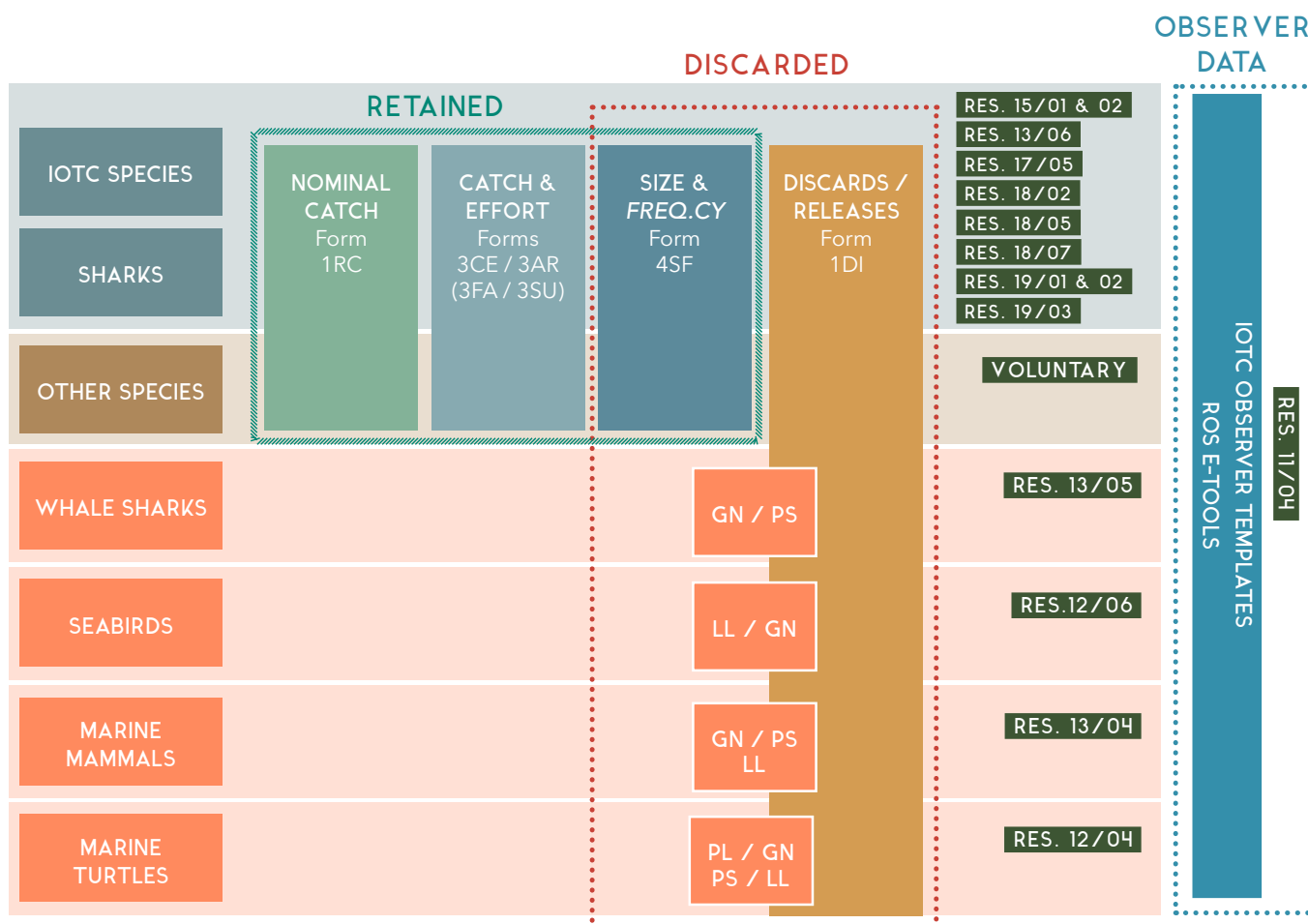
WHEN

DEADLINE

All fleets, except longline fleets, to submit annual data by 30 June, annually. Longline fleets to submit provisional data by 30 June and confirm data by 30 December annually

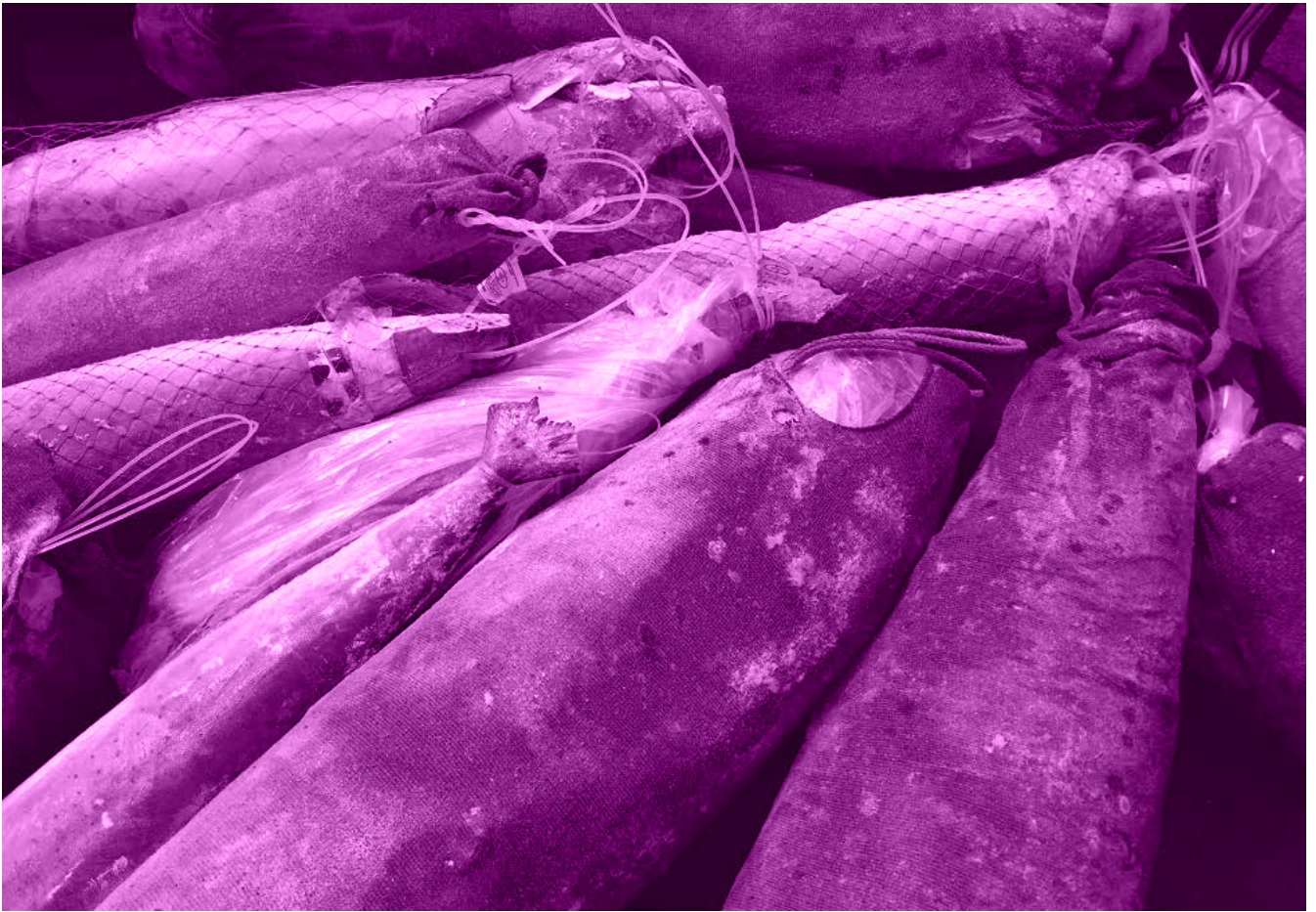
REPORTING REQUIREMENTS: FORMAT AND CONTENT

A series of detailed template reporting forms has been developed by the Secretariat in Excel format. These forms cover all of the different data reporting requirements under this Resolution, and also cover data reporting requirements under Resolutions 17/05 (Conservation of Sharks), 15/01 (fishing logbook), 12/06 (Bycatch of Seabirds), 12/04 (Conservation of Marine Turtles), 13/04 (Cetaceans), 13/05 (Whale sharks), 15/05 (Marlins) and under the IOTC Agreement (socio-economic data). A total of 11 template forms covers these reporting requirements, including those under this Resolution.



Current IOTC statistical data reporting requirements by species and data set, including references to the recommended IOTC forms for data submission and categorised by the fate of the captured species (retained vs. discarded / released).





REPORTING REQUIREMENT 1:

FLAG STATE TO SUBMIT FINAL DATA SETS FOR SURFACE FLEETS AND COASTAL FISHERIES ON TOTAL CATCH, EFFORT AND SIZE FOR THE PREVIOUS YEAR (PARA 1)

IMPLEMENTATION

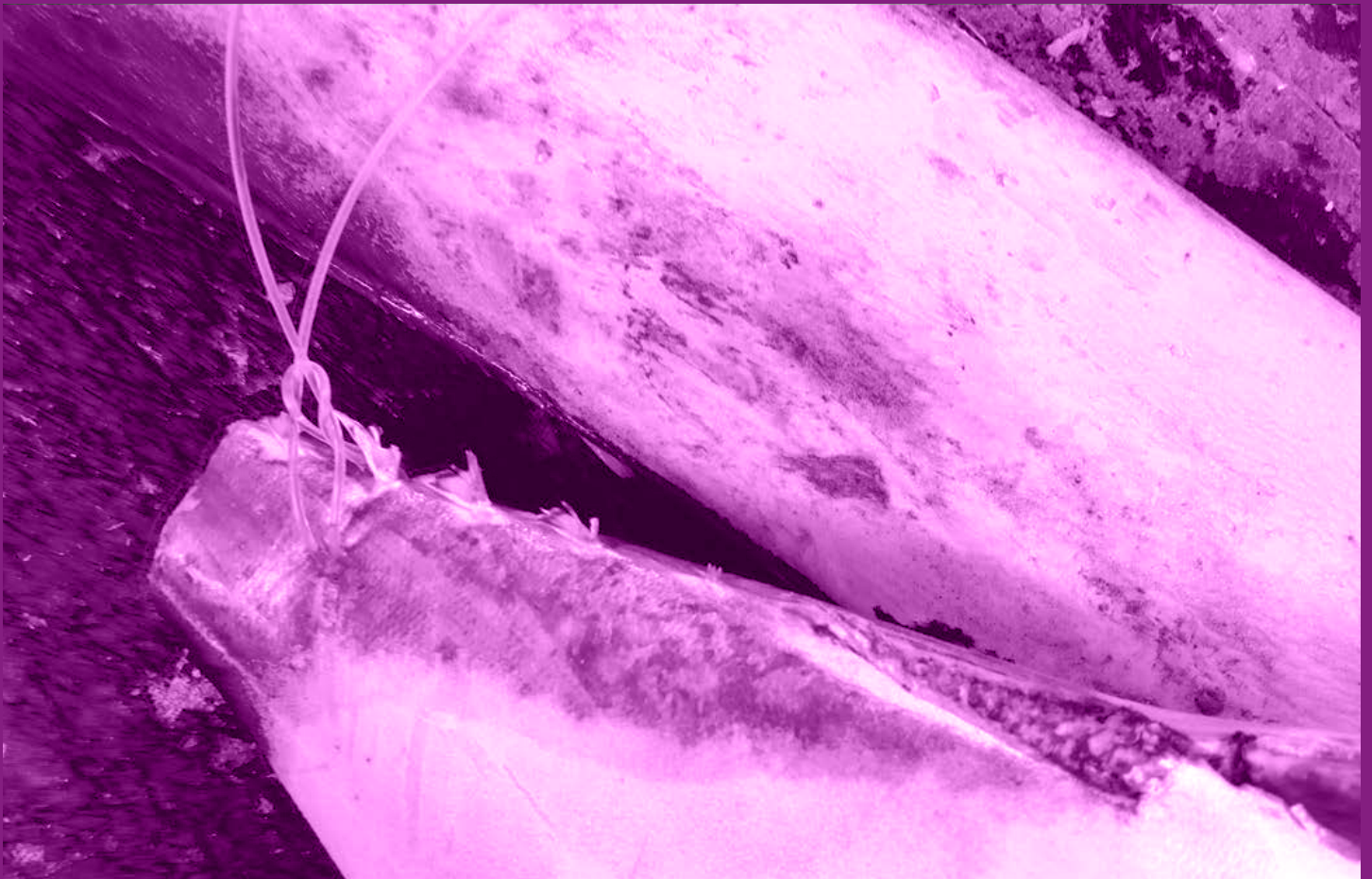
- How to report: For all reporting, the relevant Guidelines for reporting Fisheries Statistics to the IOTC: <https://www.iotc.org/sites/default/files/documents/data/Guidelines%20Data%20Reporting%20IOTC.pdf> and other data recording and submission guidelines provided in the respective template forms must be followed meticulously.
- Reporting format: Data must be submitted in specified file format. The template spread-sheet forms can be accessed at <http://www.iotc.org/data/requested-statistics-and-submission-forms> (Forms 1RC, 3CE, 3AR, 4SF, 1DI)
- Where to send the information: The reports should be sent to iotc-secretariat@fao.org

REPORTING REQUIREMENT 2:

AS PART OF THE PURSE SEINE FISHING EFFORT, REPORT A) SUPPLY VESSEL DATA
B) NUMBER OF DAYS AT SEA (PURSE SEINE AND SUPPLY VESSELS) BY 1° GRID AREA AND MONTH
C) TOTAL NO. AND TYPE OF FADS SET PER QUARTER AND OTHER DETAILS. (PARA 6)

IMPLEMENTATION

- How to report: For every single data type (nominal, catch & effort, size, etc.) and gear combination, required to be submitted under the resolution, the specific data recording and submission guidelines, as provided within the respective template forms, ought to be followed meticulously.
- Reporting format: Data must be submitted in specified file format. The template spread-sheet forms can be accessed at <http://www.iotc.org/data/requested-statistics-and-submission-forms> (Forms 3SU, 3FA)
- Where to send the information: The data reports should be sent to iotc-secretariat@fao.org



COOPERATION REQUIREMENTS

None in this Resolution.

OBLIGATIONS OF THE INDUSTRY

Longline fleets operating in the high seas shall provide the flag CPC with provisional data for the previous year no later than 30 June and final data by 30 December and all other fleets (including supply vessels)

OBLIGATIONS OF THE SECRETARIAT

None in this Resolution.

OBLIGATIONS OF THE COMMISSION & BODIES

None in this Resolution.



Indian Ocean Tuna Commission
P.O. Box 1011, Seychelles
Tel: +248-4225494
www.iotc.org