



# FISHERIES INDICATORS FOR INDIAN OCEAN TROPICAL TUNA

*24<sup>TH</sup> IOTC WORKING PARTY ON TROPICAL TUNAS, 24-29 OCTOBER 2022*

*IOTC SECRETARIAT*

# PURPOSE

To provide participants at the 24<sup>th</sup> Session of the IOTC Working Party on Tropical Tunas (WPTT24) with an overview of fisheries indicators for the three tropical species based on the data available to the IOTC Secretariat as of October 2022.



Food and Agriculture  
Organization of the  
United Nations

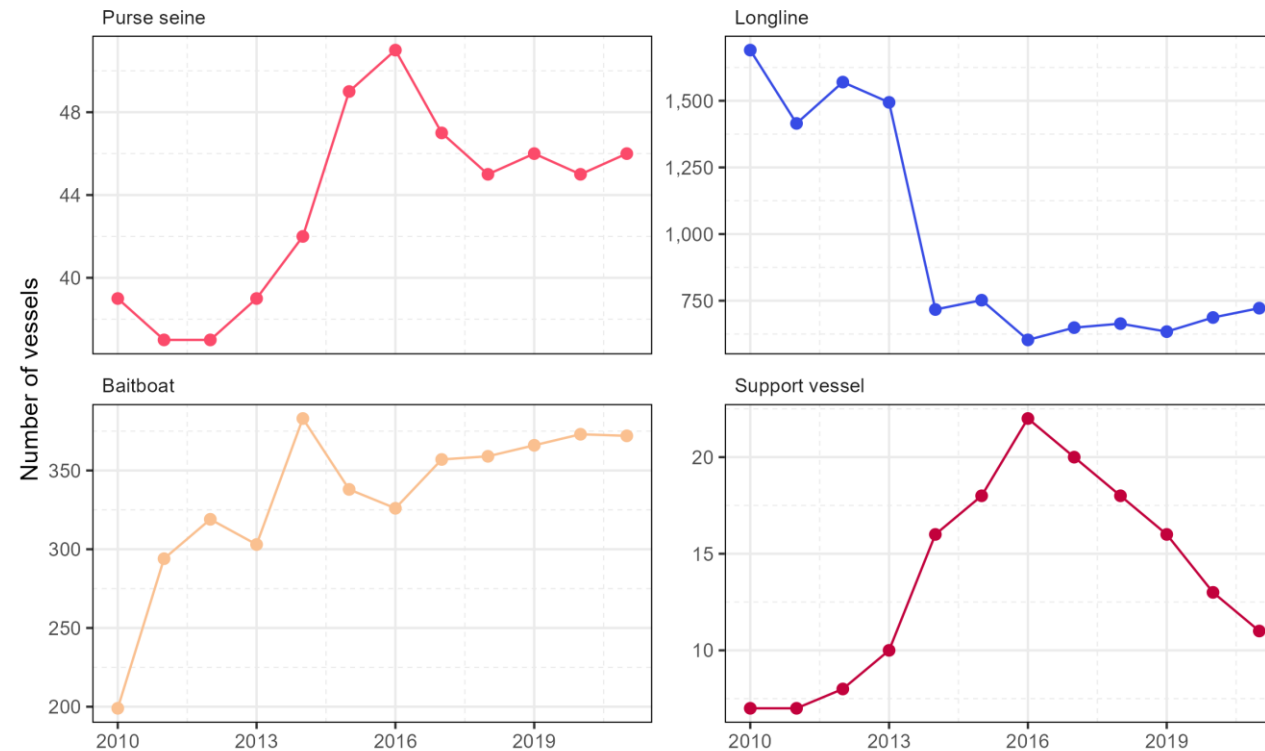
IOTC-2022-WPTT24-04



Indian Ocean Tuna Commission  
Commission des Thons de l'Océan Indien

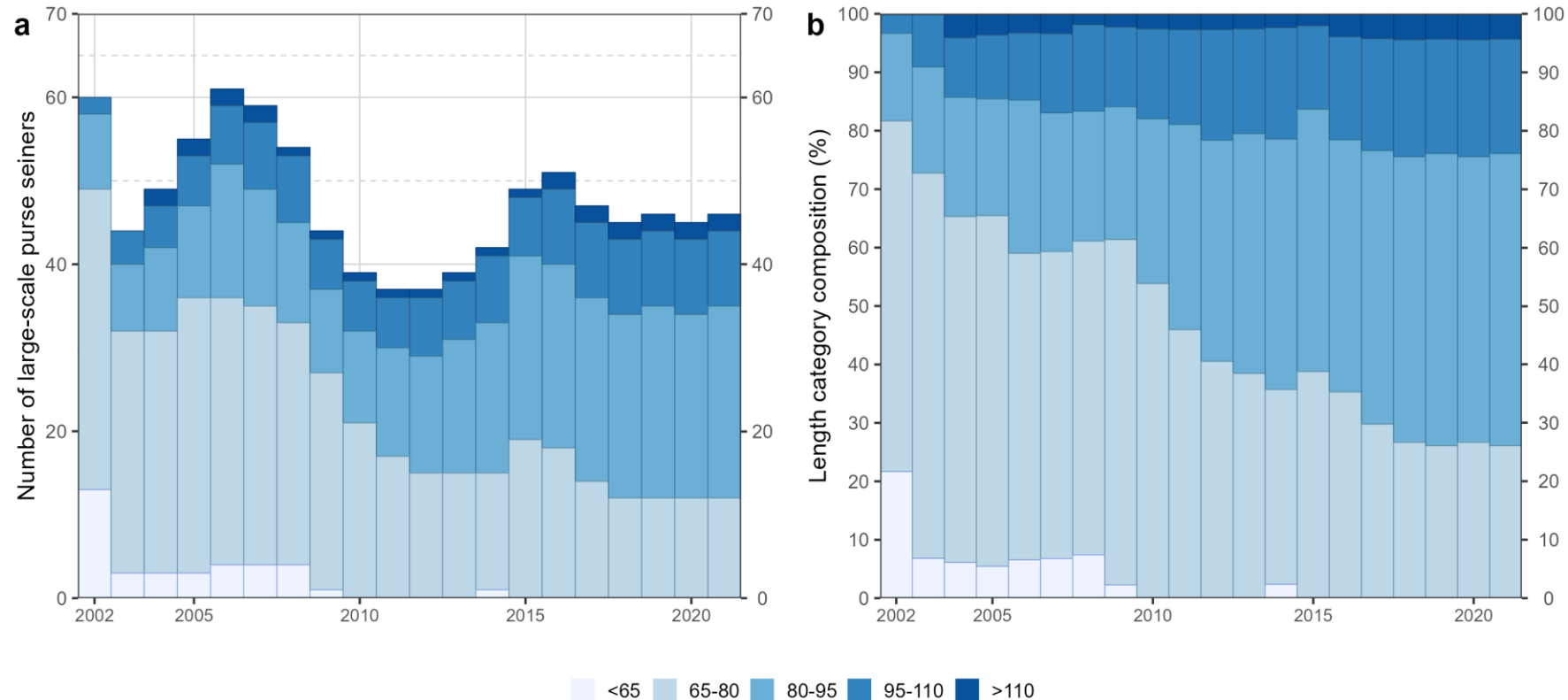
# FISHING CAPACITY

# FISHERY VESSELS



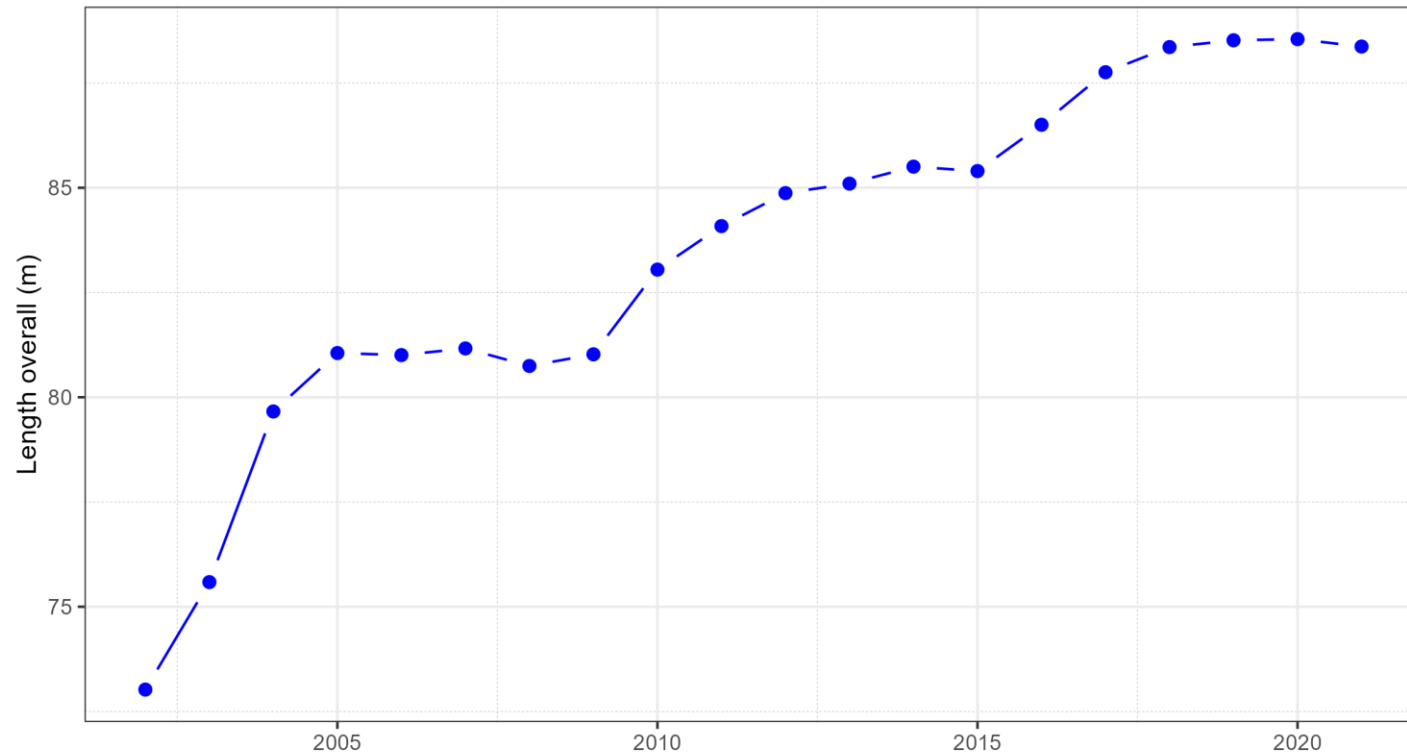
Annual estimated number of active vessels larger than 24 m length overall by fishery group, 2010-2021. Gillnetters not included in absence of consistent information reported to the Secretariat. Source: [IOTC AVL](#)

# LARGE-SCALE PURSE SEINE FLEET



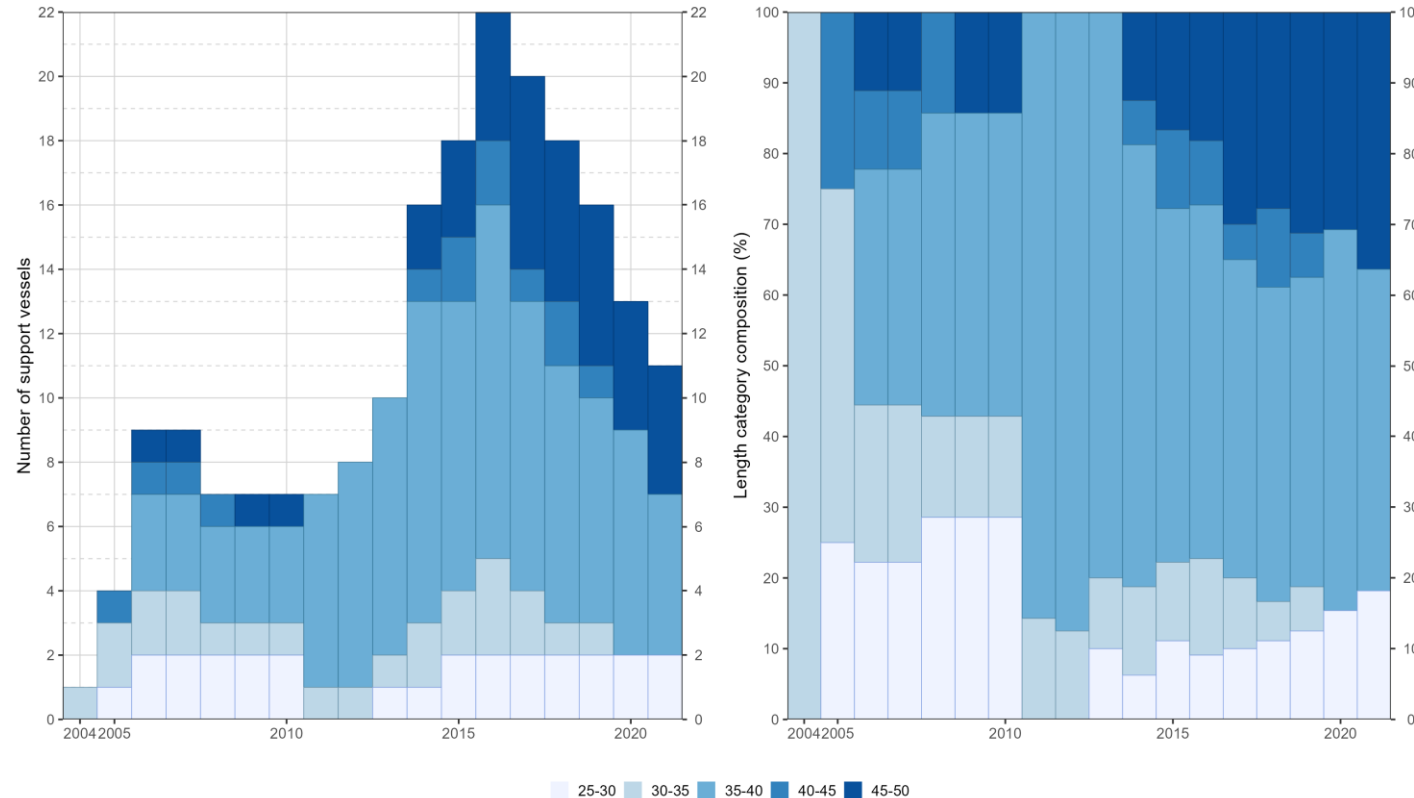
Annual changes in number and size composition (length overall; m) of the large-scale purse seiners, 2002-2021

# LARGE-SCALE PURSE SEINE FLEET



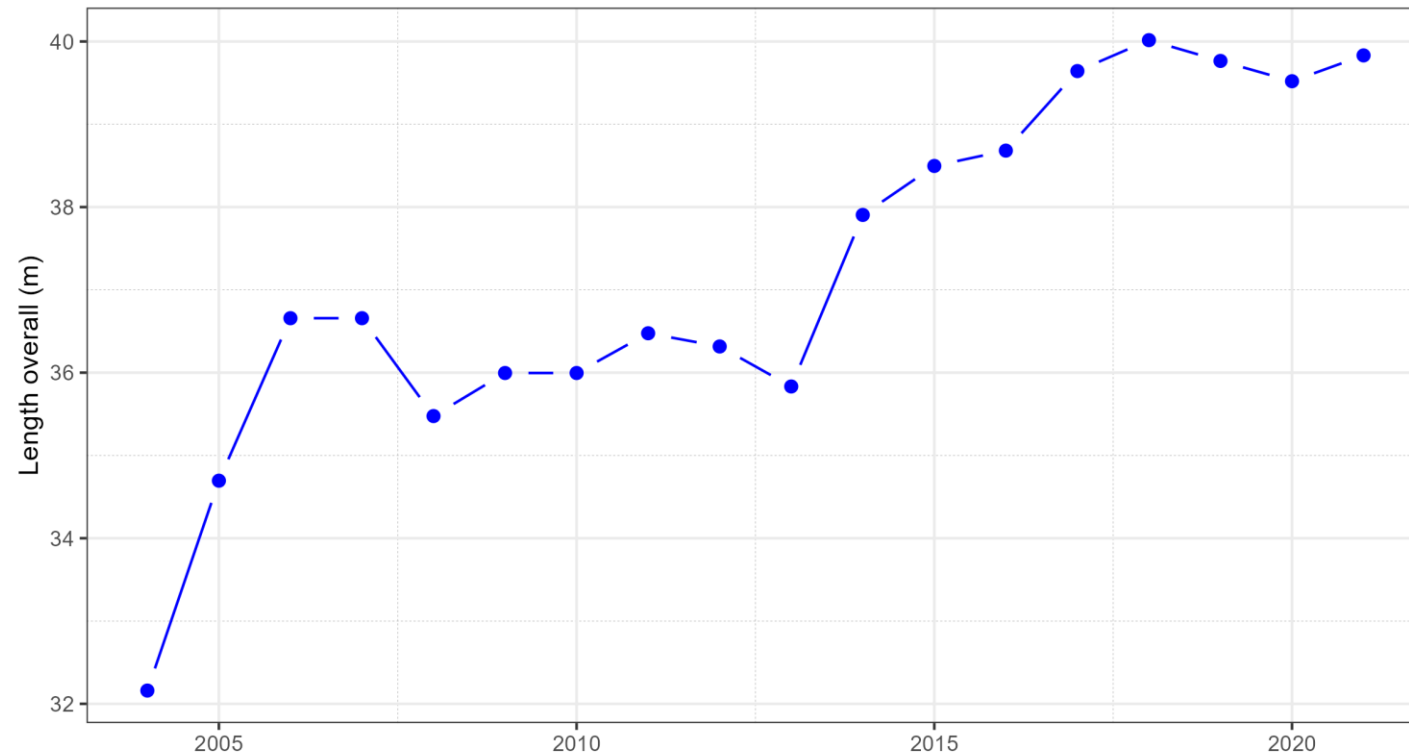
Annual changes in mean size (length overall; m) of the large-scale purse seiners, 2002-2021

# SUPPORT VESSELS FLEET



Annual changes in number and size composition (length overall; m) of the PS support vessels, 2004-2021

# SUPPORT VESSELS FLEET



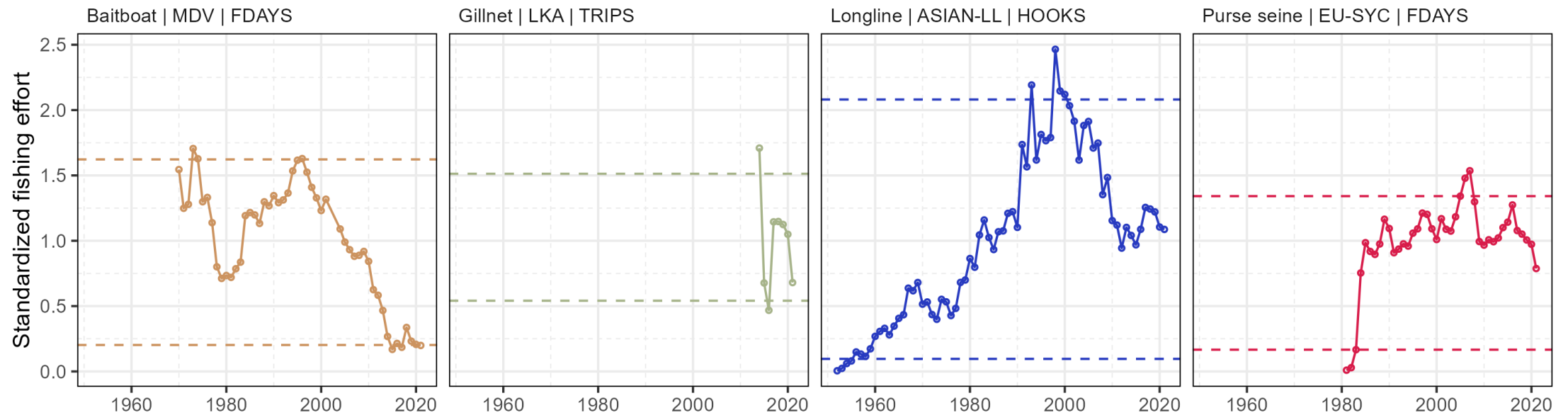
Annual changes in mean size (length overall; m) of the PS support vessels, 2004-2021





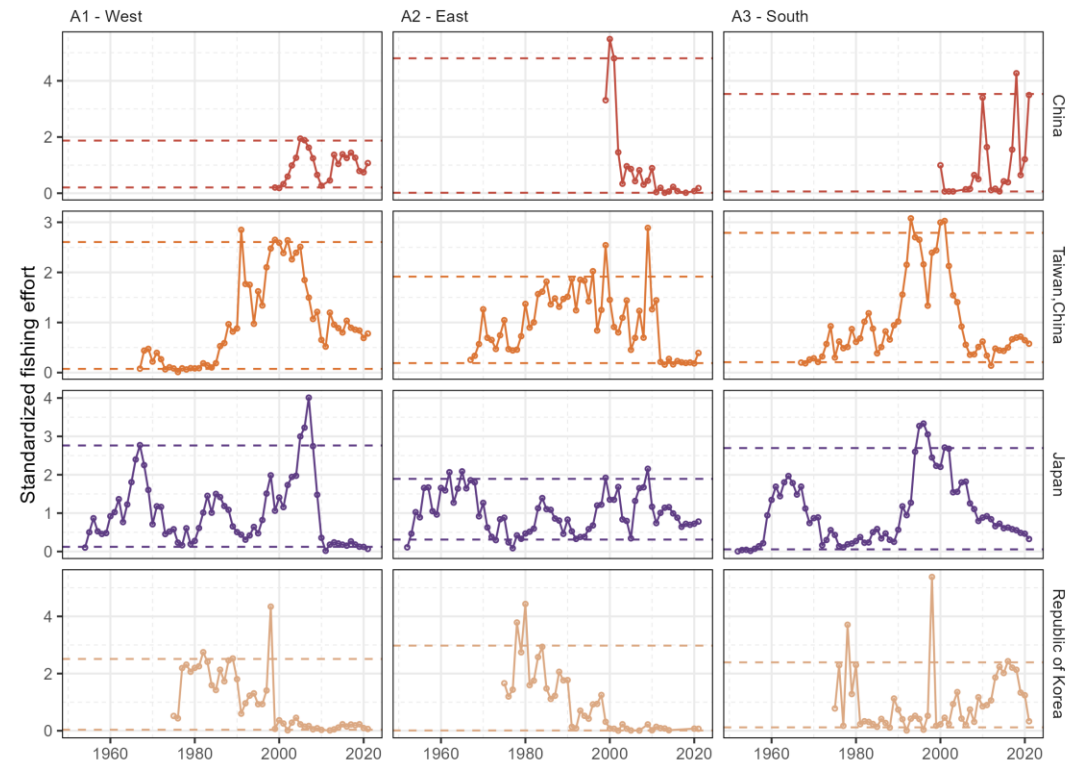
# FISHING EFFORT

# TRENDS IN NOMINAL EFFORT



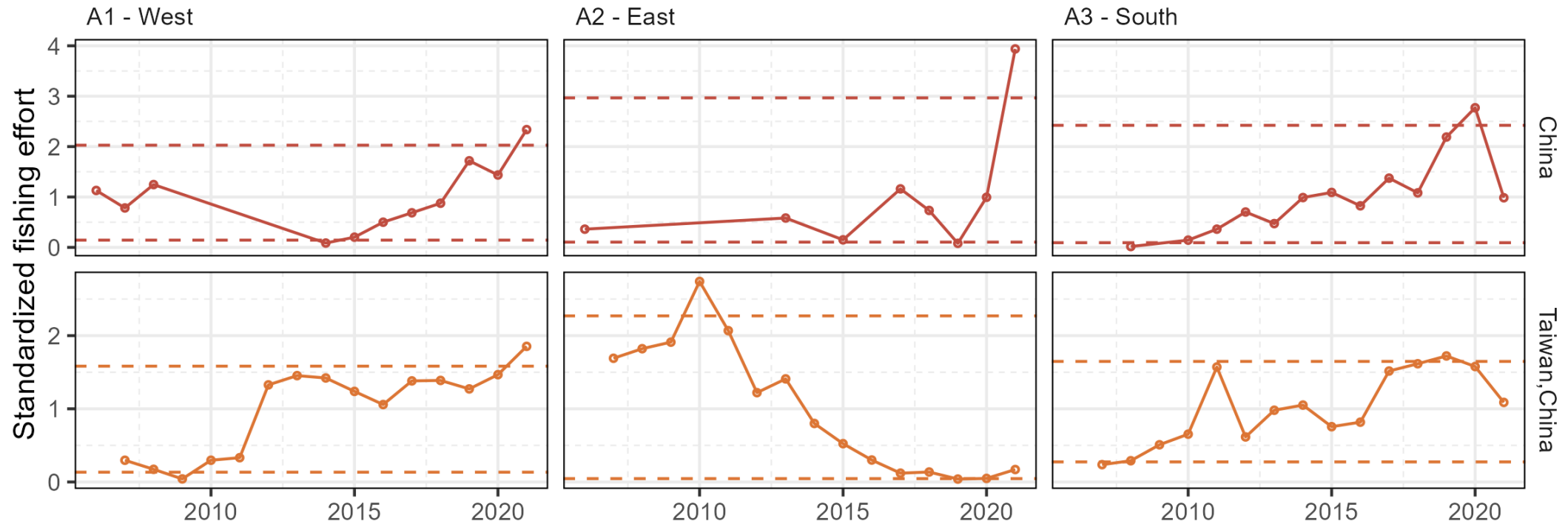
Annual changes in estimated nominal effort (standardised to the mean) for some fisheries, 1952-2021. MDV = Maldives; LKA = Sri Lanka; ASIAN-LL = China, Korea, and Taiwan,China; EU-SYC = Spain, France and Seychelles

# EFFORT: DEEP-FREEZING LONGLINE FISHERIES



Annual changes in LLD nominal effort (standardised to the mean) by main BET area, 1952-2021

# EFFORT: FRESH LONGLINE FISHERIES



Annual changes in LLF nominal effort (standardised to the mean) by main BET area, 2006-2021



Food and Agriculture  
Organization of the  
United Nations

IOTC-2022-WPTT24-04

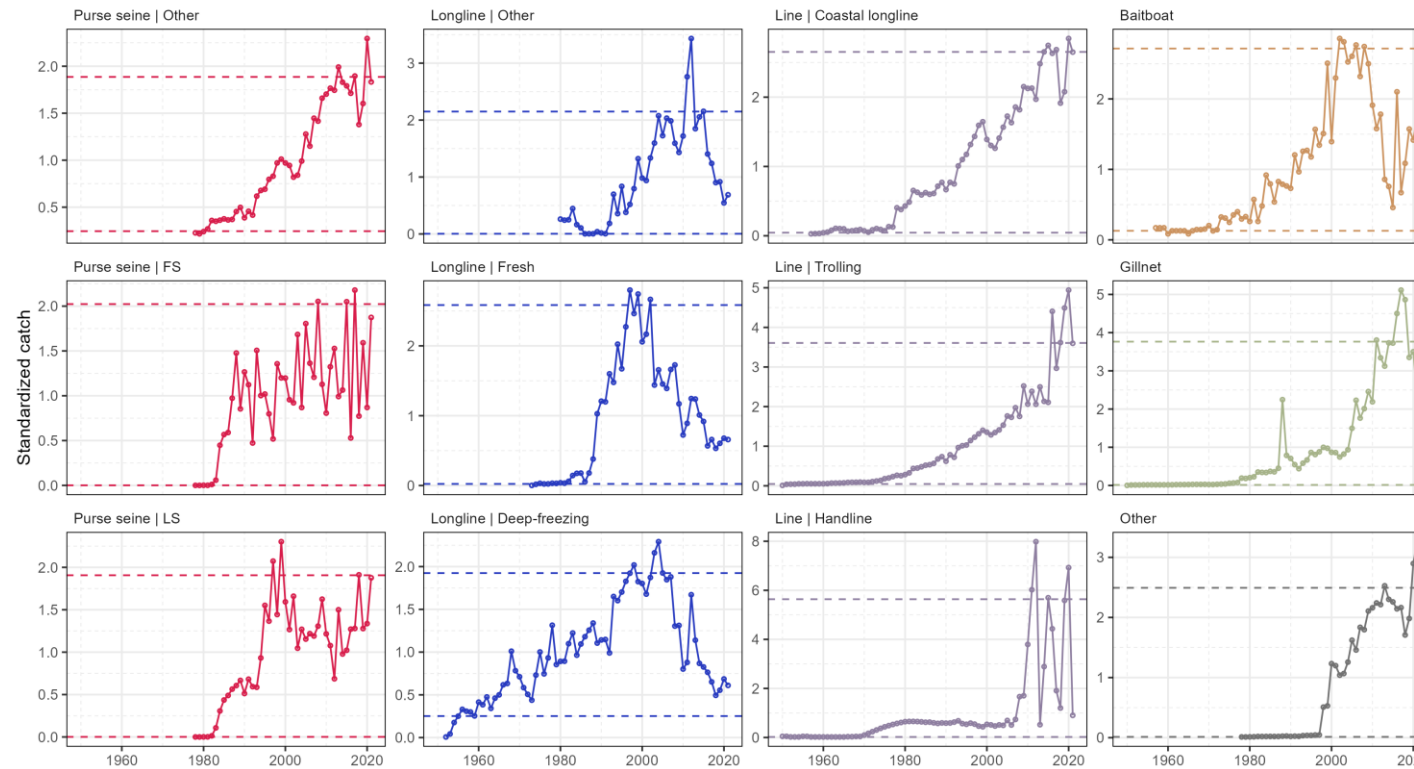


Indian Ocean Tuna Commission  
Commission des Thons de l'Océan Indien

# BIGEYE TUNA

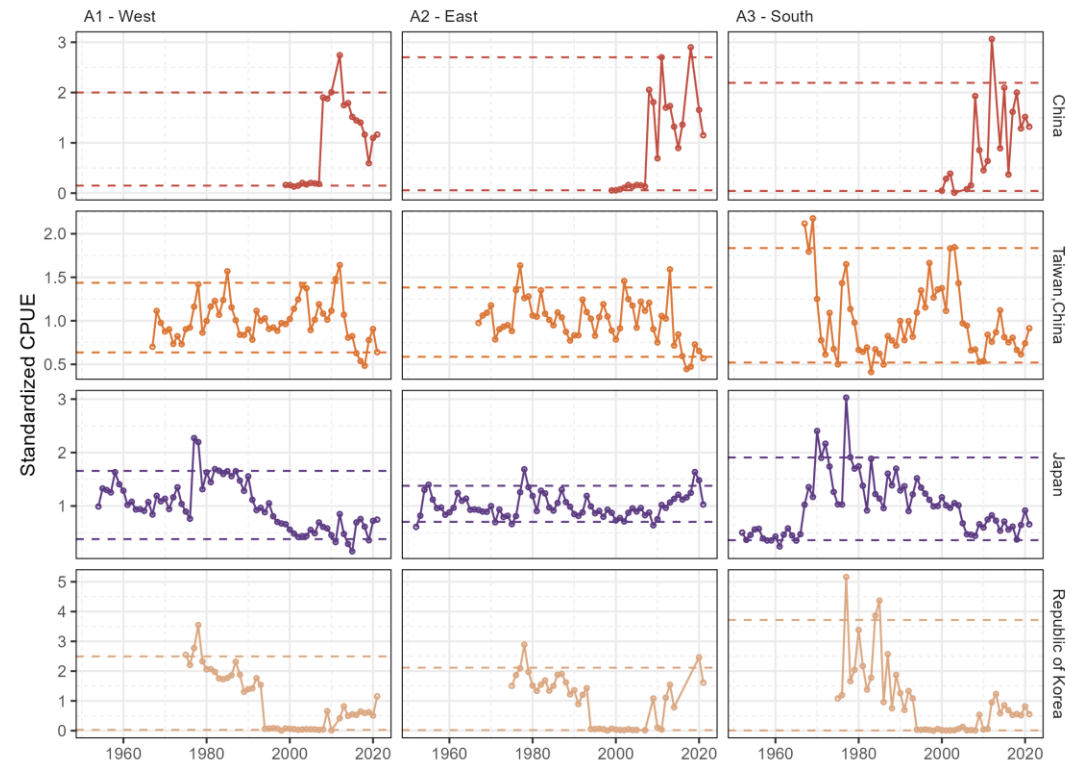
---

# TRENDS IN NOMINAL CATCH



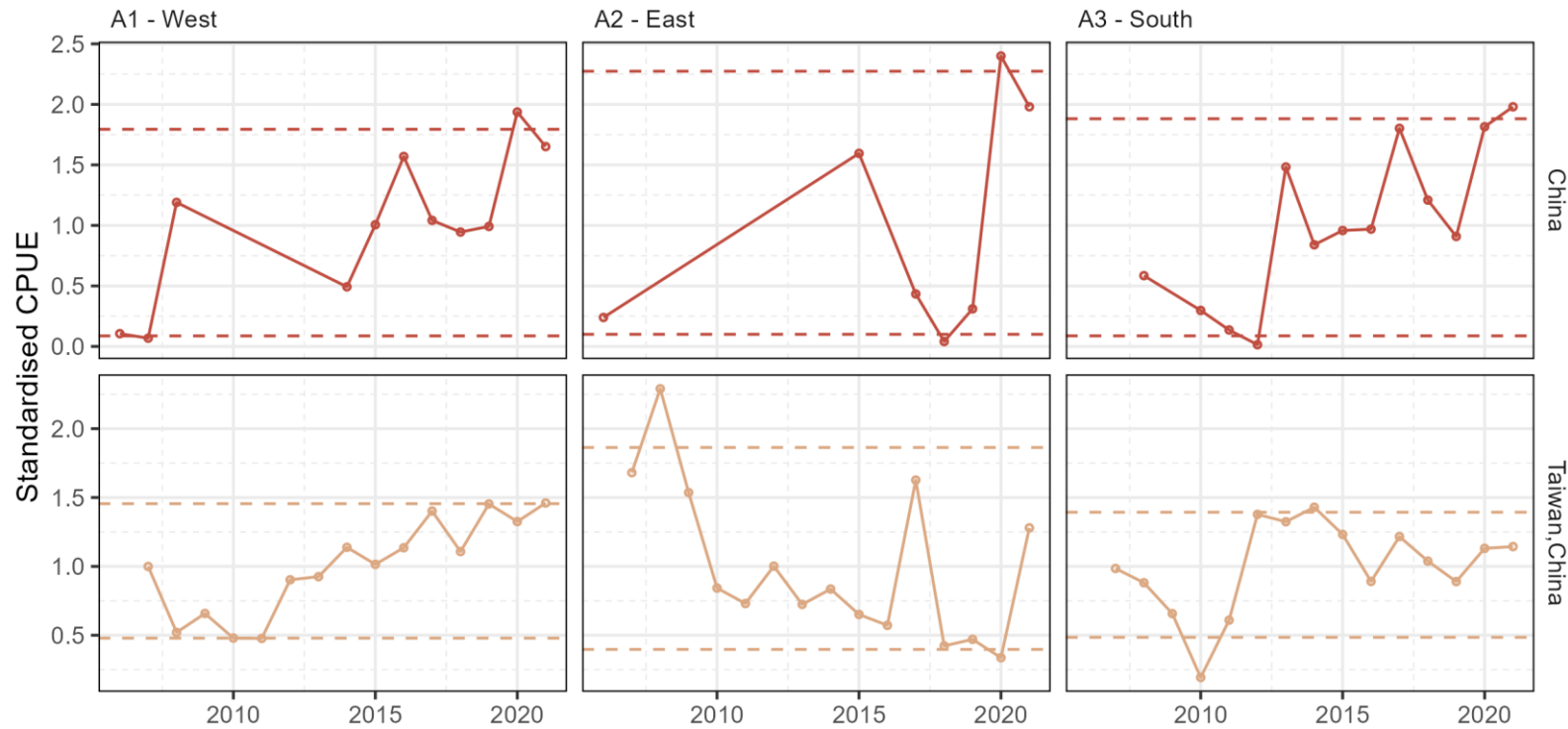
Annual nominal catches (standardised to the mean) by fishery, 1952-2021

# TRENDS IN CPUE: DEEP-FREEZING LONGLINE



Annual nominal CPUE (standardised to the mean) of BET in LLD fisheries by main fleet and area

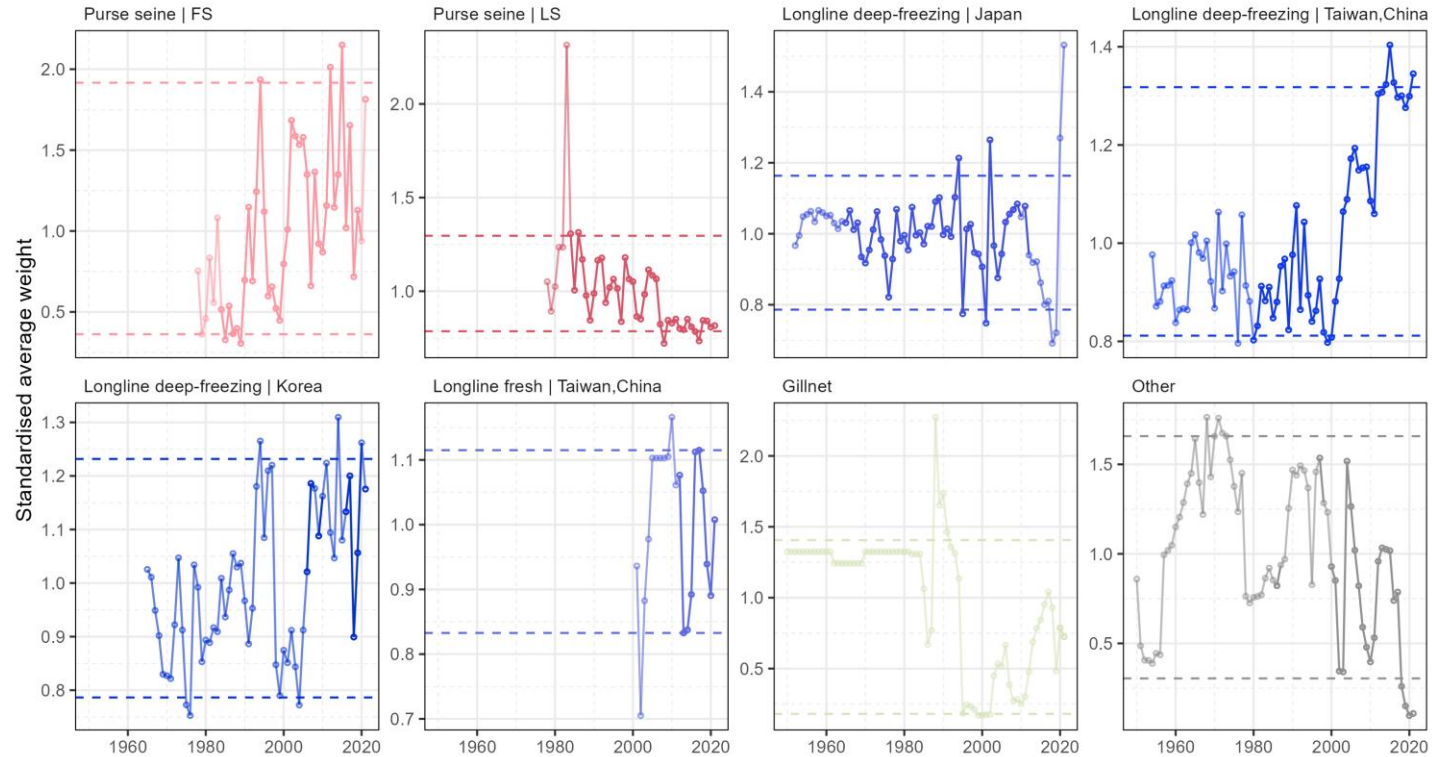
# TRENDS IN CPUE: FRESH LONGLINE



Annual nominal CPUE (standardised to the mean) of BET in LLF fisheries by main fleet and area

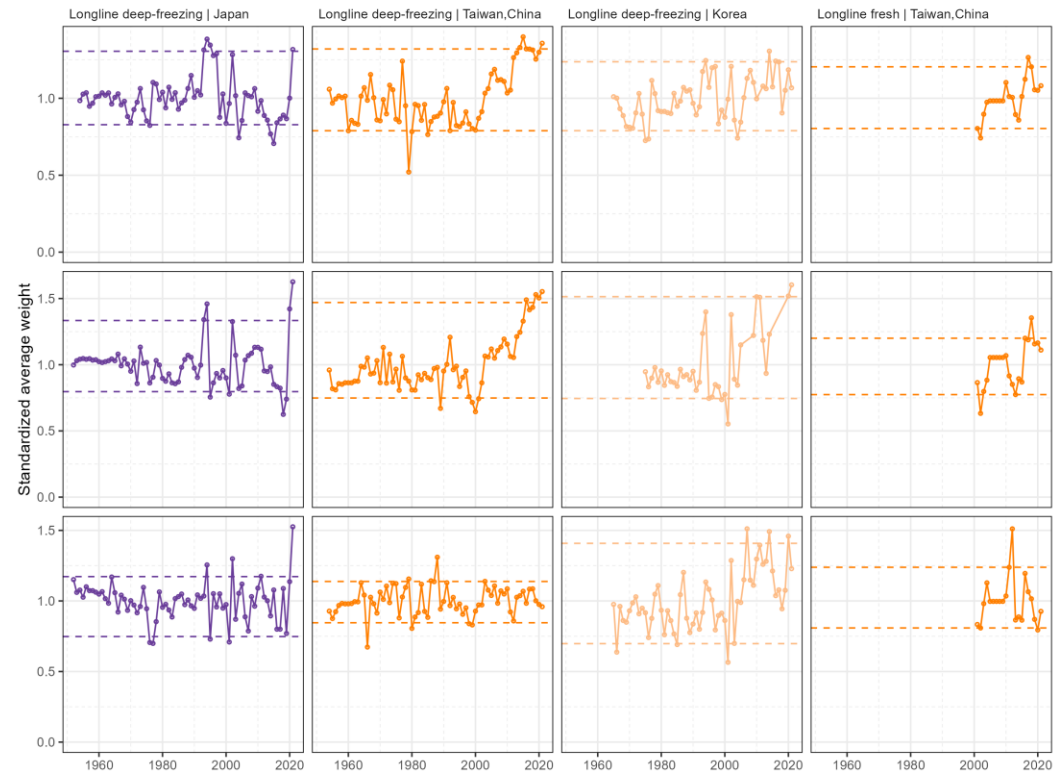


# TRENDS IN AVERAGE WEIGHT: MAIN FISHERIES



Annual estimated average weights (standardised to the mean) of BET by fishery

# TRENDS IN AVERAGE WEIGHT: LONGLINE BY AREA



Annual estimated average weights (standardised to the mean) of BET by main longline fishery and area



Food and Agriculture  
Organization of the  
United Nations

IOTC-2022-WPTT24-04

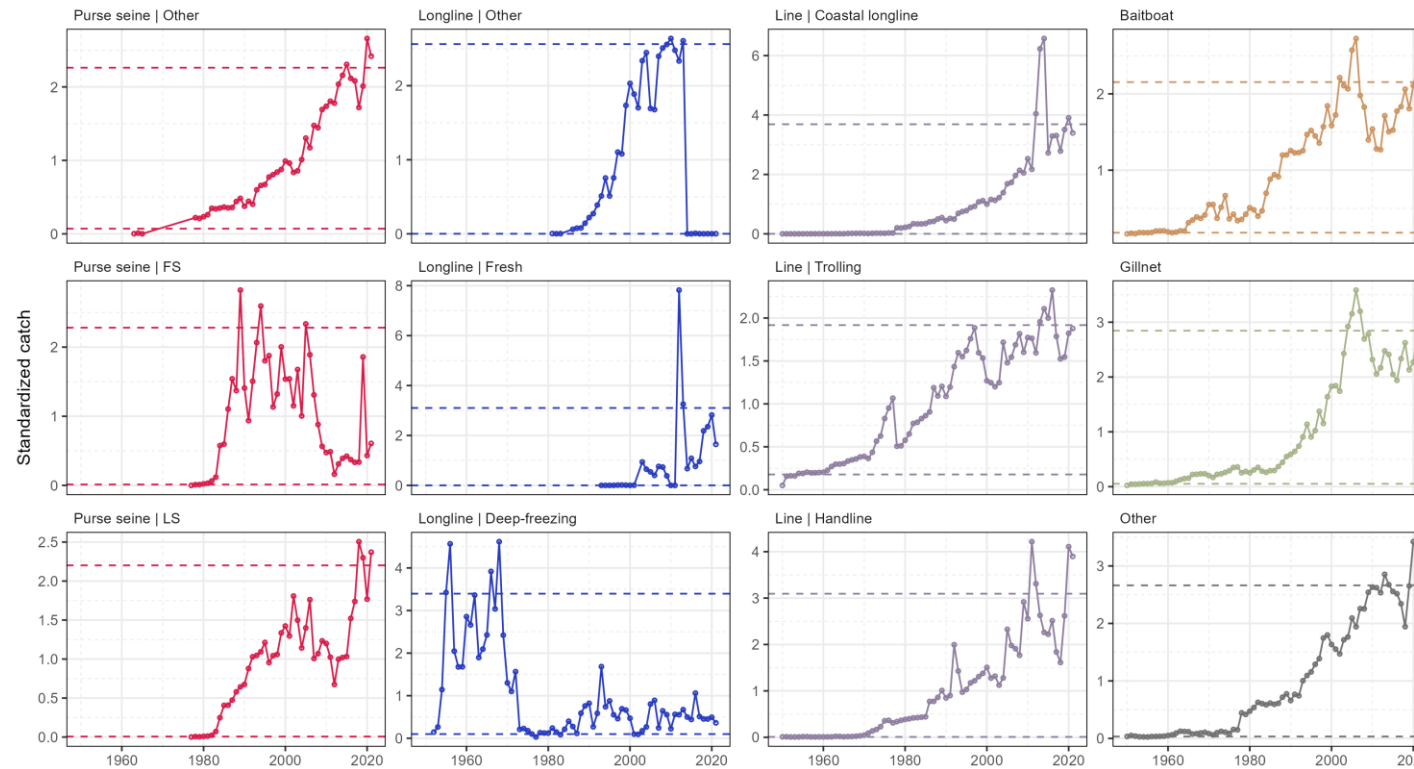


Indian Ocean Tuna Commission  
Commission des Thons de l'Océan Indien

# SKIPJACK TUNA

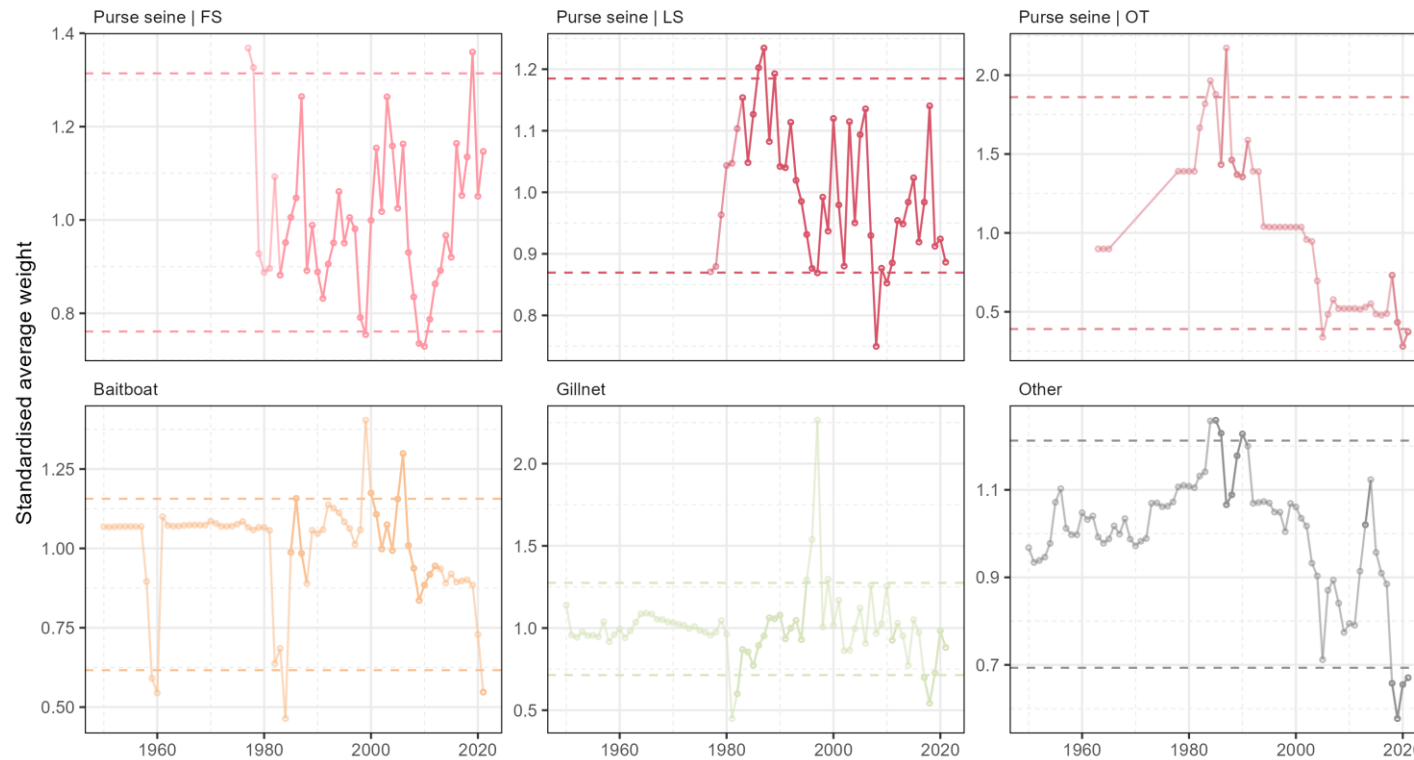
---

# TRENDS IN NOMINAL CATCH



Annual nominal catches (standardised to the mean) of SKJ by fishery

# TRENDS IN AVERAGE WEIGHT: MAIN FISHERIES



Annual estimated average weights (standardised to the mean) of SKJ by fishery



Food and Agriculture  
Organization of the  
United Nations

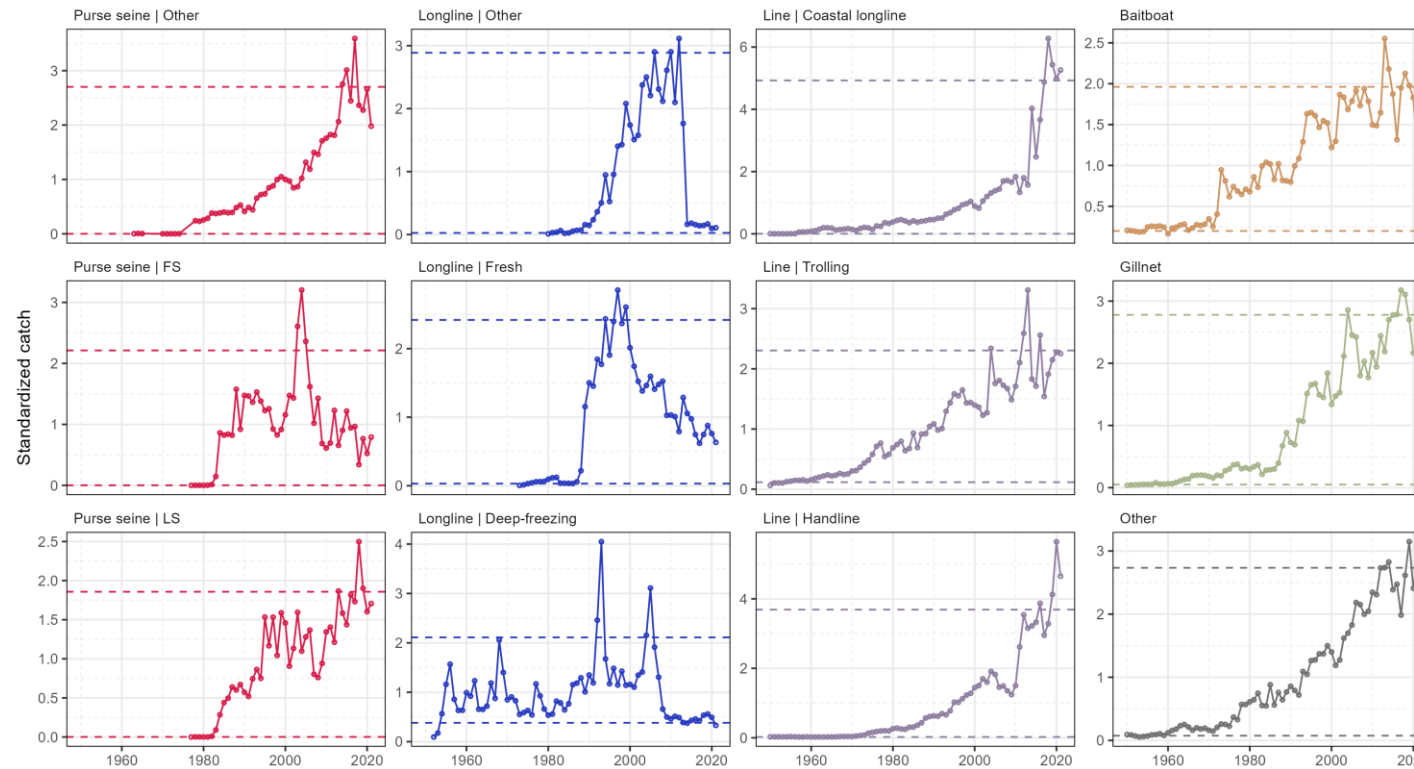
IOTC-2022-WPTT24-04



Indian Ocean Tuna Commission  
Commission des Thons de l'Océan Indien

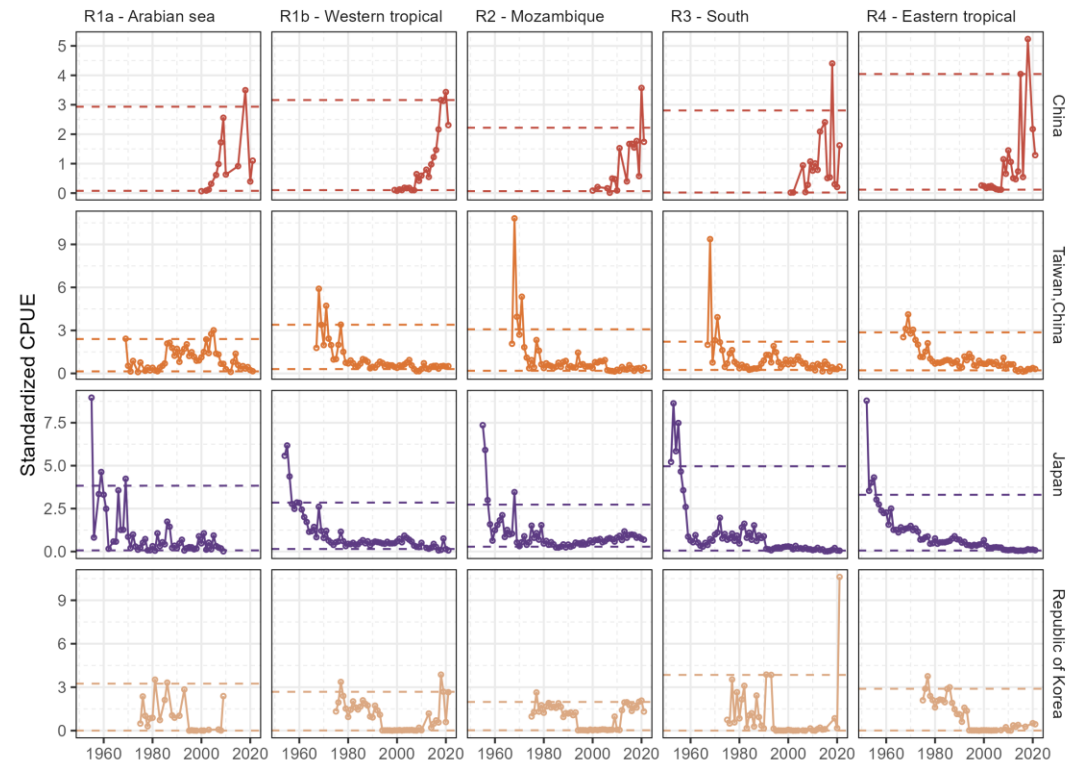
# YELLOWFIN TUNA

# TRENDS IN NOMINAL CATCH



Annual nominal catches (standardised to the mean) of YFT by fishery

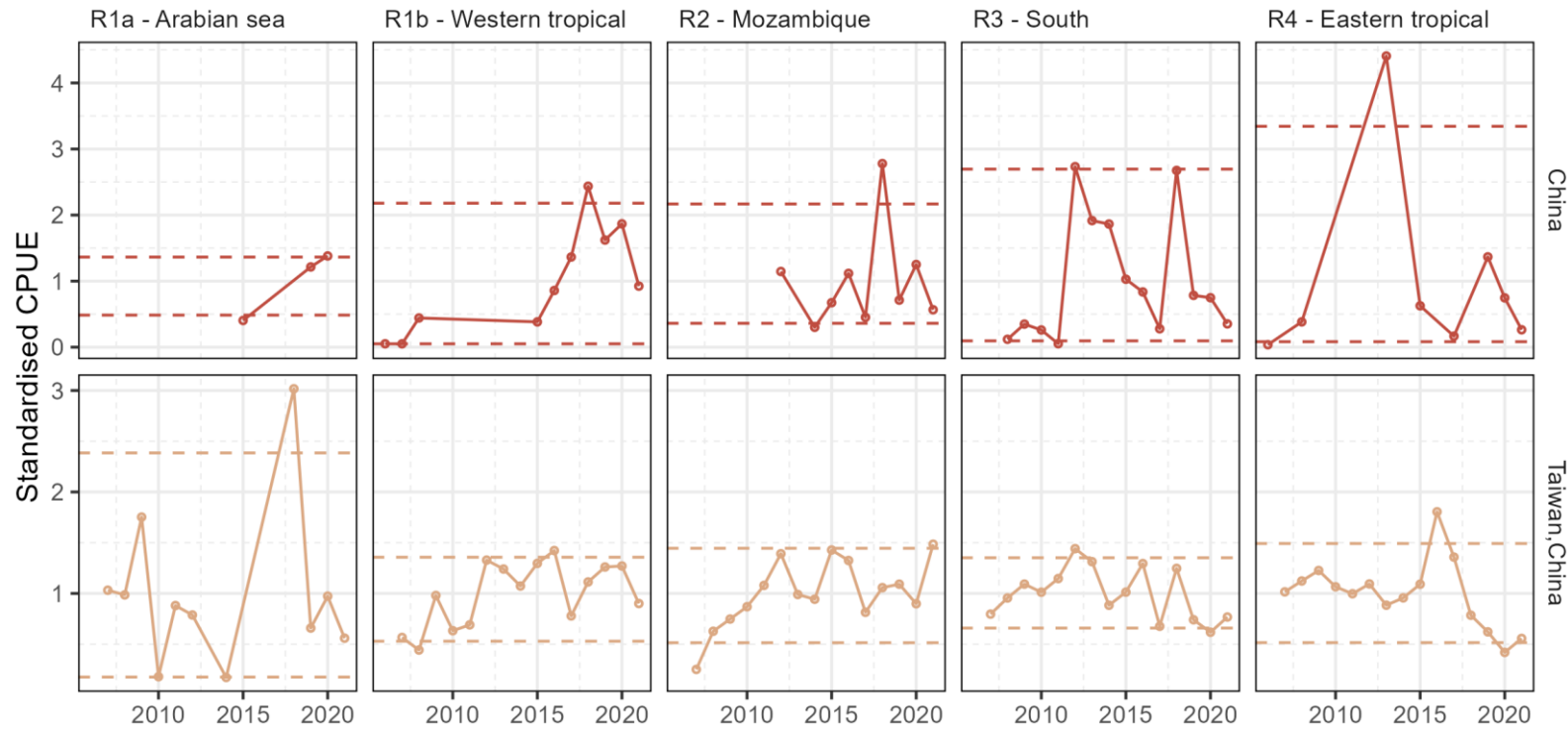
# TRENDS IN CPUE: DEEP-FREEZING LONGLINE



Annual nominal CPUE (standardised to the mean) of YFT in LLD fisheries by main fleet and area

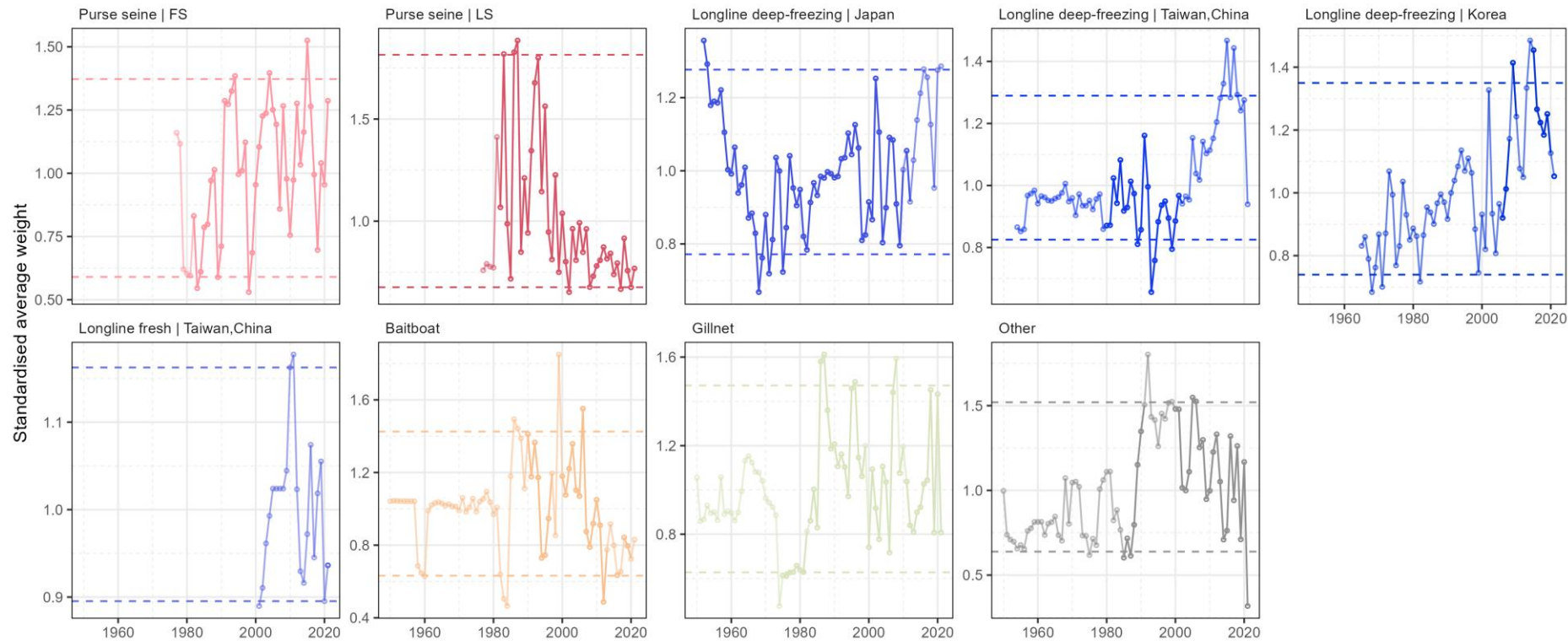


# TRENDS IN CPUE: FRESH LONGLINE



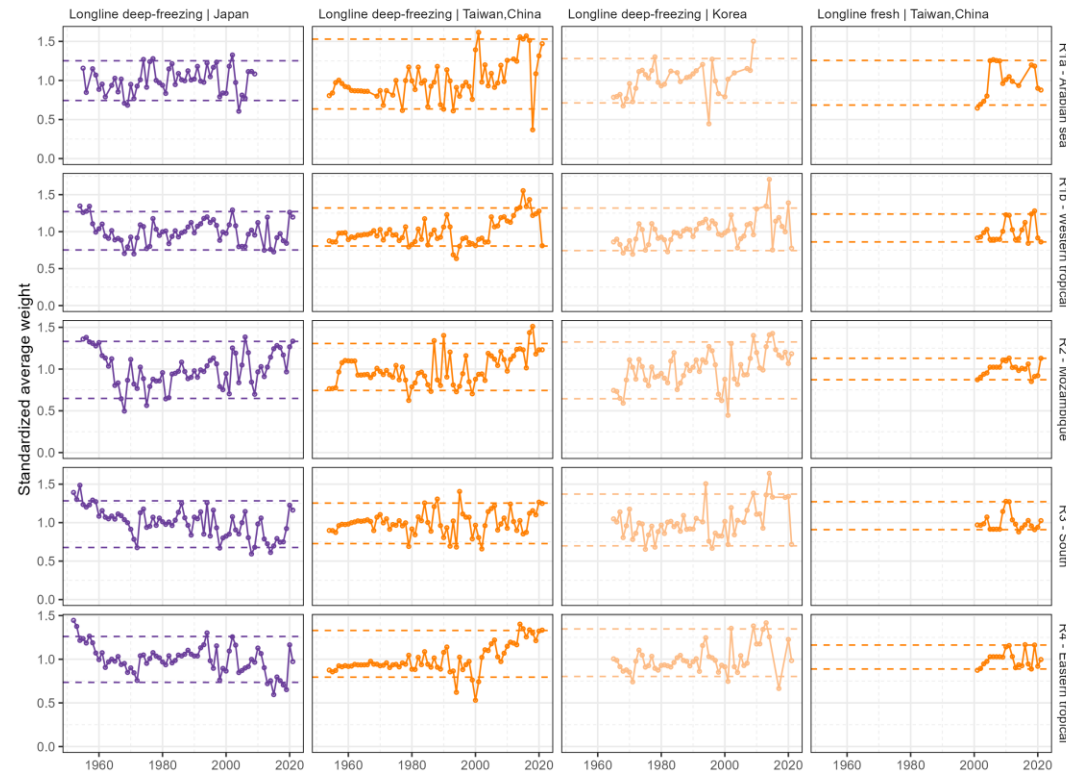
Annual nominal CPUE (standardised to the mean) of YFT in LLF fisheries by main fleet and area

# TRENDS IN AVERAGE WEIGHT: MAIN FISHERIES



Annual estimated average weights (standardised to the mean) of YFT by fishery

# TRENDS IN AVERAGE WEIGHT: LONGLINE BY AREA



Annual estimated average weights (standardised to the mean) of YFT by main longline fishery and area