



# STATUS OF MARLINS AND SAILFISH CATCHES RESOLUTION 18/05

*AUTHOR: IOTC SECRETARIAT*

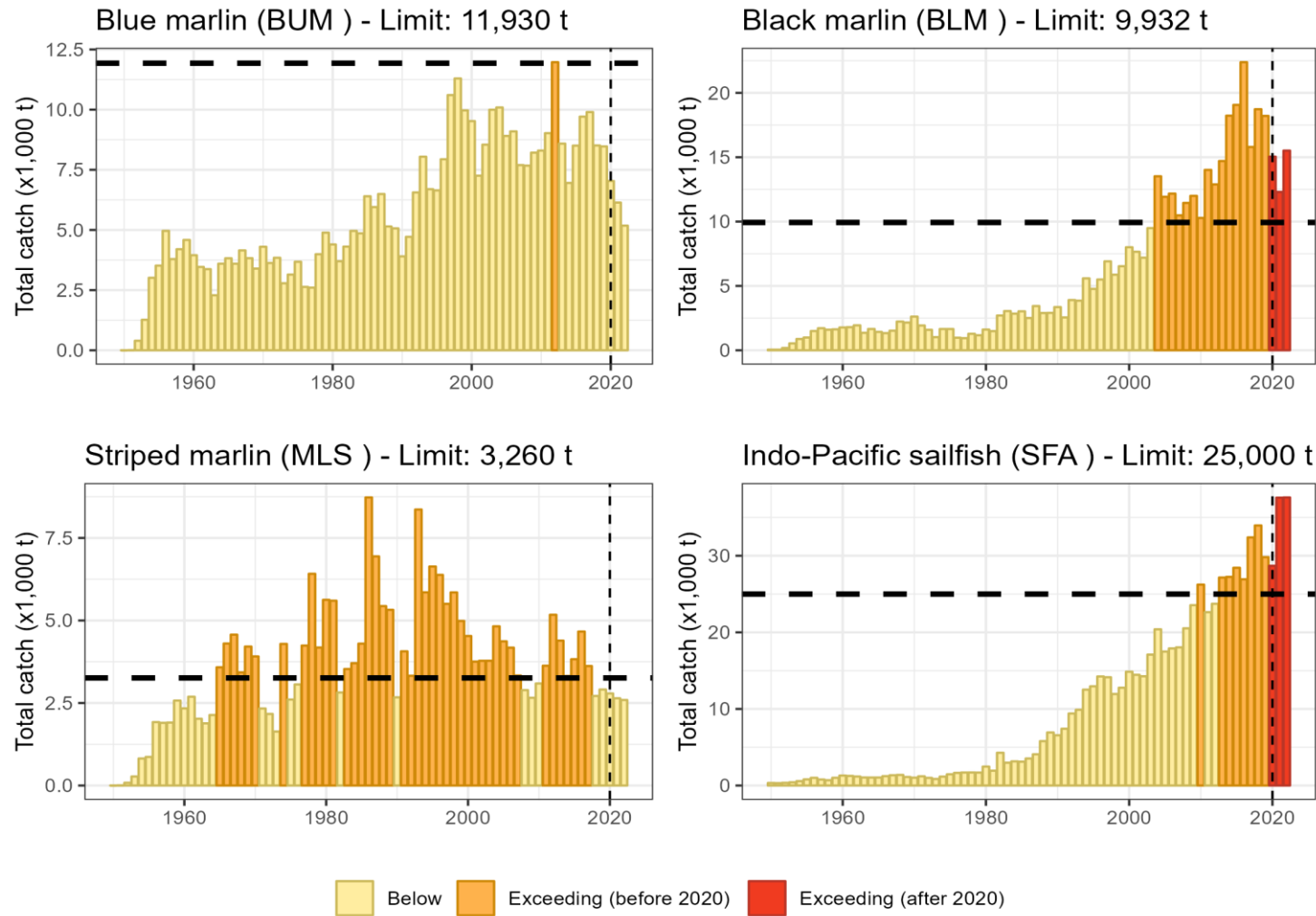


Figure 1: Status of marlin and sailfish catches in relation to the limits set out in Resolution 18/05. The horizontal dotted line indicates the catch limit while the vertical horizontal line indicates the period after which the limits apply

***Resolution 18/05, paragraph 4...***

4. If the average annual total catch of any of the species referred to in paragraph 2 in any two consecutive years period from 2020 onward exceeds the limits referred to in paragraph 3, the Commission shall review the implementation and effectiveness of the measures contained in this

Resolution and consider the adoption of additional conservation and management measures, as appropriate, by also taking into account the advice of the Scientific Committee referred to in paragraph 14

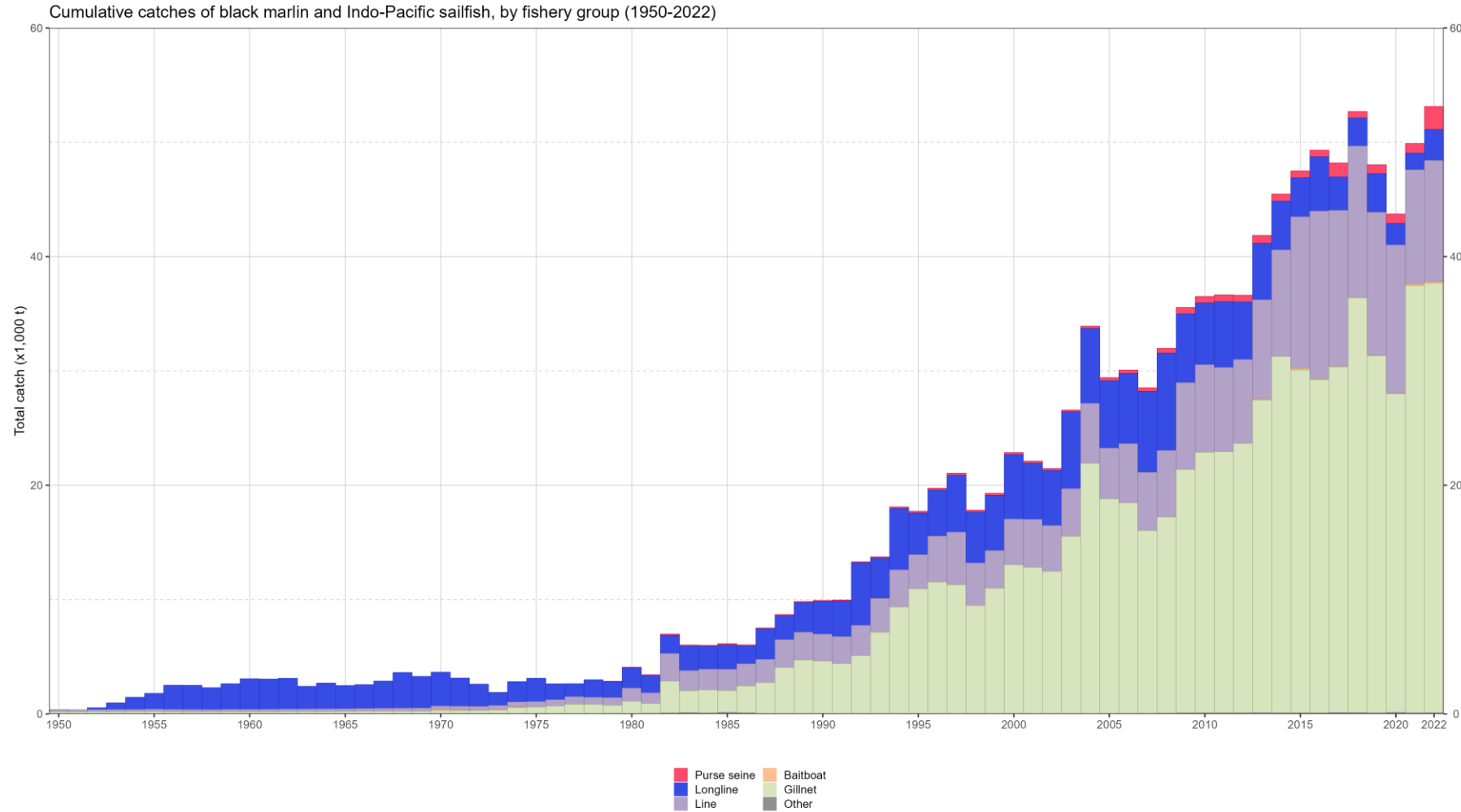


Figure 2: Annual time series of cumulative nominal absolute catches of black marlin and Indo-Pacific sailfish in metric tons (t) by fishery group for the period 1950-2022

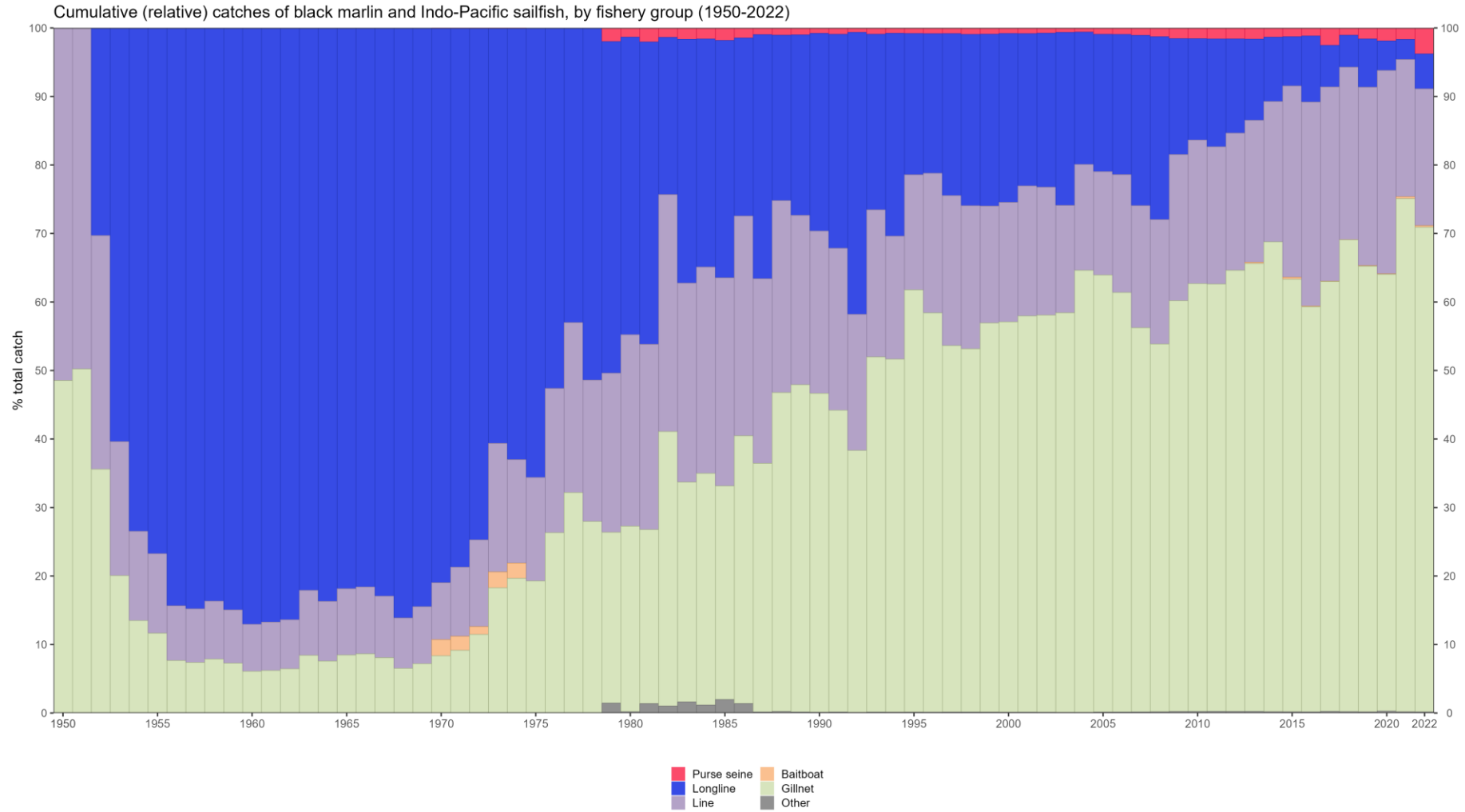


Figure 3: Annual time series of cumulative nominal relative catches of black marlin and Indo-Pacific sailfish in metric tons (t) by fishery for the period 1950-2022