



OVERVIEW OF FISHERIES DATA AVAILABLE FOR CPCs IN THE EASTERN INDIAN OCEAN

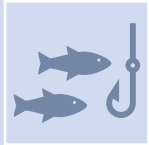
PURPOSE

To present a summary of fisheries data reported by CPCs present at the workshop (Eastern region)

CONTENTS:

- Summary of data status – related to major datasets
 - Retained catch
 - Catch and effort
 - Size frequency
- Active fishing vessels
- New fishery code - example
- Availability of annual retained catch
- Availability of geo-reference catch and effort
- Availability of size frequency

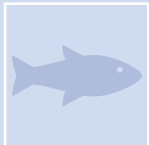
SUMMARY OF DATA STATUS



Fisheries are of various types, with mainly coastal fisheries, although not all CPCs report information for the coastal fisheries.



Information on industrial vessels is available in detail. Whereby, CPCs from the Eastern Indian Ocean have mainly longliners, both deep-freezing and fresh longline vessels



Spatial catches are well available for industrial fisheries, indicating that the industrial longline vessels also operate in the Western Indian Ocean.

SUMMARY OF DATA STATUS...CONT



Spatial catches for coastal fisheries are either not provided or low coverage in some cases, with only 19.84% of total retained catches.



Spatial catches for the industrial longline are more representative of the longline retained catches, although not all CPCs reported raised spatial catches.



Spatial catches for the industrial purse seine, on the other hand, are far less representative of the purse seine retained catches, only at 4.75% of the total catch purse seine catch reported.

SUMMARY OF DATA STATUS...CONT



Spatial catch and effort information of small-scale fisheries, particularly handline and coastal longline indicated that fisheries operated beyond their national jurisdiction



Size frequency data are available for several fisheries, although low coverage in some cases



ACTIVE FISHING VESSELS

GILLNET FISHERIES

NUMBER OF GILLNET VESSELS REPORTED BY CPCs FOR THE PERIOD 2015-2022

Fishery_group	Gear	ClassLow	ClassTypeCode	2015	2016	2017	2018	2019	2020	2021	2022	
Gillnet	G/L	10	LOA	0	0	1,044	755	874	0	0	0	
		15	LOA	0	549	688	527	0	0	0	0	
			GT	0	0	0	0	95,169	130,360	90,093	0	
			UNCL	0	0	0	0	18,241	20,367	14,673	0	
			LOA	0	0	1,716	1,603	1,620	1,130	1,130	1,175	
			GRT	5,107	5,011	9,003	9,000	11,419	0	10,463	10,185	
			GT	0	0	0	0	13,542	17,954	13,768	0	
		GILL	10	GT	0	0	0	0	2,656	3,465	1,865	0
			10	LOA	2,544	1,830	69	471	980	906	1,273	1,128
			14	LOA	55	0	0	0	0	0	0	0
			20	GT	0	0	0	0	1,138	703	356	0
			30	GT	0	0	0	0	271	105	2	0
			35	GRT	2,962	0	0	0	0	0	0	0
			50	GT	0	0	0	0	1	115	21	0
			GIOF	10	LOA	0	0	0	0	315	123	233

BAITBOAT FISHERIES

NUMBER OF BAITBOAT VESSELS REPORTED BY CPCs FOR THE PERIOD 2015-2022

Fishery_group	Gear	ClassLow	ClassTypeCode	2015	2016	2017	2018	2019	2020	2021	2022
Baitboat	BB		GT	0	0	0	0	7,196	8,988	3,744	0
			UNCL	0	0	0	0	5,901	1,215	835	0
		5	GT	0	0	0	0	456	208	648	0
		10	GT	0	0	0	0	122	69	57	0
		10	LOA	544	356	356	358	0	0	0	0
		20	GT	0	0	0	0	257	173	161	0
		24	LOA	0	184	149	147	365	373	0	0
		30	GT	0	0	0	0	14	25	0	0
		50	GT	0	0	0	0	0	7	0	0

LINE FISHERIES

NUMBER OF LINE VESSELS REPORTED BY CPCs FOR THE PERIOD 2015-2022

Fishery_group	Gear	ClassLow	ClassTypeCode	2015	2016	2017	2018	2019	2020	2021	2022
Line	HAND		GT	0	0	0	0	32,810	43,949	65,214	0
			UNCL	0	0	0	0	10,357	10,734	7,299	0
		0	LOA	0	0	0	274	324	55	84	76
		4	LOA	5	5	5	5	5	5	0	0
		5	GT	0	0	0	0	3,605	3,054	4,382	0
		10	GT	0	0	0	0	1,260	667	657	0
		10	LOA	85	130	337	177	168	744	1,320	1,835
		20	GT	0	0	0	0	473	456	321	0
		30	GT	0	0	0	0	77	87	38	0
		50	GT	0	0	0	0	5	180	325	0

Line fisheries....

Fishery_group	Gear	ClassLow	ClassTypeCode	2015	2016	2017	2018	2019	2020	2021	2022
Line	LLCO		GT	0	0	0	0	12,336	14,202	11,496	0
			UNCL	0	0	0	0	1,845	1,415	555	0
			0 LOA	0	0	854	378	405	422	422	422
			5 GT	0	0	0	0	2,657	2,611	2,008	0
			10 GT	0	0	0	0	472	133	350	0
			10 LOA	647	1,116	602	1,118	1,104	1,936	2,486	2,614
			15 LOA	23	32	48	487	600	855	0	0
			20 GT	0	0	0	0	494	236	104	0
			24 LOA	2	4	3	0	0	0	0	0
			30 GT	0	0	0	0	88	34	40	0
			50 GT	0	0	0	0	92	107	145	0

Line fisheries....

Fishery_group	Gear	ClassLow	ClassTypeCode	2015	2016	2017	2018	2019	2020	2021	2022
Line	TROL		GT	0	0	0	0	5,621	5,845	12,988	0
			UNCL	0	0	0	0	2,018	2,024	2	0
			1GRT	1,082	1,213	100	100	154	0	113	133
			5GT	0	0	0	0	1,031	838	1,186	0
			5LOA	9	9	9	9	9	9	0	0
			10GT	0	0	0	0	820	317	263	0
			10LOA	52	19	24	308	316	336	336	336
			20GT	0	0	0	0	217	76	77	0
			30GT	0	0	0	0	28	36	1	0

PURSE SEINE FISHERIES

NUMBER OF PURSE SEINE VESSELS REPORTED BY CPCs FOR THE PERIOD 2015-2022

Fishery_group	Gear	ClassLow	ClassTypeCode	2015	2016	2017	2018	2019	2020	2021	2022	
Purse Seine	PS	15	LOA	1	1	0	0	0	0	0	0	
		24	LOA	12	11	31	64	0	0	0	0	
		40	LOA	1	0	1	1	0	0	0	0	
		78	GT	0	0	0	0	389	279	289	0	
		200	GT	0	0	0	0	0	1	3	0	
	PSS	GT			0	0	0	0	1,263	1,322	1,739	0
			UNCL	0	0	0	0	835	834	0	0	
		GT	5	0	0	0	0	986	1,175	750	0	
			10	GRT	291	305	330	330	497	0	420	315
			10	0	0	0	0	1,451	1,742	1,040	0	
			14	LOA	393	329	286	238	236	228	227	219
			20	0	0	0	0	1,882	1,158	1,241	0	
			30	0	0	0	0	396	71	206	0	
			50	0	0	0	0	197	183	234	0	
			RIN	0	LOA	0	0	10	685	626	616	520
	10	LOA		415	870	933	472	738	1,386	1,386	728	
	RNOF	10	LOA	0	0	0	191	279	182	182	878	

NEW FISHERY CODE —

Expected fishery codes to use for coastal and industrial

- ❖ Fishery categorization;
- ❖ Type of operation;
- ❖ Purpose of fishery operation
- ❖ Operating area;
- ❖ Target species.

COASTAL FISHERIES

			Semi-industrial (AUNJ)	Small-scale	Subsistence
BBM					
	Pole-and-line	PL	PL.ME[SI]	PL.ME[SS]	
BBN					
	Pole-and-line	PL	PL.NM[SI]	PL.NM[SS]	
BS					
	Beach seine	BS		BS[SS]	BS[SU]
CN					
	Cast net	CN		CN[SS]	CN[SU]
DDSEI					
	Danish seine	DS		DS.DM[SS]	DS.DM[SU]
DSEI					
	Danish seine	DS	DS[SI]	DS[SS]	DS[SU]

COASTAL FISHERIES

			Semi-industrial (AUNJ)	Small-scale	Subsistence
GILL					
	Encircling gillnet	GE		GE.AS[SS]	GE[SU]
	Set gillnet	GS		GS[SS]	GS.AS[SU]
HAND					
	Handline	HL	HL[SI]	HL.ME[SS]	HL[SU]
HARP					
	Harpoon	HR		HR[SS]	HR[SU]
HATR					
	Handline and trolling line	HL+TL	HL+TL[SI]	HL+TL[SS]	HL+TL[SU]
HOOK					
	Hook and line	HL+TL+DL	HL+TL+DL[SI]	HL+TL+DL[SS]	

COASTAL FISHERIES

			Semi-industrial (AUNJ)	Small-scale	Subsistence
LIFT					
	Lift net	LN	LN[SI]	LN[SS]	LN[SU]
LLCO					
	Drifting longline	DL	DL[SI]	DL[SS]	
LLTR					
	Drifting longline and trolling line	DL+TL	DL+TL[SI]	DL+TL[SS]	
PSS					
	Purse seine	PS	PS[SI]	PS[SS]	
RIN					
	Ring net	RN	RN-DA[SI]	RN-DA[SS]	

COASTAL FISHERIES...

			Semi-industrial (AUNJ)	Small-scale	Subsistence
TRAP					
	Trap	TP		TP[SS]	TP[SU]
TRAW					
	Trawl	TR	TR[SI]	TR[SS]	TR[SU]
TROL					
	Trolling line	TL		TL[SS]	TL[SU]
TROLM					
	Trolling line	TL		TL.ME[SS]	
TROLN					
	Trolling line	TL		TL.NM[SS]	
UNCL					
	Unknown gear	UN	UN[SI]	UN[SS]	UN[SU]

LONGLINE FISHERIES

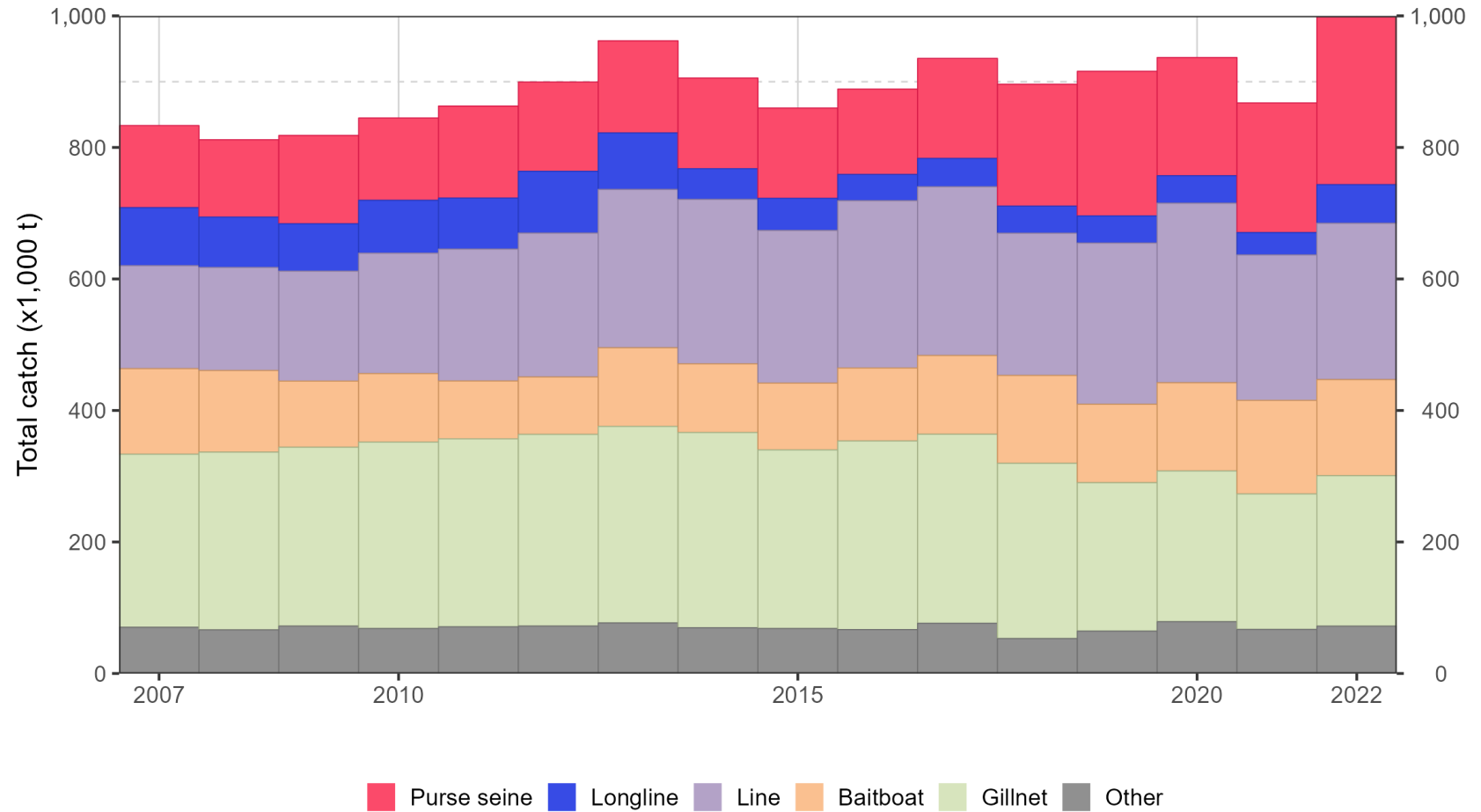
			Exploratory	Industrial	Semi-industrial (ABNJ)
FLL					
	Drifting longline	DL		DL.FR[IN]AL	DL.FR[IS]AL
LL					
	Drifting longline	DL		DL.DF[IN]AL	DL.DF[IS]AL
LLEX					
	Drifting longline	DL	DL.DF[EX]		

SURFACE FISHERIES

			Exploratory	Industrial	Semi-industrial (ABNJ)
BBOF					
	Pole-and-line	PL		PL- AF[IN]BF	PL-AF[IS]BF
HLOF					
	Handline	HL		HL- DA[IN]AL	HL-DA[IS]AL
PS					
	Purse seine	PS	PS[EX]	PS[IN]BF	PS[IS]BF
RNOF					
	Ring net	RN			RN-AF[IS]MS



AVAILABILITY OF ANNUAL RETAINED CATCH

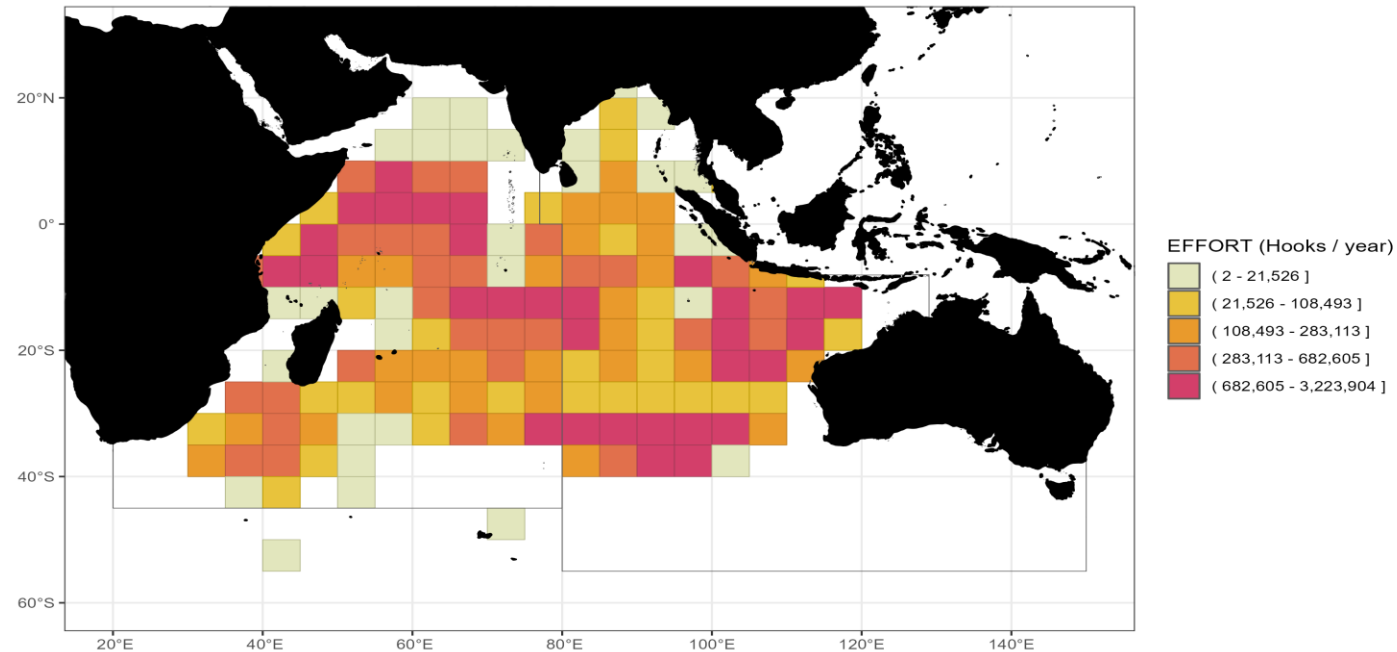


Cumulative time series of annual retained catches (metric tonnes; t) of IOTC species by fishery as reported by CPCs in the Eastern Indian Ocean for the period 2010-2022



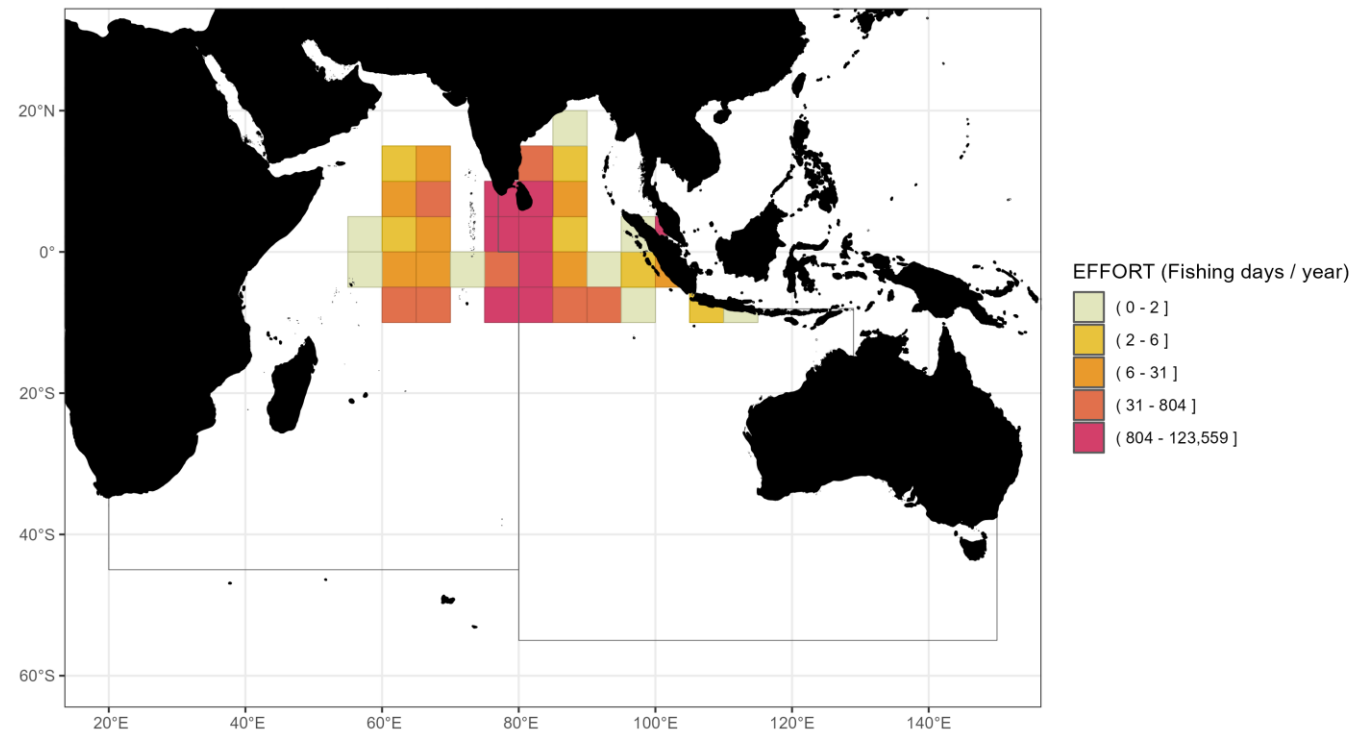
AVAILABILITY OF GEO-REFERENCE CATCH AND EFFORT

SPATIAL EFFORT DATA AVAIABLE - LONGLINE FISHERIES



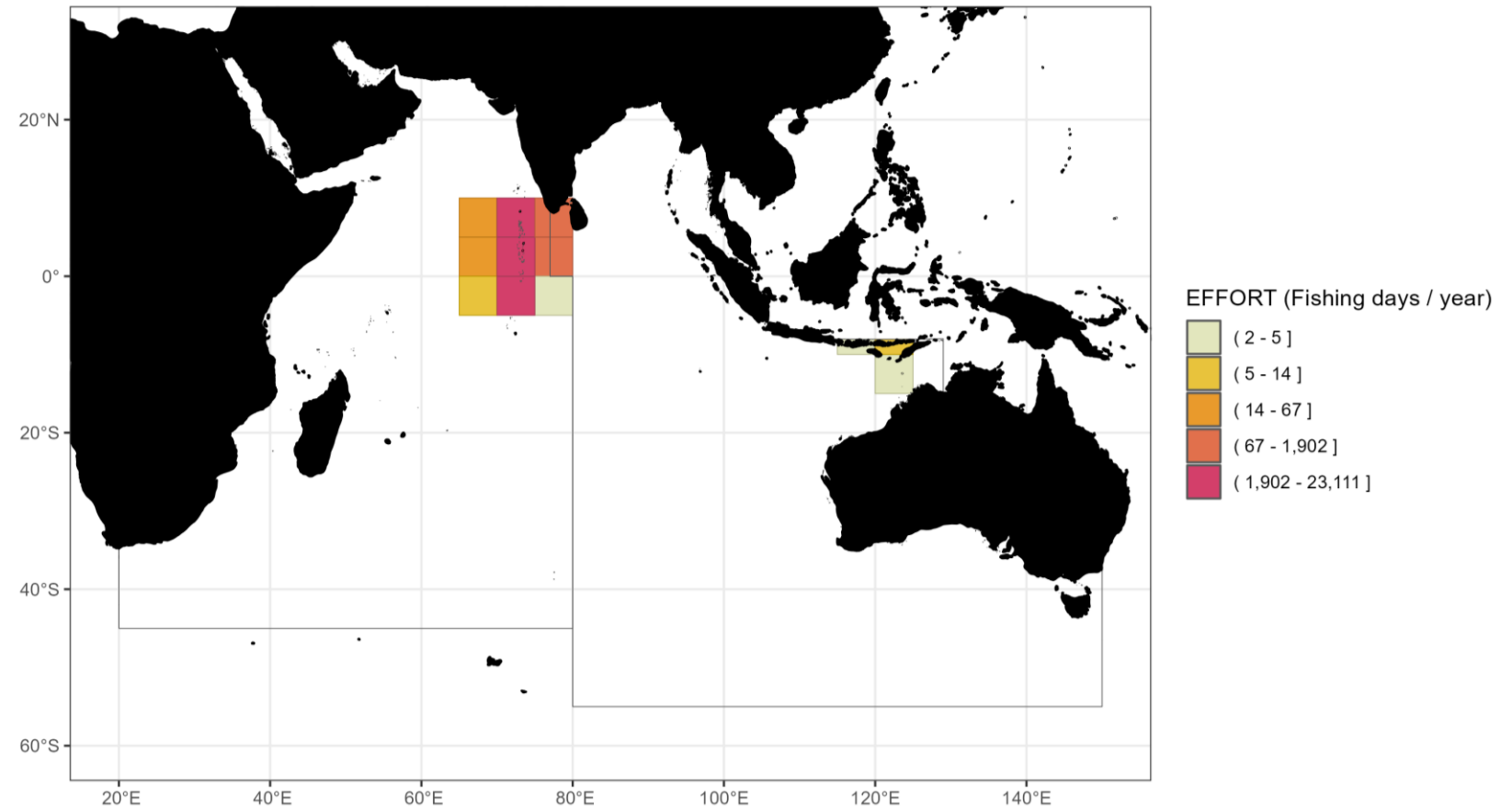
Distribution of effort for longline fisheries as reported by CPCs in the Eastern Indian Ocean for the period 2021-2022

SPATIAL EFFORT DATA AVAILABLE - GILLNET FISHERIES



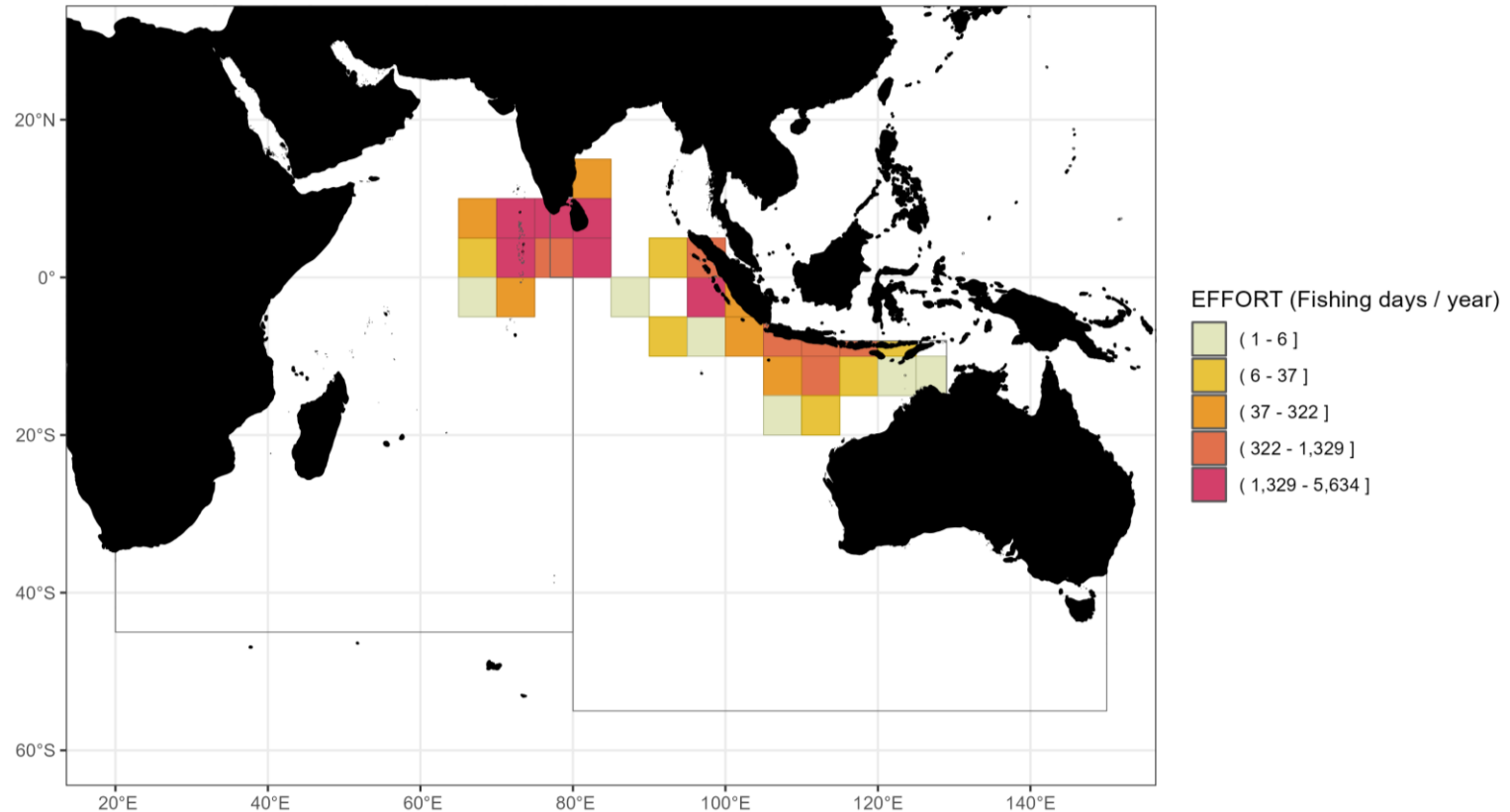
Distribution of effort for gillnet fisheries as reported by CPCs in the Eastern Indian Ocean for the period 2021-2022

SPATIAL EFFORT DATA AVAILIABLE -POLE AND LINE FISHERIES



Distribution of effort for pole and line fisheries as reported by CPCs in the Eastern Indian Ocean for the period
2021-2022

SPATIAL EFFORT DATA AVAIABLE -HANDLINE FISHERIES

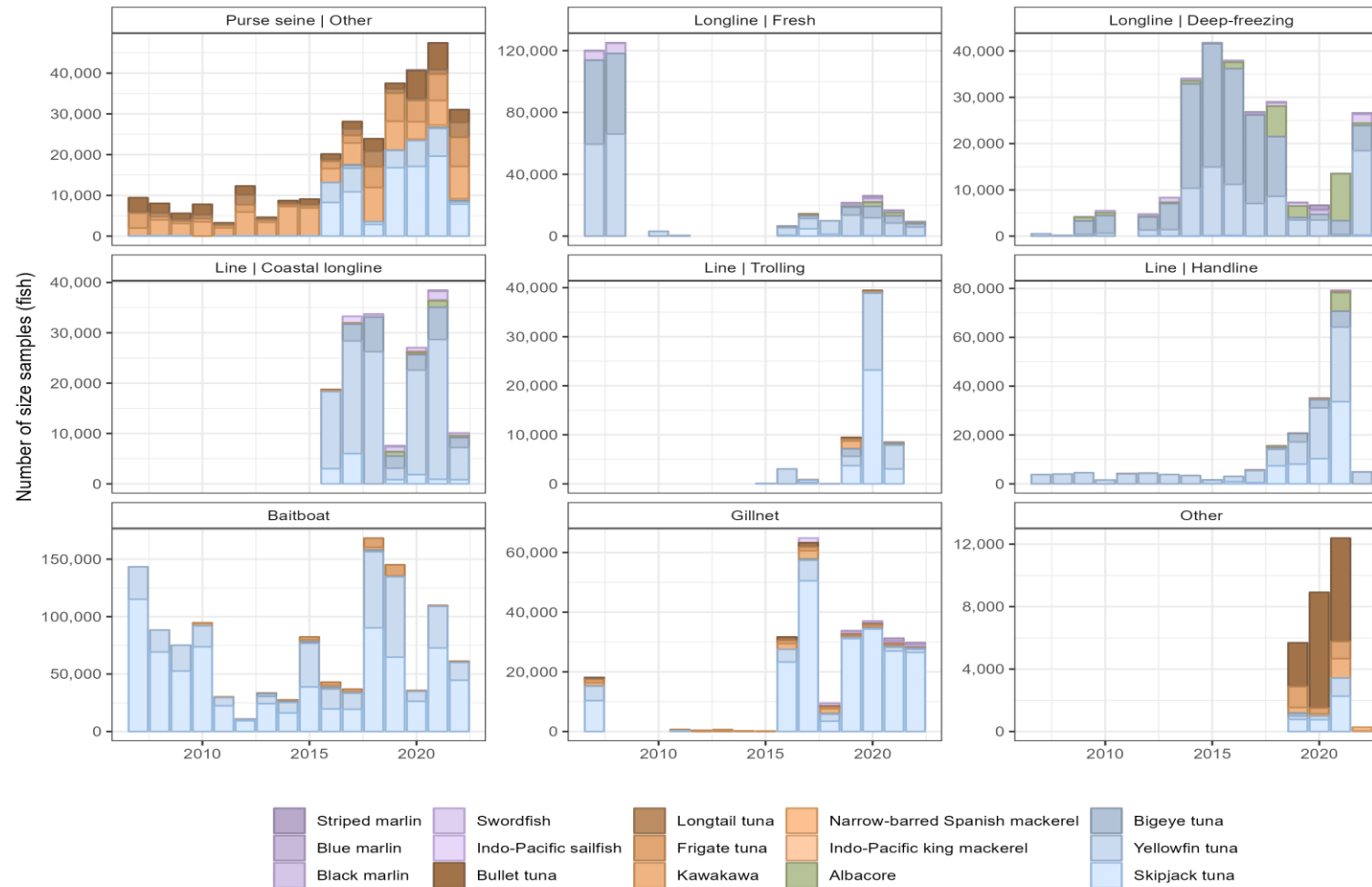


Distribution of effort for handline fisheries as reported by CPCs in the Eastern Indian Ocean for the period
2021-2022



AVAILABILITY OF SIZE FREQUENCY

ANNUAL SAMPLE AVAILABILITY



Cumulative annual number of size samples by IOTC species reported for the main fisheries for the period 2005-2022



SPECIES-SPECIFIC SAMPLING COVERAGE FOR EACH FISHERY

Longline fisheries



Sampling coverage (number of fish samples per metric tonne; fish/t) for each IOTC species as reported for the period 2007-2022

Purse seine fisheries



Sampling coverage (number of fish samples per metric tonne; fish/t) for each IOTC species as reported for the period 2007-2022

Gillnet fisheries



Sampling coverage (number of fish samples per metric tonne; fish/t) for each IOTC species as reported for the period 2007-2022

Coastal longline fisheries



Sampling coverage (number of fish samples per metric tonne; fish/t) for each IOTC species as reported for the period 2007-2022

Trolling fisheries



Sampling coverage (number of fish samples per metric tonne; fish/t) for each IOTC species as reported for the period 2007-2022

Pole and line fisheries



Sampling coverage (number of fish samples per metric tonne; fish/t) for each IOTC species as reported for the period 2007-2022