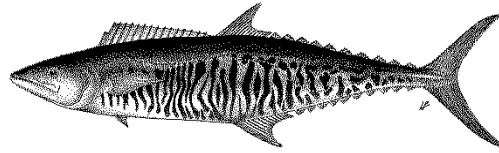


## APPENDIX 11

### EXECUTIVE SUMMARY: NARROW-BARRED SPANISH MACKEREL (2024)



**TABLE 1.** Status of narrow-barred Spanish mackerel (*Scomberomorus commerson*) in the Indian Ocean

Area <sup>1</sup>	Indicators	2023 stock status determination <sup>3</sup>
Indian Ocean	Catch (2023) <sup>2</sup> (t)	165,295
	Mean annual catch (2019-2023) (t)	162,610
	MSY (t) (80% CI)	161,000 (132,000 – 197,000)
	F <sub>MSY</sub> (80% CI)	0.60 (0.48–0.74)
	B <sub>MSY</sub> (t) (80% CI)	271,000 (197,000 – 373,000)
	F <sub>current</sub> /F <sub>MSY</sub> (80% CI)	1.07 (0.88 – 2.38)
	B <sub>current</sub> /B <sub>MSY</sub> (80% CI)	0.98 (0.44 – 1.19)
		<b>31%</b>

<sup>1</sup>Stock boundaries defined as the IOTC area of competence;

<sup>2</sup>Proportion of catch fully or partially estimated for 2023 62.8%;

<sup>3</sup>2021 is the final year that data were available for this assessment

Colour key	Stock overfished (SB <sub>year</sub> /SB <sub>MSY</sub> < 1)	Stock not overfished (SB <sub>year</sub> /SB <sub>MSY</sub> ≥ 1)
Stock subject to overfishing (F <sub>year</sub> /F <sub>MSY</sub> > 1)	31%	28%
Stock not subject to overfishing (F <sub>year</sub> /F <sub>MSY</sub> ≤ 1)	21%	19%
Not assessed/Uncertain/Unknown		

#### INDIAN OCEAN STOCK – MANAGEMENT ADVICE

**Stock status.** No new stock assessment was conducted in 2024 for narrow-barred Spanish mackerel and so the results are based on the results of the assessment carried out in 2023 which examined a number of data-limited methods including C-MSY, OCOM, and JABBA models (based on data up to 2021). These models produced stock estimates that are not drastically divergent because they shared similar dynamics and assumptions. The C-MSY model has been explored more fully and therefore is used to obtain estimates of stock status. The C-MSY analysis indicates that the stock is being exploited at a rate that exceeded F<sub>MSY</sub> in recent years and that the stock appears to be below B<sub>MSY</sub> and above F<sub>MSY</sub> (31% of plausible models runs). The analysis using OCOM model is more pessimistic and using JABBA incorporating gillnet CPUE indices is more optimistic. The JABBA model, however, is unable to estimate carrying capacity with a fair degree of certainty without additional prior constraints, indicating that the CPUE is either not informative or is conflicting with catch data. An analysis undertaken in 2013 in the Northwest Indian Ocean (Gulf of Oman) indicated that overfishing is occurring in this area and that localised depletion may also be occurring<sup>1</sup>. While the precise stock structure of Spanish mackerel remains unclear, recent research (IOTC-2020-SC23-11\_Rev1) provides strong evidence of population structure of Spanish mackerel within

<sup>1</sup> IOTC-2013-WPNT03-27

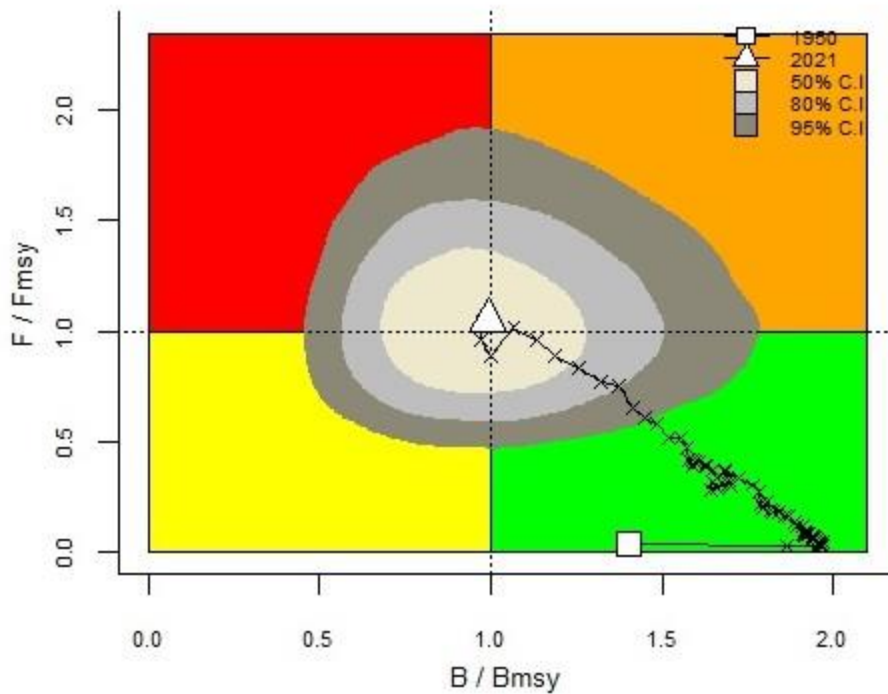
the IOTC area of competence, with at least 4 genetic populations identified. This increases the uncertainty in the assessment, which currently assumes a single stock of Spanish mackerel. Based on the C-MSY assessment, the stock appears to be **overfished** and **subject to overfishing** (Table 1, Fig. 1). However, the assessment using catch-only method is subjected to high uncertainty and is highly influenced by several prior assumptions.

**Outlook.** There is considerable uncertainty about the estimate of total catches. The continued increase in annual catches in recent years has further increased the pressure on the Indian Ocean narrow-barred Spanish mackerel stock. The apparent fidelity of narrow-barred Spanish mackerel to particular areas/regions is a matter for concern as overfishing in these areas can lead to localised depletion.

**Management advice.** The catch in 2022 was above the estimated MSY and the available gillnet CPUE shows a somewhat increasing trend in recent years although the reliability of the index as an abundance index remains unknown. Despite the substantial uncertainties, the stock is being fished above MSY levels and higher catches may not be sustained.

The following should also be noted:

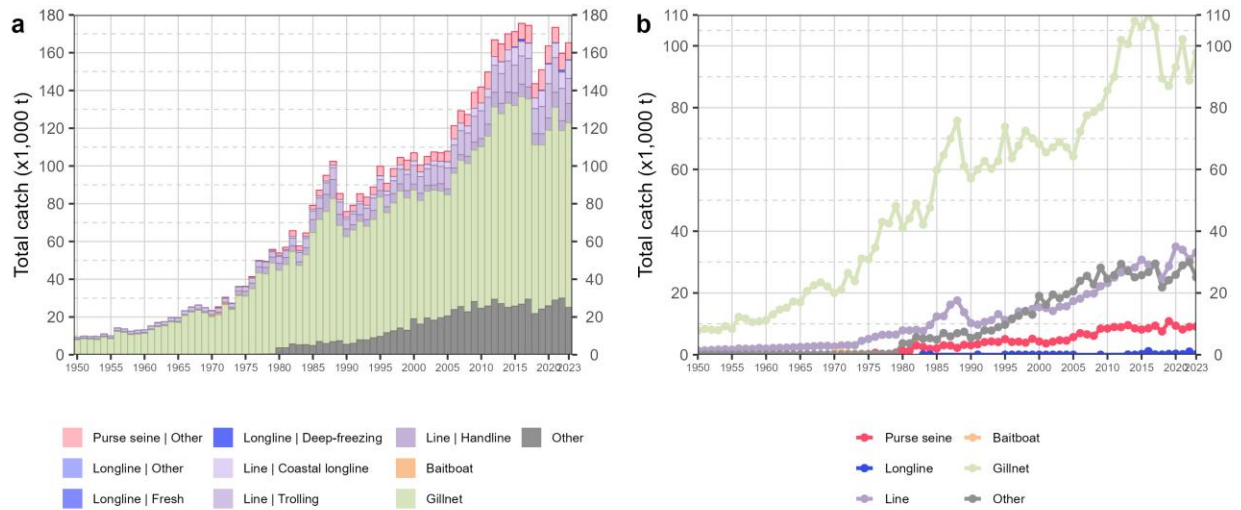
- Maximum Sustainable Yield for the Indian Ocean stock was estimated at 161,000 t (ranging between 132,000 t and 197,000 t, with catches for 2022 (178,403 t) exceeding this level);
- Limit reference points: the Commission has not adopted limit reference points for any of the neritic species under its mandate;
- Further work is needed to improve the reliability of the catch series. Reported catches should be verified or estimated, based on expert knowledge of the history of the various fisheries or through statistical extrapolation methods;
- Improvement in data collection and reporting is required if the stock is to be assessed using integrated stock assessment models;
- Given the increase in narrow-barred Spanish mackerel catch in the last decade, measures need to be taken to reduce catches in the Indian Ocean;
- Research emphasis should be focused on collating catch per unit effort (CPUE) time series for the main fleets, size compositions, exploring alternative approaches for estimating abundance (e.g., close-kin mark-recapture), and gaining a better understanding of stock structure and life trait history parameters (e.g. estimates of growth, natural mortality, maturity, etc.);
- There is a lack of information submitted by CPCs on total catches, catch and effort and size data for neritic tunas, despite their mandatory reporting status. In the case of 2022 catches, 65.9% of the total catches of narrow-barred Spanish mackerel were either fully or partially estimated by the IOTC Secretariat, which increases the uncertainty of the stock assessments using these data. Therefore, the management advice to the Commission includes the need for CPCs to comply with IOTC data requirements per Resolution [15/01](#) and [15/02](#).



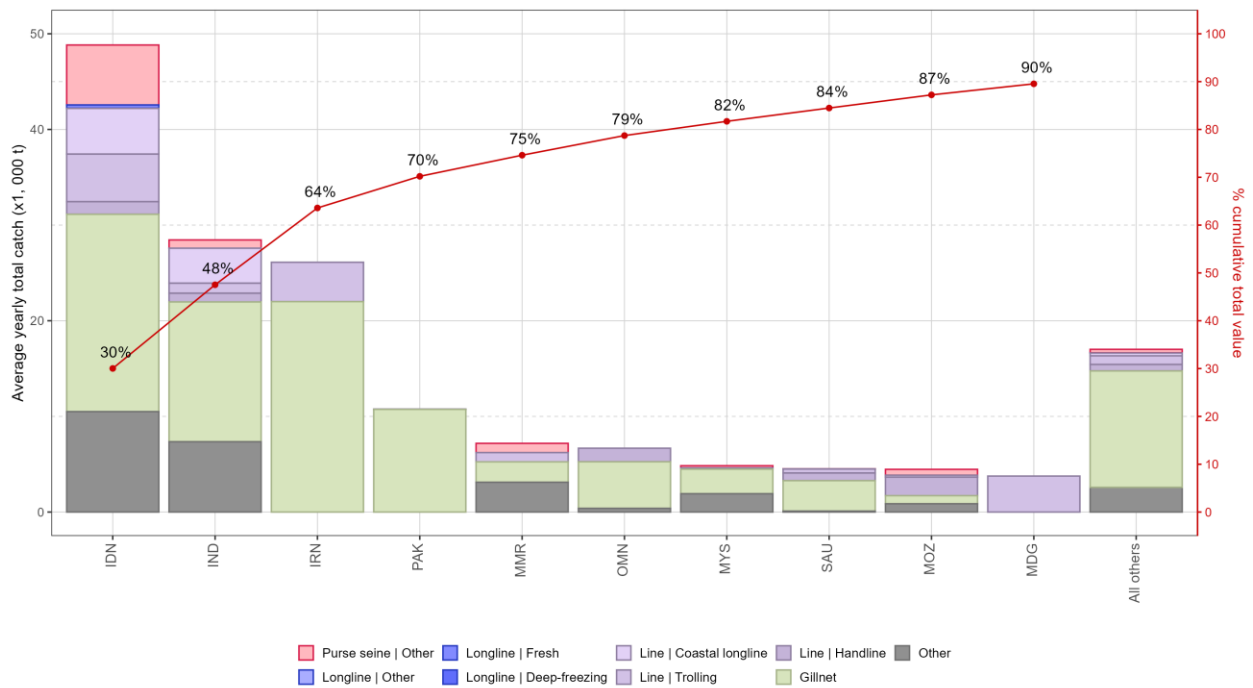
**Fig. 1.** Narrow-barred Spanish Mackerel OCOM Indian Ocean assessment Kobe plot. The Kobe plot presents the trajectories (median) for the range of plausible model trajectories included in the formulation of the final management advice. The shaded contour lines represent 50%, 80%, and 95% confidence intervals of estimated stock status in 2021

***Fisheries overview.***

- **Main fisheries (mean annual catch 2019-2023):** narrow-barred spanish mackerel are caught using gillnet (57.7%), followed by line (19.9%) and other (16.5%). The remaining catches taken with other gears contributed to 5.9% of the total catches in recent years (**Fig. 2**).
- **Main fleets (mean annual catch 2019-2023):** the majority of narrow-barred spanish mackerel catches are attributed to vessels flagged to Indonesia (30%) followed by India (17.5%) and I. R. Iran (16.1%). The 29 other fleets catching narrow-barred spanish mackerel contributed to 36.3% of the total catch in recent years (**Fig. 3**).



**Fig. 2.** Annual time series of (a) cumulative nominal catches (t) by fishery and (b) individual nominal catches (t) by fishery group for narrow-barred Spanish mackerel during 1950-2023



**Fig. 3.** Mean annual catches (t) of narrow-barred Spanish mackerel by fleet and fishery between 2019 and 2023, with indication of cumulative catches by fleet