



# STATUS OF MARLINS AND SAILFISH CATCHES - RESOLUTION 18/05

*AUTHOR: IOTC SECRETARIAT*

# PURPOSE

To provide participants in the 23<sup>rd</sup> Session of the IOTC Working Party on Billfish (WPB23) with a review of the status of the information available on marlins and sailfish species as required by resolution 18/05

## RESOLUTION 18/05, PARAGRAPH 4...

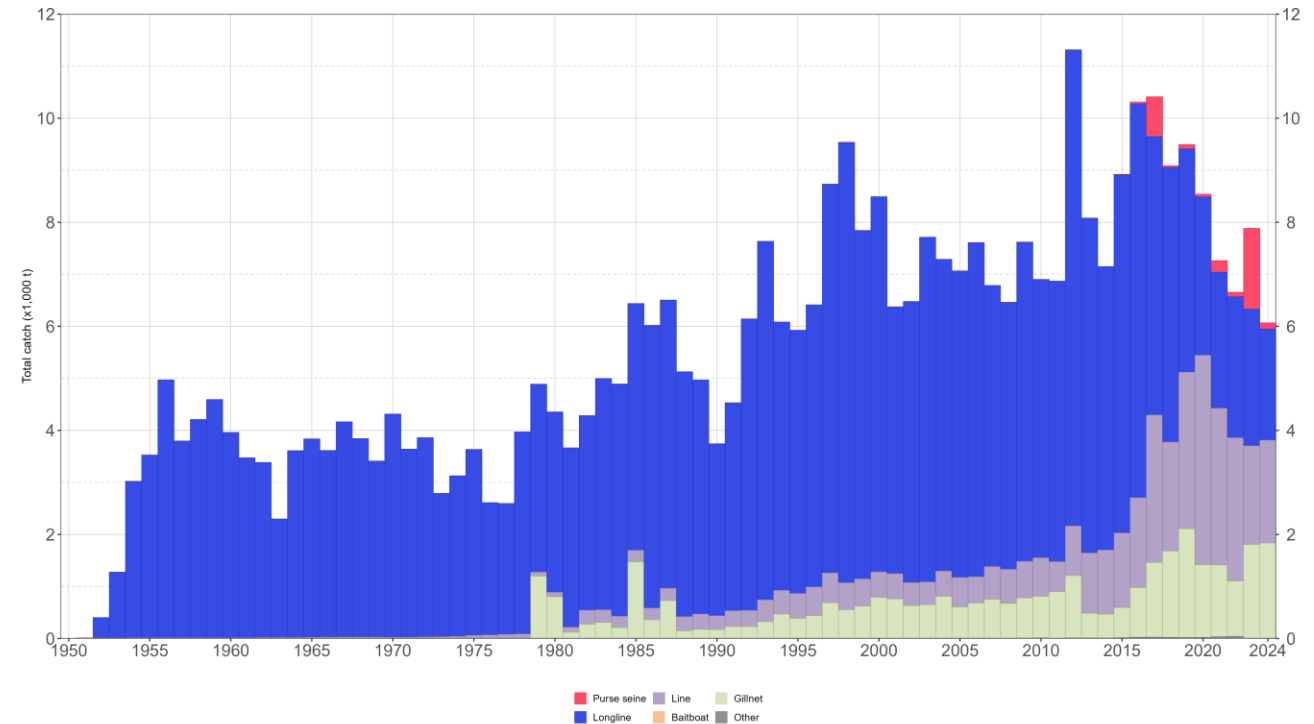
If the average annual total catch of any of the species referred to in paragraph 2 in any two consecutive years period from 2020 onward exceeds the limits referred to in paragraph 3, the Commission shall review the implementation and effectiveness of the measures contained in this Resolution and consider the adoption of additional conservation and management measures, as appropriate, by also taking into account the advice of the Scientific Committee referred to in paragraph 14.

# CATCH UPDATES

There have been significant revision of historical catches of billfish species overall. Where catches for some billfish species increase and some decline historically. This had effect of the catch limits set for some species.

## BLUE MARLIN:

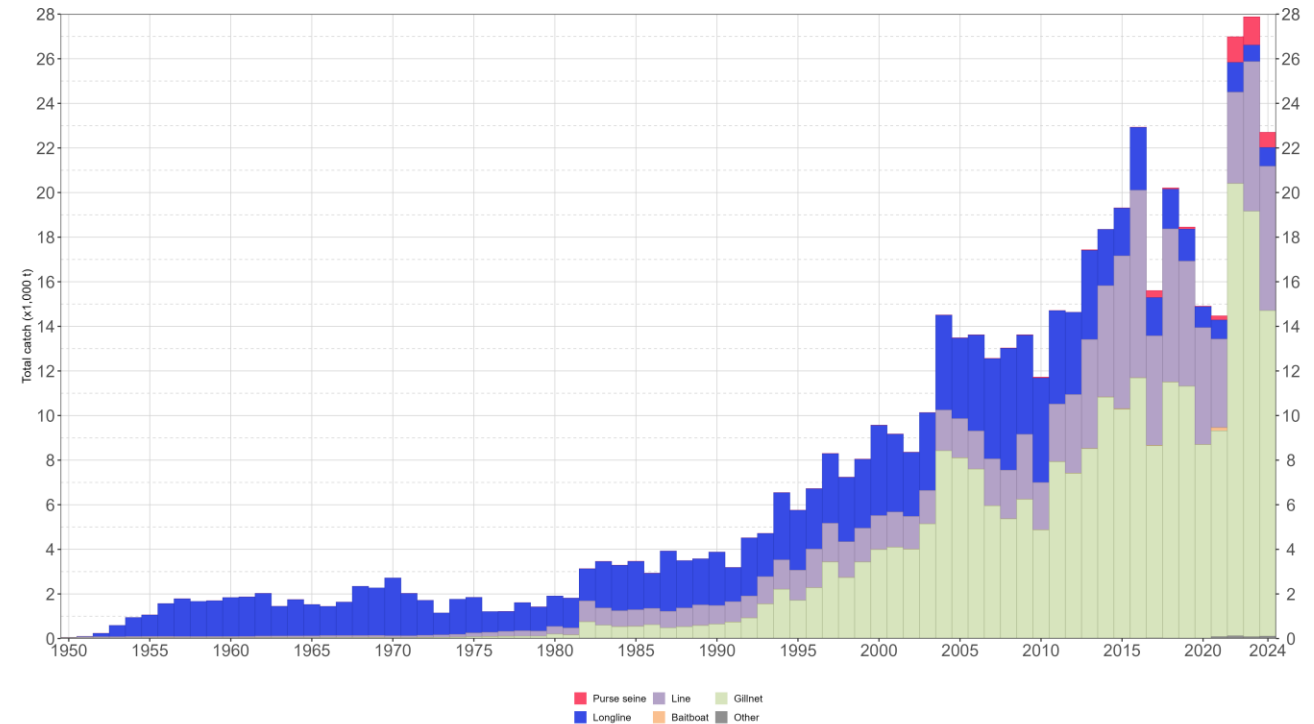
- ❖ Historical catches have decreased by approximately 5% compared to the data used to set the limit, with the highest decline of 28% occurring in 2004.
- ❖ The limit was originally set at 11,930 t, but the new maximum catch recorded was 11,285 t in 2012.
- ❖ The limit was based on an average catch of 12,752 t (2009-2014), with the catch increasing to 18,000 t in 2015.
- ❖ The current average catch for 2009-2014 is 7,974 t.



Cumulative catches of blue marlin, by fishery group (1950-2024)

# BLACK MARLIN

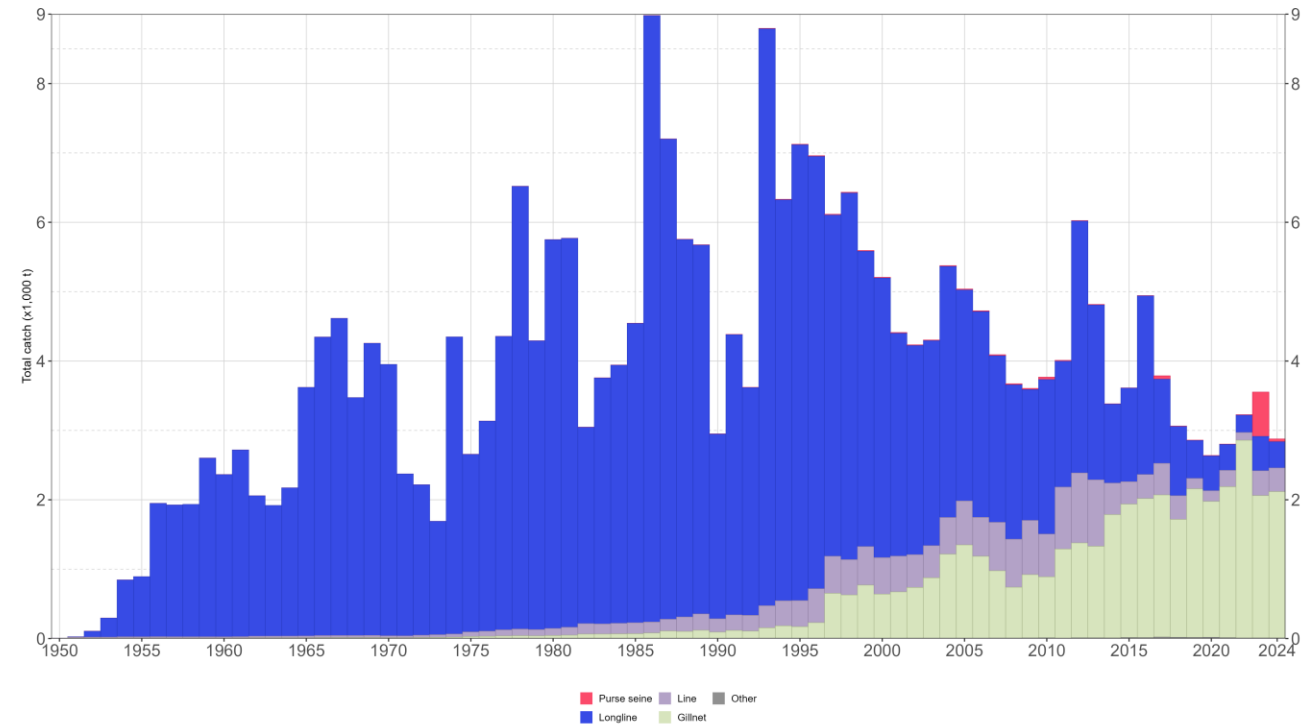
- Historical catches increased due to re-estimation.
- The limit was set at 9,932 t, while the average catch from 2009-2014 was 13,546 t.
- The current average catch for 2009-2014 is 15,087 t



Cumulative catches of black marlin, by fishery group (1950-2024)

## STRIPED MARLIN

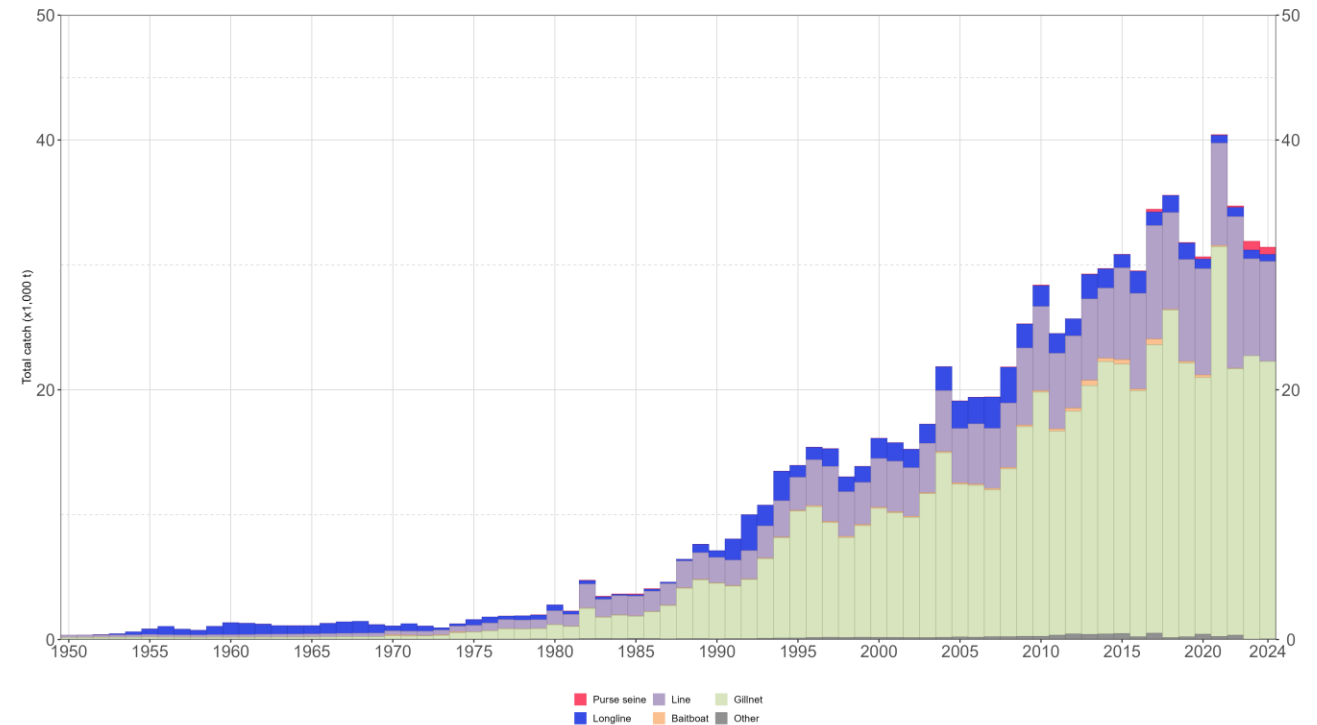
- Historical catches increased by 14% overall for certain years.
- The limit was set at 3,260 t, with the average catch from 2009-2014 at 3,882t.
- The current average catch for 2009-2014 is 4,268 t.



Cumulative catches of striped marlin, by fishery group (1950-2024)

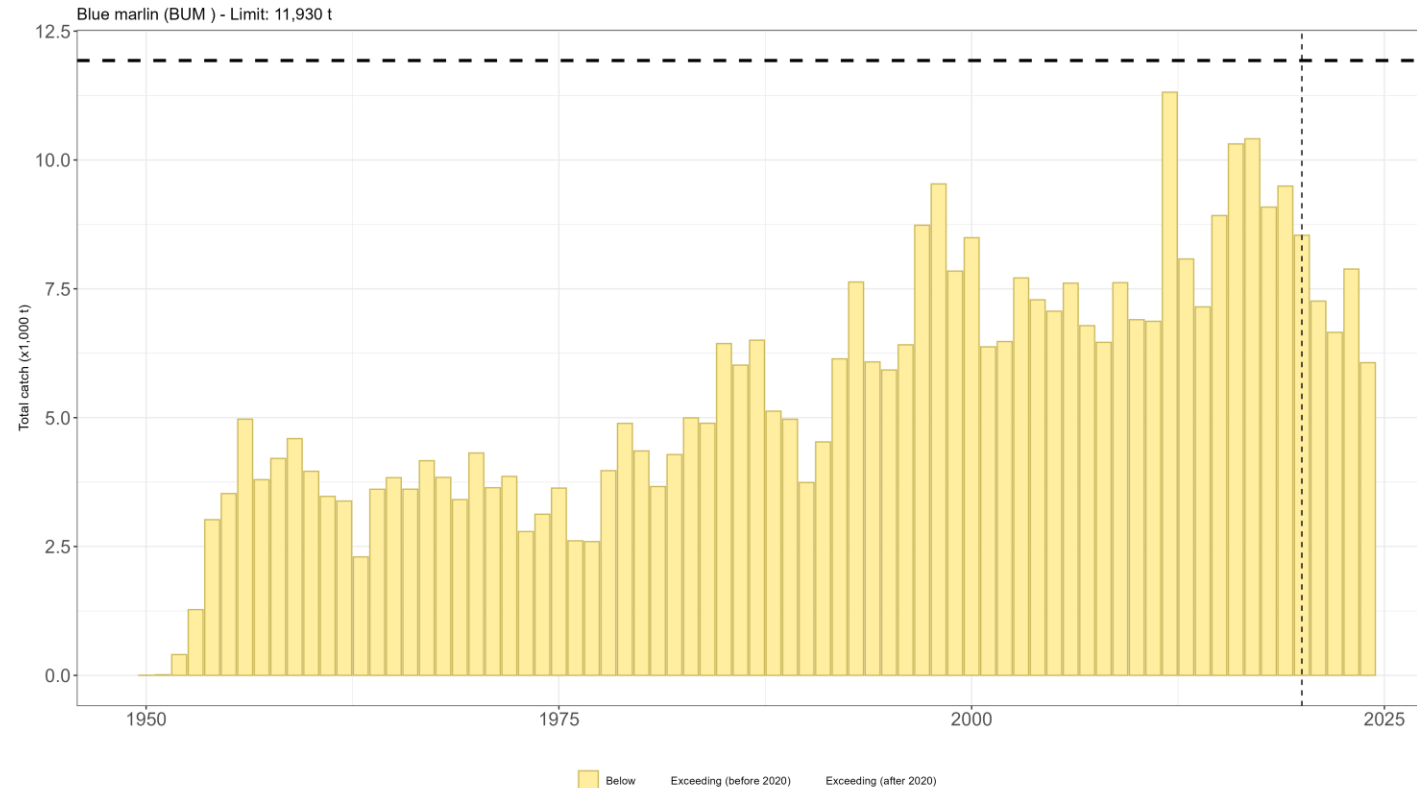
## INDO-PACIFIC SAILFISH

- Catches increased by 8% overall, attributed to the revision of historical data.
- The limit was set at 25,000 t, while the average catch from 2009-2014 was 27,539 t.
- The current average catch for 2009-2014 is 27,147 t.
- The maximum catch reached 40,000 t in 2021.



Cumulative catches of Indo-Pacific sailfish, by fishery group (1950-2024)

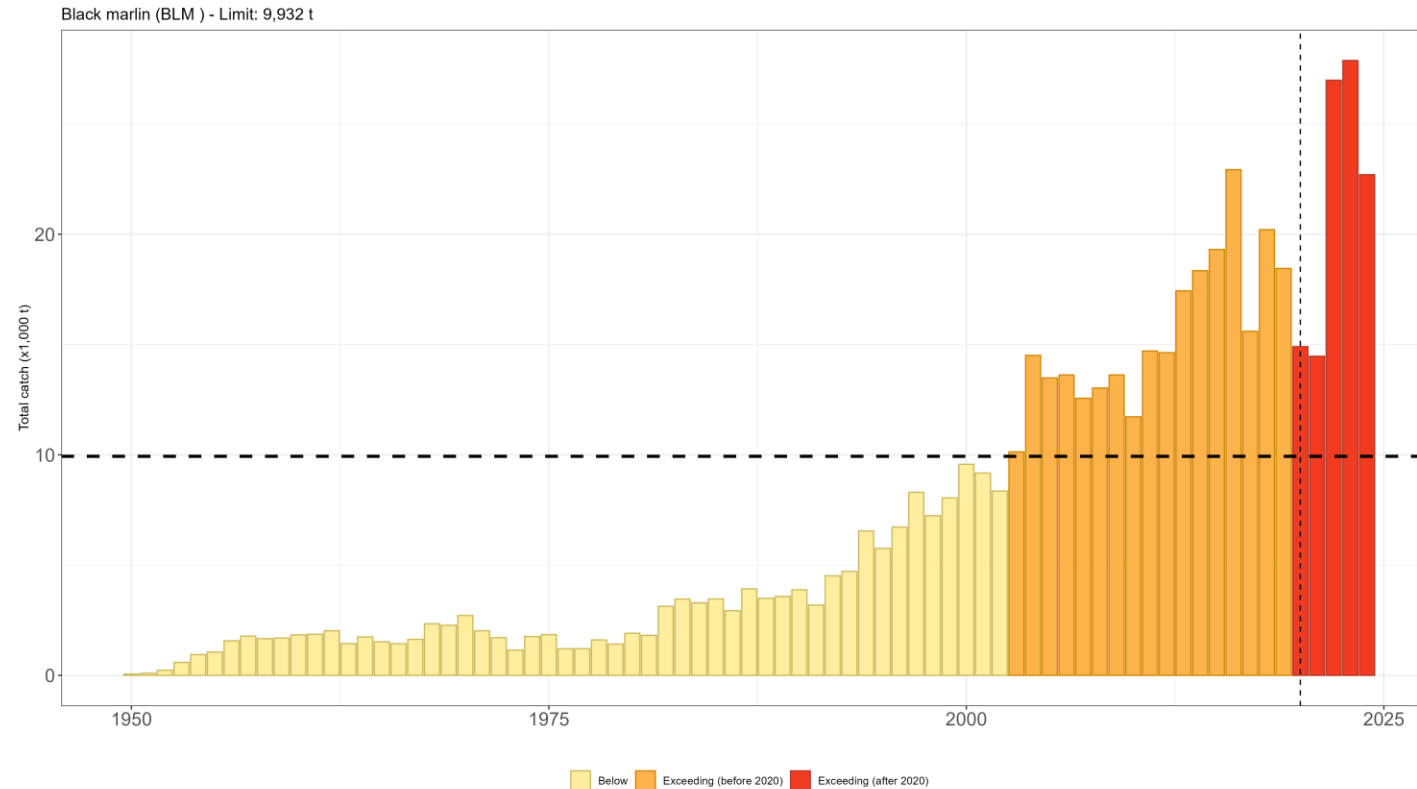
# CATCH STATUS IN COMPARISON TO THE ESTABLISHED CATCH LIMITS - BUM



Blue marlin catch limit: 11,285 t



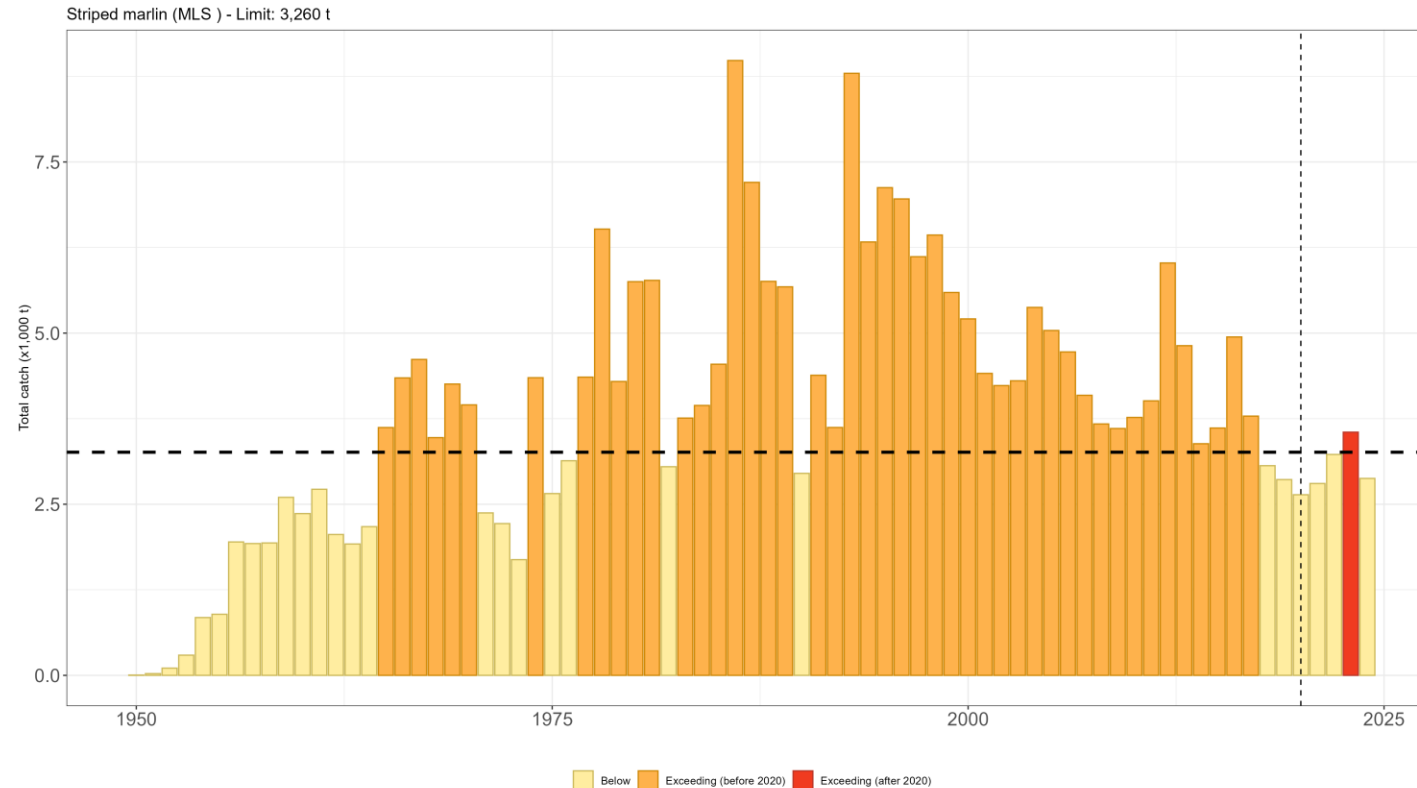
# CATCH STATUS IN COMPARISON TO THE ESTABLISHED CATCH LIMITS - BLM



Black marlin catch limit: 9,932 t

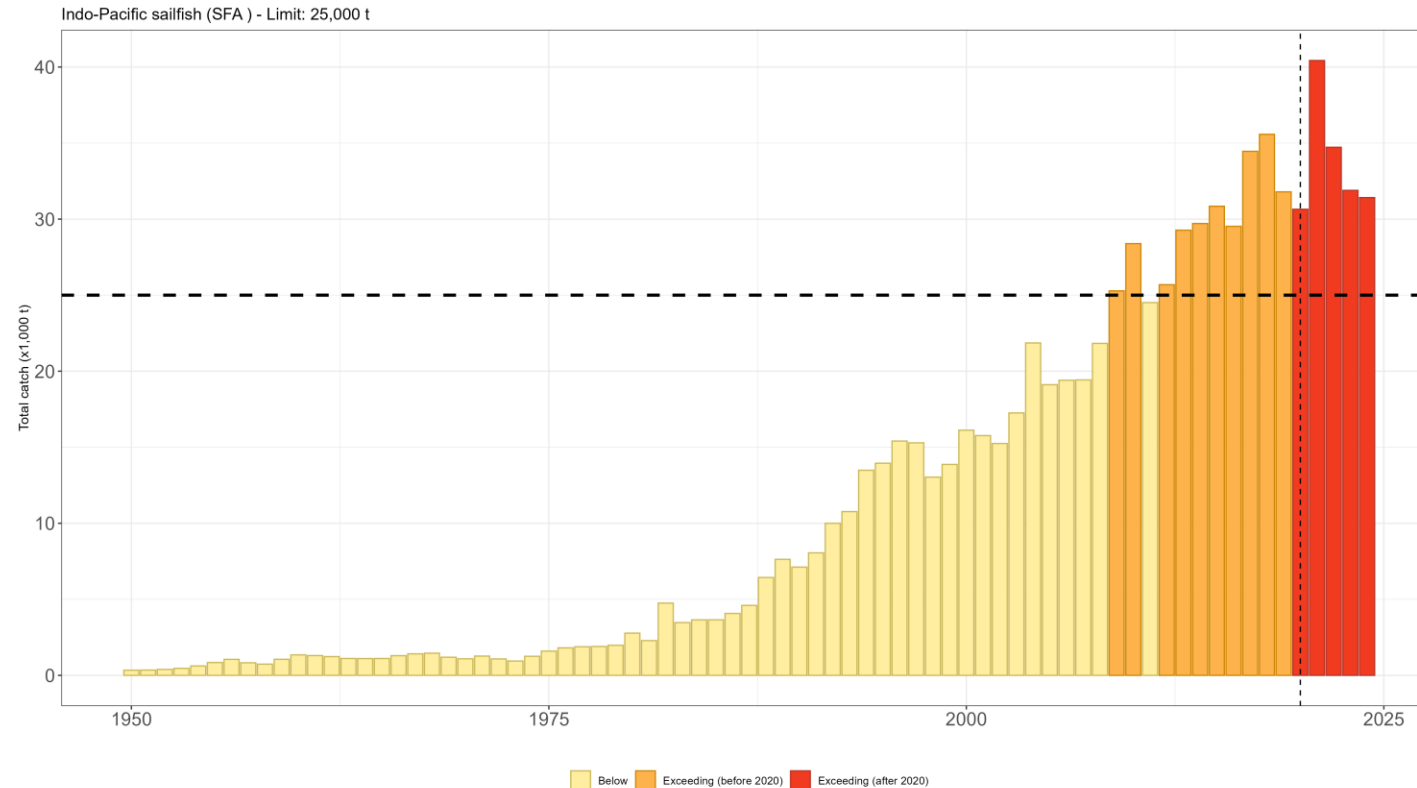


# CATCH STATUS IN COMPARISON TO THE ESTABLISHED CATCH LIMITS - MLS



striped marlin catch limit: 3,260 t

# CATCH STATUS IN COMPARISON TO THE ESTABLISHED CATCH LIMITS - SFA



Indo-Pacific sailfish catch limit: 25,000 t