



**Food and Agriculture  
Organization of the  
United Nations**



**Indian Ocean Tuna Commission  
Commission des Thons de l'Océan Indien**

**28th Working Party on Tropical Tunas (WPTT28)  
20-24 October 2026  
&  
17th Working Party on Methods (WPM17)  
26-27 October 2026**



**S/C DE TENERIFE, CANARY ISLANDS, SPAIN**  
Hosted by



# IOTC 28th WPTT & 17th WPM

## 1. Meeting dates and venue

The WPTT28 will be held from the 20-24 October 2026, from 09:00 to 17:00 daily.  
The WPM17 will be held from the 26-27 October 2026, from 09:00 to 17:00 daily.

### 28TH WORKING PARTY ON TROPICAL TUNAS (WPTT28)

Meeting: Working Party on Tropical Tunas (WPTT)  
Meeting year: 2026  
Meeting session: 28  
Date: Tue, 20/10/2026 - 09:00 to Sat, 24/10/2026 - 17:00  
Venue country/city: Tenerife, Spain  
Location: TBD  
Chairperson: Dr David Kaplan  
Vice-Chairperson: Dr Mohamed Shimal  
Deadlines:

- Meeting Participation Fund applications due 45 days before meeting starts (5 September 2026)
  - Paper titles are due 30 days before the meeting starts (20 September 2026)
  - Full papers are due 15 days before the meeting starts (5 October 2026)
- (all submissions should be sent to IOTC-secretariat@fao.org)

### PLEASE REGISTER FOR THIS MEETING

Title:

First name:  Last name:

Organization:  E-mail:

Registration type:

I'm not a robot

Register

### 17TH WORKING PARTY ON METHODS (WPM17)

Meeting: Working Party on Methods (WPM)  
Meeting year: 2026  
Meeting session: 17  
Date: Mon, 26/10/2026 - 09:00 to Tue, 27/10/2026 - 17:00  
Venue country/city: Tenerife, Spain  
Location: TBD  
Chairperson: Dr Ann Preece  
Vice-Chairperson: Dr Giancarlo Correa  
Deadlines:

- Meeting Participation Fund applications due 45 days before meeting starts (11 September 2026)
- Paper titles are due 30 days before the meeting starts (26 September 2026)
- Full papers are due 15 days before the meeting starts (11 October 2026)

### PLEASE REGISTER FOR THIS MEETING

Title:

First name:  Last name:

Organization:  E-mail:

Registration type:

I'm not a robot

Register

In IEO-CSIC Building - Calle Farola del Mar, 22 - Dársena Pesquera - 38180, Santa Cruz de Tenerife

## 2. Contacts

The contact at the IOTC Secretariat is:  
Administration - Mirose Govinden:  
Administration - Claudette Matombe:

IOTC-Secretariat@fao.org  
Mirose.Govinden@fao.org  
Claudette.Matombe@fao.org



Contact email for the venue in Tenerife:

[MLOURDES.RAMOS@IEO.CSIC.ES](mailto:MLOURDES.RAMOS@IEO.CSIC.ES)

Webs IEO

[WWW.IEO.ES](http://WWW.IEO.ES) & [HTTPS://COC.IEO.CSIC.ES/](https://COC.IEO.CSIC.ES/)

Contact Telephone in Tenerife:

+34 922 23 77 68





### 3. Arrival and entry formalities

#### ENTRY INTO SPAIN (SHORT STAYS)

Who can enter?

- Non-EU travellers
- Stay: max. 90 days in any 180-day period
- Purpose: tourism, business, study, visits, non-paid activities

#### BASIC REQUIREMENTS

Valid passport

Visa (if required)

Proof of stay (hotel, invitation, etc.)

Sufficient funds

No entry ban

#### DOCUMENTS AT BORDER

Passport

- Valid ≥ 3 months after departure
- Issued within last 10 years

Travel proof

- Return or onward ticket

Accommodation

- Hotel booking OR invitation letter

Purpose of trip

- Business: invitation / event access
- Study: admission/enrolment
- Other: relevant documentation

#### FINANCIAL REQUIREMENTS (2026)

€122 / day per person

Minimum: €1,099 per stay

Accepted proof:

- Cash
- Credit card + statement
- Bank documents

#### ENTRY DECISION

Entry allowed if all requirements are met

Entry denied if:

- Requirements not fulfilled
- Stay limit exceeded (90/180 rule)
- Entry ban applies

#### EU / EEA / SWITZERLAND

- Entry with ID card or passport
- Family members may need a visa (depending on nationality)

#### VISA-EXEMPT COUNTRIES

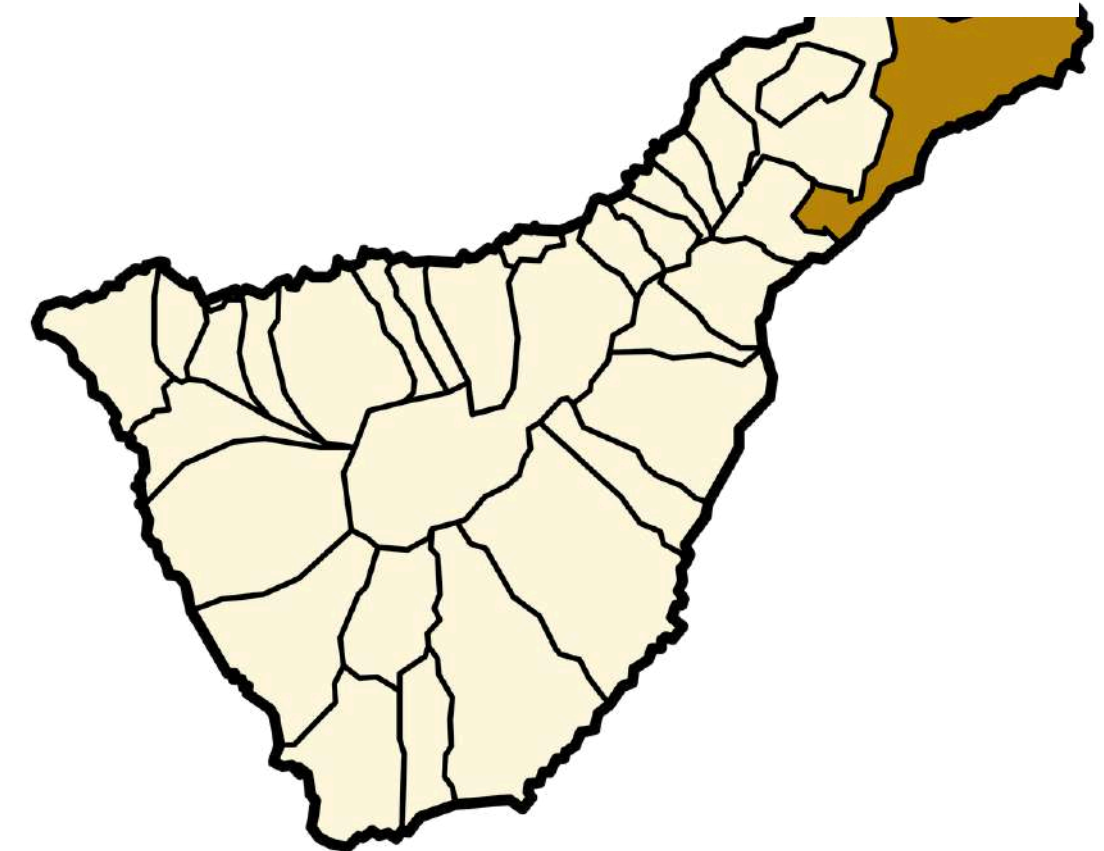
- No visa required for short stays
- Still must meet all entry conditions

#### ETIAS (COMING SOON)

- Expected: end of 2026
- Required for visa-exempt travellers

#### COVID-19

- No health restrictions currently





## 4. Health precautions

### Healthcare System

High-quality public healthcare system in Spain  
Modern hospitals and well-equipped clinics across Tenerife

### EU / EEA Travellers

Access healthcare with the European Health Insurance Card (EHIC)  
Covers medically necessary treatment during your stay

### Non-EU Travellers

Travel health insurance strongly recommended  
Private clinics widely available

### Pharmacies



“Farmacia” = pharmacy

Identified by a green cross sign

Many open long hours; some are 24h on rotation

### Emergencies

112 (free, multilingual, 24/7)

Covers ambulance, police, and fire services

### Practical Tips

Bring prescriptions for regular medication  
Pharmacies can provide advice for minor issues  
Both public and private care are reliable and accessible

### Current Situation

- No COVID-19 entry requirements
- No mandatory vaccinations
- No tropical disease risk

Subtropical climate (warm all year)

UV radiation is very strong, even in winter

Use high SPF sunscreen (50+)

Wear hat & sunglasses

Avoid sun exposure at midday (12:00–16:00)

Stay well hydrated





## 5. Recommended Accommodation

It is recommended to stay at in the main city, Santa Cruz, near the bus stops of the main bus lines connecting to the IEO-CSIC building:

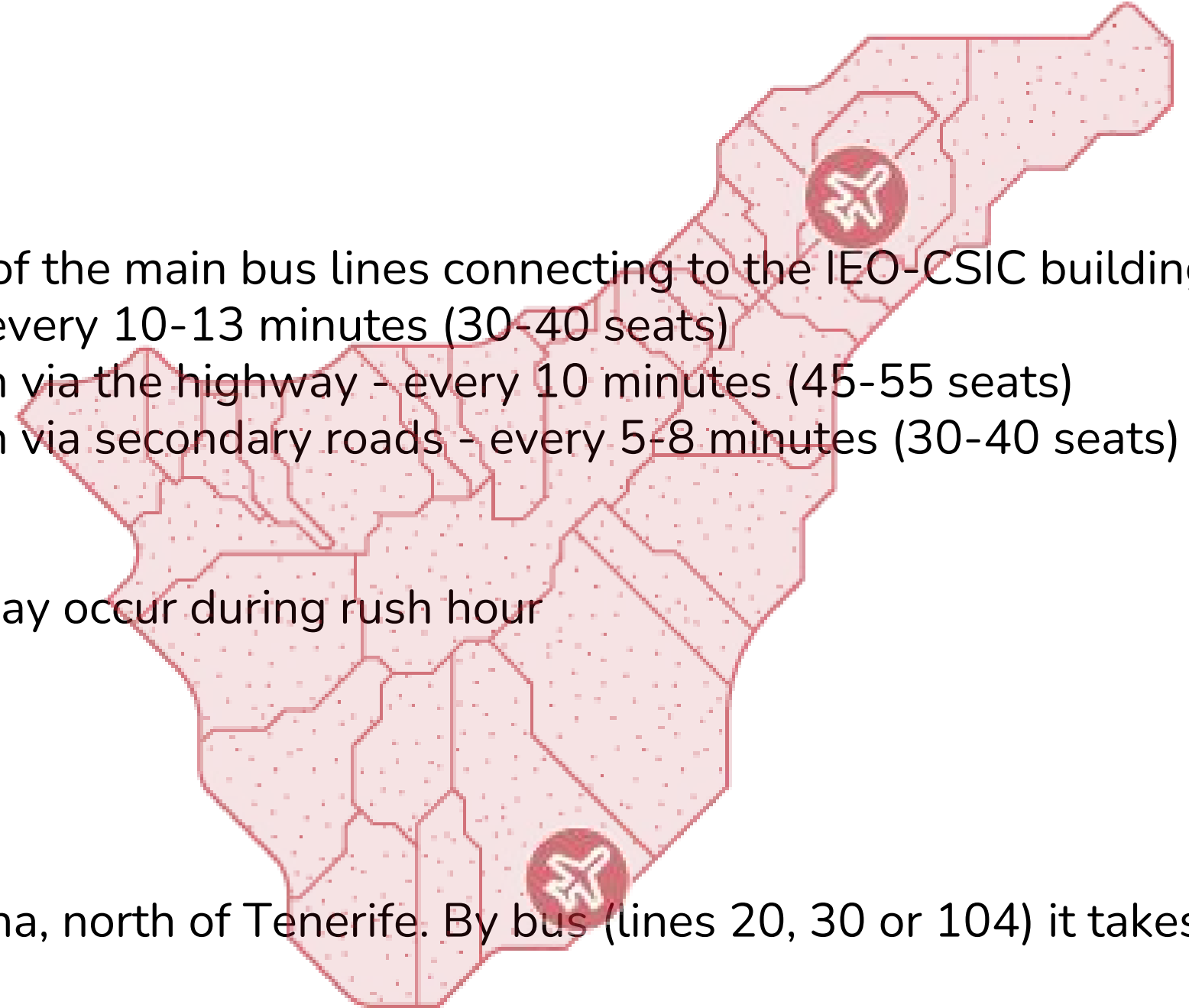
- Bus line 910 (20'): From Santa Cruz Bus Station to IEO-CSIC Bus Stop - every 10-13 minutes (30-40 seats)
- Bus line 015 (15'): From La Laguna Bus Station to Santa Cruz Bus Station via the highway - every 10 minutes (45-55 seats)
- Bus line 014 (40'): From La Laguna Bus Station to Santa Cruz Bus Station via secondary roads - every 5-8 minutes (30-40 seats)
- Metro from La Laguna to Santa Cruz (40') - every 6-8 minutes

La Laguna and Santa Cruz form a metropolitan area, and traffic congestion may occur during rush hour

## 6. Transportation

- There are two airports in the island. One is TFN, in Los Rodeos - La Laguna, north of Tenerife. By bus (lines 20, 30 or 104) it takes 5' long to reach La Laguna Bus Station
- The other is TFS, in Tenerife South. By bus (line 10) it takes 60' to reach Santa Cruz Bus Station

See next sections C to F below for transportation details





Food and Agriculture  
Organization of the  
United Nations



Indian Ocean Tuna Commission  
Commission des Thons de l'Océan Indien

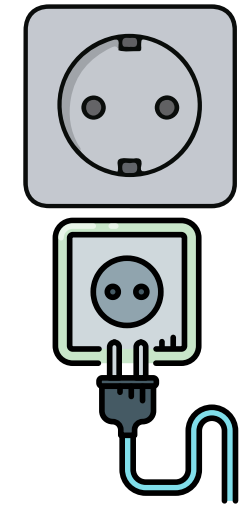


## 7. Dress code

The dress code for the meeting is Smart Casual

## 8. Electricity

Electricity in Spain is 220–240 volts, with a utility frequency of 50 Hz, and type C and F sockets are used



## 9. Telephone service and WiFi

Wi-Fi will be available in the conference area. Internet service outside the conference will be at participants' own expense

The international dialing code for the Canary Islands (Spain) is +34. There are several mobile network operators in Spain, including Movistar, Vodafone Spain and Orange Spain, all of which provide SIM cards and prepaid services. SIM cards are available at official stores, shopping centres, and kiosks, including some locations at the airport or in major cities such as Santa Cruz de Tenerife



Food and Agriculture  
Organization of the  
United Nations



Indian Ocean Tuna Commission  
Commission des Thons de l'Océan Indien

## 10. Currency

Spain's currency is the euro (EUR) – currency can be exchanged at banks, exchange offices, or at the airport, and ATMs are widely available throughout the island, including in areas such as Santa Cruz de Tenerife

## 11. Food Options

Lunch and coffee breaks will be provided at the meeting venue. If you have any dietary requirements or preferences, please contact the organizers in advance

If delegates wish to dine outside the venue, there are numerous restaurants offering a wide variety of local and international cuisine, particularly in areas such as Santa Cruz de Tenerife. See section G below for more details

## 12. Weather

The weather in Tenerife is mild and pleasant throughout the year, with average temperatures ranging from 20°C to 28°C

The island has a subtropical climate, generally characterized by dry, sunny conditions. However, occasional rain may occur, particularly during the winter months

It is advisable to bring:

- Light clothing for warm weather
- A light jacket for evenings or air-conditioned spaces
- Sun protection (hat, sunglasses, sunscreen)





Food and Agriculture  
Organization of the  
United Nations



Indian Ocean Tuna Commission  
Commission des Thons de l'Océan Indien

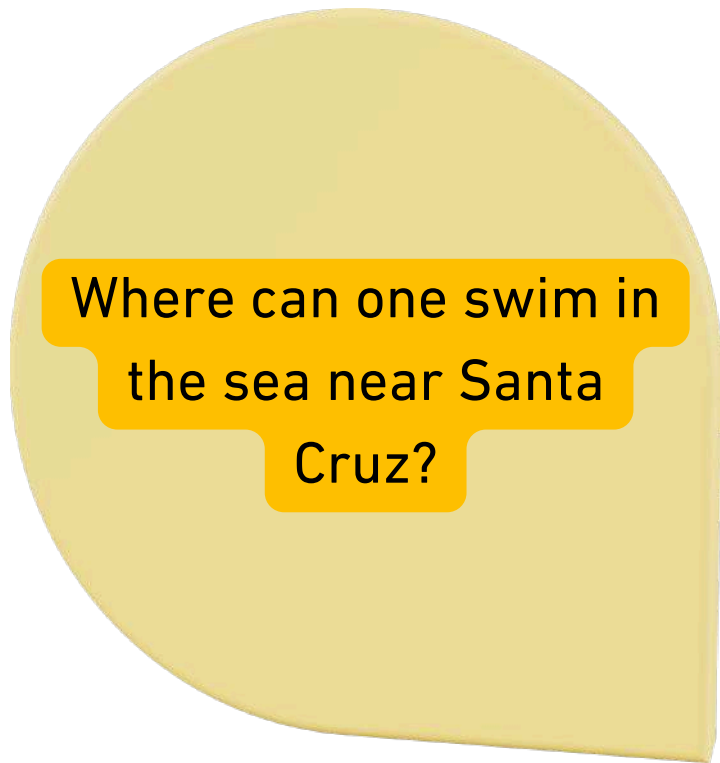
### 13. Tourism, Climate and Additional information

Santa Cruz de Tenerife, a vibrant coastal city of around 210,000 residents, is located on the island of Tenerife, in the Canary Islands (Spain). Situated along the Atlantic coast, the city combines urban life with natural surroundings, including nearby beaches such as Las Teresitas and the Anaga Biosphere Reserve, known for its rich biodiversity and unique landscapes.

As the capital of the island and one of the main administrative centres of the Canary Islands, Santa Cruz offers a wide range of services, cultural activities, and infrastructure. The city is also well connected to San Cristóbal de La Laguna, a historic university town located just 10 km away.

Visit the official tourism website for more information about Santa Cruz and its surroundings:

[Discover Santa Cruz \(official tourism service\)](#)



Tenerife (Cabildo de Tenerife)  
[Visit Tenerife – Official Tourism Website](#)



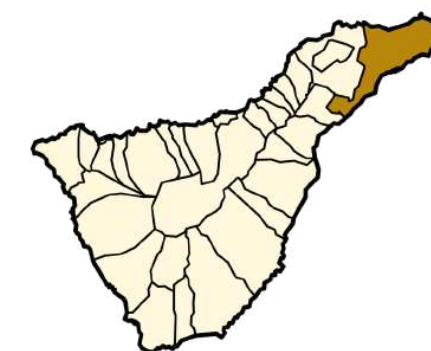


**A** Meeting building: IEO-CSIC

**B** Meeting room: Floor 0

**C** Coming by bus: Line 910 (20' max.)

**D** Walking from the Bus Stop to the  
IEO-CSIC (5' min.)



**E** Recommended Hotels

**F** If you stay further away... **Additional**

Bus or Metro Lines and

Recommended Hotels

**G** Some turistic information

**H** By bike



# INSTITUTO ESPAÑOL DE OCEANOGRAFÍA - CENTRO OCEANOGRÁFICO DE CANARIAS

CALLE FAROLA DEL MAR, 22 - DÁRSENA PESQUERA  
38180 - SANTA CRUZ DE TENERIFE - SPAIN

## CANARIAS

## CSIC

TELEPHONE: +34 922 54 94 00

Where is the IEO-CSIC building?

Where is the entrance?

**01** Traffic signs (deviation 1)



**02** Traffic signs (or deviation 2)



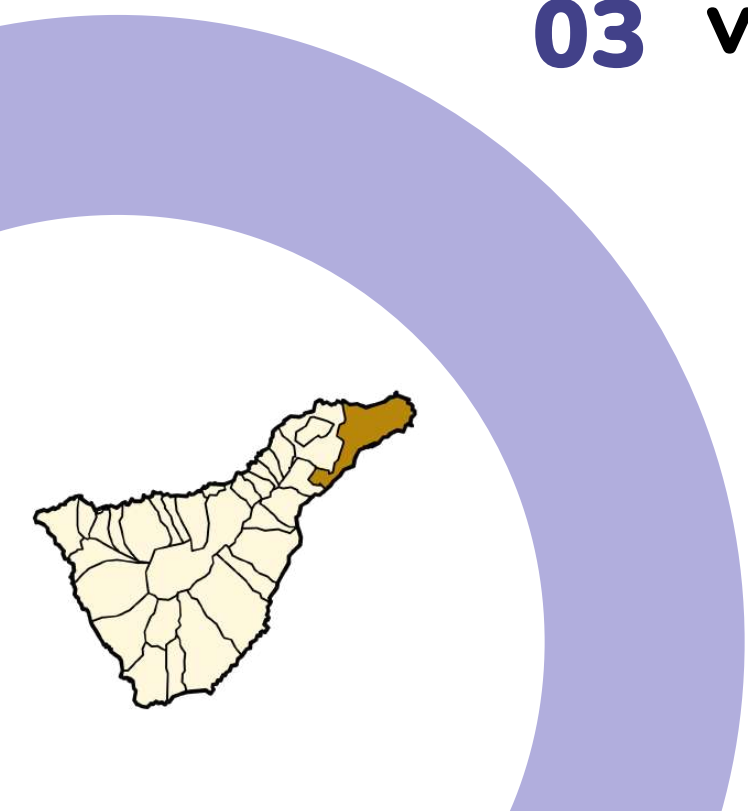
**03** View from the main road

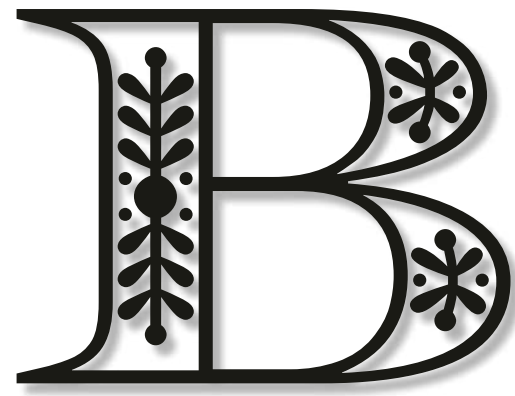


**04** Closer view



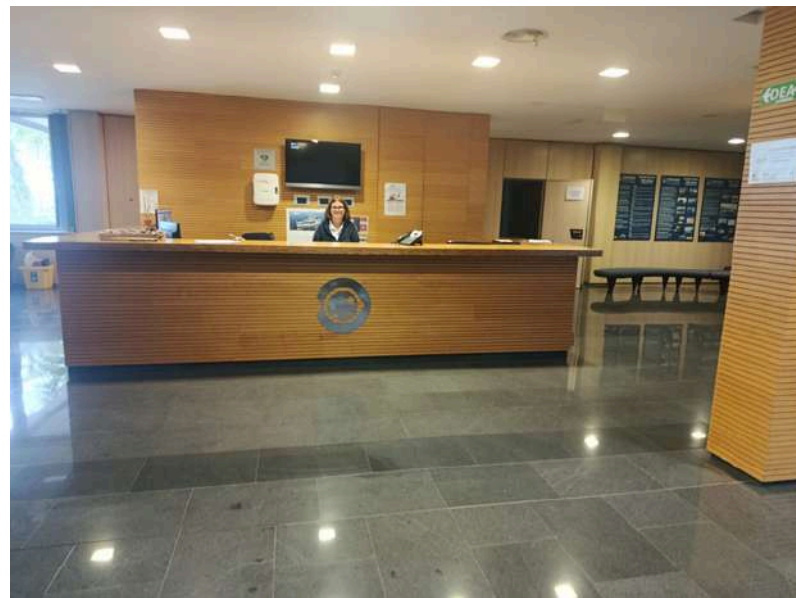
**05** Main entrance



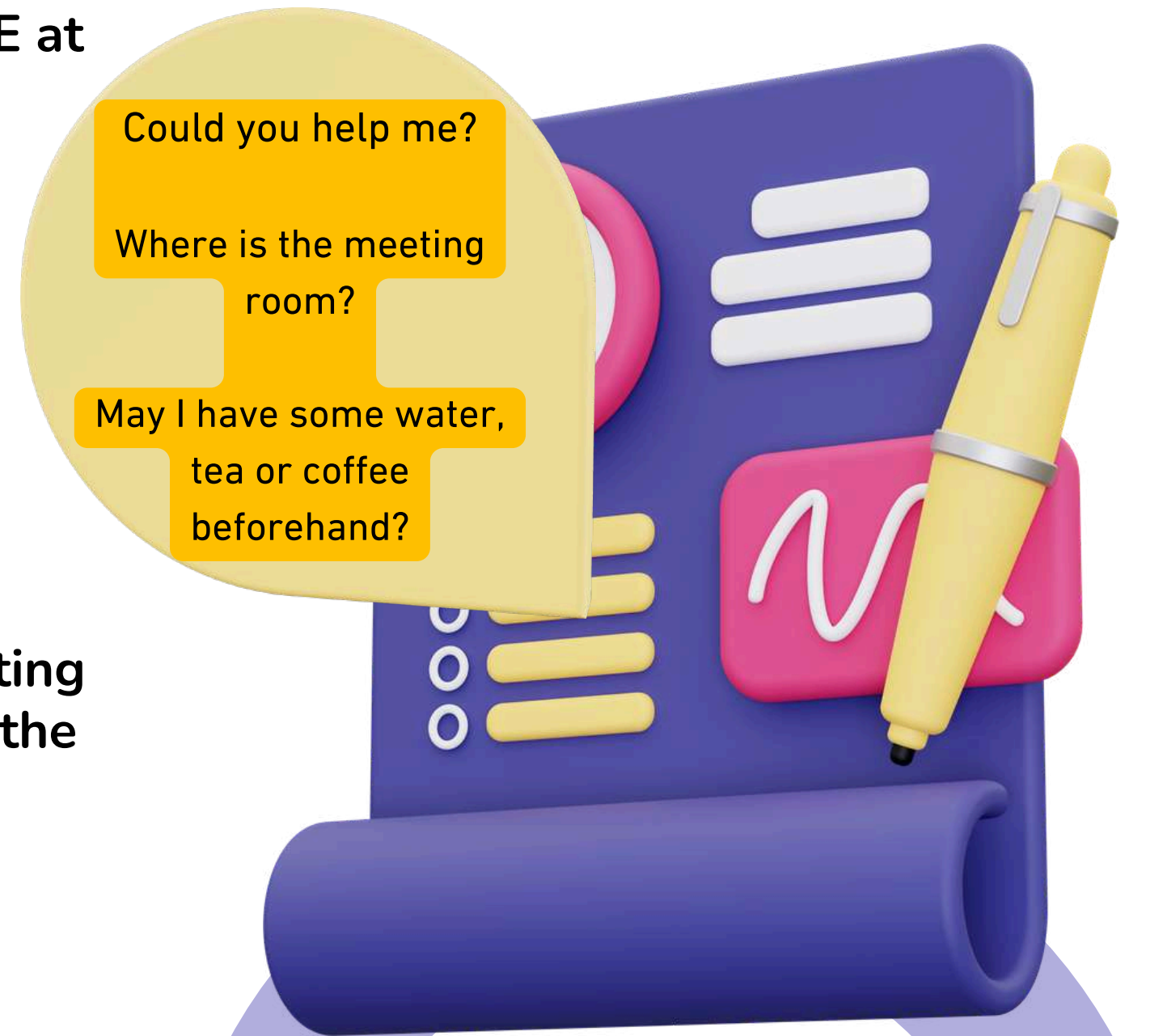
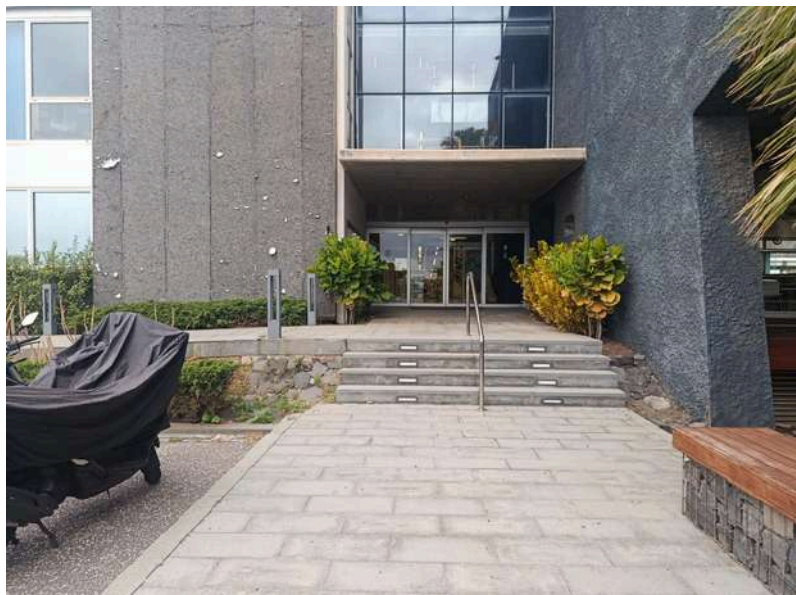


# WELCOME: VENUE, REGISTRATION AND FACILITIES

Please, pick up your **BADGE** at the registration desk



The **ENTRANCE** to the meeting room is located just behind the registration desk



Prior to the session, water, tea, and coffee will be available at the on-site cafeteria



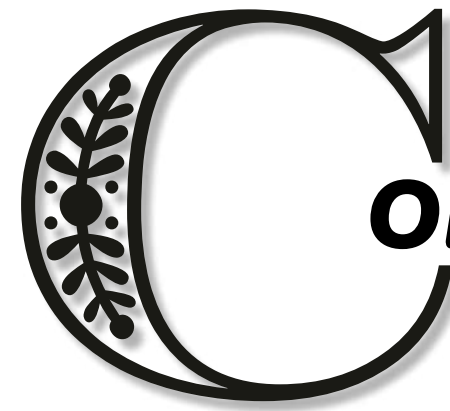
How do I reach the IEO-  
CSIC by bus?

Could I buy the tickets  
in advance?

May I pay by cash or  
card at the bus?



You can buy your  
bus card in  
advance, or pay  
on the bus by  
cash or credit  
card

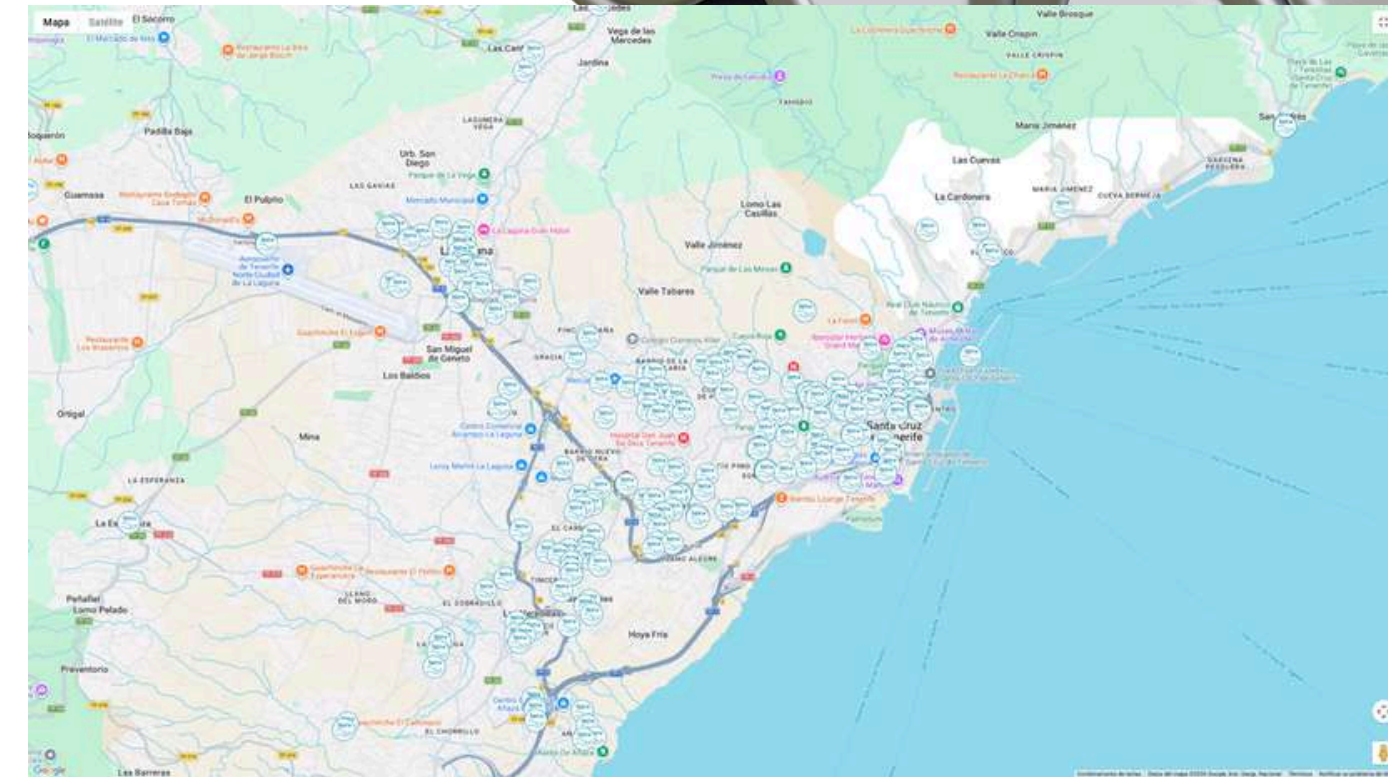
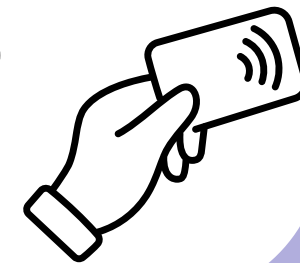


## COMING BY BUS - LINE 910



And  
/Or

You can also  
download the  
public transport  
App



Which are the bus timetables?



### Bus Public Transport from Santa Cruz to IEO-CSIC

Mapa Satélite

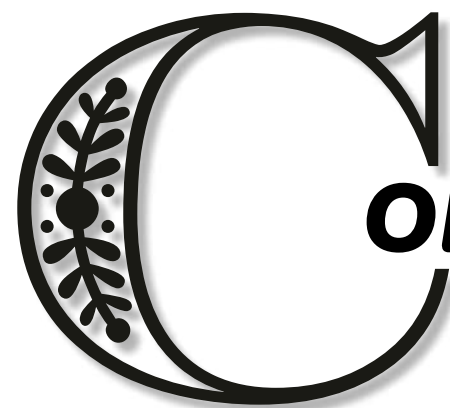
Bus Line Number **910**

**20 minutes**

TODOS LOS DÍAS

SALIDAS DESDE Intercambiador		SALIDAS DESDE Playa Teresitas	
5:45		16:07	20:00 (1)
6:00		16:20	20:11 (1)
6:10		16:33	20:22 (1)
6:20		16:46	20:32 (1)
6:30		17:00	20:44 (1)
6:39		17:14	20:56 (1)
6:47		17:28	21:08 (1)
6:55		17:43	21:20 (1)
7:05		17:58	21:35 (1)
7:15		18:10	21:45 (1)
7:25		18:22	22:10 (1)
7:35		18:34	22:45 (1)
7:44		18:46	23:10 (1)
7:53		18:56	23:35 (1)
8:02		19:06	
8:12		19:16	
8:23		19:27	
8:36		19:38	
8:49		19:49	
9:02			
9:15			

eldigitalsur.com



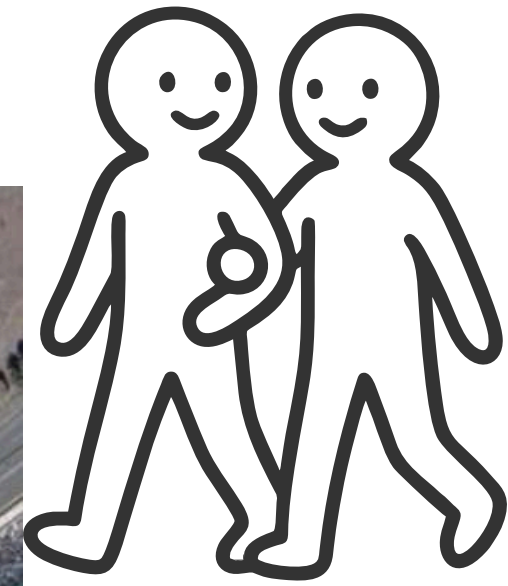
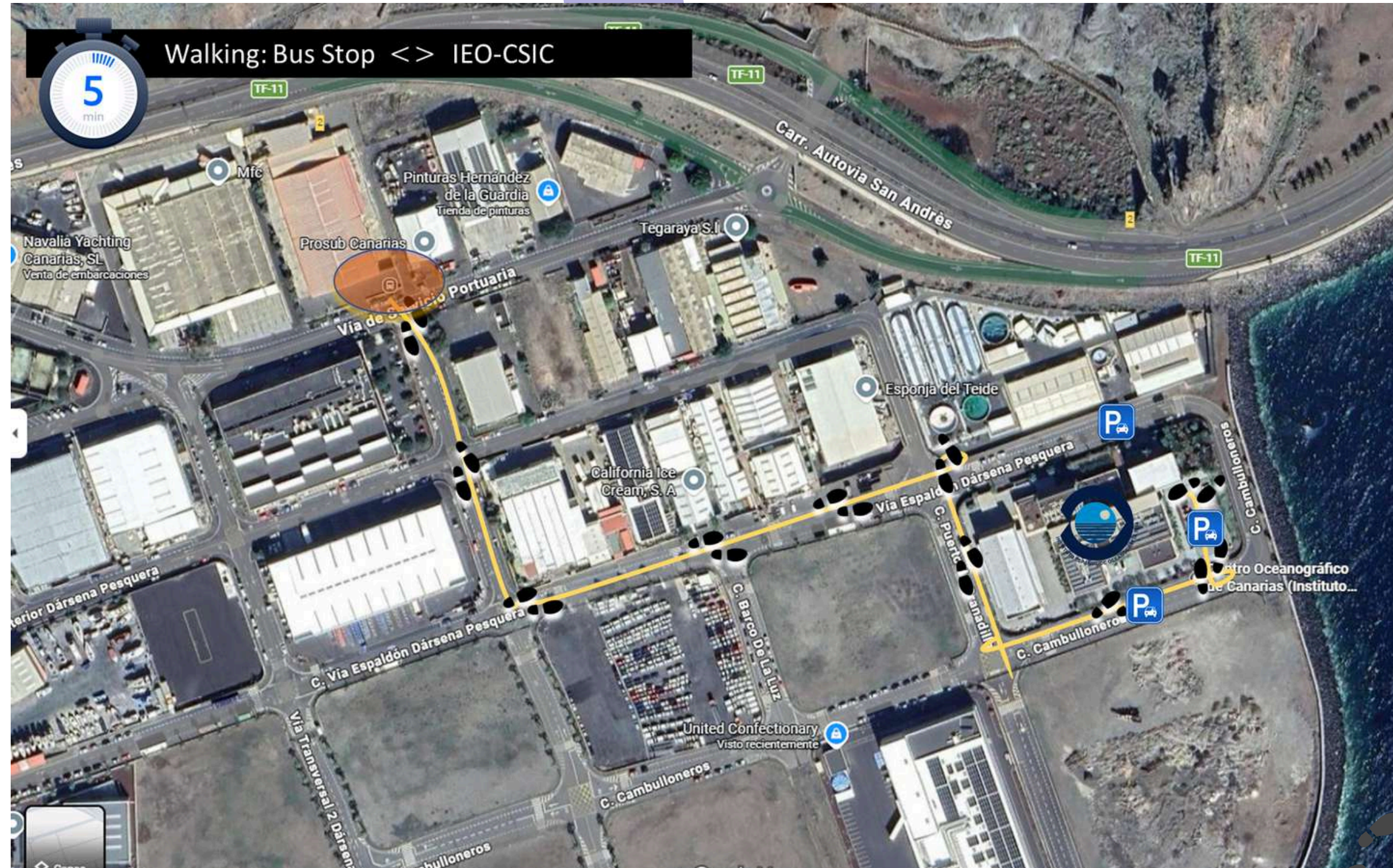
**COMING BY BUS - LINE 910**



How long does it take from the last bus stop to the IEO-CSIC main entrance?



# Walking from de Bus Stop to the IEO-CSIC Entrance



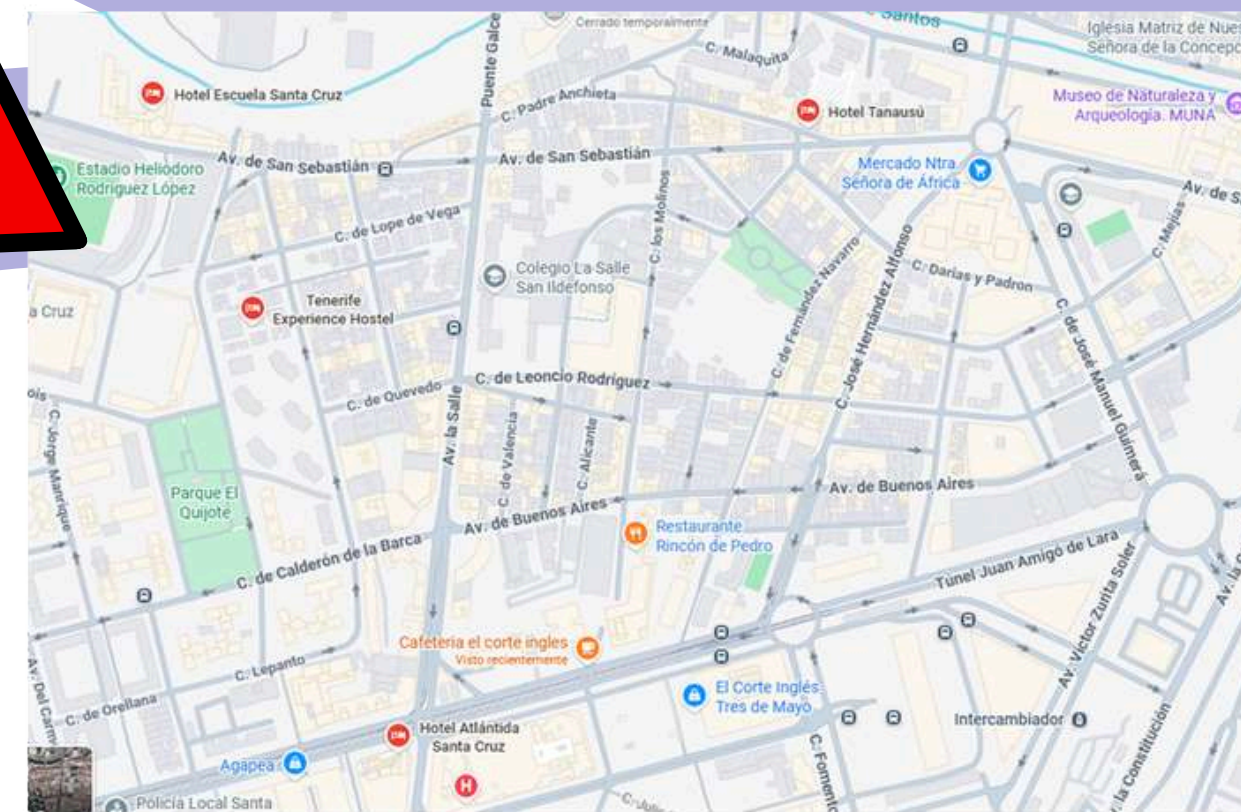
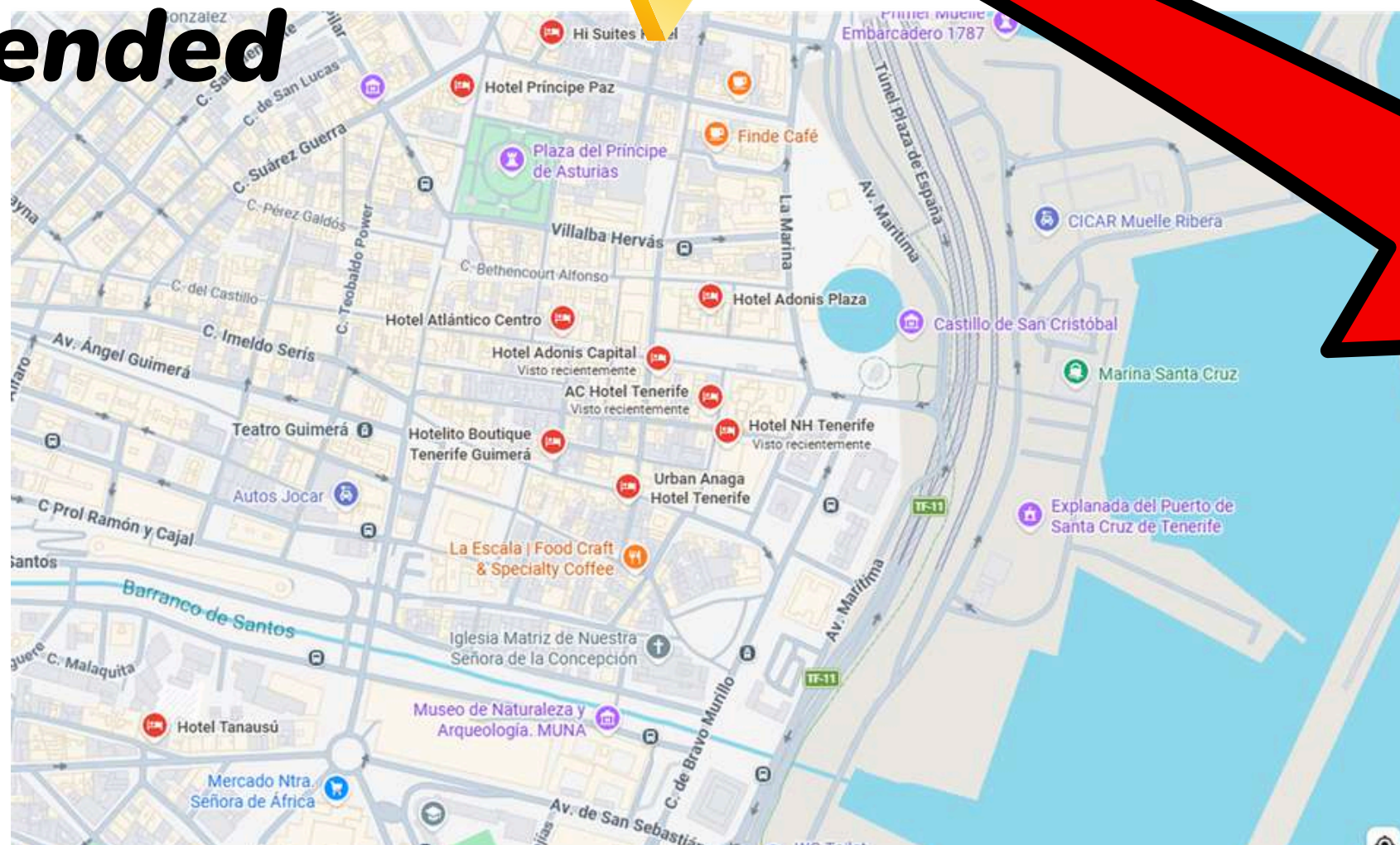
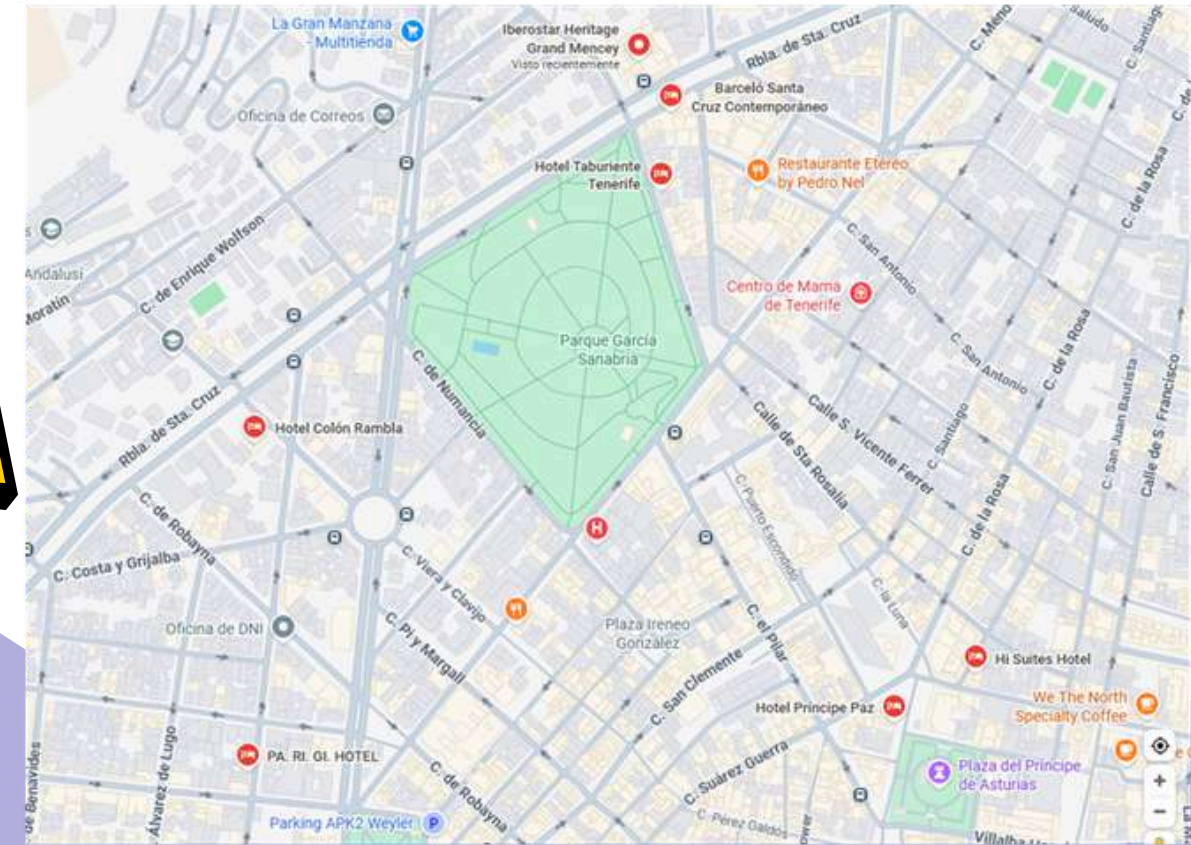
You can follow the yellow line

It is recommended to stay at a hotel near the bus stops of **Bus Line 910** (see **Section C for more details**), in order to reach the IEO building with a single bus. Please note that this Line runs approximately every 10-13 minutes, has around 30-40 seats and Santa Cruz can be busy during the morning rush hour.

Which hotels do you recommend in Santa Cruz?



## Recommended Hotels



# List of Recommended Hotels, ordered by proximity and best transport connections to the IEO-CSIC building:



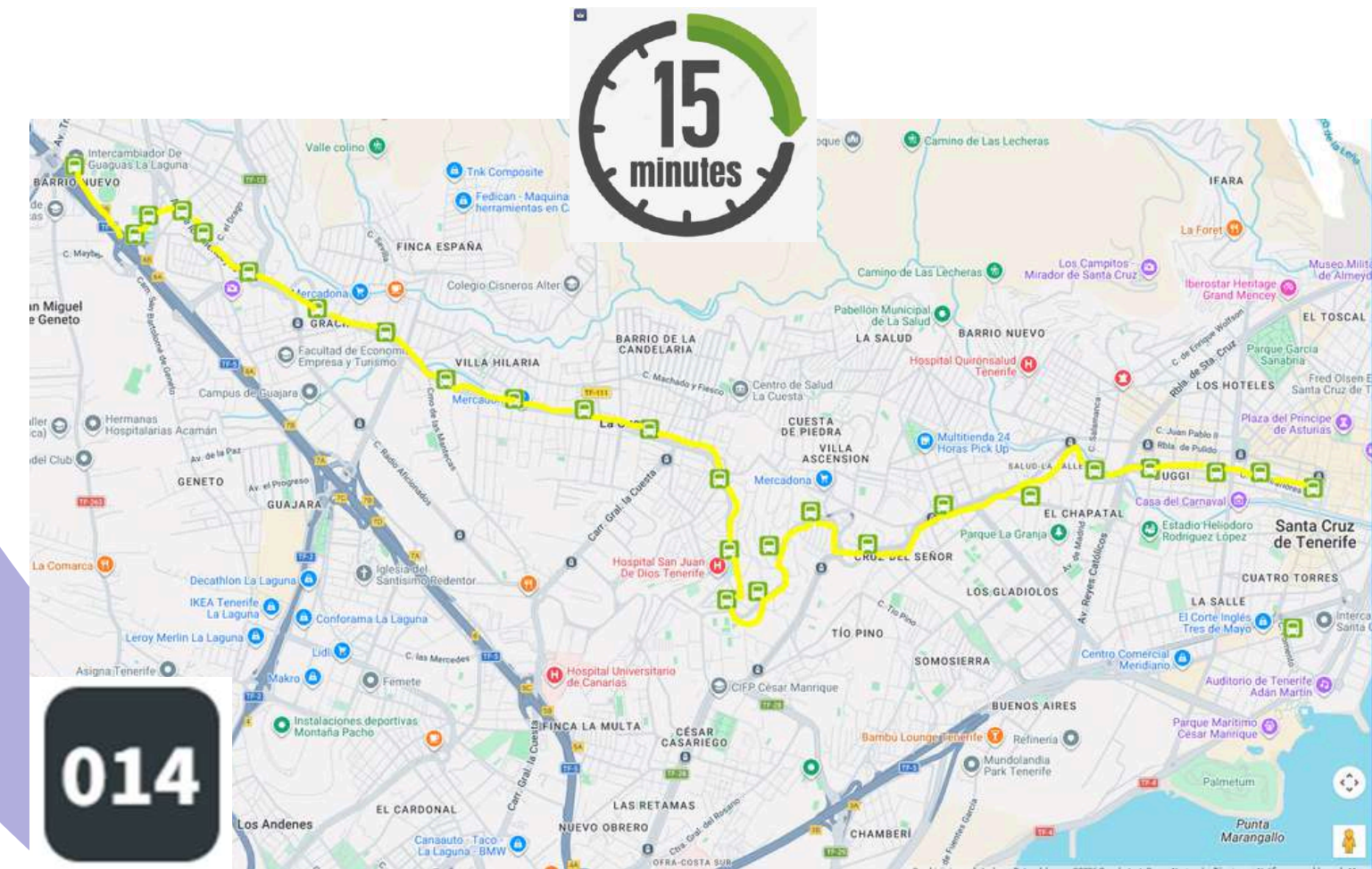
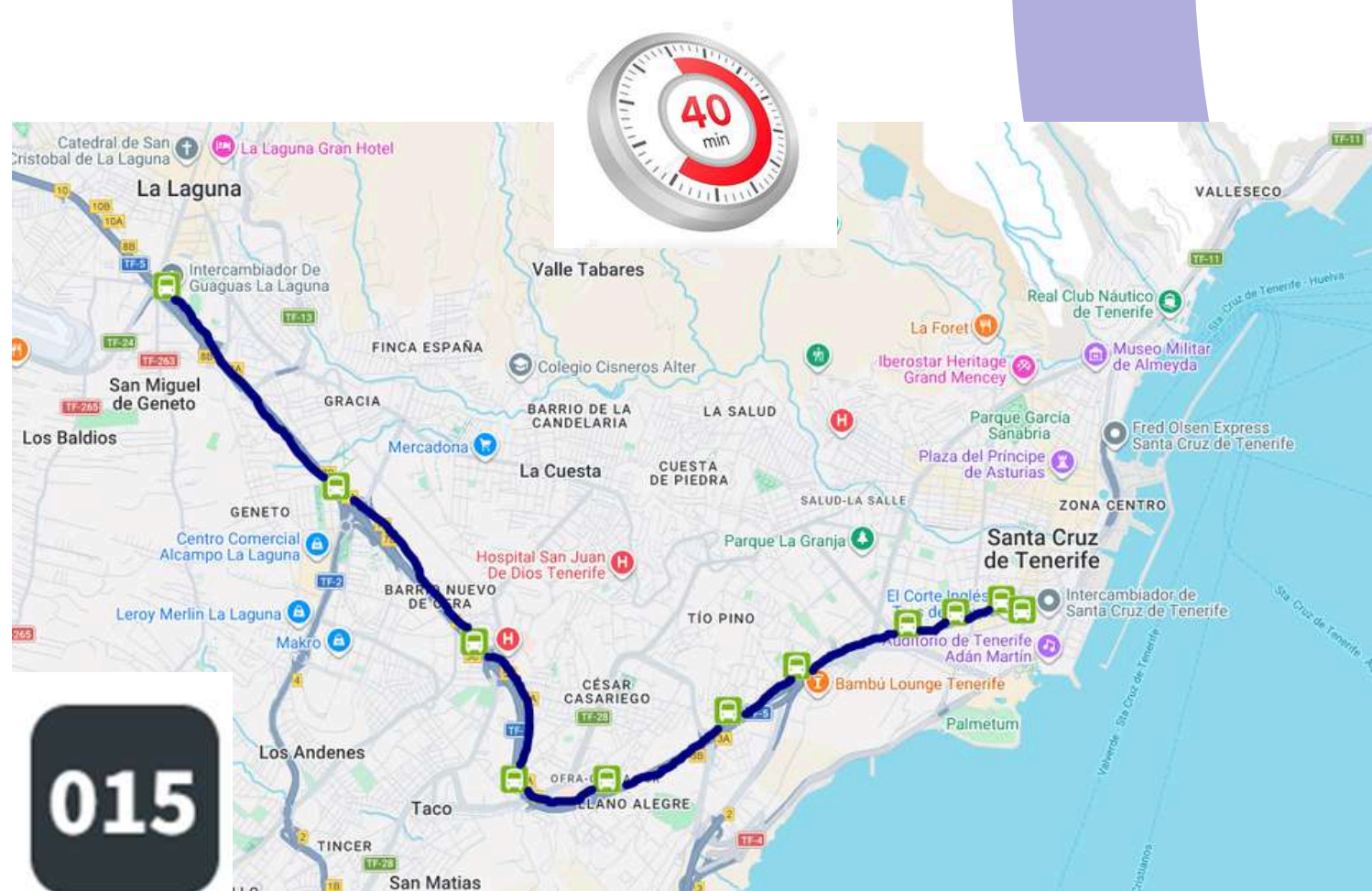
## Recommended Hotels

Hotel	Category	Phone	Email	Website
Hotel Escuela Santa Cruz	★★★★	+34 922 847 500	<a href="mailto:recepcion.hesc@hecansa.com">recepcion.hesc@hecansa.com</a>	<a href="https://www.hotelescuelsantacruz.com">https://www.hotelescuelsantacruz.com</a>
Hotel Colón Rambla	★★★★	+34 922 272 550	<a href="mailto:reservas@hotelcolonrambla.com">reservas@hotelcolonrambla.com</a>	<a href="https://www.hotelcolonrambla.com">https://www.hotelcolonrambla.com</a>
Taburiente Tenerife	★★★★	+34 922 276 000	<a href="mailto:info@hoteltaburiente.com">info@hoteltaburiente.com</a>	<a href="https://www.hoteltaburiente.com">https://www.hoteltaburiente.com</a>
Iberostar Heritage Grand Mencey	★★★★★	+34 922 609 900	<a href="mailto:mencey@iberostar.com">mencey@iberostar.com</a>	<a href="https://www.iberostar.com">https://www.iberostar.com</a>
Barceló Santa Cruz Contemporáneo	★★★★	+34 922 271 571	<a href="mailto:santacruzcontemporaneo@barcelo.com">santacruzcontemporaneo@barcelo.com</a>	<a href="https://www.barcelo.com">https://www.barcelo.com</a>
NH Tenerife	★★★	+34 922 534 422	<a href="mailto:nhcollectiontenerife@nh-hotels.com">nhcollectiontenerife@nh-hotels.com</a>	<a href="https://www.nh-hotels.com">https://www.nh-hotels.com</a>
AC Hotel Tenerife	★★★★	+34 822 680 581	<a href="mailto:ac.tenerife@acmarriott.com">ac.tenerife@acmarriott.com</a>	<a href="https://www.marriott.com">https://www.marriott.com</a>
Hotel Príncipe Paz	★★★	+34 922 249 955	<a href="mailto:reservas@hotelprincipepaz.com">reservas@hotelprincipepaz.com</a>	<a href="https://www.hotelprincipepaz.com">https://www.hotelprincipepaz.com</a>
S/C Urban Anaga Hotel	★★★★	+34 922 474 600	<a href="mailto:info@urbananaga.com">info@urbananaga.com</a>	<a href="https://www.urbananaga.com">https://www.urbananaga.com</a>
Boutique Hotel Tenerife Guimerá	★★★	+34 822 043 330	<a href="mailto:info@tenerifeguimera.com">info@tenerifeguimera.com</a>	<a href="https://www.tenerifeguimera.com">https://www.tenerifeguimera.com</a>
Hotel Adonis Plaza	★★★	+34 922 272 453	<a href="mailto:hotelplaza@adonisresorts.com">hotelplaza@adonisresorts.com</a>	<a href="https://www.adonisresorts.com">https://www.adonisresorts.com</a>
Hotel Adonis Capital	★★★	+34 922 284 848	<a href="mailto:capital@adonisresorts.com">capital@adonisresorts.com</a>	<a href="https://www.adonisresorts.com">https://www.adonisresorts.com</a>
HI Suites Hotel	★★★	+34 822 904 030	<a href="mailto:info@hisuiteshotel.com">info@hisuiteshotel.com</a>	<a href="https://www.hisuiteshotel.com">https://www.hisuiteshotel.com</a>
Hotel Tanausú	★★★	+34 922 217 000	<a href="mailto:info@hoteltanausu.es">info@hoteltanausu.es</a>	<a href="https://www.hoteltanausu.es">https://www.hoteltanausu.es</a>
Hotel Atlántico Centro	★★	+34 922 246 375	<a href="mailto:info@hotelatlantico.com">info@hotelatlantico.com</a>	<a href="https://www.hotelatlantico.com">https://www.hotelatlantico.com</a>
Hotel Náutico	★★	+34 922 247 066	<a href="mailto:nautico@a-caledonia.com">nautico@a-caledonia.com</a>	<a href="https://www.hotelnautico.es">https://www.hotelnautico.es</a>
Hotel Pensión París (Pa Ri Gi)	★★	+34 922 246 919	(contact via website)	<a href="https://www.hotelparis.es">https://www.hotelparis.es</a>
Tenerife Experience Hostel	★★	+34 822 171 607	<a href="mailto:info@tenerifeexperiencehostel.com">info@tenerifeexperiencehostel.com</a>	<a href="https://www.tenerifeexperiencehostel.com">https://www.tenerifeexperiencehostel.com</a>

I would like to stay further away. Are there transportation options and hotels available?



**If you stay further away...  
Additional Bus or Metro Lines**



All: every 5-13 minutes

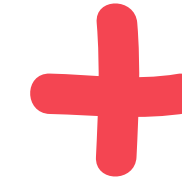


<https://www.titsa.com/index.php/en/>

I would like to stay further away. Are there transportation options and hotels available?



**If you stay further away...  
Additional Bus or Metro Lines**



Plus 20' more by Bus Line 910

Departures from La Laguna Bus Station to Santa Cruz Bus Station

- 
- 5:20
- 6:05
- 6:15
- 6:30
- 6:50
- 7:00
- 7:10
- 7:20
- 7:25
- 7:30
- 7:40
- 7:50
- 8:00
- 8:05
- 8:10
- 8:20
- 8:30
- 8:40
- 8:50
- 9:00
- 9:05
- 9:10

### Bus Stops

**015** Cambiar el sentido

**TRAYECTO DESDE:**  
**INTERCAMBIADOR LAGUNA**

- ↓ 2625 INTERCAMBIADOR LAGUNA
- 1370 IES LA LABORAL
- 2393 CAMPUS DE GUAJARA (T)
- 1372 SANTIAGO MARTÍN
- 1373 HOSPITAL UNIVERSITARIO
- 1374 NUEVO OBRERO
- 1375 HOSPITAL LA CANDELARIA
- 2521 FRAY LUIS DE GRANADA
- 9413 MERIDIANO
- 9449 INTERCAMBIADOR STA. CRUZ

Departures from La Laguna Bus Station to Santa Cruz Bus Station

SALIDAS LA LAGUNA	PASOS POR LA CUESTA
→	→
6:00	6:10
6:10	6:20
6:20	6:30
6:28	6:38
6:35	6:45
6:40	6:50
6:45	6:55
6:50	7:00
6:55	7:05
7:02	7:14
7:10	7:22
7:17	7:29
7:25	7:37
7:30	7:42
7:35	7:47
7:40	7:52
7:48	8:00
7:54	8:06
8:00	8:12
8:08	8:20
8:14	8:26
8:20	8:32
8:28	8:40
8:35	8:47
8:43	8:55
8:50	9:02
8:57	9:09
9:04	9:16

### Bus Stops

**014** Cambiar el sentido

**TRAYECTO DESDE:**  
**INTERCAMBIADOR LAGUNA**

- ↓ 2625 INTERCAMBIADOR LAGUNA
- 1401 LOS MENCEYES
- 1402 MUSEO DE LA CIENCIA
- 1403 MENCEY BENCOMO
- 1404 CHORRO DE GRACIA (T)
- 1405 FINCA ESPAÑA
- 1406 EL CHARCÓN
- 1407 LA HIGUERITA
- 1408 TABARES
- 1409 LA CUESTA (T)
- 1410 VISTABELLA (T)
- 9177 SAN JUAN DE DIOS
- 9178 OFRA
- 9289 DOMINICAS
- 9290 VILLA BENÍTEZ
- 9291 VUELTA DE LOS PÁJAROS (T)
- 9292 ÁNGEL ROMERO
- 9293 CRUZ DEL SEÑOR
- 9294 DOCTOR JIMÉNEZ DÍAZ
- 9295 BÉLGICA
- 9296 SAN SEBASTIÁN
- 9213 JOSÉ HERNÁNDEZ ALFONSO
- 9450 INTERCAMBIADOR STA. CRUZ

I would like to stay further away. Are there transportation options and hotels available?



***If you stay further away... Recommended Hotels***

La Laguna city is approximately 10 km from the IEO-CSIC building. Please note that travel time may take up to one hour during rush hour.

Hotel	Category	Area	Phone	Website
La Laguna Gran Hotel	★★★★	La Laguna	+34 922 108 080	<a href="https://lalagunagranhotel.com">https://lalagunagranhotel.com</a>
Hotel Laguna Nivaria	★★★★	La Laguna	+34 922 264 298	<a href="http://www.lagunanivaria.com">http://www.lagunanivaria.com</a>

What can I visit?



[Teide National Park – Official Website \(English\)](https://www.reservasparquesnacionales.es/real/parquesnac/usu/html/detalle-actividad-oapn.aspx?ii=6ENG&cen=2&act=1)

<https://www.reservasparquesnacionales.es/real/parquesnac/usu/html/detalle-actividad-oapn.aspx?ii=6ENG&cen=2&act=1>

## Some turistic information



DATE

From 24 October to 2 November 2026

VENUE

Recinto Ferial de Tenerife

Avenida de la Constitución, 12

Santa Cruz de Tenerife

The event will take place in the Main Hall, with an open exhibition space of 12,000 m<sup>2</sup>.

OPENING HOURS

2 November: 16:00 – 21:00

All other days: 11:00 – 21:00

EXHIBITORS

200 artisans from Europe, Africa, and the Americas

Are there any events in Santa Cruz or nearby those days?

## List of Evening and Night Events in Tenerife (20–27 October)



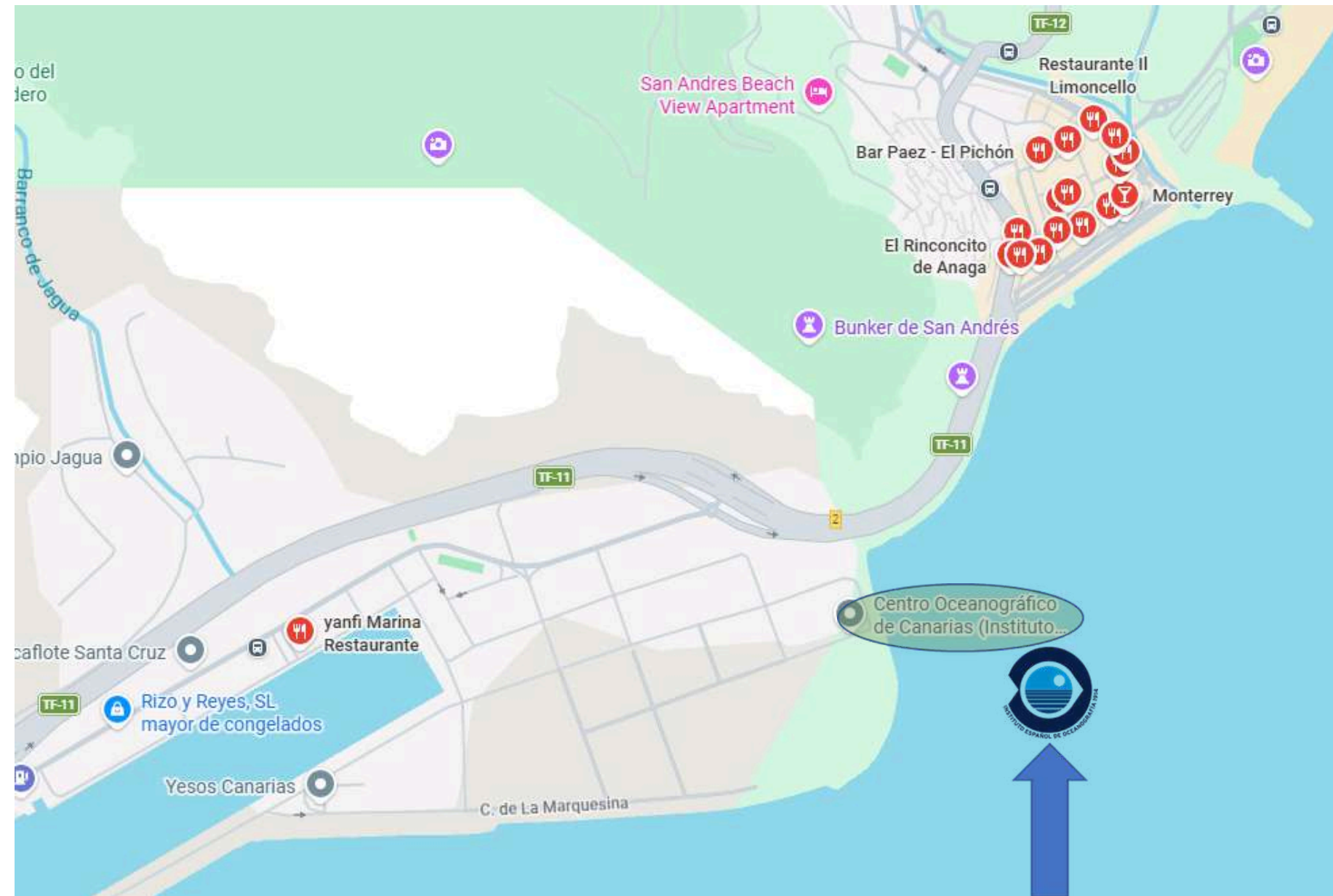
### Some turistic information

Event	City / Location	Dates	Description	Link
<b>Starmus Festival</b>	Santa Cruz / La Laguna / Teide National Park	20–22 Oct	Science & music festival with talks, concerts, and night activities	<a href="https://starmus.com">https://starmus.com</a>
<b>Tenerife Peñón Fest</b>	Santa Cruz de Tenerife (Palmetum)	23–24 Oct	Indie/pop-rock concerts in an outdoor evening setting	<a href="https://tenerifepenonfest.com">https://tenerifepenonfest.com</a>
<b>Auditorio de Tenerife Adán Martín</b> (programme)	Santa Cruz de Tenerife	Various dates	Classical music, opera, and evening performances	<a href="https://www.auditoriodetenerife.com">https://www.auditoriodetenerife.com</a>
<b>Teatro Leal</b> (programme)	San Cristóbal de La Laguna	Various dates	Theatre and cultural events in the evening	<a href="https://www.teatroleal.es">https://www.teatroleal.es</a>

Are there any  
restaurants  
nearby the  
Meeting Point?



**Some turistic  
information**



There is only one restaurant (Yanfi Marina) located near the IEO-CSIC building, and it is advisable to make a reservation in advance. The other restaurants are situated in the village of San Andrés, close to La Teresitas Beach, and they tend to be quite busy, especially during peak hours

Can I go by bike to the IEO-CSIC building?



Yes, you can, but the bike lane ends at kilometer 6.5-7 of the road from Santa Cruz to San Andrés, and you will then have to continue on the road.



### Practical Tips for Cycling (Santa Cruz – San Andrés)

The bike lane runs along the coast but is not fully continuous, so be prepared to share the road in some sections at the end of the lane.

Pay special attention at junctions and port access areas, where traffic can be heavier.

Always follow traffic rules and signals, and ride defensively. Wearing a helmet is strongly recommended.

Bring water and sun protection, as the route is very exposed to the sun.

Check weather conditions, especially wind, which can be strong along the coast.

Use lights or reflective elements if cycling in low visibility conditions.



## By bike

There are no bicycle parking facilities in the IEO-CSIC building or nearby.

Please let us know if you plan to come by bike, and we will do our best to help you with this.

Contact: [mlourdes.ramos@ieo.csic.es](mailto:mlourdes.ramos@ieo.csic.es)

