



Regional Tuna Tagging Project – Indian Ocean

STATUS OF RTTP-IO DATA

J- Hallier & T. Athayde (RTTP-IO)

TAGGING DATA (CC)

RECOVERY DATA (PTRO)

**QUALITY CONTROL AND VALIDATION
(PTRO & CC)**

This work is essential but it is very time-consuming.





Tagging Data Quality Control

On board

Cruise leaders & Tagging Technicians

Spot checks and ACCESS checking queries
used to test the quality of the data

Eventually Corrections required by the CC



Tagging validation

In Seychelles

Data received daily by E-mail
are rapidly checked by the CC

ACCESS queries are run to
spot potential mistakes



STATUS OF THE TAGGING DATA BASE

- * Apart from some data related to secondary tables like bait catch, bait utilization, biological, etc... the tagging database is considered clean.
- * Following some recoveries it is sometimes necessary to make corrections into the tagging data.



Recovery Data Quality Control

Seychelles

Tag Recovery Team

In port

FV Crew

Add to the DB

Revised Daily

Revised Quarterly

Add to the DB

Validated and stored



Recovery Data Quality Control

Other platforms

(At sea, canneries, longliners and artisanal fleets)

Recovery network

Revised upon reception

Add to the DB

Validated and stored



Recovery Data Quality Control

Data Quality Indicators

- ☐ Length reliability
- ☐ Weight reliability
- ☐ Species
- ☐ Tag seeding
- ☐ Date and position

Data validation and storage (CC)

- Regular screening of the recovery database using ACCESS queries
- A specific query is designed to help solving the species discrepancies between tagging and recovery.
- Software called “Data Editor” is dealing with the repatriation of possible sets from PS logbooks by using the well numbers from the recovery.
- Consequently the dates and the positions of the different sets are associated to the recoveries.

Data validation and storage (CC)

Species correction

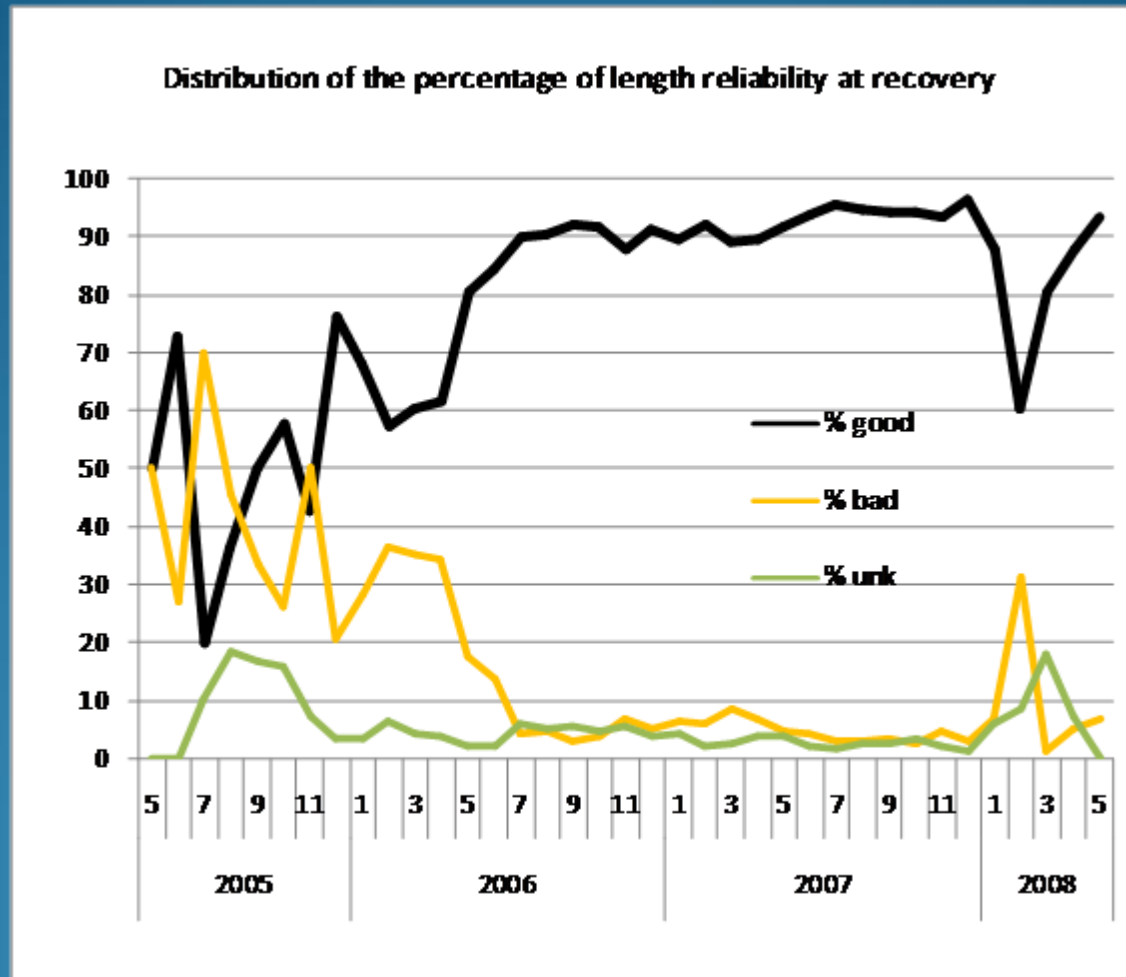
- The system put into place is coded in such a way that users can choose either to use the data as provided or to ignore the recoveries affected by the changes or even to go back to the original species at tagging or at recovery.
- So far 1360 recoveries are affected by species changes either at tagging or at recovery or 5.6% of all recoveries
- Not considering the unknown species, only 4.3% of the recoveries are concerned: 2.4% at tagging and 1.9% at recovery.

Data validation and storage (CC)

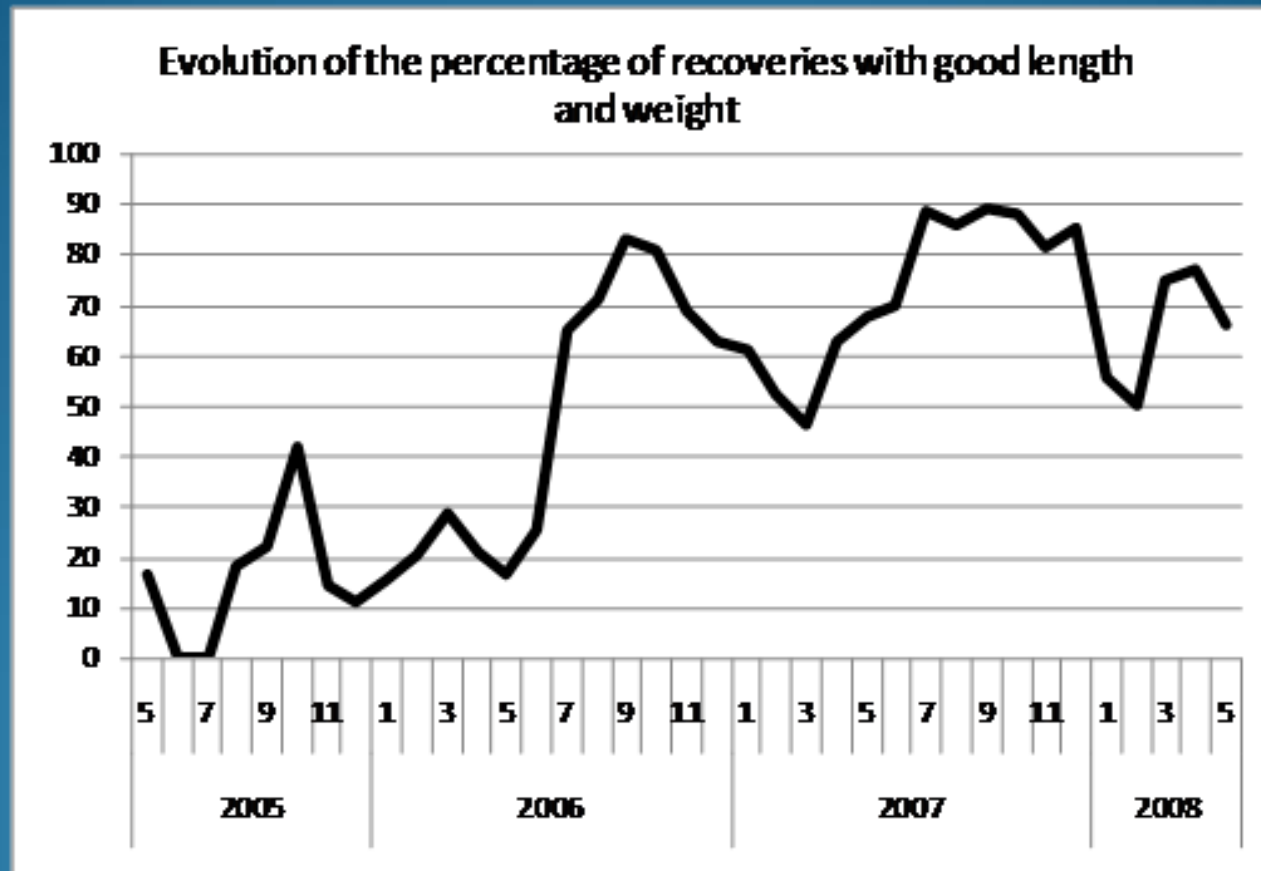
Data Editor

- Of the 23,472 recoveries from PS, 5,512 or 24% were found at sea so they have a known date and position
- Among the 17,560 remaining one, 16,412 have been edited or 93%.
- The Data Editor help the process but it is not automatic and each recovery is edited one by one.
- While editing an edit status is given: Complete, incomplete, missing data, no reliable convergence and unknown origin.

Some examples of the quality of the Data

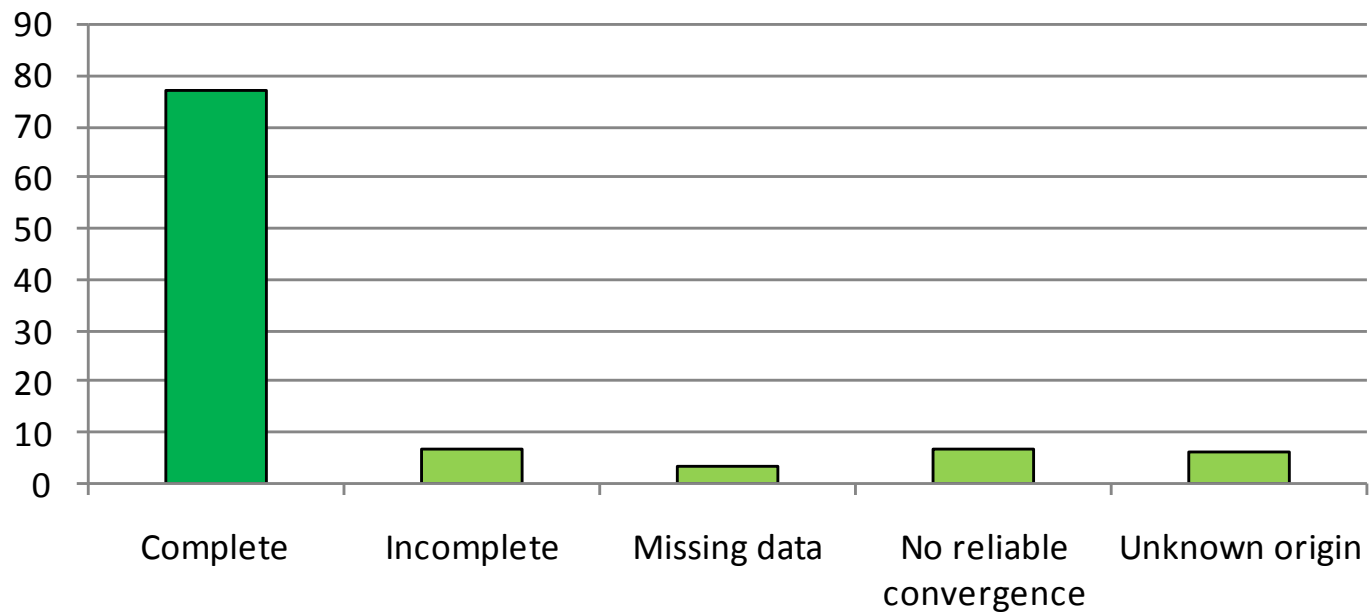


Some examples of the quality of the Data

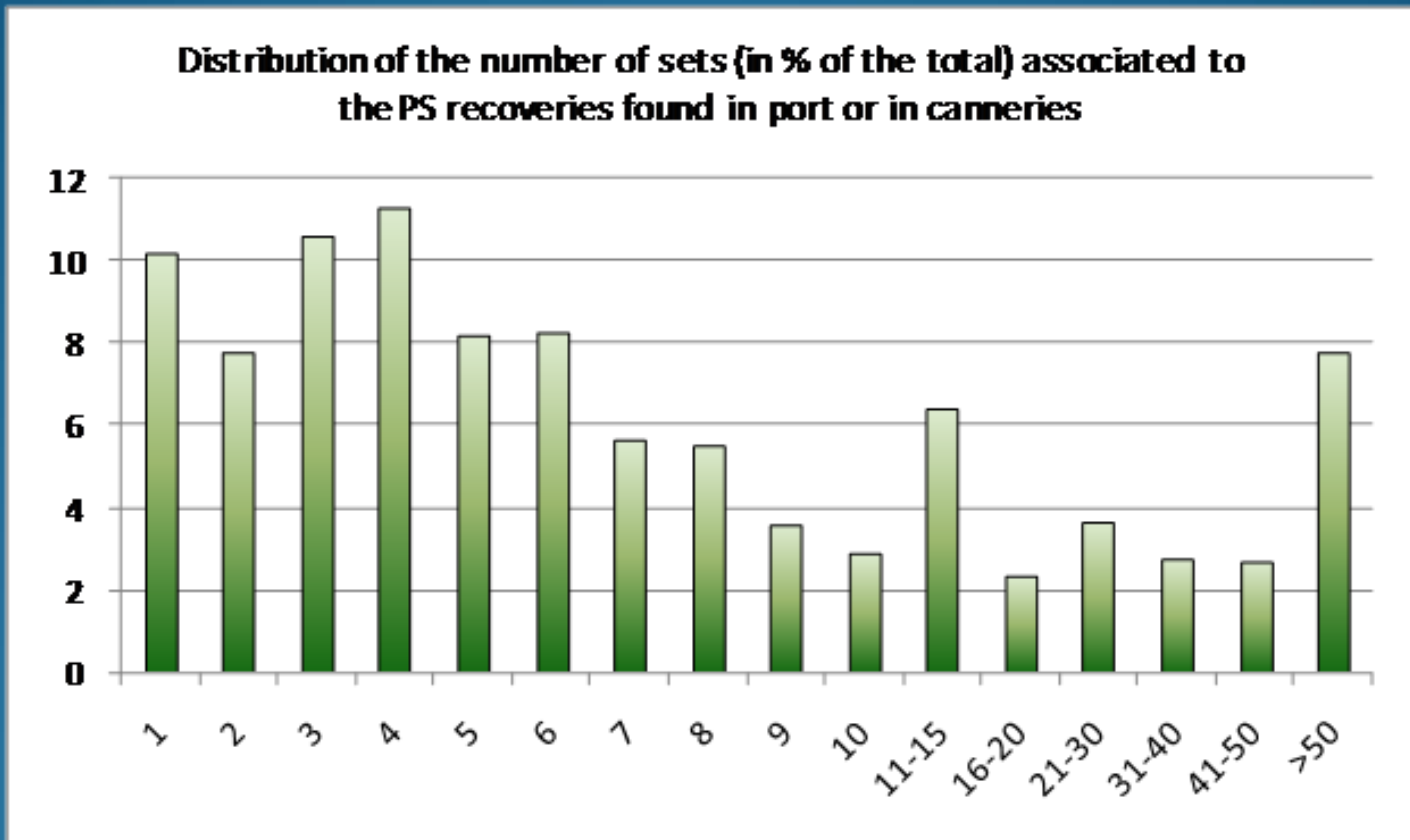


STATUS OF EDITED DATA

Purse seine recoveries found in wells and edited with the PS logbooks: status of the edited data in % of the 16,412 related recoveries

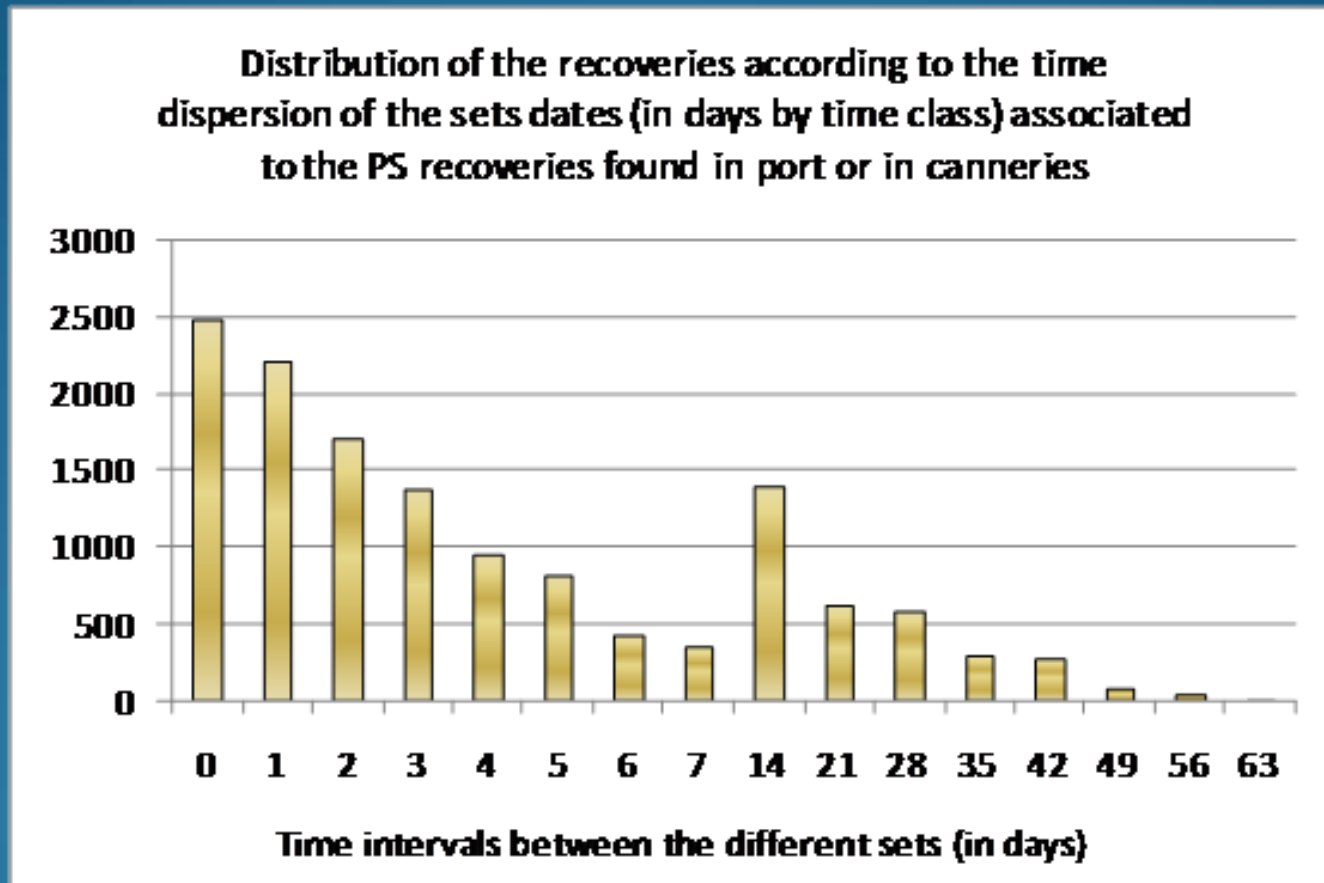


STATUS OF EDITED DATA



More than 50% of the recoveries are associated to 6sets or less than 6 sets

STATUS OF EDITED DATA



More than 75% of the recoveries are associated to sets that are 7 days apart or less than 7 days apart



STATUS OF RTTP-IO DATA

- The deadline for getting a clean database as soon as June 2008 has put a lot of pressure on the limited staff dealing with quality control and validation.
- Quality control is an on-going operation which will last as long as recoveries are coming in.
- We still have a backlog of recoveries to validate which was accumulated over the busy months we have just been through; this should be cleared in the next 2 months.
- However most of the validation has already been done.
- Some validations are still required in different fields dealing with positions on land, negative time-at-liberty, negative growth, etc...
- We are confident that we should have a cleaner database in time for the next October WPTT.



STATUS OF RTTP-IO DATA

Data availability

- Data are provided following an official request addressed to the IOTC Executive Secretary .
- Customers must follow the rules detailed in the Tagging Data Users Policy.
- A documentary file (in preparation) will be released together with the data files in order to detail the types of the different data and their coding.
- Customers are enticed to share with us any discrepancy they might discover into the database.
- For confidentiality reasons Vessels Names are not released.