



## **Fisheries Indicators**

### **For Albacore**

IOTC Secretariat

(October 2008)



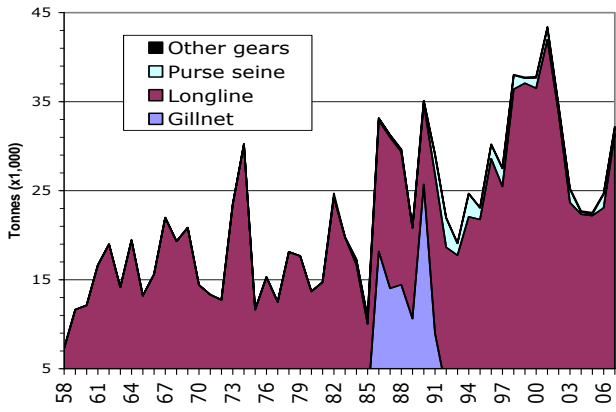
# Albacore

(Data as of October 2008)

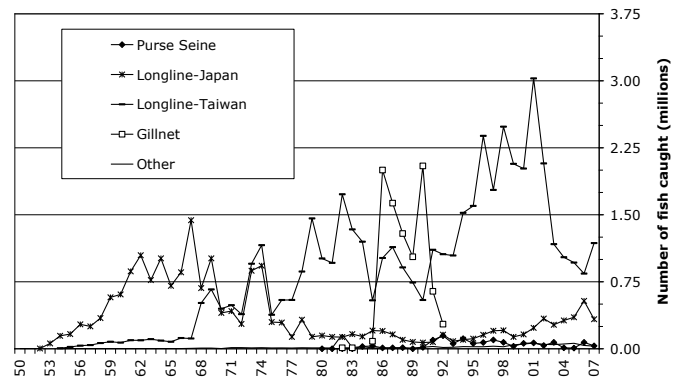
Table 1. Best scientific estimates of the catches of Albacore by gear and main fleets for the period 1958-2007 (in thousands of tonnes).

Gear	Fleet	58	59	60	61	62	63	64	65	66	67	68	69	70	71	72	73	74	75	76	77	78	79	80	81	82	83	84	
Purse seine	France																											0.3	
	Spain																												0.2
	Other Fleets	0.0	0.0	0.0	0.0	0.0	0.0	0.0	0.0	0.0	0.0	0.0	0.0	0.0	0.0	0.0	0.0	0.0	0.0	0.0	0.0	0.0	0.0	0.0	0.0	0.0	0.0	0.1	
	<i>Total</i>																						0.0	0.0	0.0	0.0	0.0	0.6	
Longline	China																												
	Taiwan,China	1.0	1.2	1.1	1.4	1.3	1.6	1.5	1.1	1.7	1.6	7.6	7.7	7.2	7.0	7.0	12.0	17.4	6.4	9.7	9.8	12.8	15.0	11.0	12.3	21.9	17.0	13.9	
	Japan	6.3	10.4	11.1	15.2	17.6	12.6	17.8	11.4	13.1	14.1	10.1	8.6	4.9	3.3	1.4	2.0	2.8	1.3	1.2	0.4	0.4	0.4	0.6	1.2	1.3	1.7	1.8	
	Indonesia																	0.0	0.1	0.1	0.1	0.2	0.3	0.2	0.2	0.2	0.2	0.3	
	Korea, Republic of									0.5	0.6	6.2	0.9	4.4	1.6	2.4	3.8	9.1	9.7	3.9	4.2	2.1	4.6	2.0	1.8	0.9	0.6	0.4	
	Other Fleets	0.0	0.0	0.0	0.0	0.0	0.0	0.1	0.2	0.2	0.0	0.8	0.2	0.6	0.5	0.5	0.4	0.2	0.1	0.0	0.1	0.1	0.0	0.0	0.1	0.1	0.2	0.2	
	<i>Total</i>	7.3	11.6	12.1	16.6	19.0	14.1	19.4	13.2	15.6	22.0	19.3	20.8	14.4	13.3	12.7	23.4	30.2	11.6	15.3	12.5	18.1	17.7	13.7	14.7	24.2	19.6	16.7	
Gillnet	Taiwan,China																										0.1	0.1	
	<i>Total</i>																										0.1	0.1	
Other gears	<i>Total</i>	0.0	0.0	0.0	0.0	0.0	0.0	0.0	0.0	0.0	0.0	0.0	0.0	0.0	0.0	0.0	0.0	0.0	0.0	0.0	0.0	0.0	0.0	0.0	0.0	0.4	0.0	0.1	
All	<i>Total</i>	7.3	11.6	12.1	16.6	19.0	14.2	19.4	13.2	15.6	22.0	19.3	20.9	14.4	13.3	12.8	23.5	30.3	11.7	15.3	12.5	18.1	17.7	13.7	14.7	24.7	19.8	17.3	

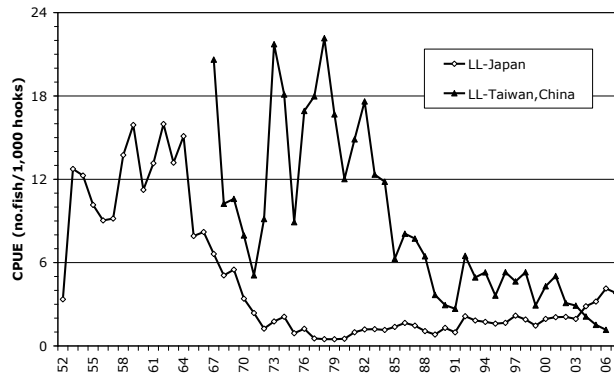
Gear	Fleet	Av03/07	Av58/07	85	86	87	88	89	90	91	92	93	94	95	96	97	98	99	00	01	02	03	04	05	06	07	
Purse seine	France	0.4	0.2	0.5	0.2	0.2	0.2	0.0	0.0	0.9	1.4	0.3	0.3	0.4	0.4	0.5	0.5	0.2	0.4	0.7	0.3	0.6	0.1	0.1	0.9	0.3	
	Spain	0.3	0.2	0.1	0.0	0.0	0.1	0.0	0.1	1.1	1.5	0.9	1.8	0.6	0.8	1.0	0.3	0.2	0.4	0.3	0.2	0.5	0.1	0.0	0.4	0.2	
	Other Fleets	0.2	0.1	0.1	0.0	0.0	0.0	0.0	0.2	0.3	0.4	0.1	0.5	0.4	0.4	0.5	0.8	0.2	0.4	0.3	0.3	0.4	0.1	0.0	0.3	0.2	
	<i>Total</i>	0.8	0.5	0.7	0.2	0.2	0.3	0.0	0.3	2.2	3.3	1.3	2.6	1.3	1.6	2.0	1.6	0.6	1.2	1.3	0.8	1.5	0.2	0.2	1.5	0.7	
Longline	China																										
	Taiwan,China	12.5	10.7	6.2	11.1	13.1	11.0	7.1	5.8	13.1	11.1	12.0	14.4	14.2	16.9	15.2	21.6	22.5	21.7	26.9	21.5	13.1	12.5	10.4	9.5	16.9	
	Japan	4.6	4.7	2.3	2.5	2.3	1.3	0.9	1.0	1.0	1.8	1.3	1.8	2.0	2.4	3.2	3.2	2.3	2.6	3.0	3.2	2.3	3.6	4.1	6.4	6.4	
	Indonesia	3.2	0.7	0.3	0.1	0.3	0.3	0.4	0.4	0.3	0.5	0.4	0.6	0.7	1.3	1.6	1.5	1.7	2.7	2.9	2.6	4.8	4.2	2.6	2.2	2.2	
	NEI-Deep-freezing	1.0	1.5	0.0	0.7	0.7	1.7	1.0	1.2	2.5	1.8	3.2	4.2	4.2	7.3	4.8	9.0	9.5	8.2	5.8	3.8	1.4	0.7	1.8	0.7	0.5	
	France-Reunion	0.5	0.1							0.0	0.0	0.1	0.1	0.1	0.3	0.2	0.3	0.3	0.5	0.6	0.3	0.3	0.4	0.7	0.5	0.8	
	NEI-Fresh Tuna	0.5	0.1						0.0	0.0	0.0	0.0	0.0	0.0	0.1	0.1	0.1	0.1	0.1	0.0	0.0	0.0	0.1	0.2	1.1	1.1	
	Belize	0.5	0.1																	1.4	0.6	0.2	0.1	0.7	0.7	0.7	
	Spain	0.4	0.1															0.0	0.0	0.1	0.2	0.2	0.1	0.1	0.8	0.6	0.6
	Seychelles	0.4	0.1																	0.0	0.4	0.8	1.1	1.2	0.1	0.1	0.4
	Korea, Republic of	0.2	1.3	0.5	0.4	0.4	0.4	0.3	0.2	0.3	0.1	0.1	0.1	0.1	0.0	0.1	0.1	0.0	0.1	0.0	0.0	0.1	0.4	0.2	0.3	0.3	
	Other Fleets	0.8	0.3	0.0	0.1	0.1	0.2	0.5	0.5	0.6	0.7	0.6	0.8	0.4	0.2	0.2	0.7	0.5	0.2	0.3	0.2	0.3	0.4	0.6	1.0	1.7	
		<i>Total</i>	24.5	19.6	9.3	14.7	17.0	14.9	10.2	9.0	17.8	16.0	17.7	22.1	21.8	28.6	25.5	36.4	37.1	36.5	42.0	33.7	23.7	22.3	22.2	23.1	31.4
Gillnet	Taiwan,China	0.0	1.9	0.7	18.2	14.0	14.4	10.6	25.7	9.0	2.6																
	<i>Total</i>	0.0	1.9	0.7	18.2	14.0	14.4	10.6	25.7	9.0	2.6																
Other gears	<i>Total</i>	0.1	0.1	0.0	0.0	0.0	0.0	0.0	0.0	0.1	0.0	0.0	0.1	0.1	0.1	0.1	0.1	0.1	0.1	0.2	0.1	0.1	0.1	0.2	0.1	0.1	
All	<i>Total</i>	25.5	22.1	10.8	33.2	31.3	29.6	20.8	35.1	29.1	22.0	19.1	24.7	23.1	30.2	27.6	38.0	37.7	37.8	43.4	34.6	25.3	22.7	22.5	24.7	32.2	



**Figure 1. Yearly catches (thousand of metric tonnes) of albacore by gear from 1958 to 2007**



**Figure 2. Yearly catches (numbers) of albacore by gear from 1958 to 2007**



**Figure 3. Nominal CPUE for the Japanese and Taiwanese longline fleets in the Indian Ocean**

Figure 4: Catches of albacore (tons) in the Indian Ocean for the period 1958- 2007

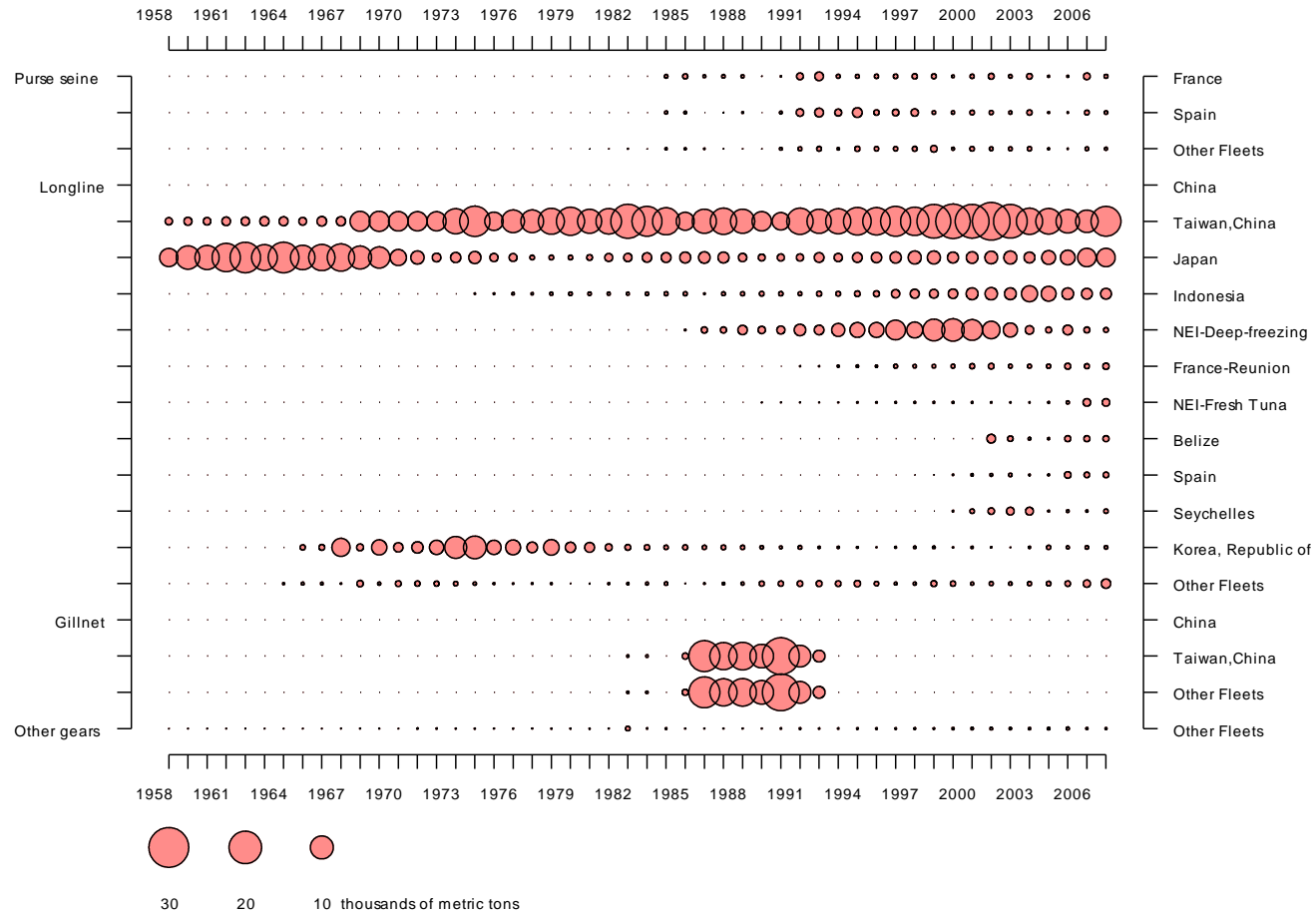


Figure 5: Catches of albacore (tons) by industrial fleets in the Indian Ocean by quarter for the period 1958- 2007

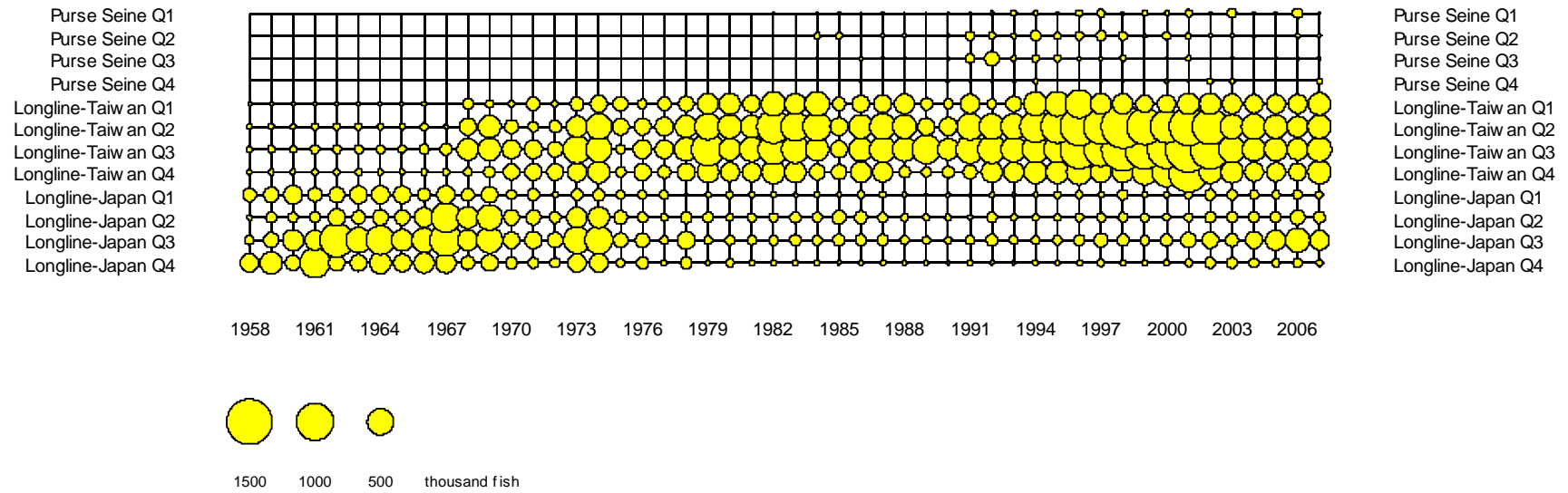
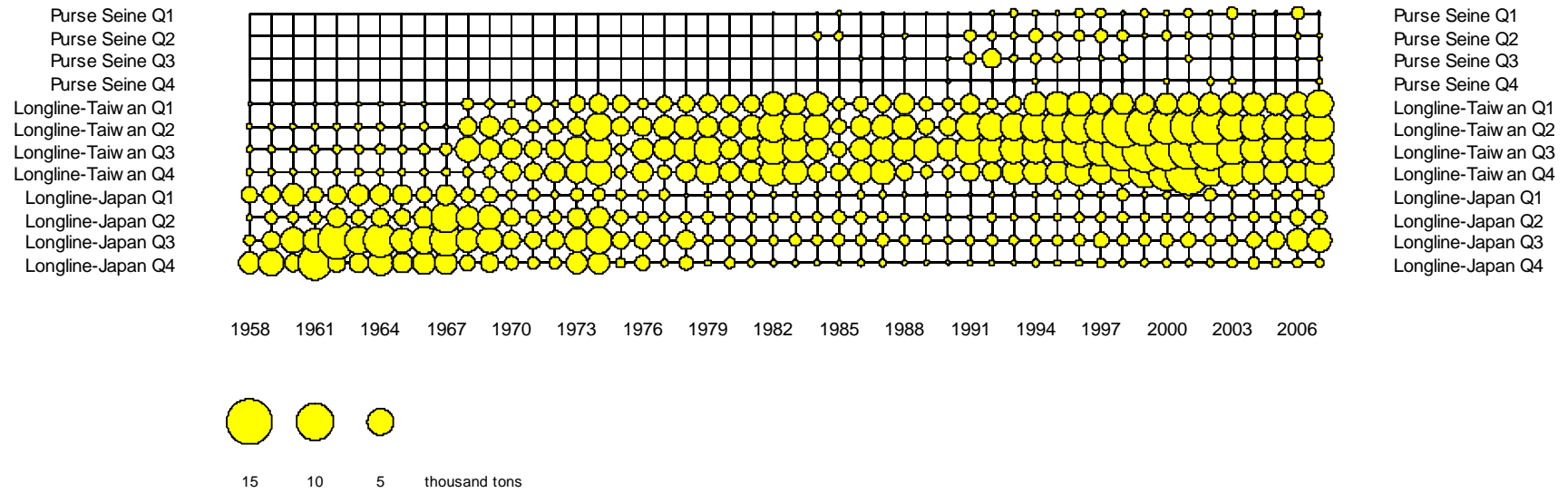


Figure 6: Catches of albacore (numbers) by industrial fleets in the Indian Ocean by quarter for the period 1958- 2007



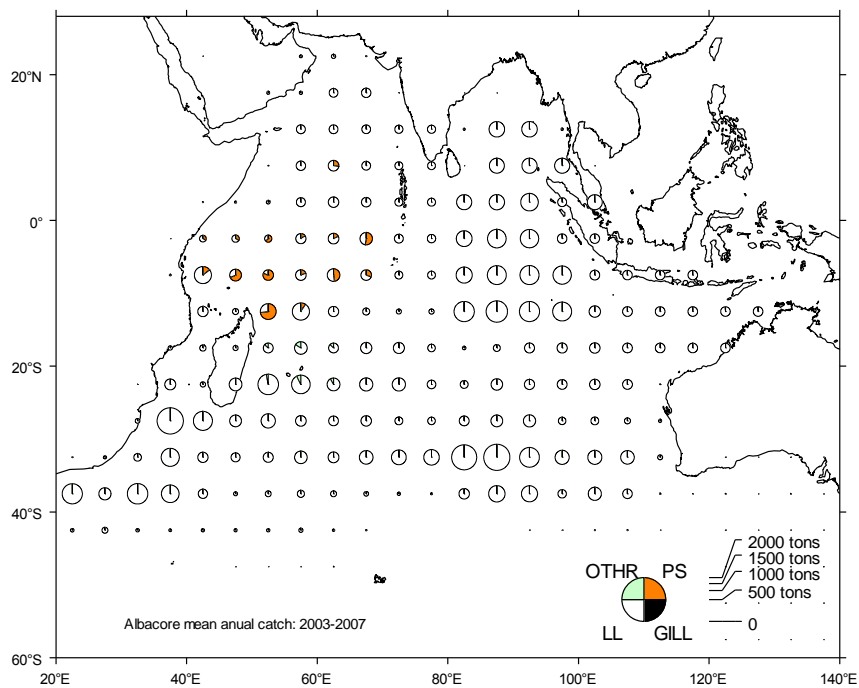
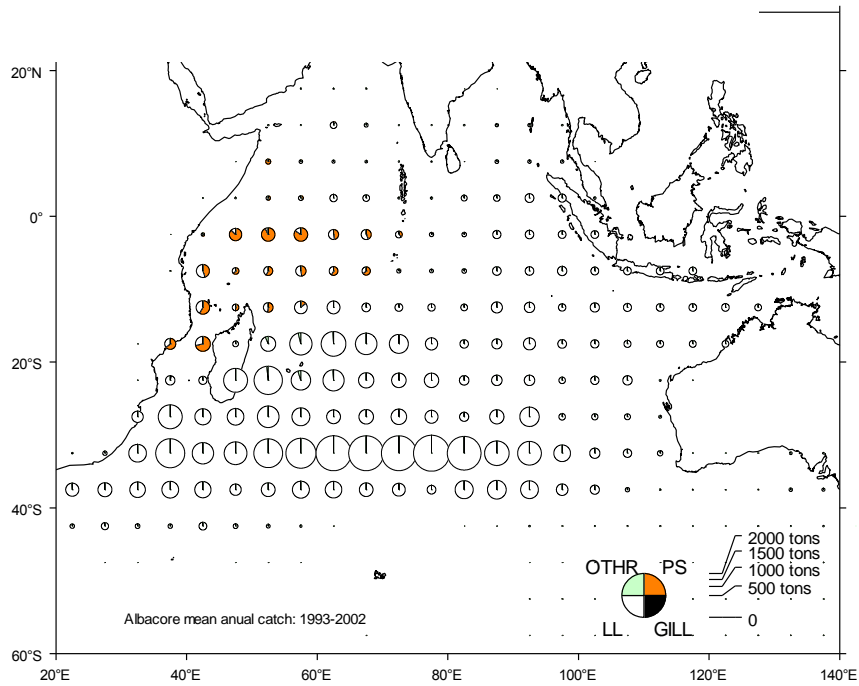
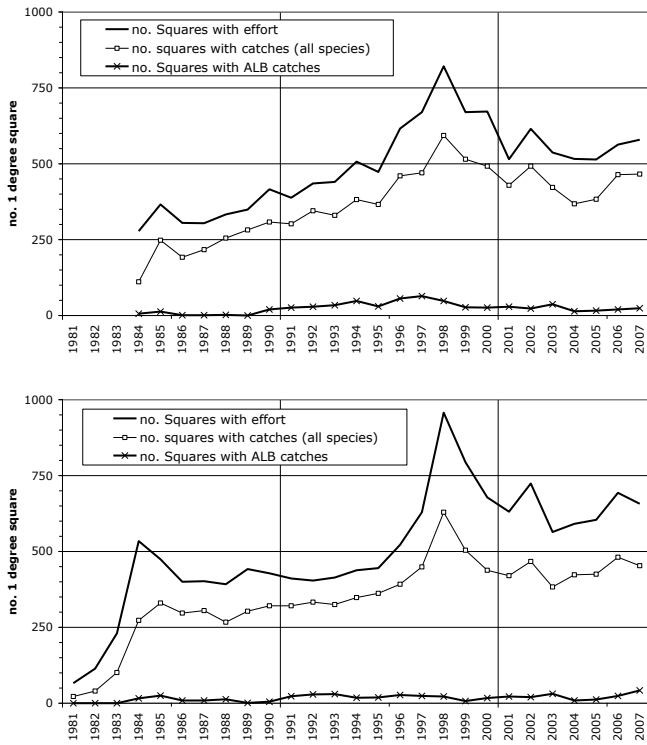


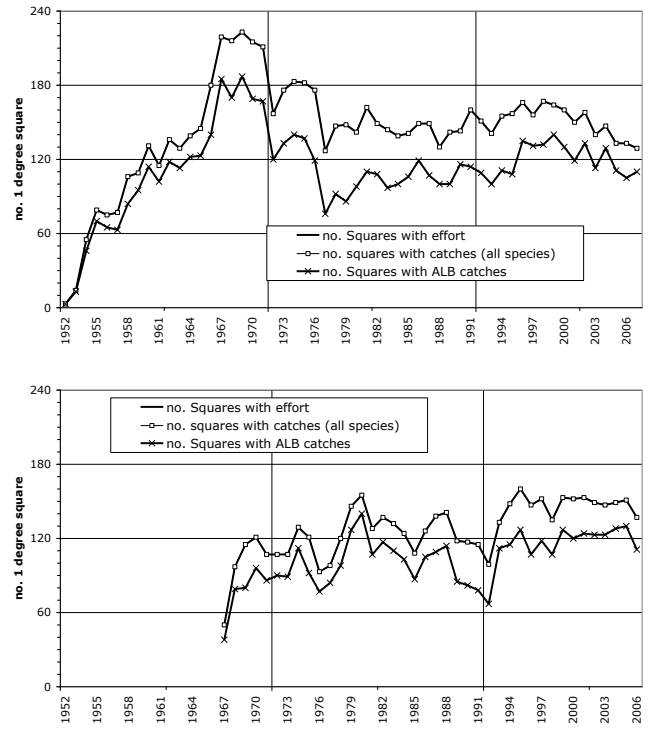
Figure 7-8. Mean of annual total catches of albacore (t) by longline and purse seine vessels operating in the Indian Ocean



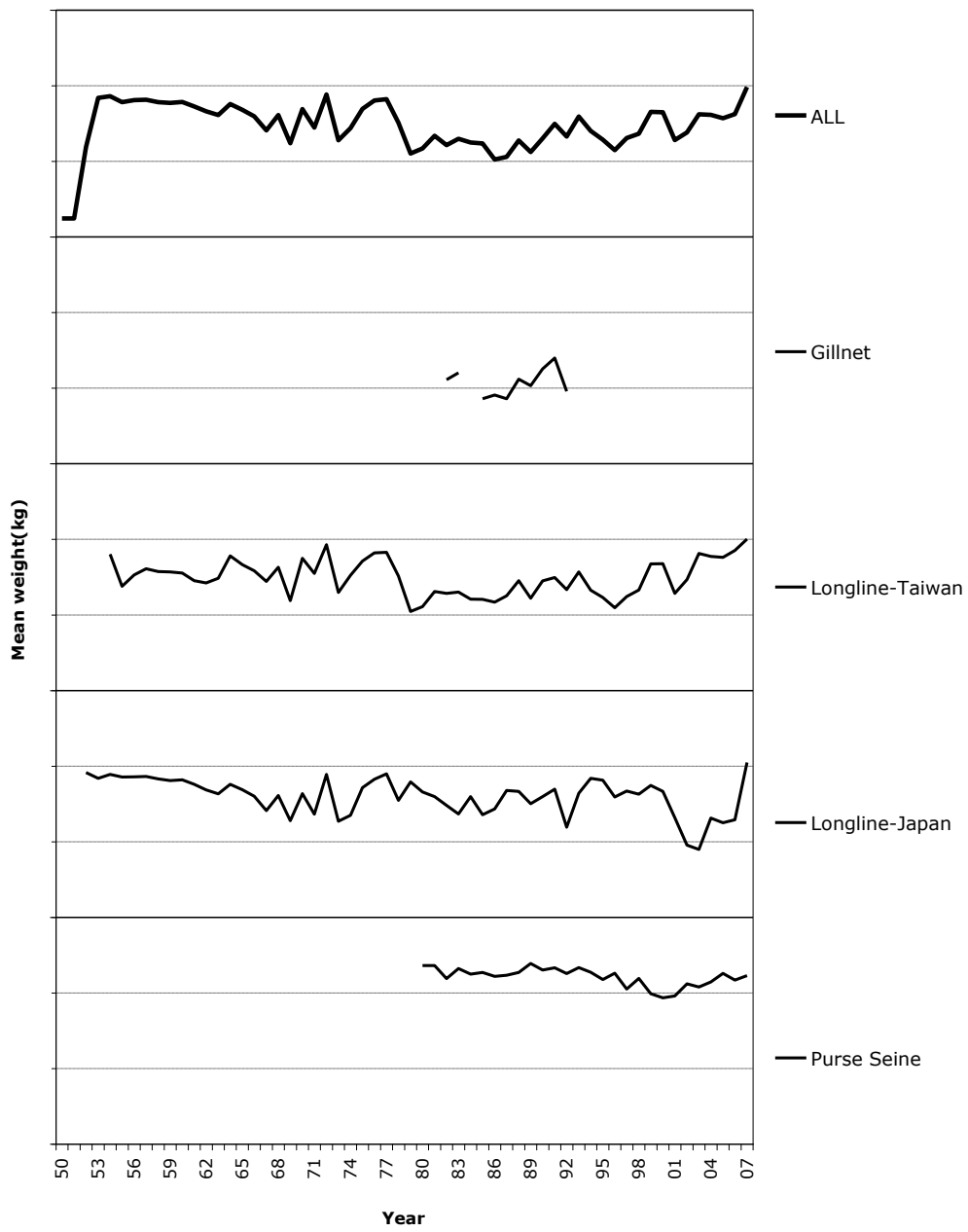
over the period 1993 to 2002 (top) and 2003 to 2007 (bottom).



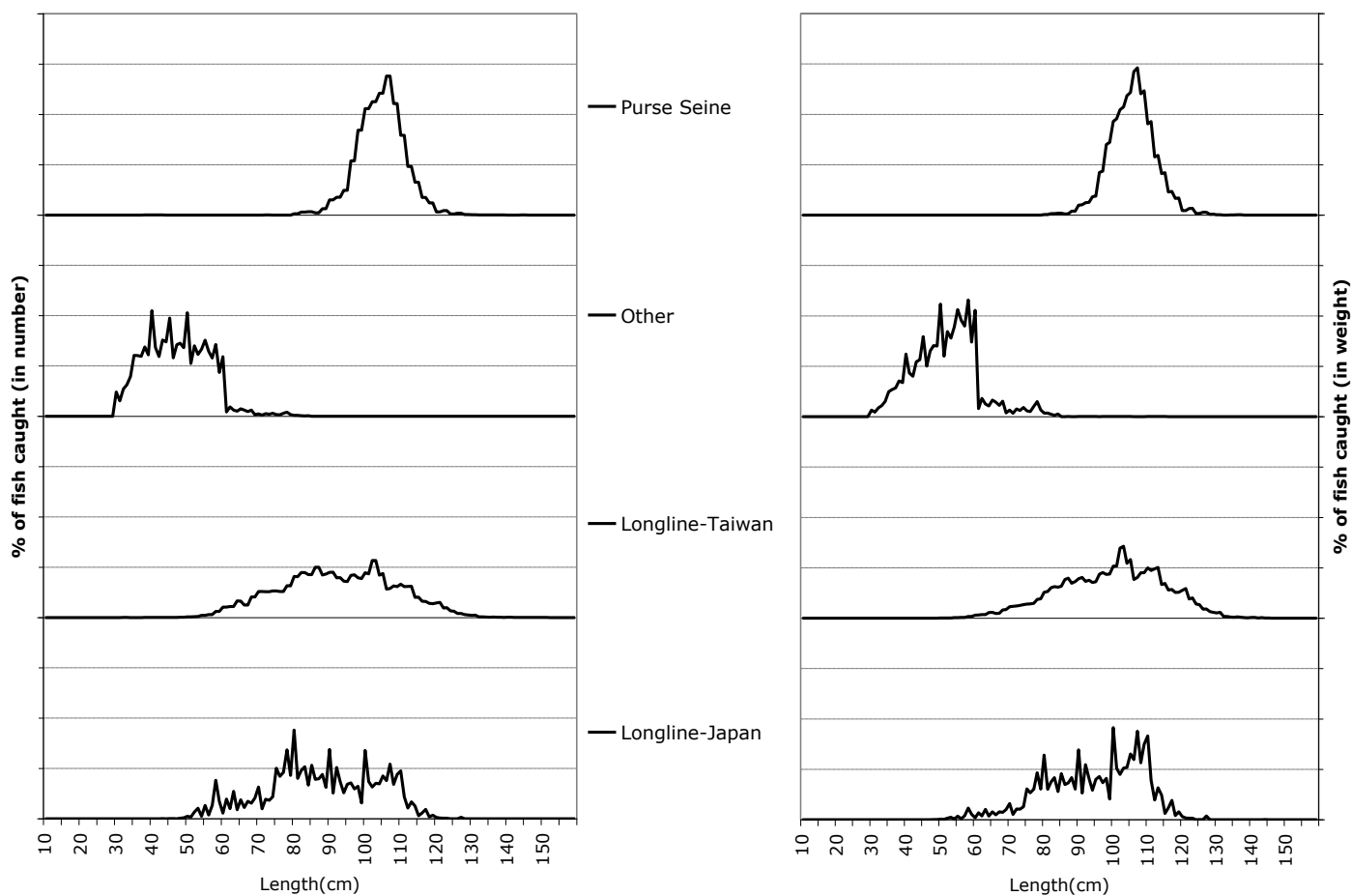
**Figure 9-10. Number of one degree squares explored by the purse seine fishery, 1981-2007**  
Purse seiners from Spain (top) and France (bottom)



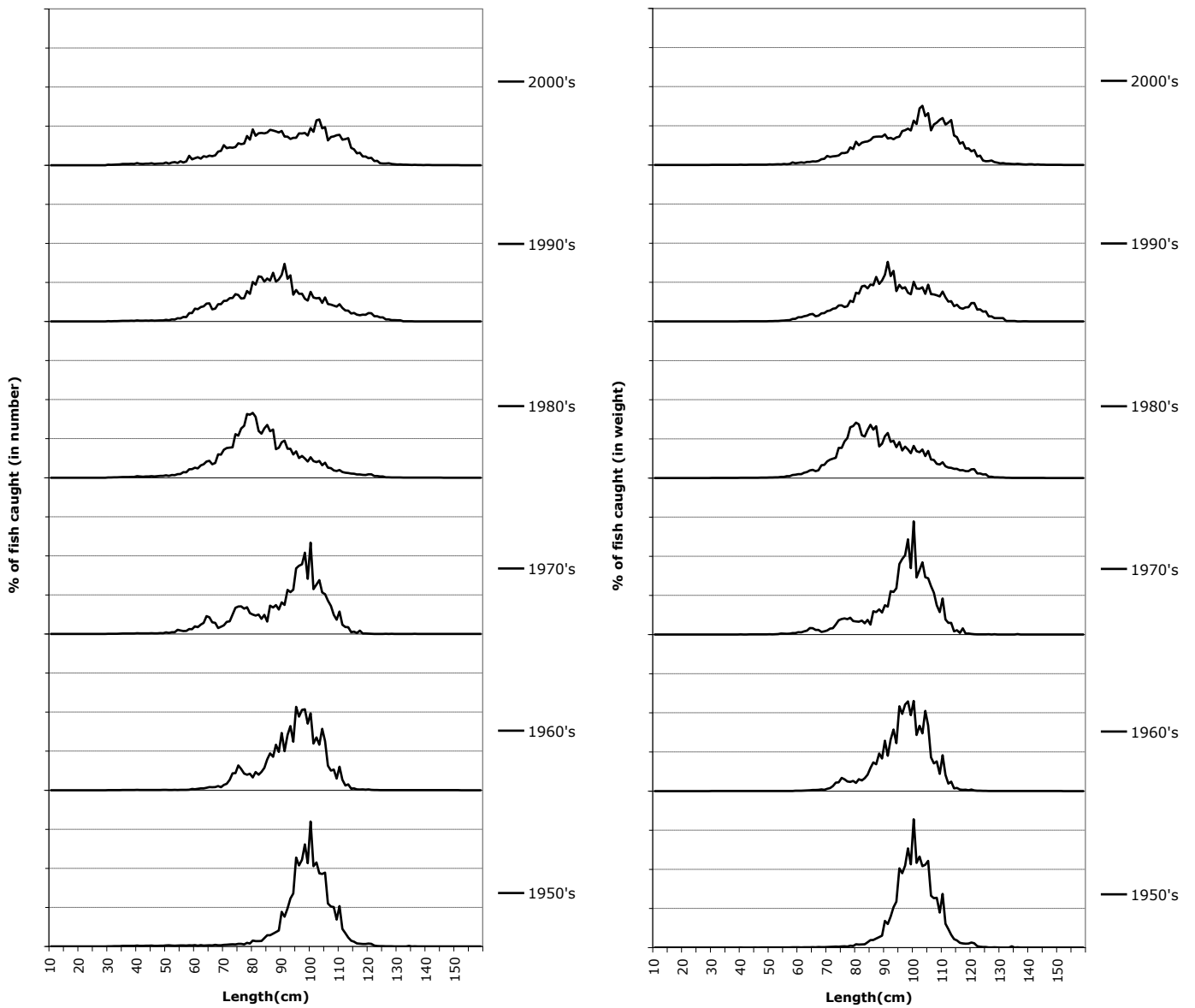
**Figure 11-12. Number of five degree squares explored by the longline fishery, 1952-2007**  
Longliners from Japan (top) and Taiwan,China (bottom)



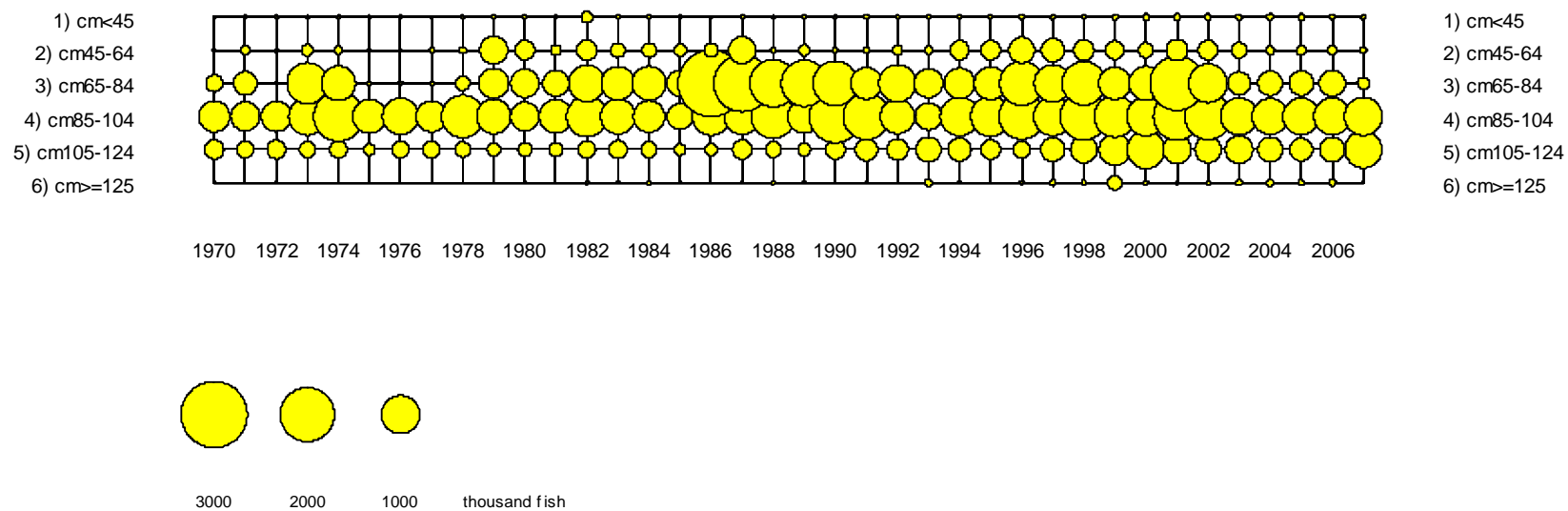
**Figure 13. Mean weight of albacore measured from purse seine and longline catches over time (broken lines represent 10kg each)**



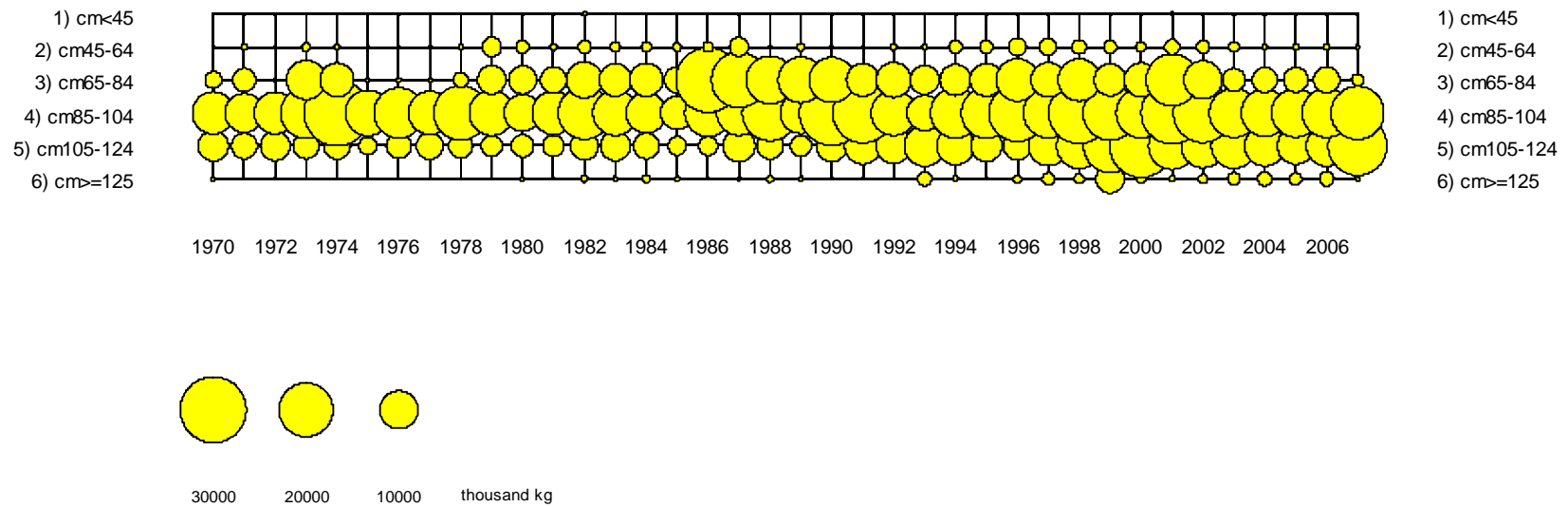
**Figures 14-15. Mean catch at size of albacore measured from purse seine and longline catches from 1998-2007: in number (left panels) and weight (right panels) (broken lines represent 2.5% each)**



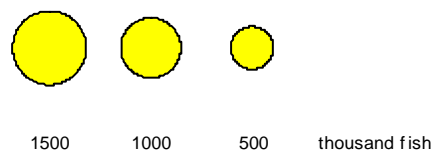
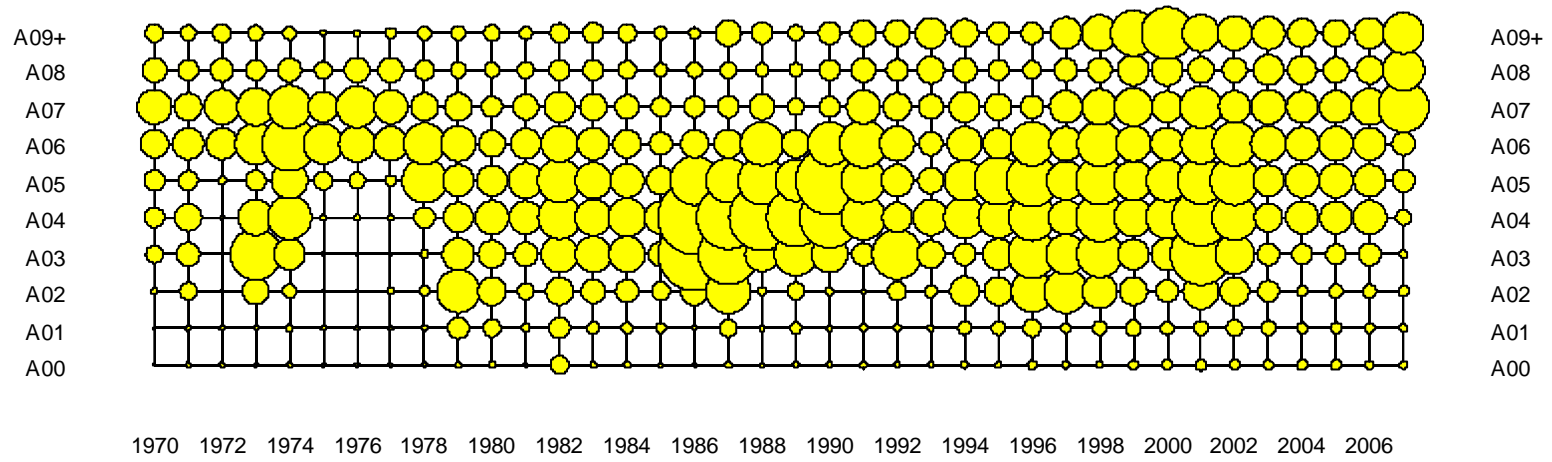
**Figure 16-17. Mean catch by size in numbers (left panels) and weight (right panels) for six ten-year mean periods: 1950-59, 1960-69, 1970-79, 1980-89, 1990-99 and 2000-2007 (broken lines represent 2.5% each)**



**Figure 18. Mean catch at size (number) of albacore in purse seine, longline and other gears (including lines, gillnets and baitboats) catches over the period 1970-2007**



**Figure 19. Mean catch at size (weight) of albacore in purse seine, longline and other gears (including lines, gillnets and baitboats) catches over the period 1970-2007**



*Figure 20. Mean catch at age (number) of albacore per quarter over the period 1970-2007*