

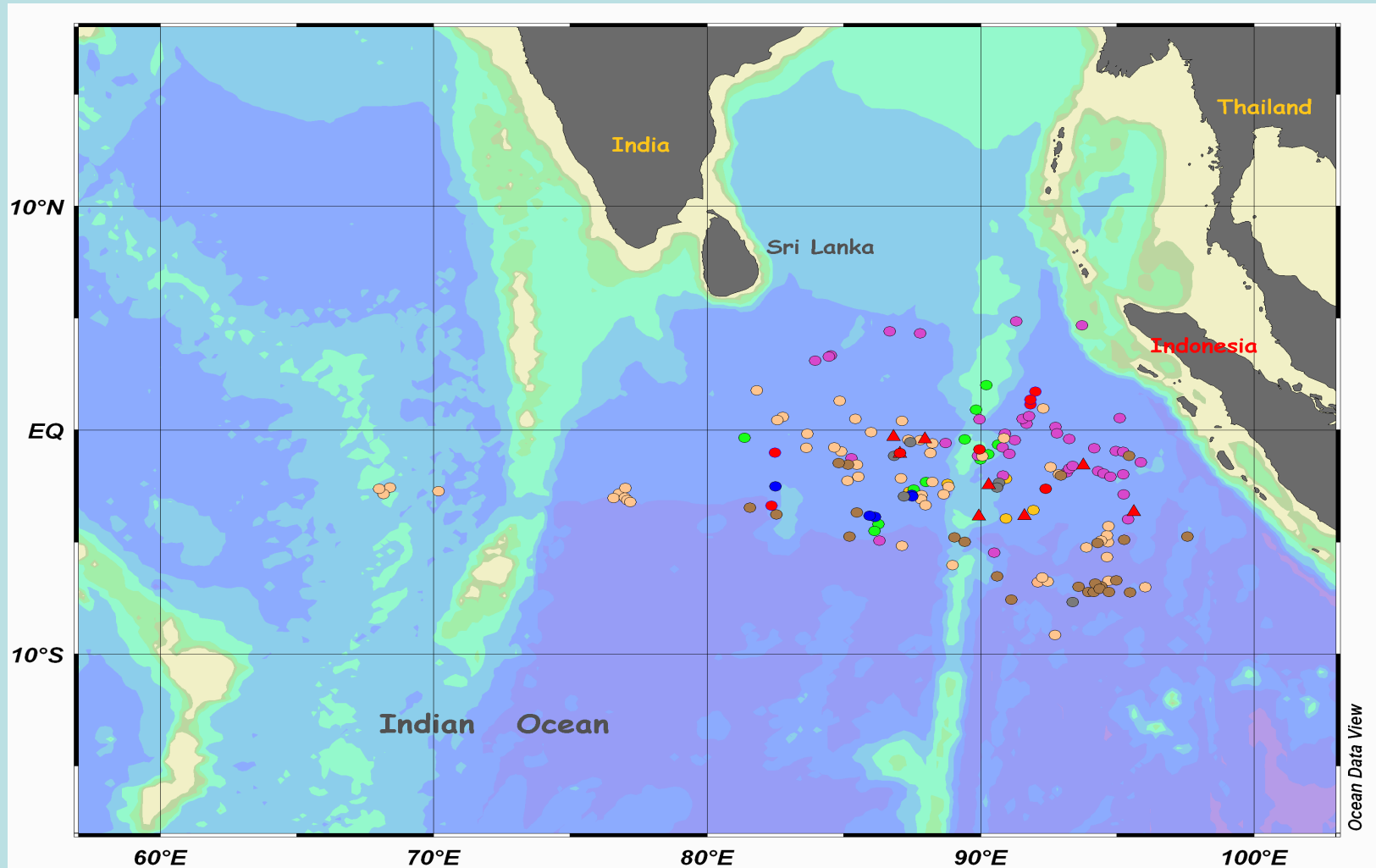
Catch of Tuna Purse Seine from Research Vessels in the Eastern Indian Ocean during 1993 – 2007

Lt.JG. Pisanu Siripitrakool

Wutechai Utayamakool

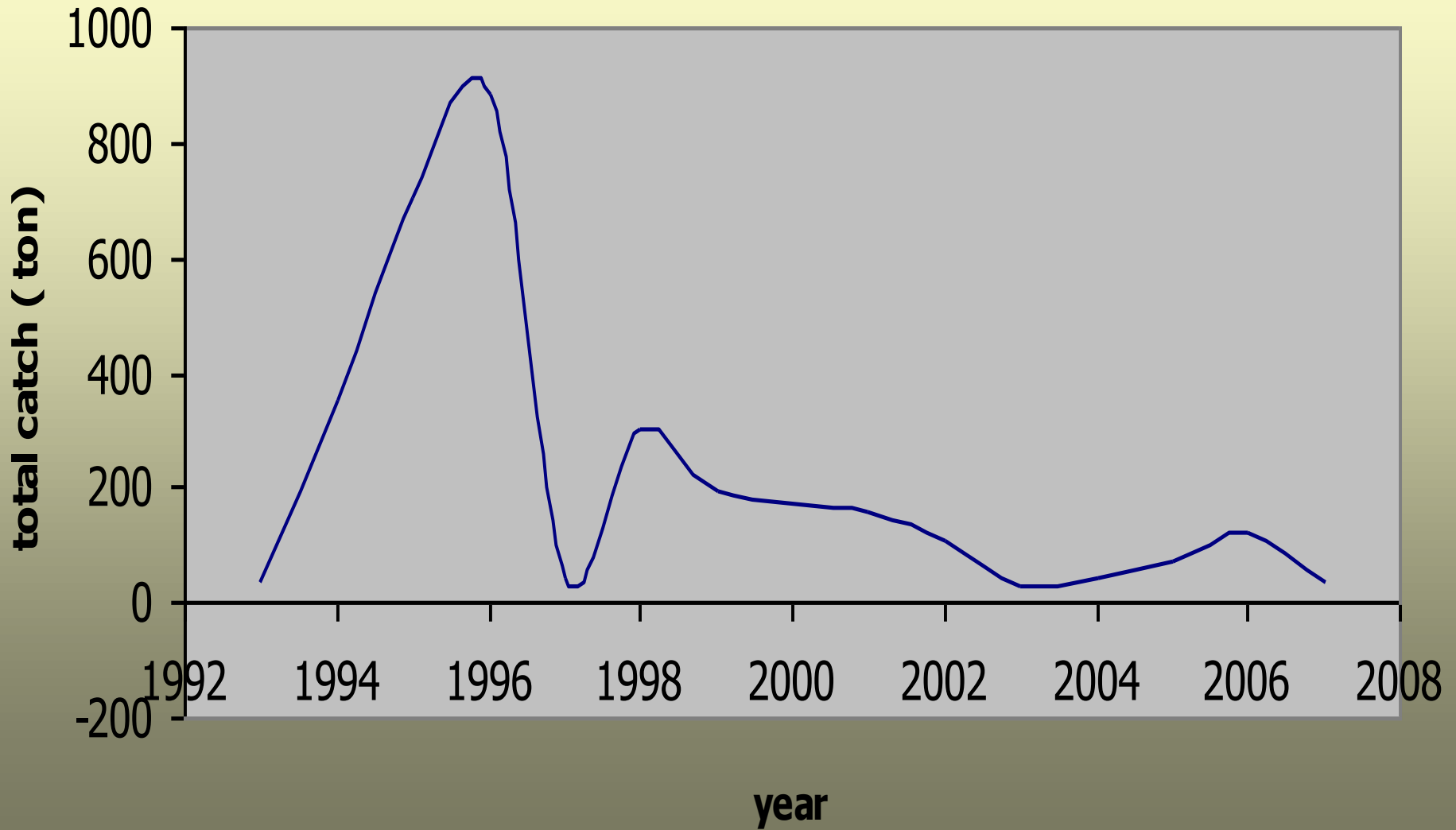
Crd.Pornchai Singhaboon

Catch position in the Eastern Indian Ocean 1993-2007



Year	Catch (ton)					Effort (Haul)
	SKT	YFT	BET	BYCATCH	TOTAL	
1993	20.661	12.832	3.780	1.727	39.000	5
1994	272.700	55.159	26.141	0.000	354.000	11
1995	475.769	143.112	62.434	22.374	703.690	38
1996	516.367	187.069	136.008	44.270	883.715	55
1997	9.622	20.830	13.284	1.142	44.878	5
1998	187.741	45.244	64.670	7.420	305.075	28
1999	97.342	60.037	36.622	0.000	194.000	6
2001	62.396	62.926	20.504	10.497	156.323	23
2002	60.991	17.714	24.476	7.224	110.405	18
2003	16.680	5.380	5.220	0.455	27.735	3
2004	23.460	13.594	5.910	3.282	46.246	8
2005	50.382	12.457	13.565	0.152	76.556	5
2006	71.910	22.101	30.303	0.687	125.000	5
2007	19.377	13.395	0.379	0.558	33.709	4
	1,885.4				3,100.3	

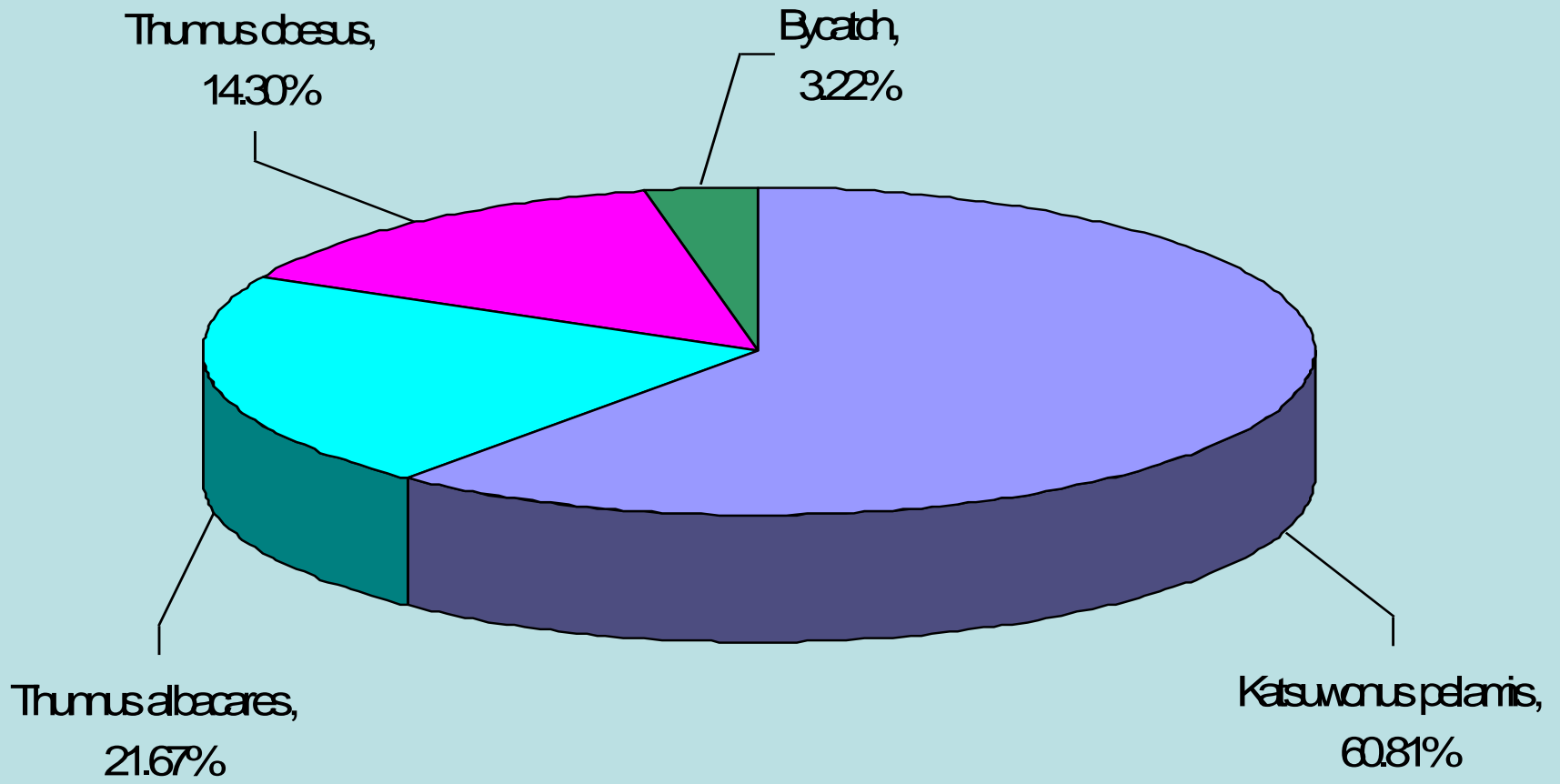
Thai R/V(PS)



Species composition

- ***Thirty-five species of large pelagic fish and one mesopelagic octopus have reported***
- ***Main species composition***
Katsuwonus pelamis Skipjack tuna
Thunnus albacares Yellowfin tuna
Thunnus obesus Bigeye tuna.

The catch composition of tuna purse seine 1993 to 2007



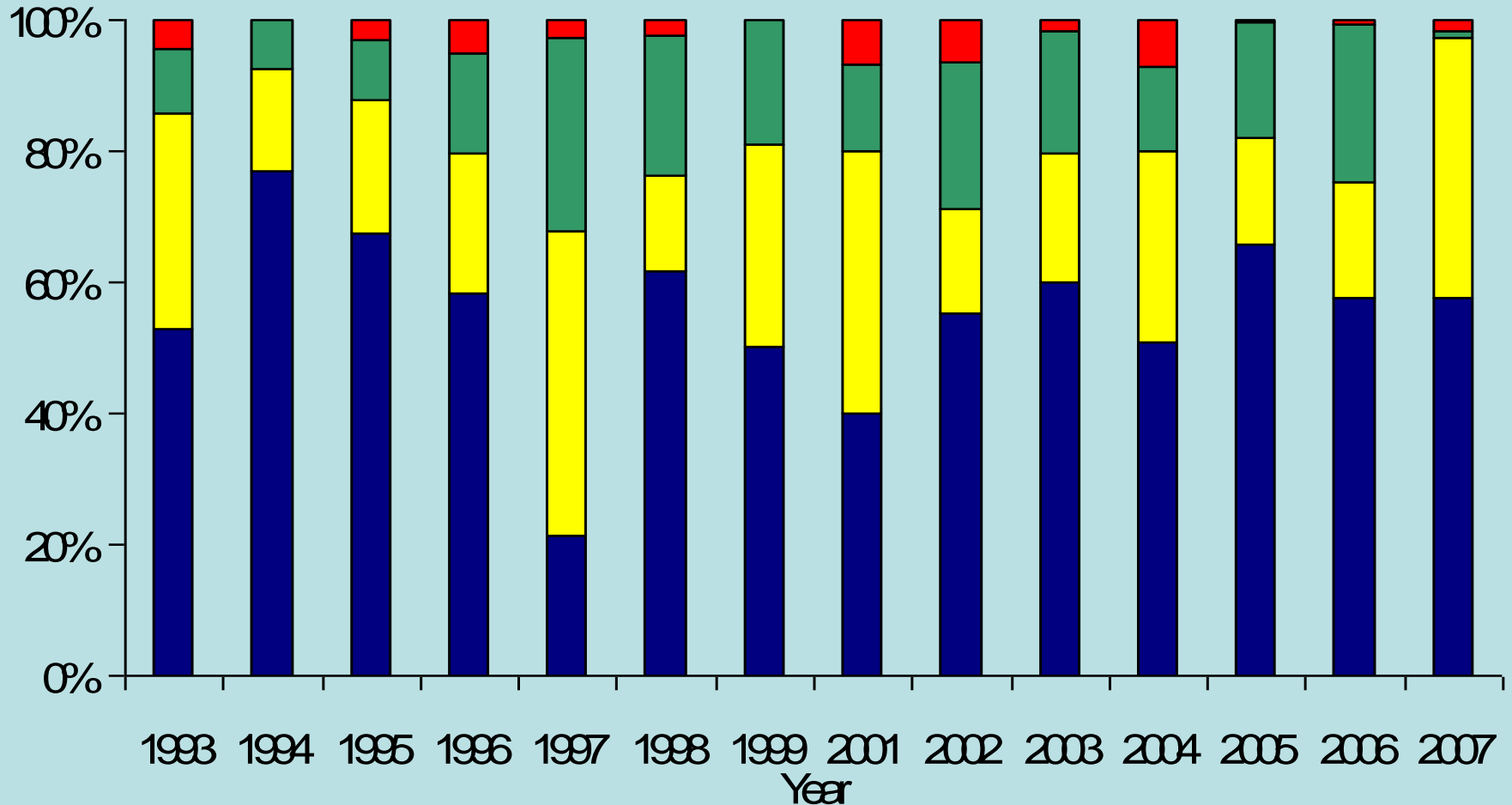
The catch composition of tuna purse seine 1993 to 2007

Scientific name	Common name	Scientific name	Common name
<i>Auxis thazard</i>	Frigate tuna	<i>Coryphaena hippurus</i>	Common dolphinfish
<i>Katsuwonus pelamis</i>	Skipjack tuna	<i>Dasyatis violacea</i>	Stingrays
<i>Thunnus alalunga</i>	Albacore tuna	<i>Decapterus macarellus</i>	Mackerel scad
<i>Thunnus albacares</i>	Yellowfin tuna	<i>Elagatis bipinnulata</i>	Rainbow runner
<i>Thunnus obesus</i>	Bigeye tuna	<i>Kyphosus vaigiensis</i>	Brassy chub
<i>Abinnes hians</i>	Flat needlefish	<i>Lobotes surinamensis</i>	Tripletail
<i>Acanthocybium solandri</i>	Wahoo	<i>Makaira indica</i>	Black Marlin
<i>Alopias</i> sp.	Pelagic tresher shark	<i>Makaira mazara</i>	Indo-Pacific bluemarlin
<i>Aluterus monoceros</i>	Unicorn leather jacket	<i>Megachasma pelagios</i>	Megamouth shark
<i>Aluterus scriptus</i>	Unicorn leatherjack	<i>Mobula diabolus</i>	Devil rays
<i>Auxis thazard</i>	Frigate tuna	<i>Platex tiera</i>	Battfish
<i>Brama dussumieri</i>	Pomfret	<i>Seriola rivoliana</i>	Longfin yellowtail
<i>Canthidermis maculatus</i>	Rough triggerfish	<i>Sphyrnaena barracuda</i>	Great barracuda
<i>Carangoides orthogrammus</i>	Trevally	<i>Thysanoteuthis rhombus</i>	Diamondback squid
<i>Caranx lugubris</i>	Trevally	<i>Tylosurus crocodilus</i>	Hound needlefish
<i>Carcharhinus</i> sp.	Sharks	<i>Uraspis helvora</i>	White-tongued trevalle
<i>Coryphaena hippurus</i>	Common dolphinfish	<i>Xiphias gladius</i>	Swordfish
<i>Coryphaena equiselis</i>	Pompano dolphinfish	<i>Octopus</i> sp.	Octopus

Catch composition of Tunas and Bycatch species (1993 – 2007)

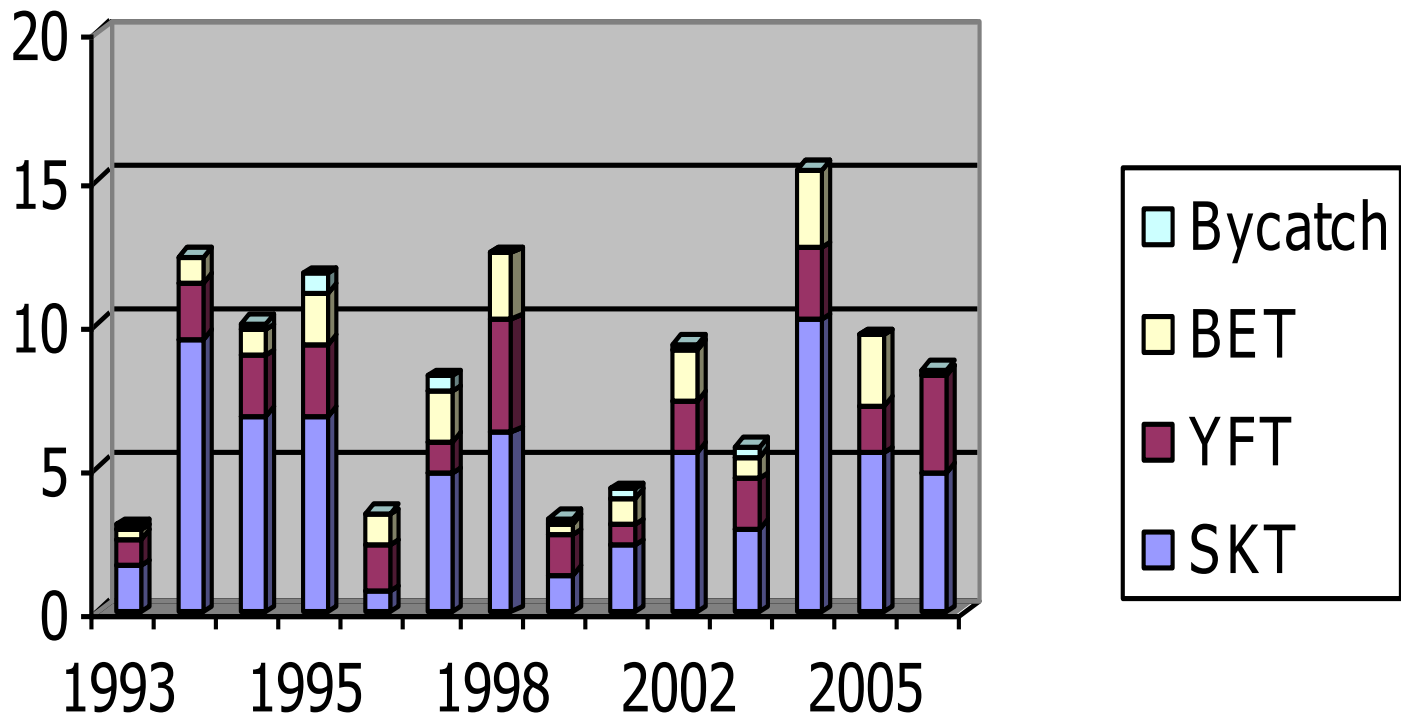
Catch composition(%)

■ *Katsuwonus pelamis* ■ *Thunnus albacares* ■ *Thunnus obesus* ■ Bycatch

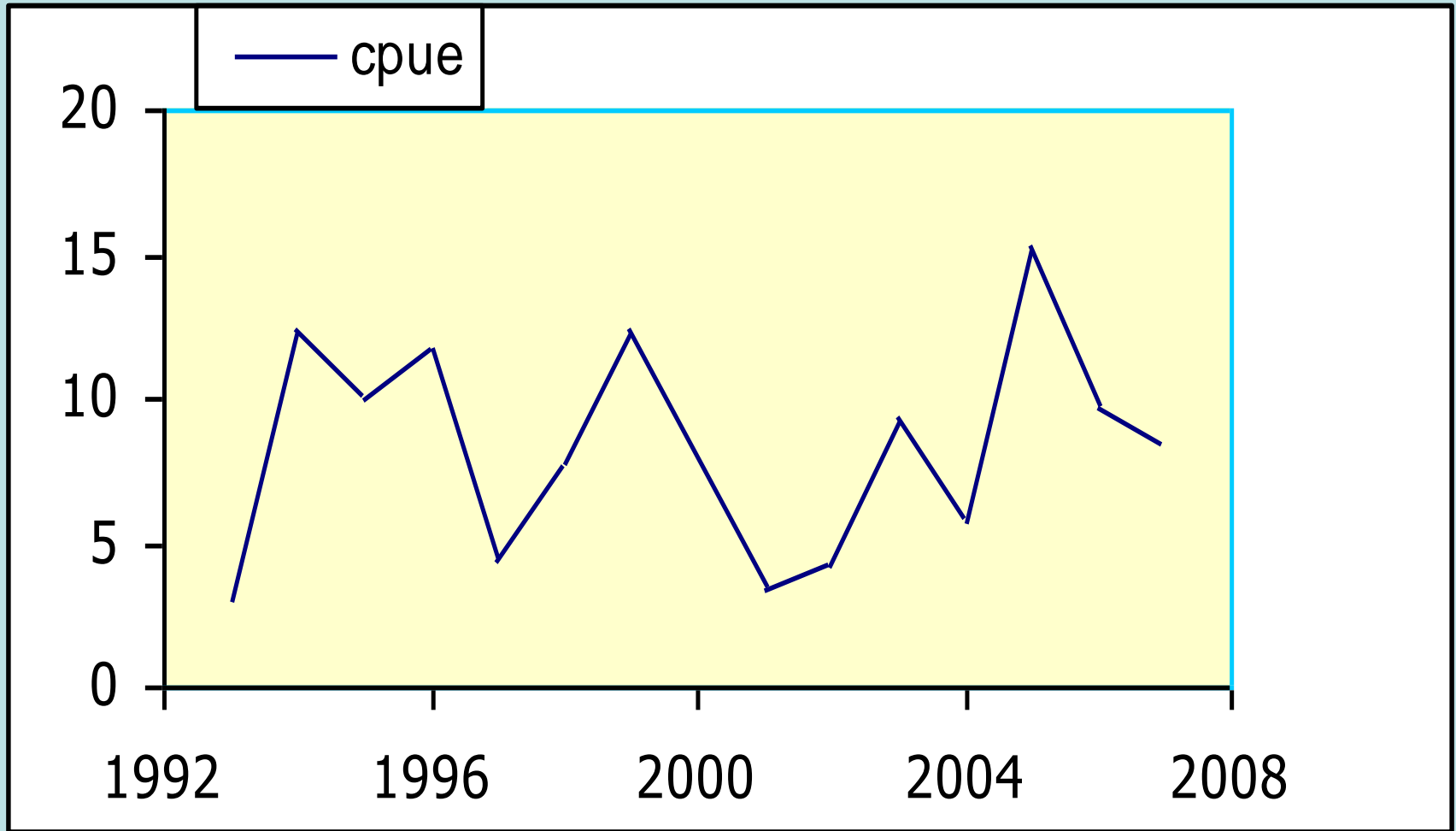


Year	Haul	CpUE(tons/haul)					Total	Total (Tuna)
		<i>SKT</i>	<i>BET</i>	<i>BET</i>	Bycatch			
1993	5	1.584	0.984	0.290	0.132	2.991	2.858	
1994	11	9.506	1.923	0.911	0.000	12.339	12.339	
1995	38	6.781	2.040	0.890	0.319	10.030	9.711	
1996	58	6.803	2.465	1.792	0.583	11.642	11.059	
1997	5	0.738	1.597	1.019	0.088	4.448	3.354	
1998	28	4.782	1.153	1.647	0.533	7.771	7.582	
1999	6	6.221	3.837	2.340	0.000	12.398	12.398	
2001	23	1.324	1.335	0.435	0.223	3.318	3.095	
2002	18	2.342	0.680	0.940	0.277	4.240	3.962	
2003	3	5.560	1.793	1.740	0.152	9.245	9.093	
200								

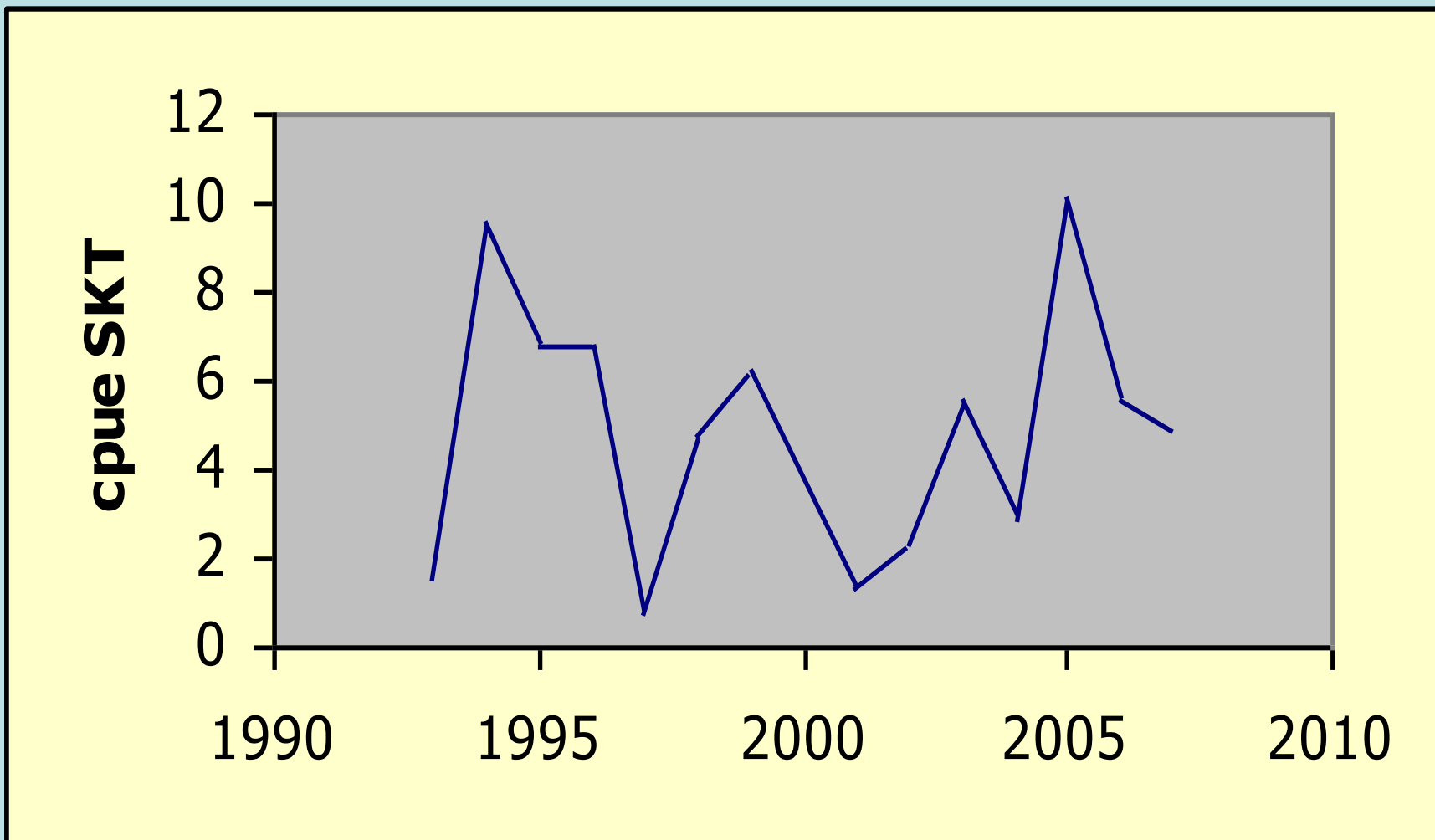
CPUE of tunas and bycatch species (1993 – 2007).



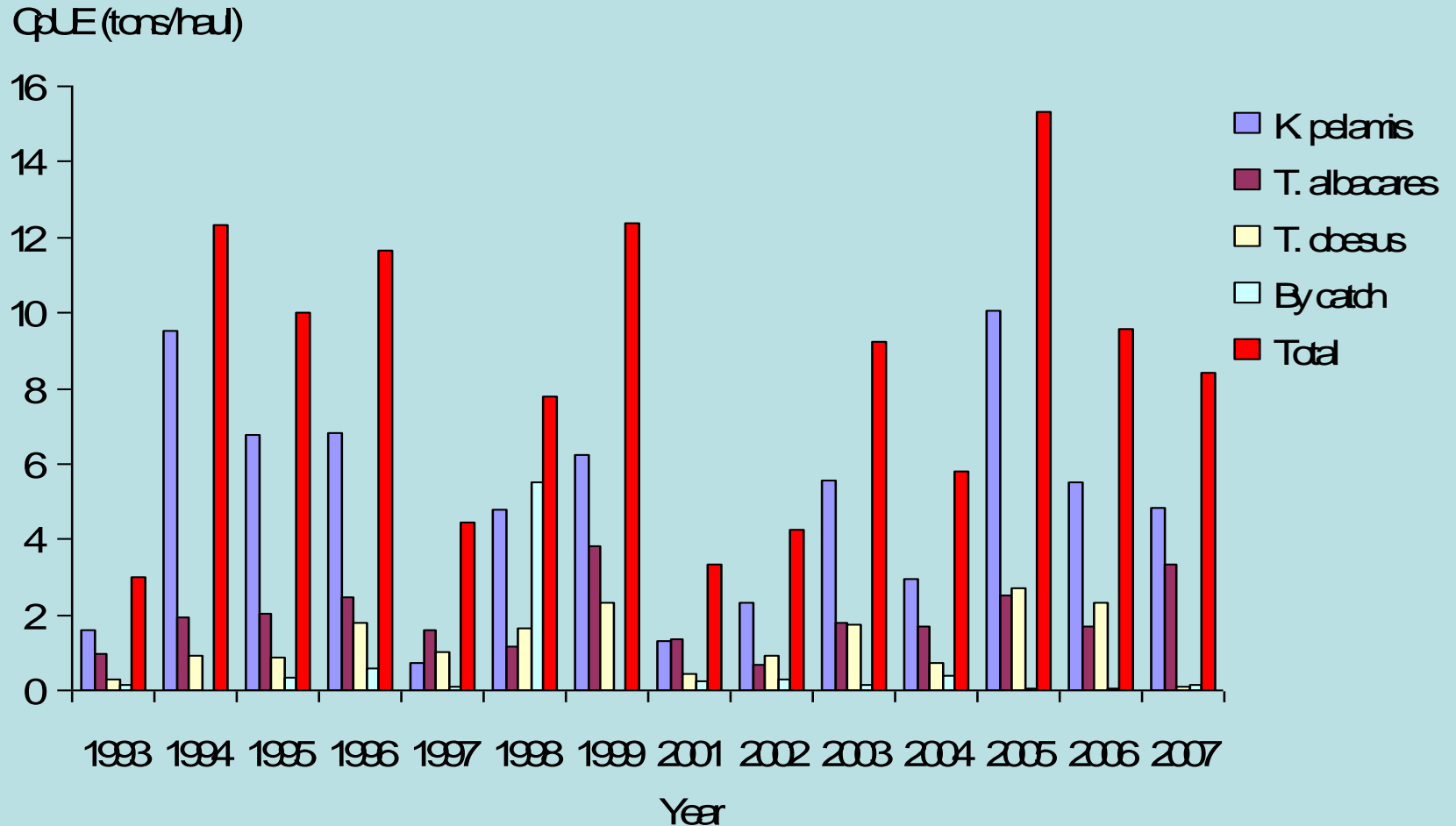
Average CPUE (ton/set) by Year



Average CPUE ton/set During 1993 to 2007



CpUE (tons/haul) of Tunas and Bycatch (1993 – 2007).



R/V Mahidol



THE END /Thank you.

